

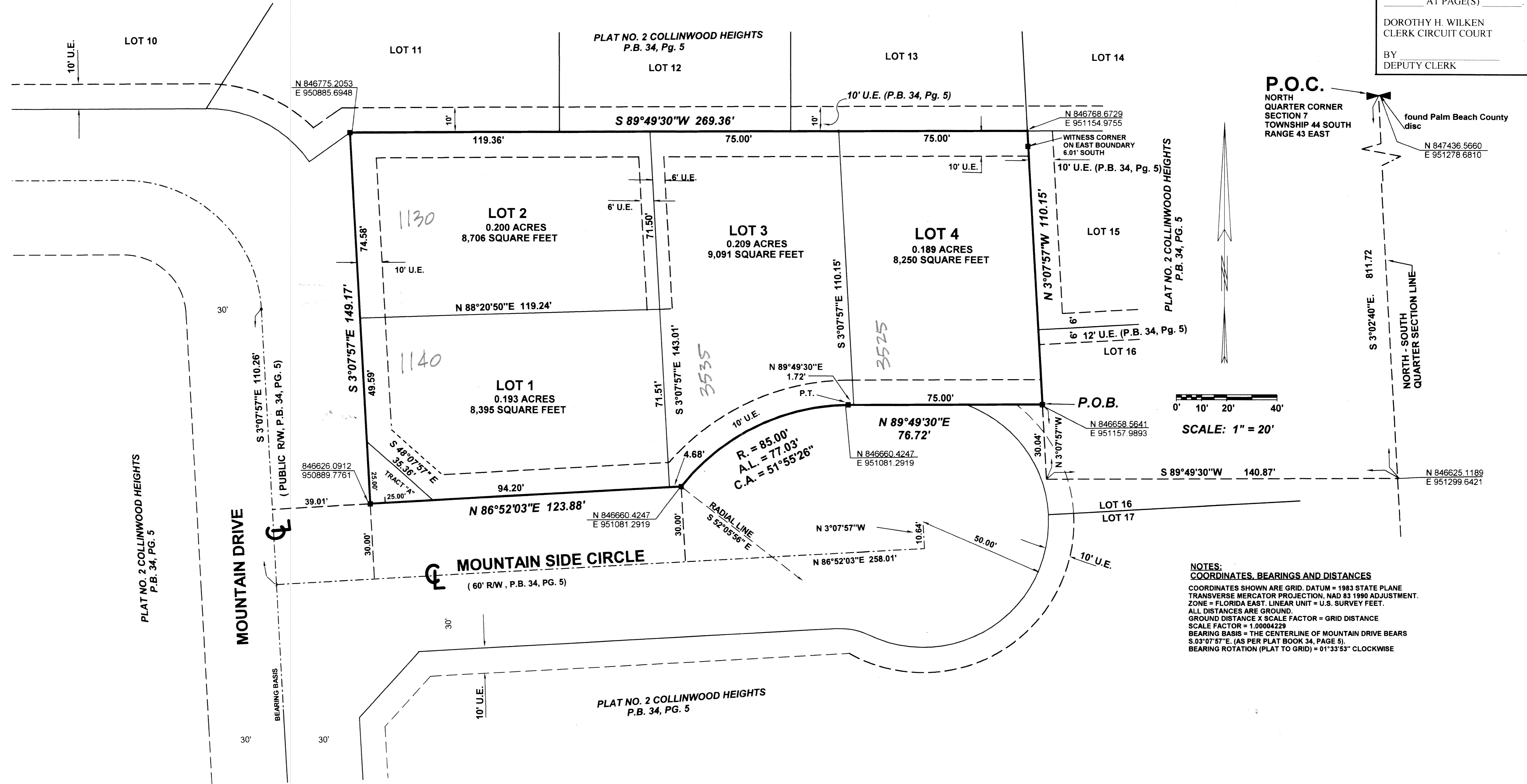
VALDES PLAT

BEING IN SECTION 7, TOWNSHIP 44 SOUTH, RANGE 43 EAST
PALM BEACH COUNTY, FLORIDA
MARCH 2002
SHEET 2 OF 2

STATE OF FLORIDA
COUNTY OF PALM BEACH
THIS PLAT WAS FILED FOR
RECORD AT _____
THIS _____ DAY OF _____
A.D. _____ AND DULY
RECORDED IN PLAT BOOK
_____ AT PAGE(S) _____

DOROTHY H. WILKEN
CLERK CIRCUIT COURT

BY _____
DEPUTY CLERK



SCALE: 1" = 20'

NOTES:
COORDINATES, BEARINGS AND DISTANCES
COORDINATES SHOWN ARE GRID. DATUM = 1983 STATE PLANE
TRANSVERSE MERCATOR PROJECTION, NAD 83 1990 ADJUSTMENT.
ZONE = FLORIDA EAST. LINEAR UNIT = U.S. SURVEY FEET.
ALL DISTANCES ARE GROUND.
GROUND DISTANCE X SCALE FACTOR = GRID DISTANCE
SCALE FACTOR = 1.00004229
BEARING BASIS = THE CENTERLINE OF MOUNTAIN DRIVE BEARS
S 03°07'57"E. (AS PER PLAT BOOK 34, PAGE 5).
BEARING ROTATION (PLAT TO GRID) = 01°33'53" CLOCKWISE

SUBDIVISION VALDES PLAT
BOOK 100
PAGE 13
FLOOD MAP # 165 B
QUAD # 17
ZONING EM
ZIP CODE 33406
SE
TALZ 017
FUD NAME

SCALE 1" = 20'	MILLER LAND SURVEYING 1121 LAKE AVENUE 561-586-2669 LAKE WORTH, FLORIDA 33460	REFERENCES W9700681 ZAK X - 803
DRAWN BY G.S.S.		JOB NO. 99-01915-A
DATE MARCH 2002		DRAWING NO. L- 1242-P2