

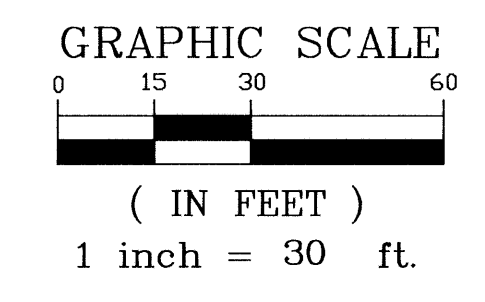
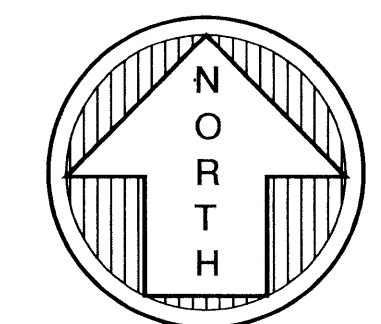
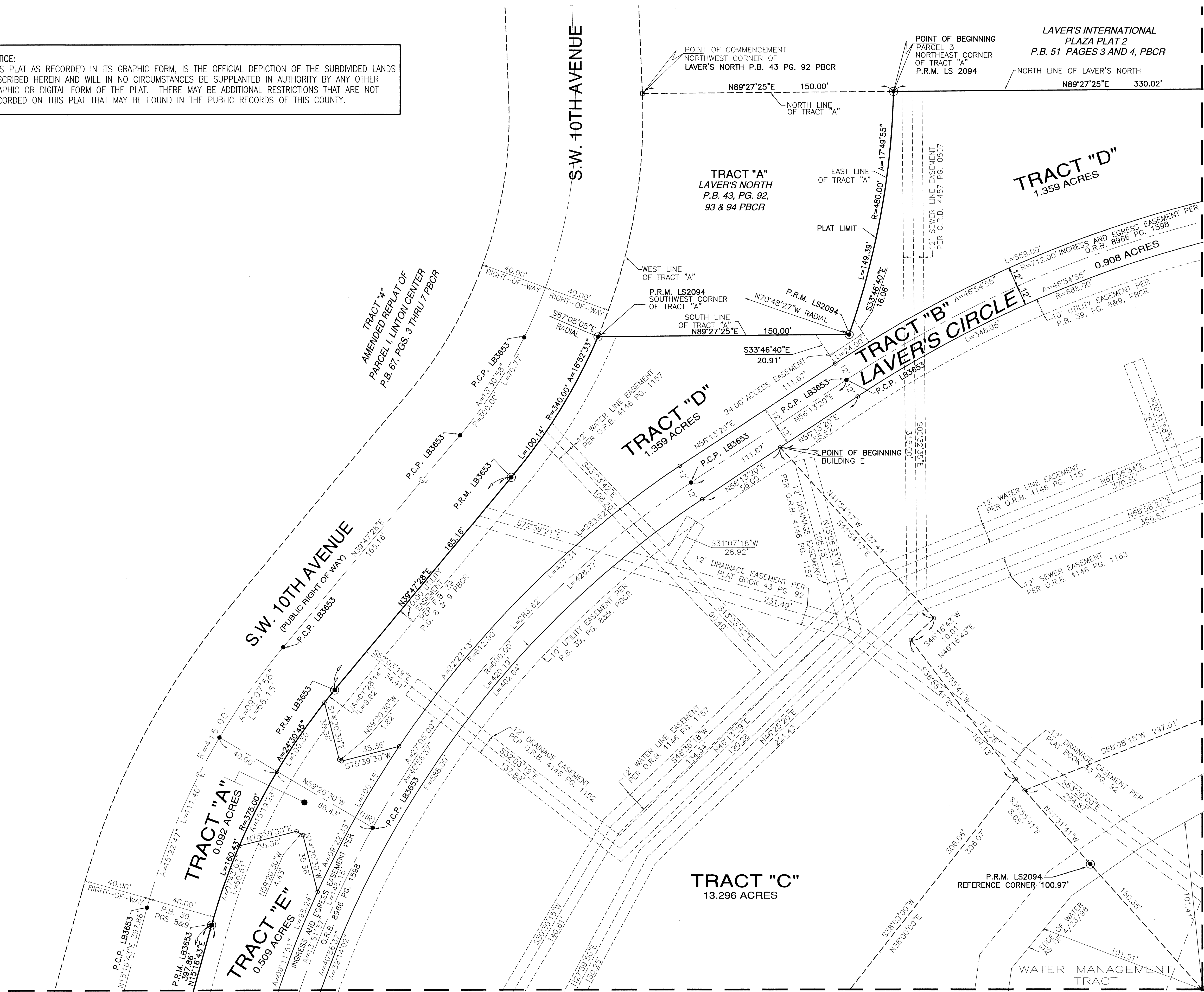
THIS INSTRUMENT WAS PREPARED BY:  
**FORTIN, LEAVY, SKILES, INC.**  
 CONSULTING ENGINEERS & SURVEYORS AND MAPPERS  
 180 N.E. 168th STREET NORTH MIAMI BEACH, FLORIDA.  
 PH.: 305-653-4493 / FAX: 305-651-7152  
 O.N.: (021908) T-PLAT (4002-006)  
 FIELD BOOK (488/52 JWL)

# LAKEVIEW APARTMENTS

A REPLAT OF A PORTION OF OF TRACTS "B", "C" AND "D"  
 LAVER'S NORTH (PB 43, PGS 92, 93 & 94, PBCR)  
 LYING IN SECTION 29, TOWNSHIP 46 SOUTH, RANGE 43 EAST,  
 CITY OF DELRAY BEACH, PALM BEACH COUNTY, FLORIDA  
 DECEMBER 2002

STATE OF FLORIDA SS  
 COUNTY OF PALM BEACH  
 THIS PLAT WAS FILED FOR RECORD  
 AT \_\_\_\_\_ M., THIS DAY  
 OF \_\_\_\_\_, 2003 AND DULY  
 RECORDED IN PLAT BOOK NO. \_\_\_\_\_  
 ON PAGES \_\_\_\_\_ AND \_\_\_\_\_  
 DOROTHY H. WILKEN, CLERK  
 BY: \_\_\_\_\_ DC

**NOTICE:**  
 THIS PLAT AS RECORDED IN ITS GRAPHIC FORM, IS THE OFFICIAL DEPICTION OF THE SUBDIVIDED LANDS DESCRIBED HEREIN AND WILL IN NO CIRCUMSTANCES BE SUPPLANTED IN AUTHORITY BY ANY OTHER GRAPHIC OR DIGITAL FORM OF THE PLAT. THERE MAY BE ADDITIONAL RESTRICTIONS THAT ARE NOT RECORDED ON THIS PLAT THAT MAY BE FOUND IN THE PUBLIC RECORDS OF THIS COUNTY.



- LEGEND:**
- O.R.B. = DENOTES OFFICIAL RECORD
  - (NR) = NON-RADIAL
  - P.B. = DENOTES PLAT BOOK
  - PG. = DENOTES PAGE
  - PBCR = DENOTES PALM BEACH COUNTY RECORDS
  - = DENOTES CENTERLINE
  - = DENOTES PERMANENT REFERENCE MONUMENT (PRM)
  - = DENOTES PERMANENT CONTROL POINTS (PCP)
  - = DENOTES LOT CORNER

MATCH LINE "A" - SEE SHEET TWO OF FOUR

MATCH LINE "B" - SEE SHEET FOUR OF FOUR