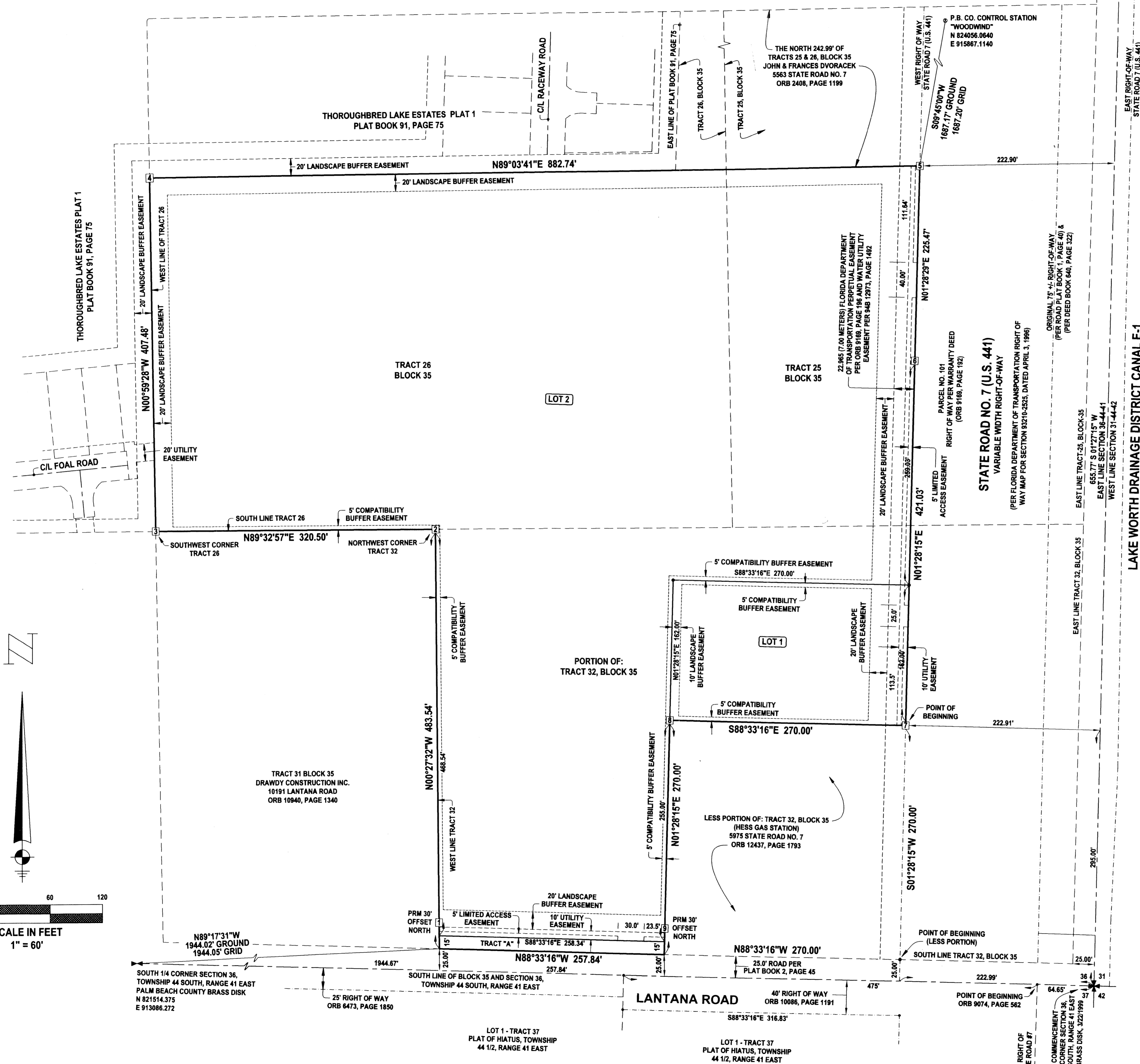


# 441 LAND TRUST PLAT

A REPLAT OF A PORTION OF TRACTS 25, 26 AND 32, BLOCK 35, "PALM BEACH FARMS CO. PLAT NO. 3", PLAT BOOK 2, PAGES 45-54, LYING IN SECTION 36, TOWNSHIP 44 SOUTH, RANGE 41 EAST, PALM BEACH COUNTY, FLORIDA

JUNE, 2003

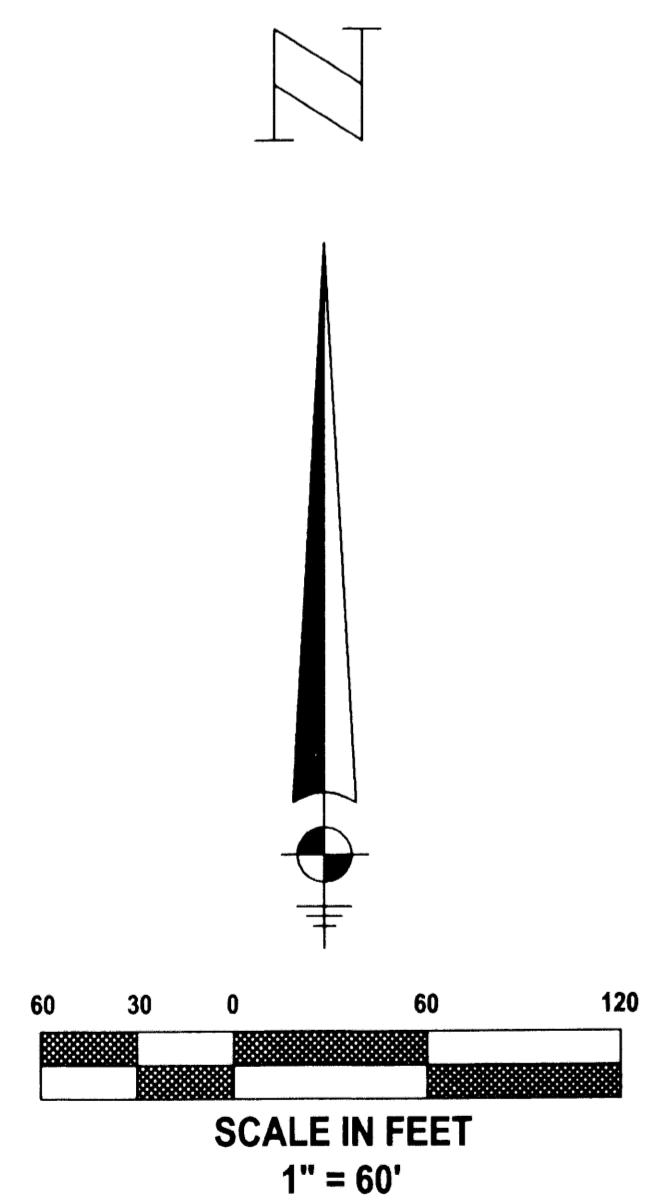
SHEET 2 OF 2



CORNER#	DESCRIPTION	NORTHING	EASTING
1	SET PRM LB 4165	821520.4290	915029.9095
2	SET PRM LB 4165	821973.8767	915026.3046
3	FOUND PRM LB 2936	821971.3549	914705.8159
4	SET PRM LB 2936	822378.7739	914698.7676
5	SET PRM LB 4165	822393.2342	915581.3887
6	SET PRM LB 4165	822167.8391	915575.5861
7	SET PRM LB 4165	821746.9479	915564.7790
8	SET PRM LB 4165	821753.7586	915294.8649
9	SET PRM LB 4165	821513.9140	915288.7051

**STATE PLANE COORDINATE INFORMATION**

- A. Coordinates shown are grid
- B. Datum = NAD 83, 1990 Adjustment
- C. Zone = Florida East
- D. Linear Unit = US Survey Foot
- E. Coordinate system 1983 State Plane Transverse Mercator Projection
- F. All distances are ground.
- G. Scale Factor = 1.0000174
- H. Ground distance X scale factor = grid distance



SUBDIVISION 441 LAND TRUST PLAT  
BOOK 99  
PAGE 125  
FLOOD ZONE 02  
QUAD # 02  
SE  
TAZ  
FUD NAME

THIS INSTRUMENT WAS PREPARED BY DANIEL L. BLANTON IN THE OFFICES OF DONALD D. DANIELS, INC.

<p><b>DONALD D. DANIELS, INC.</b> Consulting Surveyors &amp; Mappers</p>	<p><b>441 LAND TRUST PLAT</b></p>	
	<p>Florida Certificate LB No. 4165 725 North A-1-A, Suite C-111 Jupiter, Florida 33477 Tel: (561) 747-8894</p>	<p>REFERENCE: 36/4441</p> <p>OFFICE: DAO</p> <p>CHECKED:</p>