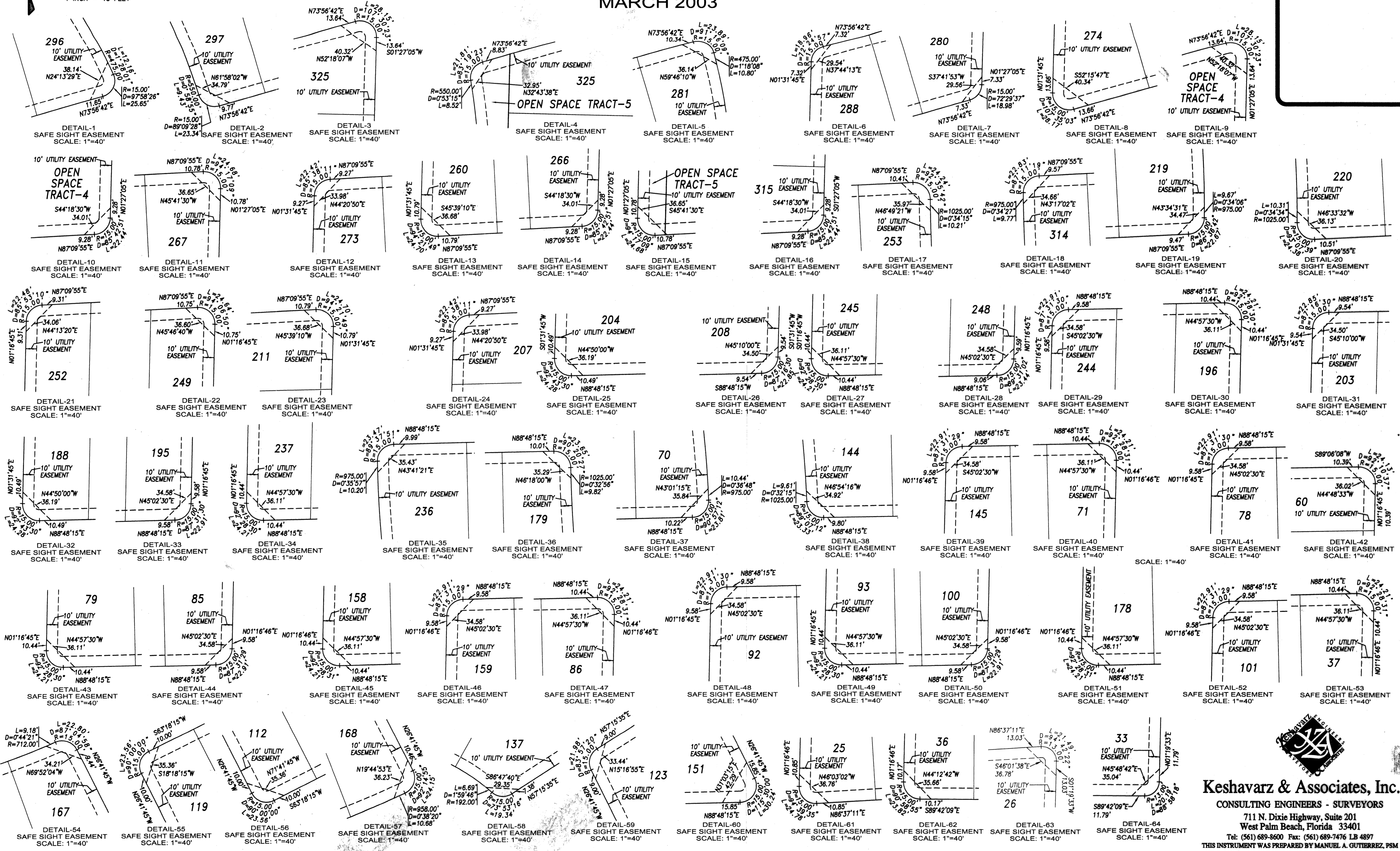
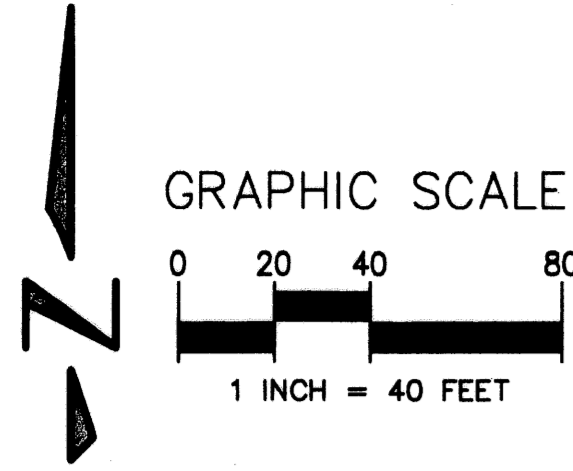


# PINES ON PENNOCK LANE P.U.D. PLAT No.2 (PASEOS)

A PARCEL OF LAND LYING IN THE WEST HALF OF SECTION 12, THE NORTHWEST QUARTER OF SECTION 13, and THE NORTHEAST QUARTER OF SECTION 14, TOWNSHIP 41 SOUTH, RANGE 42 EAST TOWN OF JUPITER, PALM BEACH COUNTY, FLORIDA

SHEET 16 OF 16

MARCH 2003



**Keshavarz & Associates, Inc.**  
CONSULTING ENGINEERS - SURVEYORS  
711 N. Dixie Highway, Suite 201  
West Palm Beach, Florida 33401  
Tel: (561) 689-8600 Fax: (561) 689-7476 LB 4897  
THIS INSTRUMENT WAS PREPARED BY MANUEL A. GUTIERREZ, PSM  
PROFESSIONAL SURVEYOR AND MAPPER NO. 4102  
IN THE OFFICES OF KESHAVARZ & ASSOCIATES, INC.  
\\KAV\SU\687\dwg\687PLAT\_SHT\_16.dwg 03/07/03 11:42:07 AM EST