

PINES ON PENNOCK LANE P.U.D. PLAT No.2 (PASEOS)

A PARCEL OF LAND LYING IN THE WEST HALF OF SECTION 12, THE NORTHWEST QUARTER OF SECTION 13, AND THE NORTHEAST QUARTER OF SECTION 14, TOWNSHIP 41 SOUTH, RANGE 42 EAST TOWN OF JUPITER, PALM BEACH COUNTY, FLORIDA

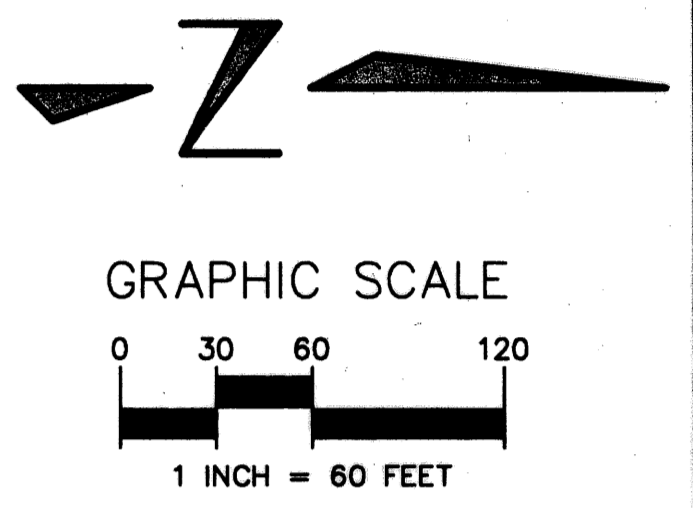
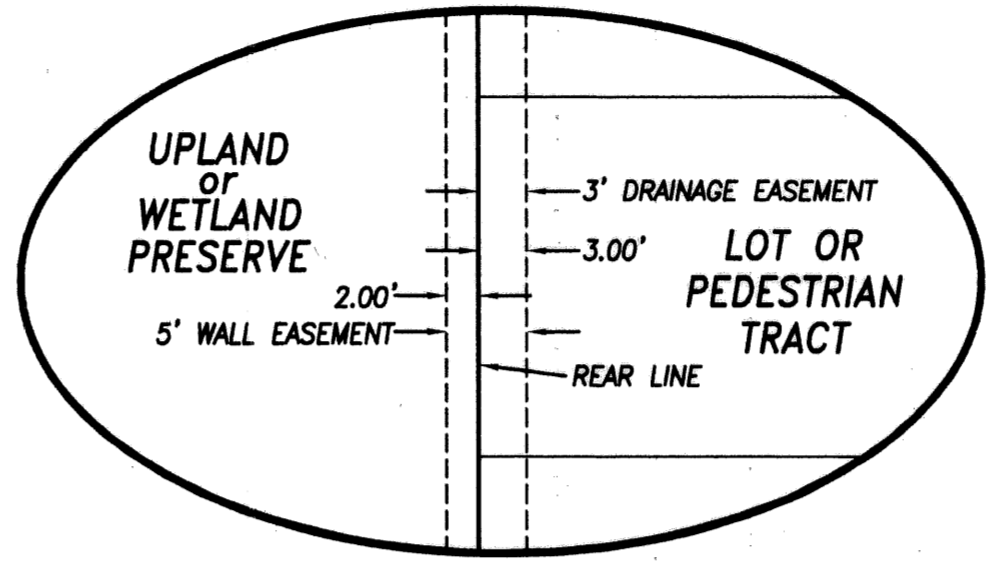
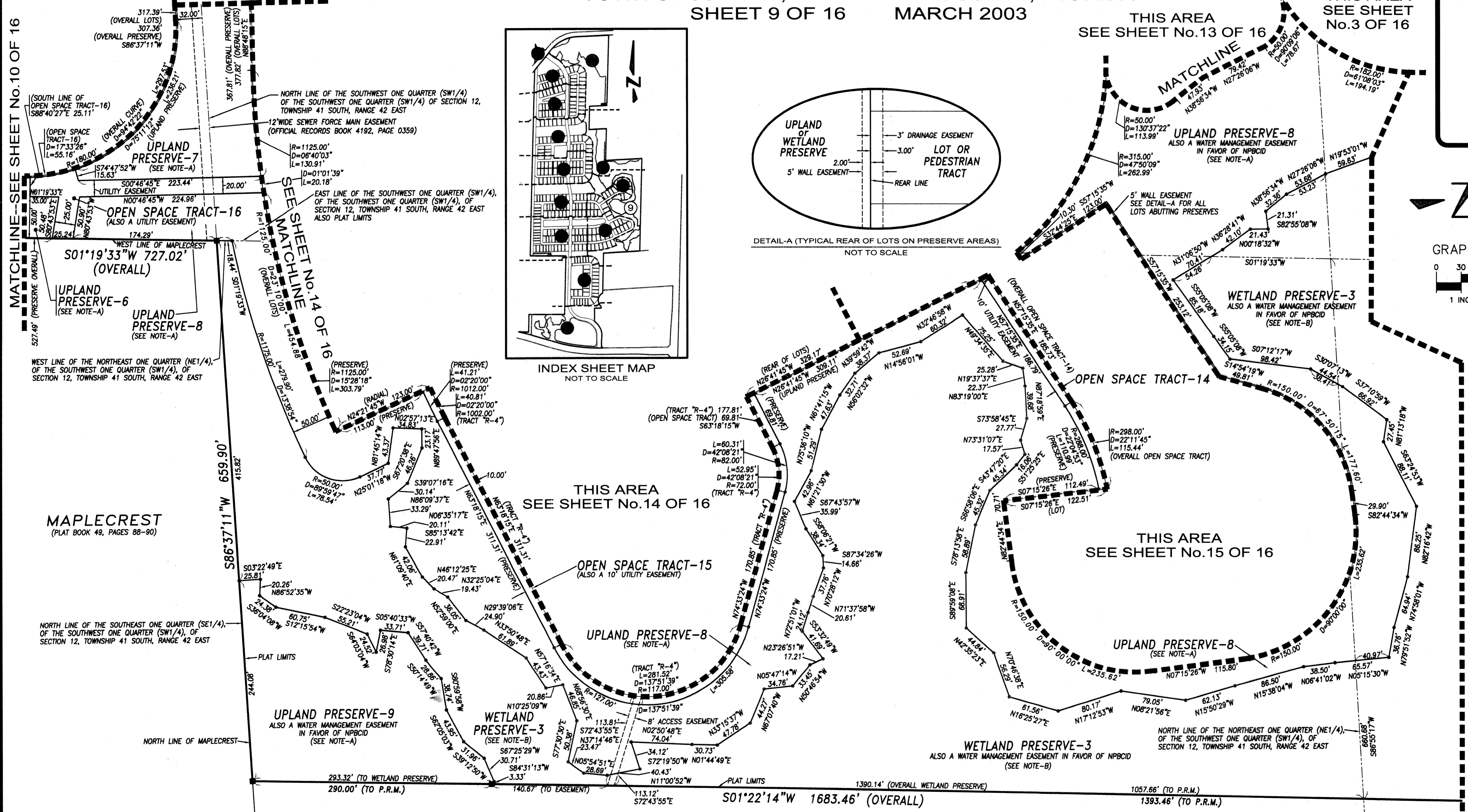
SHEET 9 OF 16 MARCH 2003

MATCHLINE--SEE SHEET No.10 OF 16

SEE SHEET No.12 OF 16 and THE NORTHEAST QUARTER OF SECTION 14, TOWNSHIP 41 SOUTH, RANGE 42 EAST MATCHLINE

THIS AREA SEE SHEET No.13 OF 16

THIS AREA SEE SHEET No.3 OF 16



SYMBOLS LEGEND

■	SET PERMANENT REFERENCE MONUMENT (P.R.M.) "L.B.4897"
●	PERMANENT CONTROL POINT (P.C.P.)
NPBCID	NORTHERN PALM BEACH COUNTY IMPROVEMENT DISTRICT
R	RADIUS
D	CENTRAL ANGLE
L	ARC LENGTH
ECA	EXCLUSIVE COMMON AREA
C	CENTERLINE
P.O.B.	POINT OF BEGINNING
P.O.C.	POINT OF COMMENCING
—	CHANGE IN DIRECTION
P.S.M.	PROFESSIONAL SURVEYOR AND MAPPER
P.C.	POINT OF CURVATURE
○	CHANGE OF DIRECTION OF PRESERVE BOUNDARY

*NOTE: ALL LOT LINES ARE RADIAL UNLESS OTHERWISE SPECIFIED.

*NOTE-A: ALSO A PUBLIC ACCESS EASEMENT; ALSO A WATER MANAGEMENT EASEMENT IN FAVOR OF NPBCID; ALSO PART OF A CONSERVATION EASEMENT IN FAVOR OF NORTHERN PALM BEACH COUNTY IMPROVEMENT DISTRICT AS RECORDED IN OFFICIAL RECORDS BOOK 13229, PAGE 1384; ALSO A GOPHER TORTOISE NATURAL HABITAT PRESERVE EASEMENT

*NOTE-B: ALSO A WATER MANAGEMENT EASEMENT IN FAVOR OF NPBCID; ALSO PART OF A CONSERVATION EASEMENT IN FAVOR OF NORTHERN PALM BEACH COUNTY IMPROVEMENT DISTRICT AS RECORDED IN OFFICIAL RECORDS BOOK 13229, PAGE 1384;



Keshavarz & Associates, Inc.
CONSULTING ENGINEERS - SURVEYORS
711 N. Dixie Highway, Suite 201
West Palm Beach, Florida 33401
Tel: (561) 689-8600 Fax: (561) 689-7476 LB 4897
THIS INSTRUMENT WAS PREPARED BY MANUEL A. GUTIERREZ, PSM
PROFESSIONAL SURVEYOR AND MAPPER NO. 4102
IN THE OFFICES OF KESHAVARZ & ASSOCIATES, INC.
\\KAFS\SU\687\dwg\687PLAT_SHT_09.dwg 03/06/03 09:26:06 AM EST