

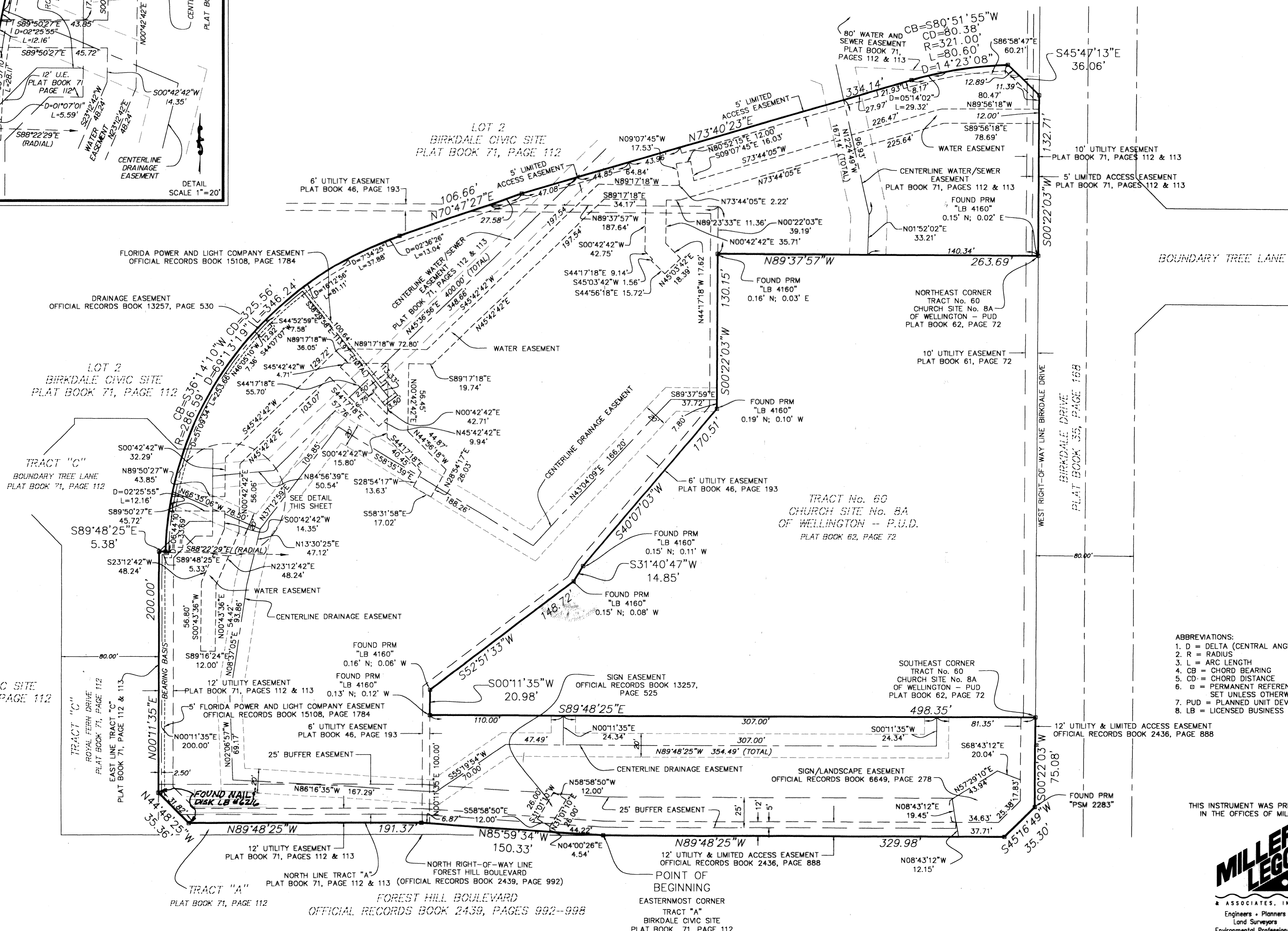
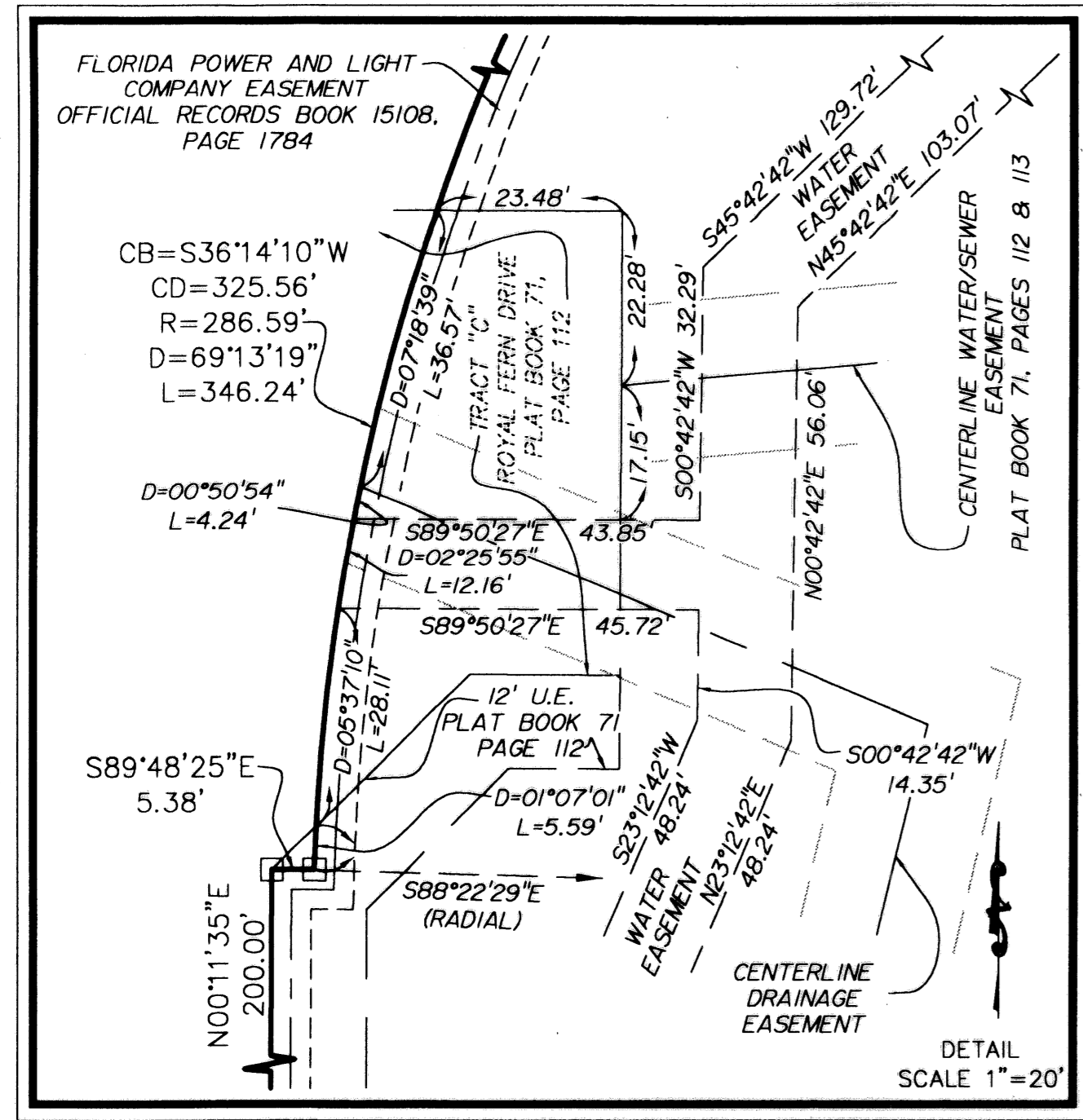
CAMBRIDGE SCHOOL AT WELLINGTON

BEING A REPLAT OF A PORTION OF LOT 2 AND TRACT "C", AS SHOWN ON BIRKDALE CIVIC SITE AS RECORDED IN PLAT BOOK 71, PAGES 112 AND 113 OF THE PUBLIC RECORDS OF PALM BEACH COUNTY, FLORIDA. LYING IN SECTION 11, TOWNSHIP 44 SOUTH, RANGE 41 EAST, PALM BEACH COUNTY, FLORIDA.
 JULY 2003
 SHEET 2 OF 2

41

STATE OF FLORIDA
 COUNTY OF PALM BEACH
 This plat was filed for record at _____ this _____, 2003,
 day of _____, and duly recorded in Plat Book _____ Pages _____ Through _____

DOROTHY H. WILKEN
 Clerk of Circuit Court
 By: _____



THIS INSTRUMENT WAS PREPARED BY ADAM P. ZWIG, CST III, IN THE OFFICES OF MILLER LEGG AND ASSOCIATES, INC.

MILLER LEGG
 & ASSOCIATES, INC.
 Engineers • Planners
 Land Surveyors
 Environmental Professionals
 (561) 798-9981
 Fax: (561) 795-9408
 LICENSED BUSINESS NUMBER 6680

1300 Corporate Center Way
 Suite 201
 Wellington
 Florida 33414-8593

V:\Projects\2003\03-00135 Cambridge at Wellington\Survey\0300135 PLAT.dwg Mod: 06/04/2003 2:08P By: emcandrea