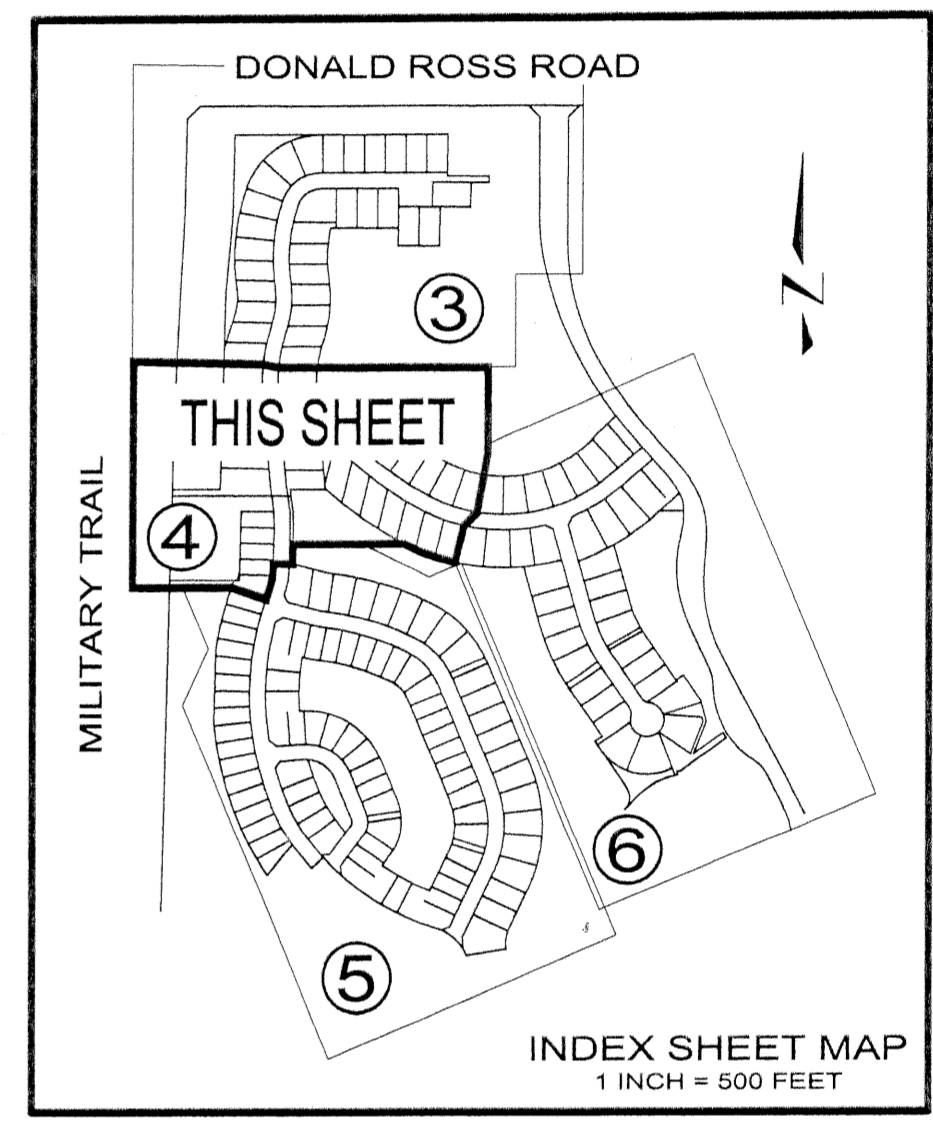
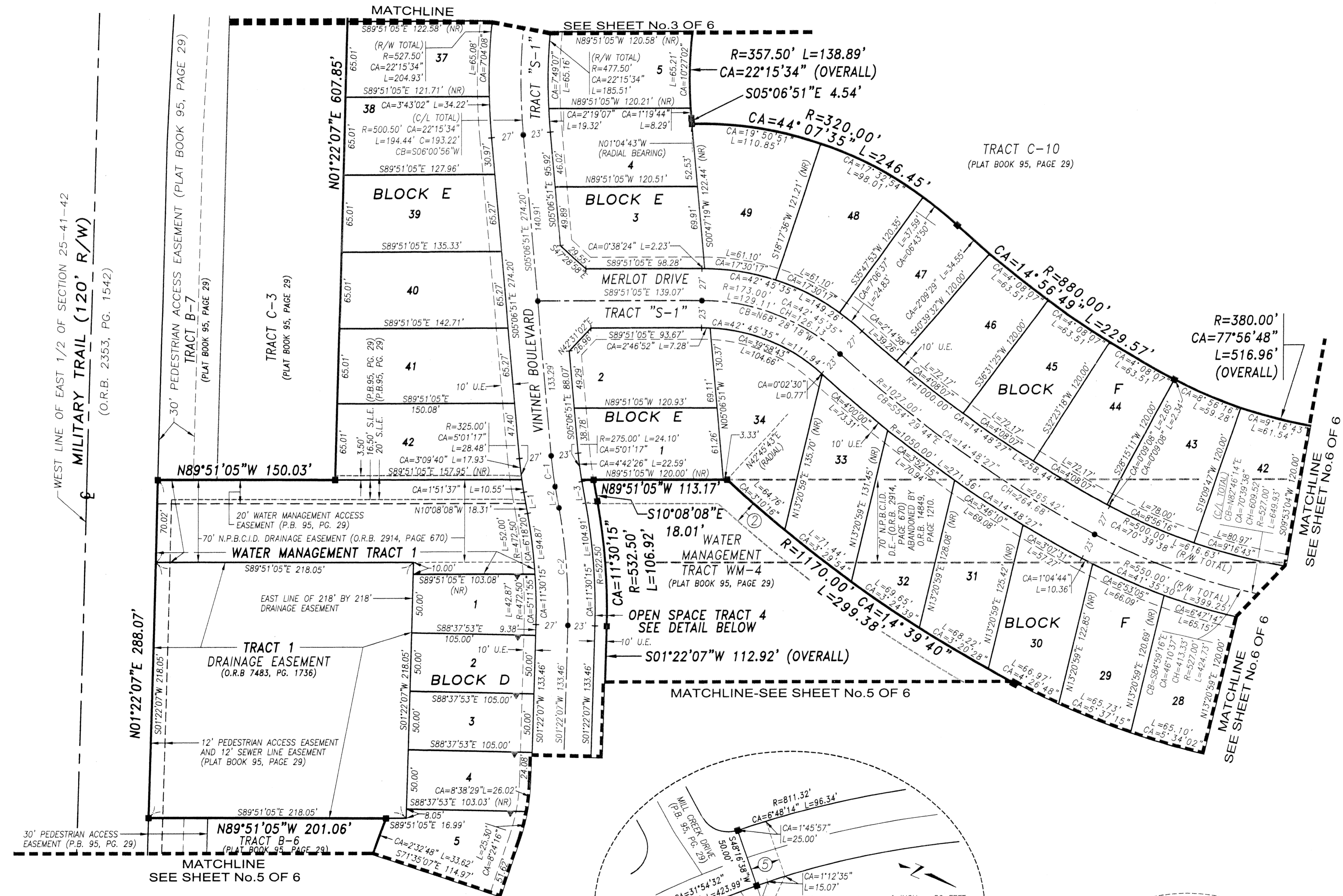
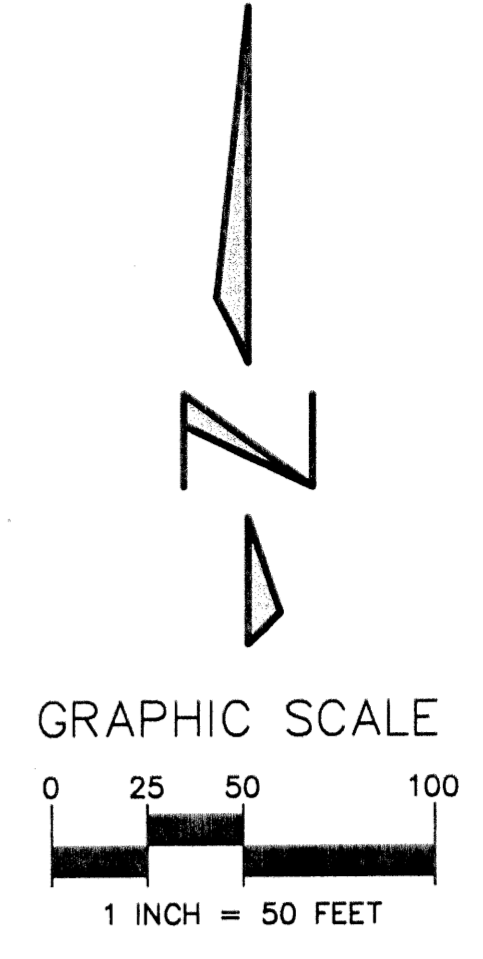


EVERGRENE P.C.D. PLAT SIX

A REPLAT OF TRACT F-8 AND WATER MANAGEMENT TRACT WM-5, EVERGRENE PLAT TWO AS RECORDED IN PLAT BOOK 95, PAGES 29 THROUGH 54 INCLUSIVE, PUBLIC RECORDS OF PALM BEACH COUNTY, FLORIDA LYING IN THE EAST ONE-HALF OF SECTION 25, TOWNSHIP 41 SOUTH, RANGE 42 EAST, CITY OF PALM BEACH GARDENS, PALM BEACH COUNTY, FLORIDA
SHEET No. 4 OF 6 MARCH 2003



SYMBOLS LEGEND

- SET PERMANENT REFERENCE MONUMENT (P.R.M.) "L.B. 4897"
- PERMANENT CONTROL POINT (P.C.P.)
- NORTHERN PALM BEACH COUNTY IMPROVEMENT DISTRICT
- R RADIUS
- L CENTRAL ANGLE
- CH CHORD BEARING
- CH CHORD DISTANCE
- U.E. UTILITY EASEMENT
- P.S.M. PROFESSIONAL SURVEYOR AND MAPPER
- PERMANENT REFERENCE MONUMENT (P.R.M.) "L.B. 2936"
- CHANGE OF DIRECTION PER EVERGRENE P.C.D. PLAT TWO
- CHANGE OF DIRECTION PER THIS PLAT
- (NR) NON RADIAL LINE
- (TYP) TYPICAL
- ① 10' UTILITY EASEMENT (EVERGRENE P.C.D. PLAT TWO)
- ② 20' SEWER LINE EASEMENT (EVERGRENE P.C.D. PLAT TWO)
- ③ 5' UTILITY EASEMENT (EVERGRENE P.C.D. PLAT TWO)
- ④ 5' SEWER LINE EASEMENT (EVERGRENE P.C.D. PLAT TWO)
- ⑤ ROADWAY, DRAINAGE, WATER, SEWER AND UTILITY EASEMENT (EVERGRENE P.C.D. PLAT TWO)
- ⑥ 20' DRAINAGE EASEMENT (EVERGRENE P.C.D. PLAT TWO)
- ⑦ 20' DRAINAGE EASEMENT AND 20' WATER MAINTENANCE ACCESS EASEMENT (EVERGRENE P.C.D. PLAT TWO)
- ▲ DENOTES A 6"11" BUILDING SETBACK IS REQUIRED FROM THIS LOT LINE

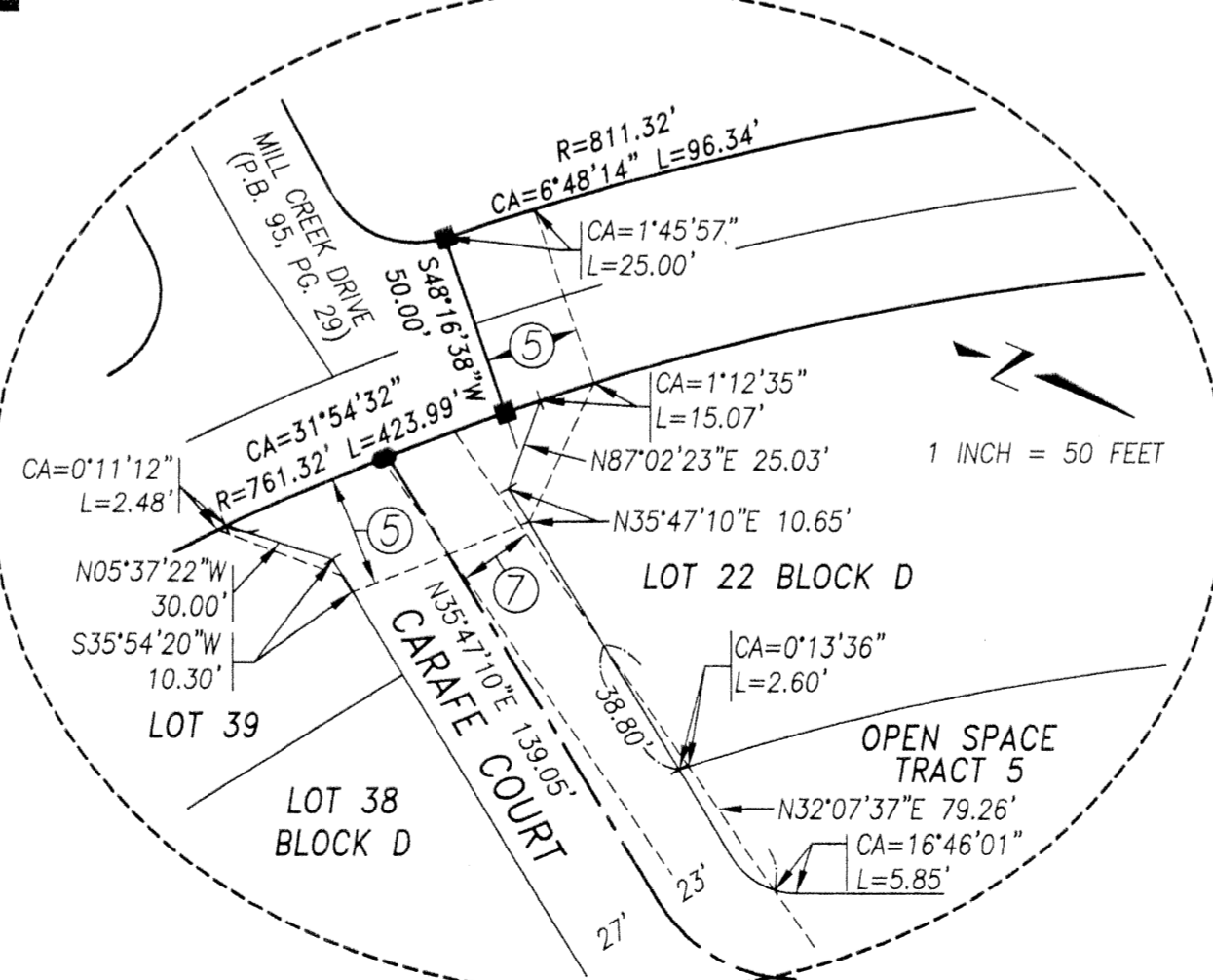
*NOTE: ALL LOT LINES ARE RADIAL UNLESS OTHERWISE SPECIFIED.

CURVE TABLE

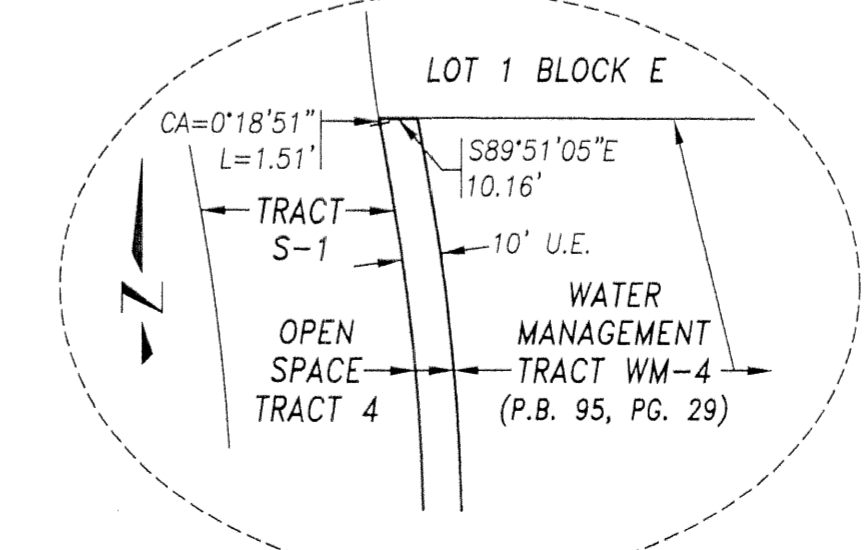
	RADIUS	CENTRAL ANGLE	ARC LENGTH	CHORD	CHORD BEARING
C-1	R=298.00'	CA=5°01'17"	L=26.12'	CH=26.11'	CB=507°37'29"E
C-2	R=499.50'	CA=11°30'15"	L=100.29'	CH=100.12'	CB=504°23'00"E

LINE TABLE

L-1	S10°08'08"E 18.31'
L-2	S10°08'08"E 18.31'
L-2	S10°08'08"E 18.31'



DETAIL - SEE SHEET 5 OF 6
EXISTING EASEMENTS - EVERGRENE PLAT TWO
SEE NOTE ON SHEET 6 OF 6



DETAIL - THE NORTH END OF OPEN SPACE TRACT 4
1 INCH = 50 FEET

Keshavarz & Associates, Inc.
CONSULTING ENGINEERS - SURVEYORS
711 N. Dixie Highway, Suite 201
West Palm Beach, Florida 33401
Tel: (561) 689-8600 Fax: (561) 689-7476 LB 4897
THIS INSTRUMENT WAS PREPARED BY MANUEL A. GUTIERREZ, PSM
PROFESSIONAL SURVEYOR AND MAPPER NO. 4102
IN THE OFFICES OF KESHAVARZ & ASSOCIATES, INC.