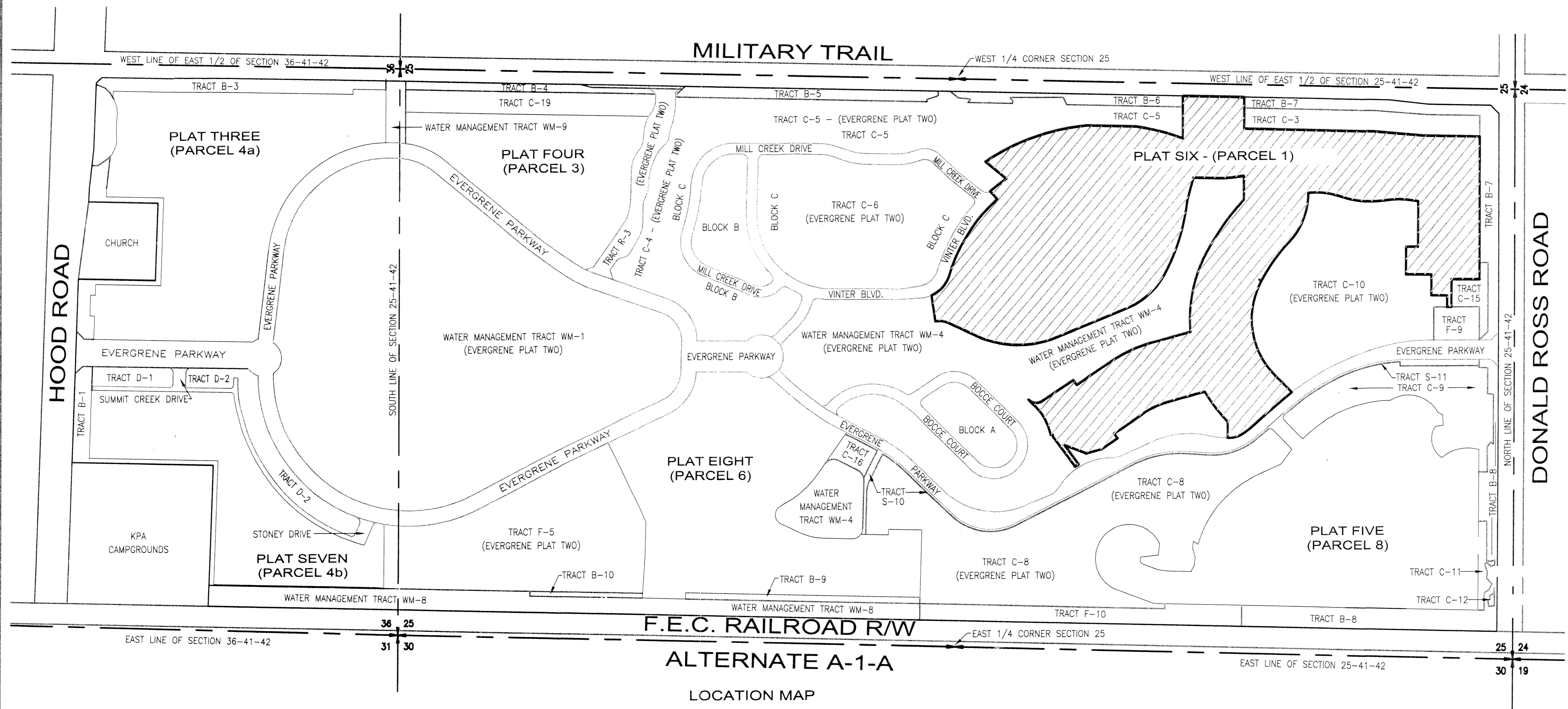
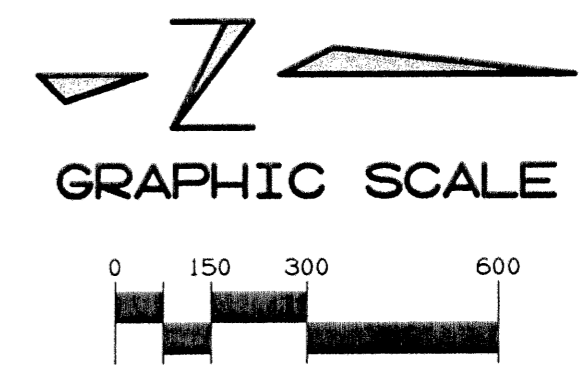


# EVERGRENE P.C.D. PLAT SIX

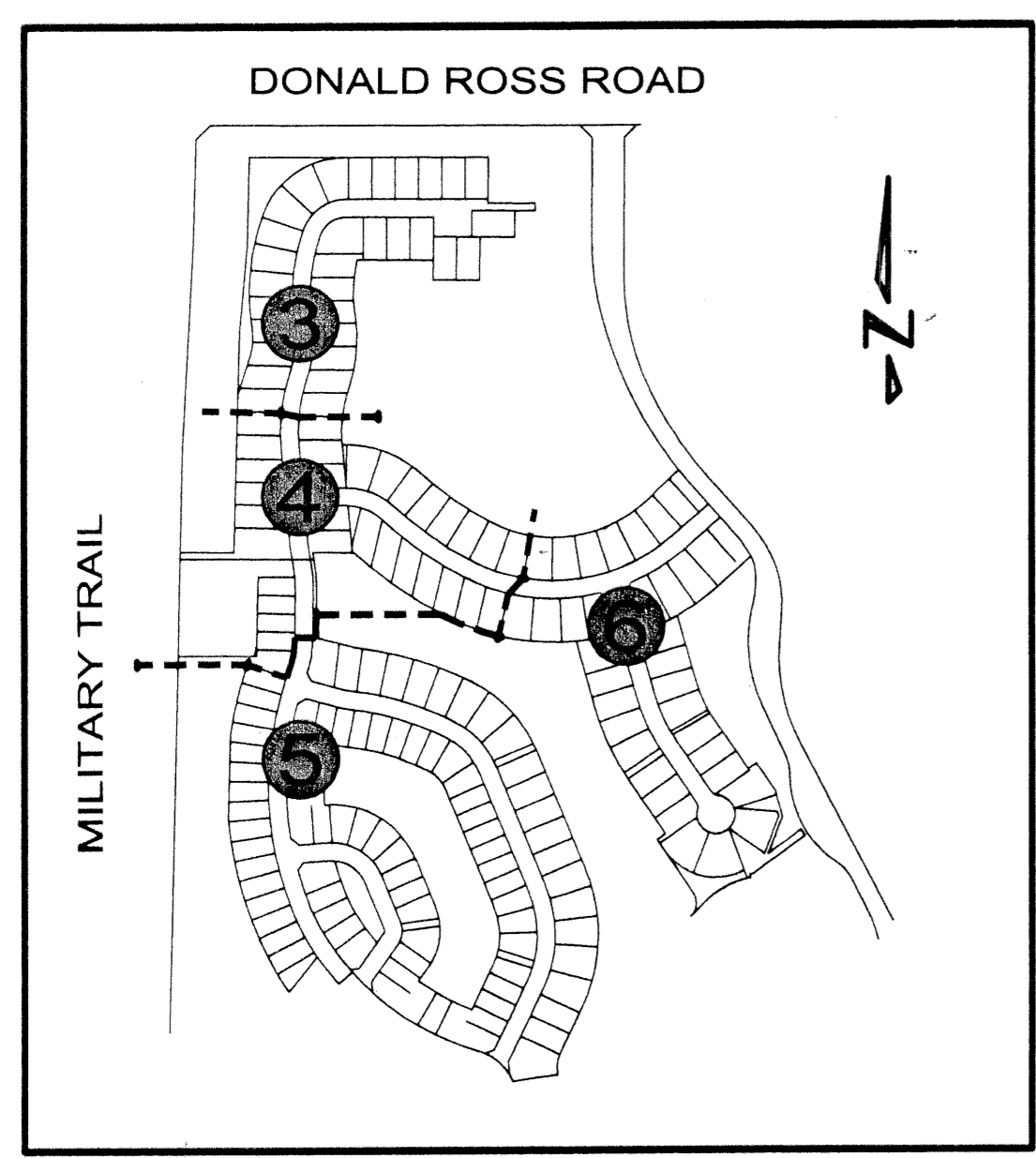
A REPLAT OF TRACT F-8 AND WATER MANAGEMENT TRACT WM-5, EVERGRENE PLAT TWO AS RECORDED IN PLAT BOOK 95, PAGES 29 THROUGH 54 INCLUSIVE, PUBLIC RECORDS OF PALM BEACH COUNTY, FLORIDA LYING IN THE EAST ONE-HALF OF SECTION 25, TOWNSHIP 41 SOUTH, RANGE 42 EAST, CITY OF PALM BEACH GARDENS, PALM BEACH COUNTY, FLORIDA  
SHEET No. 2 OF 6 MARCH 2003



AREA TABULATION		
TRACT NAME	SQUARE FEET	ACRES
TRACT 1	47,534.03	1.0912
LOTS 01-21, BLOCK D	126,184.37	2.8968
LOTS 22-26, BLOCK D	31,386.96	0.7205
LOTS 27-39, BLOCK D	79,679.28	1.8292
LOTS 40-42, BLOCK D	16,758.63	0.3847
LOTS 43-66, BLOCK D	137,848.62	3.1600
LOTS 67-88, BLOCK D	192,889.79	4.4281
LOTS 89-91, BLOCK D	19,659.43	0.4513
LOTS 01-02, BLOCK E	15,514.58	0.3562
LOTS 03-19, BLOCK E	142,323.41	3.2673
LOTS 20-42, BLOCK E	196,132.60	4.5026
LOTS 01-12, BLOCK F	111,930.11	2.5696
LOT 13, BLOCK F	10,393.67	0.2386
LOTS 14-34, BLOCK F	189,349.40	4.3469
LOTS 35-49, BLOCK F	130,356.88	2.9926
OPEN SPACE TRACT-1	2,630.10	0.0604
OPEN SPACE TRACT-2	1,256.64	0.0288
OPEN SPACE TRACT-3	354.81	0.0081
OPEN SPACE TRACT-4	2,377.48	0.0546
OPEN SPACE TRACT-5	11,832.02	0.2716
OPEN SPACE TRACT-6	1,050.03	0.0241
OPEN SPACE TRACT-7	1,052.17	0.0242
OPEN SPACE TRACT-8	7,943.21	0.1824
OPEN SPACE TRACT-9	1,256.64	0.0288
OPEN SPACE TRACT-10	6,466.38	0.1484
OPEN SPACE TRACT-11	2,752.40	0.0632
ROAD TRACT S-1	345,356.38	7.9283
UPLAND PRESERVE TRACT 1	21,797.75	0.5004
UPLAND PRESERVE TRACT 2	12,771.61	0.2932
UPLAND PRESERVE TRACT 3	2,310.02	0.0530
WATER MANAGEMENT TRACT 1	23,043.12	0.5290
WATER MANAGEMENT TRACT 2	137,385.45	3.1539
<b>TOTALS:</b>	<b>2,029,377.96</b>	<b>46.5881</b>

F.E.C. RAILROAD R/W  
ALTERNATE A-1-A  
LOCATION MAP

AREA TABULATION			
TRACT NAME	SQUARE FEET	ACRES	LAND USE CLASSIFICATION
TRACT 1	47,534.04	1.0912	NON-DESIGNATED
LOTS 01-91, BLOCK D	604,207.08	13.8707	SFC
LOTS 01-42, BLOCK E	353,970.59	8.1260	SFC
LOTS 01-49, BLOCK F	442,030.06	10.1476	SFC
OPEN SPACE TRACTS 1-11	38,971.87	0.8947	EX
ROAD TRACT S-1	345,356.38	7.9283	EX
UPLAND PRESERVE TRACTS 1-3	36,879.38	0.8466	EX
WATER MANAGEMENT TRACTS 1-2	160,428.57	3.6829	EX
<b>TOTALS:</b>	<b>2,029,377.96</b>	<b>46.5881</b>	



INDEX SHEET MAP  
1 INCH = 500 FEET

**SURVEYOR'S CERTIFICATION**

THIS IS TO CERTIFY THAT THE PLAT SHOWN HEREON WAS PREPARED UNDER MY DIRECTION AND SUPERVISION AND IS A TRUE AND CORRECT REPRESENTATION OF A SURVEY MADE UNDER MY RESPONSIBLE DIRECTION AND SUPERVISION; THAT SAID SURVEY IS ACCURATE TO THE BEST OF MY KNOWLEDGE AND BELIEF; THAT PERMANENT REFERENCE MONUMENTS (P.R.M.s), HAVE BEEN PLACED AS REQUIRED BY LAW, AND THAT PERMANENT CONTROL POINTS (P.C.P.s), AND MONUMENTS ACCORDING TO CHAPTER 177.081 (9), F.S., WILL BE SET UNDER THE GUARANTEES POSTED WITH THE CITY OF PALM BEACH GARDENS FOR THE REQUIRED IMPROVEMENTS; AND, FURTHER, THAT THE PLAT COMPLIES WITH ALL THE REQUIREMENTS OF CHAPTER 177, FLORIDA STATUTES, AS AMENDED, AND THE ORDINANCES OF THE CITY OF PALM BEACH GARDENS, FLORIDA.

THIS 11<sup>th</sup> DAY OF March, 2003.

MANUEL A. GUTIERREZ  
PROFESSIONAL SURVEYOR & MAPPER  
FLORIDA CERTIFICATE NO. LS 4102

**REVIEWING SURVEYOR**

THIS PLAT HAS BEEN REVIEWED FOR CONFORMITY IN ACCORDANCE WITH CHAPTER 177.081 OF THE FLORIDA STATUTES AND THE ORDINANCES OF THE CITY OF PALM BEACH GARDENS. THIS REVIEW DOES NOT INCLUDE THE VERIFICATION OF THE GEOMETRIC DATA OR THE FIELD VERIFICATION OF THE PERMANENT CONTROL POINTS (P.C.P.s) AND MONUMENTS AT LOT CORNERS.

THIS 17<sup>th</sup> DAY OF APRIL, 2003.

O. Howard Dukes  
PROFESSIONAL SURVEYOR & MAPPER  
FLORIDA CERTIFICATE NO. LS 4533

UNIT OF DEVELOPMENT 2B  
NORTHERN PALM BEACH COUNTY IMPROVEMENT  
DISTRICT LAND USE CLASSIFICATION

	CODE
MULTI-FAMILY RESIDENTIAL	MFR
SINGLE FAMILY ESTATE	SFE
SINGLE FAMILY CLASSICS	SFC
EXEMPT ACREAGE	EX



**Keshavarz & Associates, Inc.**  
CONSULTING ENGINEERS - SURVEYORS  
711 N. Dixie Highway, Suite 201  
West Palm Beach, Florida 33401  
Tel: (561) 689-8600 Fax: (561) 689-7476 LB 4897  
THIS INSTRUMENT WAS PREPARED BY MANUEL A. GUTIERREZ, PSM  
PROFESSIONAL SURVEYOR AND MAPPER NO. 4102  
IN THE OFFICES OF KESHAVARZ & ASSOCIATES, INC.