

# VILLAGES OF WINDSOR PLAT FOUR

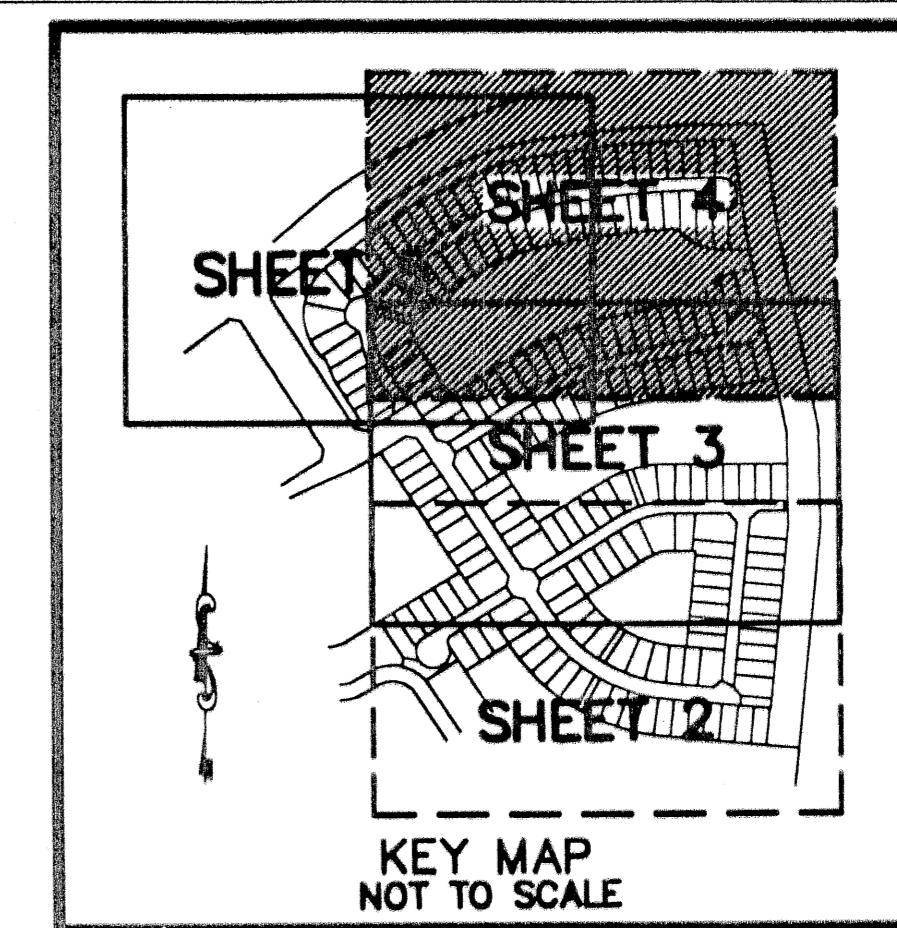
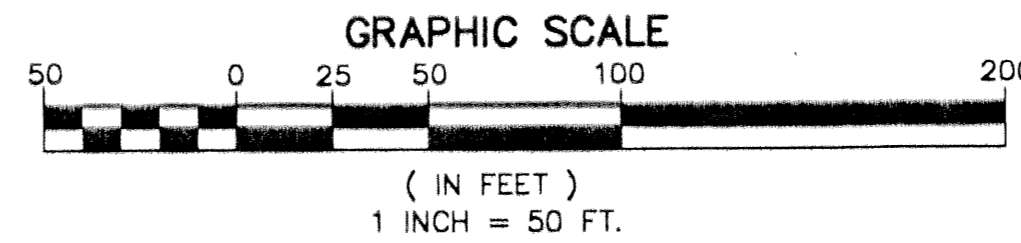
BEING A REPLAT OF A PORTION OF BLOCK 42, "PALM BEACH FARMS COMPANY PLAT NO. 3, AS RECORDED IN PLAT BOOK 2, PAGES 45 THROUGH 54, OF THE PUBLIC RECORDS OF PALM BEACH COUNTY, FLORIDA, LYING IN SECTION 8, TOWNSHIP 45 SOUTH, RANGE 42 EAST, PALM BEACH COUNTY, FLORIDA

THIS INSTRUMENT PREPARED BY  
DAVID P. LINDLEY  
OF  
**CAULFIELD and WHEELER, INC.**  
SURVEYORS - ENGINEERS - PLANNERS  
7301-A WEST PALMETTO PARK ROAD, SUITE 100A  
BOCA RATON, FLORIDA 33433 - (561)392-1991  
AUGUST - 2002

**NOTES**  
COORDINATES, BEARINGS AND DISTANCES

COORDINATES SHOWN ARE GRID  
DATUM = NAD 83 1990 ADJUSTMENT  
ZONE = FLORIDA EAST  
LINEAR UNIT = US SURVEY FEET  
COORDINATE SYSTEM 1983 STATE PLANE  
TRANSVERSE MERCATOR PROJECTION  
ALL DISTANCES ARE GROUND  
SCALE FACTOR = 1.0000195  
GROUND DISTANCE X SCALE FACTOR = GRID DISTANCE  
BEARINGS AS SHOWN HEREON ARE GRID DATUM, NAD 83 1990  
ADJUSTMENT, FLORIDA EAST ZONE.  
COORDINATES SHOWN ON THE CONTROL P.R.M.S MEET OR  
EXCEED THE LOCAL ACCURACY REQUIREMENTS OF A 2  
CENTIMETER GEODETIC CONTROL SURVEY.

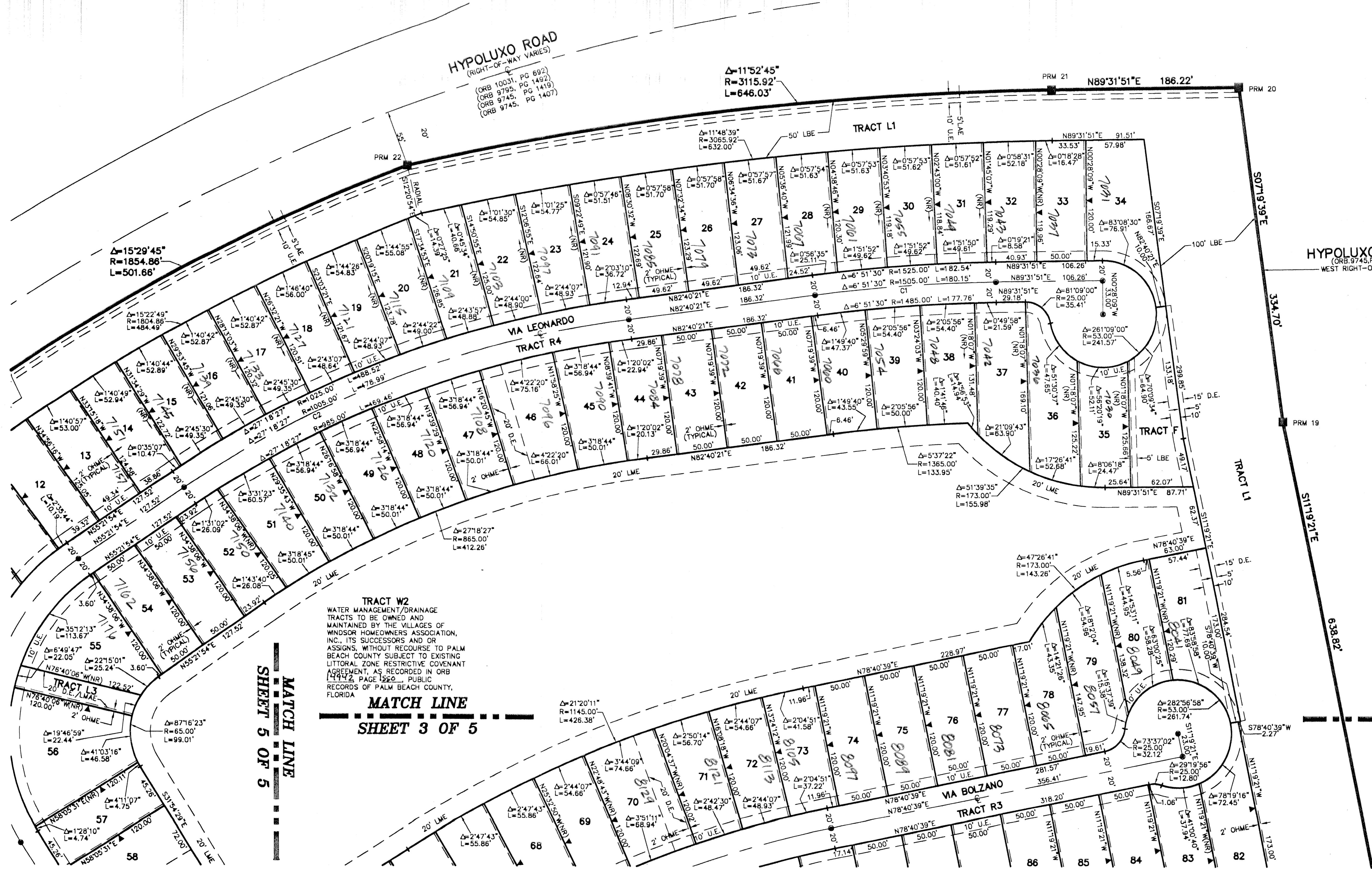
S05°36'26"W (PLAT BEARING) 00°24'17" = BEARING ROTATION  
S05°12'09"W (GRID BEARING) (PLAT TO GRID)  
EAST LINE THIS PLAT COUNTERCLOCKWISE



STATE OF FLORIDA  
COUNTY OF PALM BEACH  
THIS PLAT WAS FILED FOR  
RECORD AT \_\_\_\_\_ M.  
THIS \_\_\_\_\_ DAY OF \_\_\_\_\_  
A.D. 2003 AND DULY RECORDED  
IN PLAT BOOK \_\_\_\_\_ ON  
PAGES \_\_\_\_\_ AND \_\_\_\_\_  
DOROTHY H. MILKEN  
CLERK CIRCUIT COURT

BY: \_\_\_\_\_  
DEPUTY CLERK

**SHEET 4 OF 5**



**TRACT W2**  
WATER MANAGEMENT/ DRAINAGE  
TRACTS TO BE OWNED AND  
MAINTAINED BY THE VILLAGES OF  
WINDSOR HOMEOWNERS ASSOCIATION,  
INC., ITS SUCCESSORS AND OR  
ASSIGNS, WITHOUT RECOURSE TO PALM  
BEACH COUNTY SUBJECT TO EXISTING  
LITTORAL ZONE RESTRICTIVE COVENANT  
AGREEMENT, AS RECORDED IN ORB  
14442, PAGE 1550, PUBLIC  
RECORDS OF PALM BEACH COUNTY,  
FLORIDA

**MATCH LINE**  
SHEET 3 OF 5

**MATCH LINE**  
SHEET 3 OF 5

SECTION 8, TOWNSHIP 45 SOUTH, RANGE 42 EAST, PALM BEACH COUNTY, FLORIDA  
BOOK 98  
PAGE 165  
FLOOD MAP # 185A  
ZONING MURD  
QUAD # 49  
SE  
TAZ 743  
PUD NAME VILLAGES OF WINDSOR