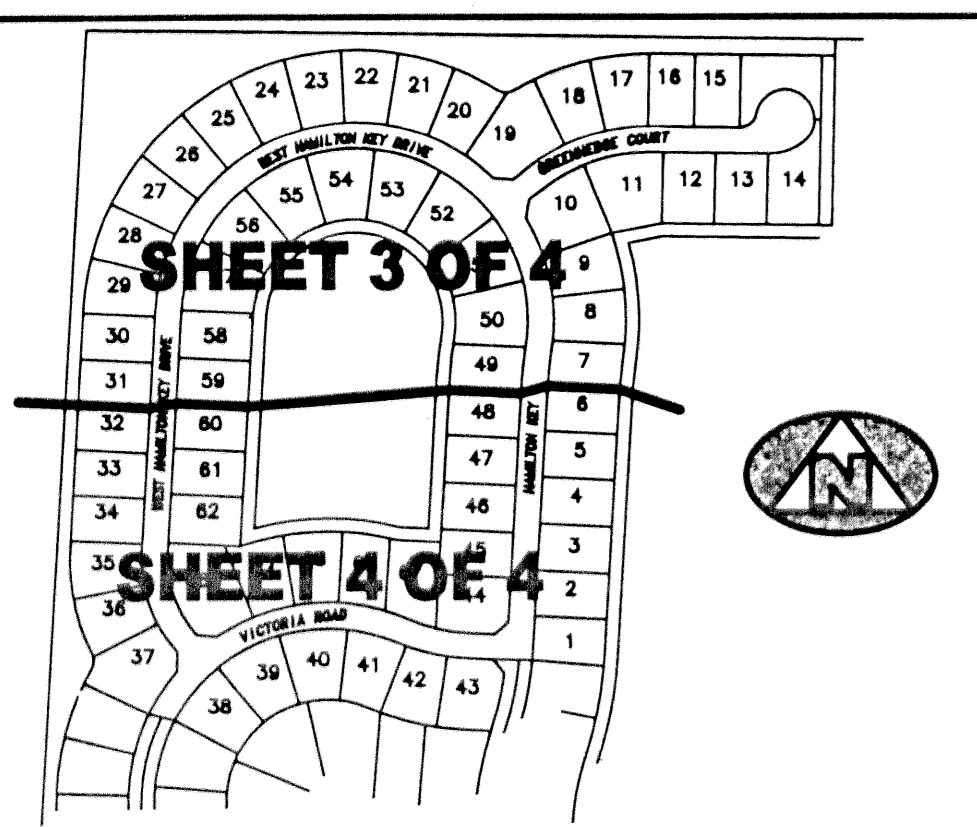


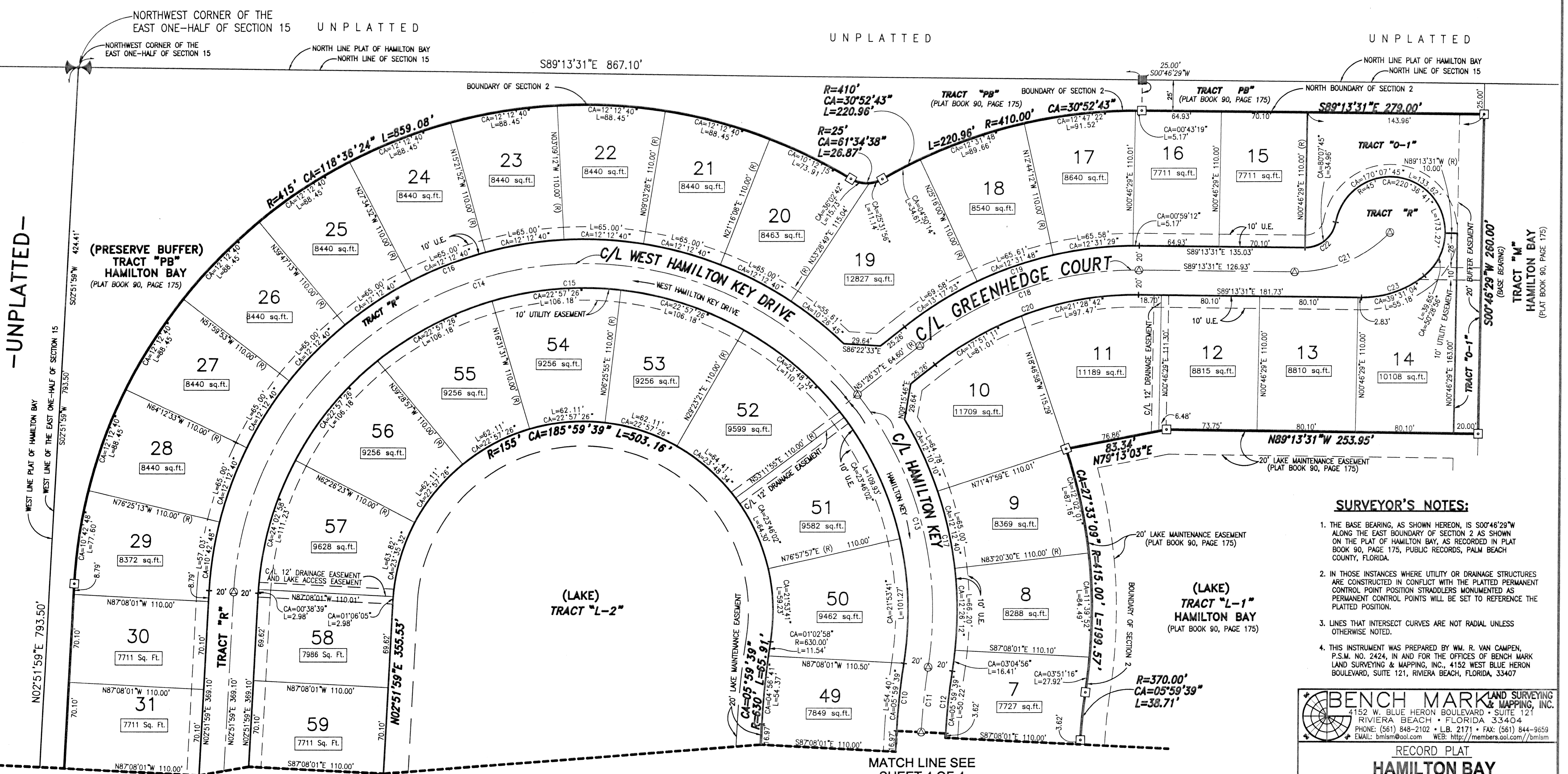
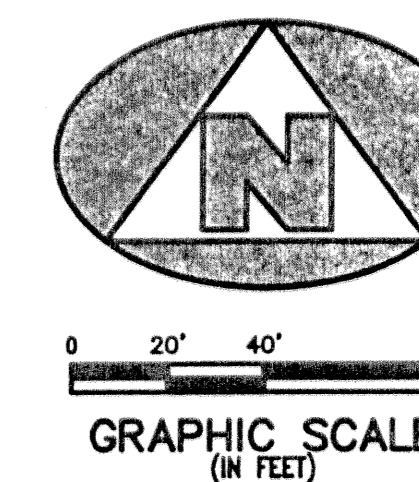
(A PART OF HAMILTON BAY/ THE RENAISSANCE RESIDENTIAL PLANNED DEVELOPMENT) BEING A REPLAT OF SECTION 2, HAMILTON BAY, RECORDED IN PLAT BOOK 90, PAGE 175, PUBLIC RECORDS, PALM BEACH COUNTY, FLORIDA AND LYING IN SECTION 15, TOWNSHIP 43 SOUTH, RANGE 42 EAST, CITY OF WEST PALM BEACH, PALM BEACH COUNTY, FLORIDA



SHEET INDEX

CURVE TABLE with columns for Curve ID, Radius (R), Central Angle (CA), Length (L), Chord Distance (CHD), Long Chord Bearing (LCB), and Chord Distance (CHD).

- LEGEND: DENOTES A RADIAL LINE, DENOTES A CENTERLINE, DENOTES UTILITY EASEMENT, DENOTES RADIUS DISTANCE, DENOTES ARC LENGTH DISTANCE, DENOTES CENTRAL ANGLE, DENOTES LONG CHORD BEARING, DENOTES CHORD DISTANCE, DENOTES OFFICIAL RECORDS BOOK, DENOTES PLAT BOOK NUMBER, DENOTES PAGE NUMBER, DENOTES PERMANENT CONTROL POINT, DENOTES PERMANENT REFERENCE MONUMENT (NO. 2424), DENOTES A FOUND PERMANENT REFERENCE MONUMENT (NO. 2424), DENOTES A SET PERMANENT CONTROL POINT (NO. 2424), DENOTES A FOUND PERMANENT CONTROL POINT (NO. 2424).



UNPLATTED

UNPLATTED

MATCH LINE SEE SHEET 4 OF 4

MATCH LINE SEE SHEET 4 OF 4

- SURVEYOR'S NOTES: 1. THE BASE BEARING, AS SHOWN HEREON, IS S00°46'29"W ALONG THE EAST BOUNDARY OF SECTION 2 AS SHOWN ON THE PLAT OF HAMILTON BAY, AS RECORDED IN PLAT BOOK 90, PAGE 175, PUBLIC RECORDS, PALM BEACH COUNTY, FLORIDA. 2. IN THOSE INSTANCES WHERE UTILITY OR DRAINAGE STRUCTURES ARE CONSTRUCTED IN CONFLICT WITH THE PLATTED PERMANENT CONTROL POINT POSITION STRADDLERS MONUMENTED AS PERMANENT CONTROL POINTS WILL BE SET TO REFERENCE THE PLATTED POSITION. 3. LINES THAT INTERSECT CURVES ARE NOT RADIAL UNLESS OTHERWISE NOTED. 4. THIS INSTRUMENT WAS PREPARED BY WM. R. VAN CAMPEN, P.S.M. NO. 2424, IN AND FOR THE OFFICES OF BENCH MARK LAND SURVEYING & MAPPING, INC., 4152 WEST BLUE HERON BOULEVARD, SUITE 121, RIVIERA BEACH, FLORIDA, 33407

BENCH MARK LAND SURVEYING & MAPPING, INC. 4152 W. BLUE HERON BOULEVARD, SUITE 121, RIVIERA BEACH, FLORIDA 33404. PHONE: (561) 848-2102 • LB: 2171 • FAX: (561) 844-9659. EMAIL: bmlsm@aol.com WEB: http://members.aol.com/bmlsm

Table with columns: DWN, ALLEN, FB, DATE, P220, CKD, WVC, FILE, P220SEC2-PLAT, SCALE, 1"=40', SHEET 3 OF 4