

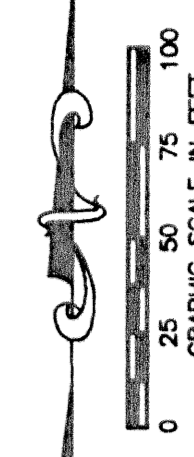
MIRASOL CLUBHOUSE AND VILLAS

PART OF GOLF DIGEST P.C.D.
BEING IN SECTION 04, TOWNSHIP 42 SOUTH, RANGE 42 EAST,
CITY OF PALM BEACH GARDENS,
PALM BEACH COUNTY, FLORIDA
SHEET 3 OF 4

STATE OF FLORIDA
COUNTY OF PALM BEACH

THIS PLAT WAS FILED FOR
RECORD
THIS _____ DAY OF _____
AD, 2003 AND DULY RECORDED
IN PLAT BOOK _____ ON PAGES
_____ THROUGH _____
DOROTHY H. WILKEN, CLERK
BY: _____, D.C.

CIRCUIT COURT SEAL



① 20' WLE ORB 13316, PG 888

LINE	BEARING	DISTANCE	LINE	BEARING	DISTANCE
L1	N01°21'14"E	239.31'	L9	N43°27'07"W	157.31'
L2	N23°36'33"E	65.52'	L10	S85°55'10"W	109.66'
L3	N42°28'07"E	361.29'	L11	S63°25'10"W	106.70'
L4	N38°52'59"E	40.00'	L12	N81°16'46"W	69.10'
L5	N16°52'59"E	42.01'	L13	N89°26'16"W	55.61'
L6	N05°07'01"W	107.26'	L14	S89°38'14"W	43.68'
L7	N88°27'07"W	211.83'	L15	S88°27'07"E	37.27'
L8	N01°32'53"E	226.31'	L16	S02°01'10"W	59.71'

CURVE	RADIUS	CENTRAL ANGLE	ARC LENGTH
C1	348.00'	05°20'01"	32.40'
C2	1376.37'	16°09'39"	388.22'

③ 20' SUA SLE ORB 13316, PG 882

LINE	BEARING	DISTANCE	LINE	BEARING	DISTANCE
L40	N01°46'56"W	54.35'	L45	N03°33'49"W	124.21'
L41	N01°14'25"E	306.55'	L46	N67°18'53"W	158.32'
L42	N75°08'18"E	197.13'	L47	S47°31'53"E	74.67'
L43	N43°31'11"E	245.42'	L48	N88°27'07"W	187.85'
L44	N01°40'52"E	251.49'	L49	S88°19'08"E	74.83'

④ 10' FPL EASEMENT ORB 13096, PG 257
10' UE ORB 13096, PG 263

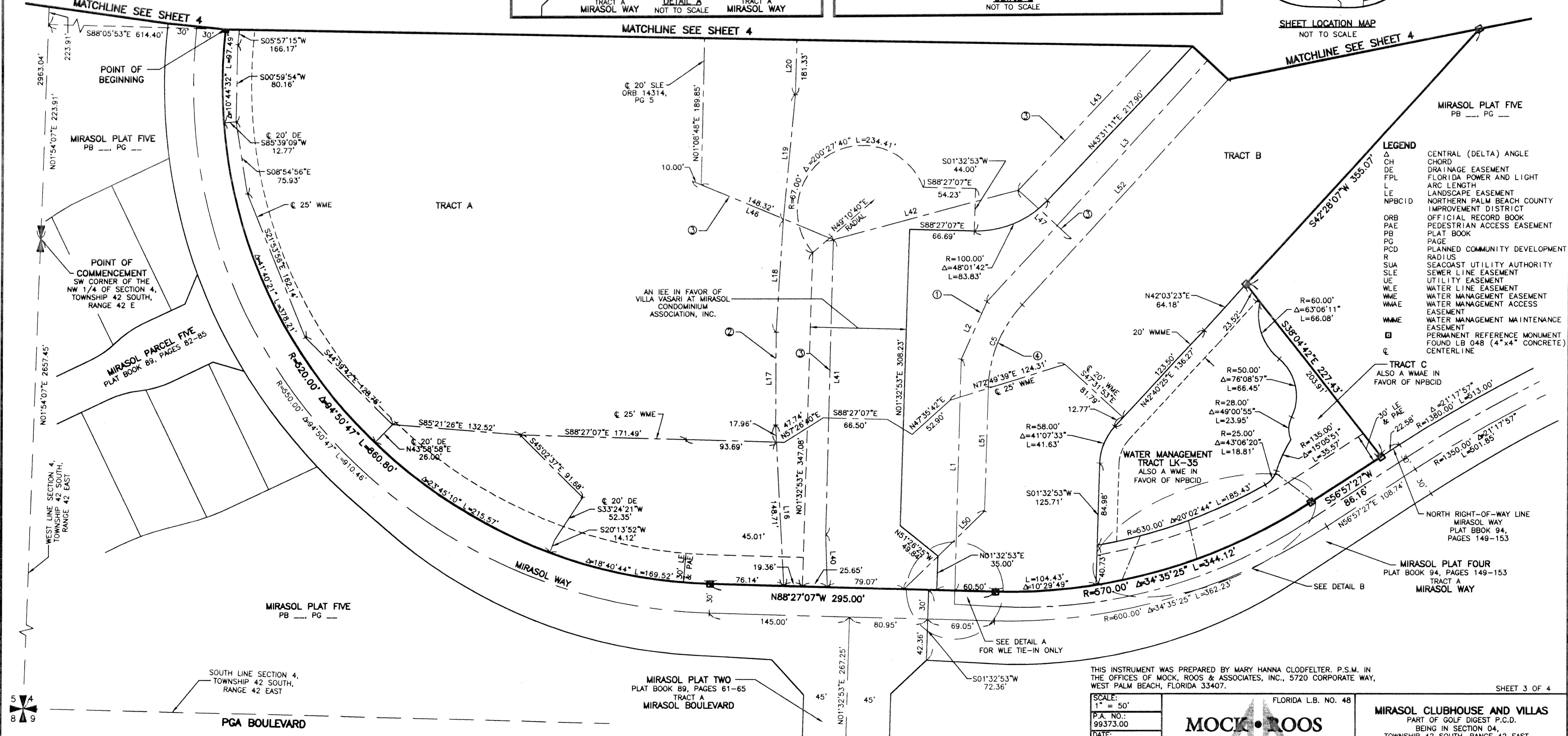
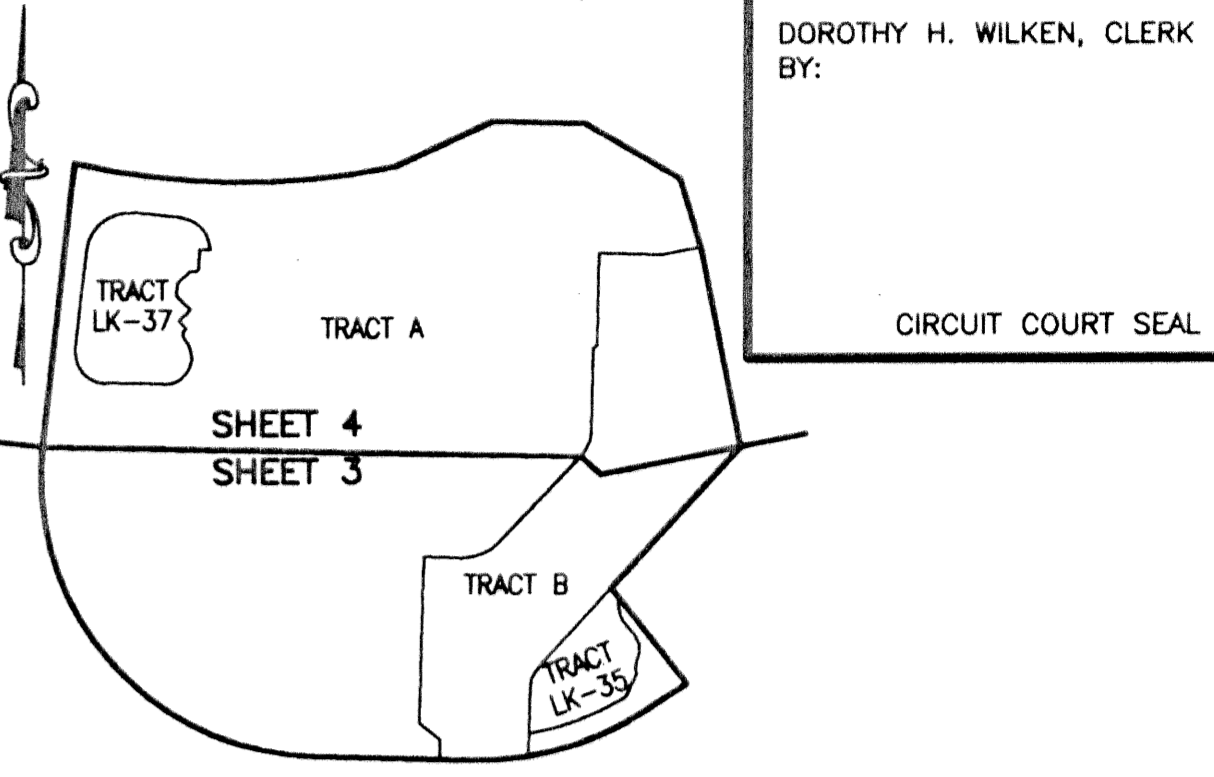
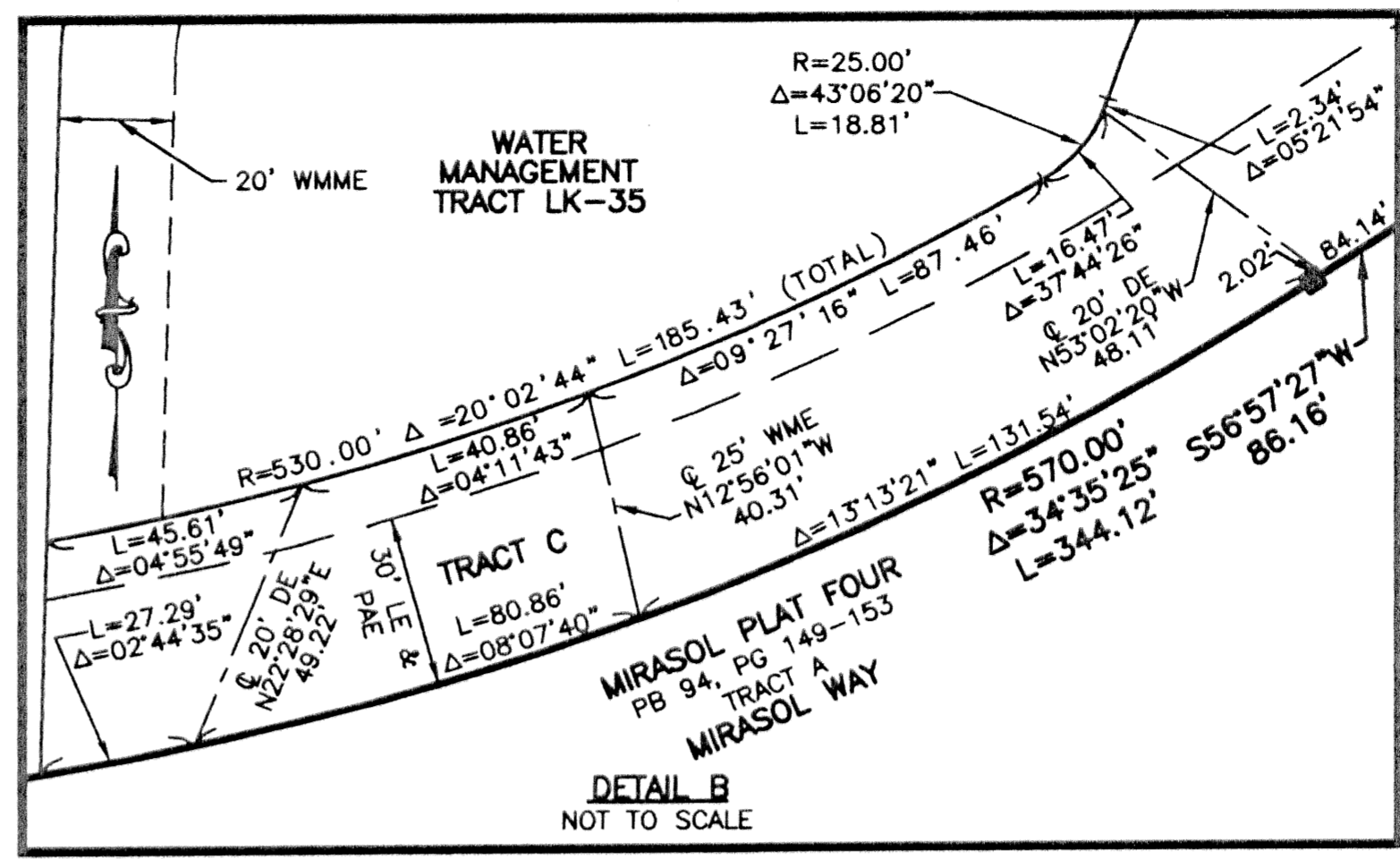
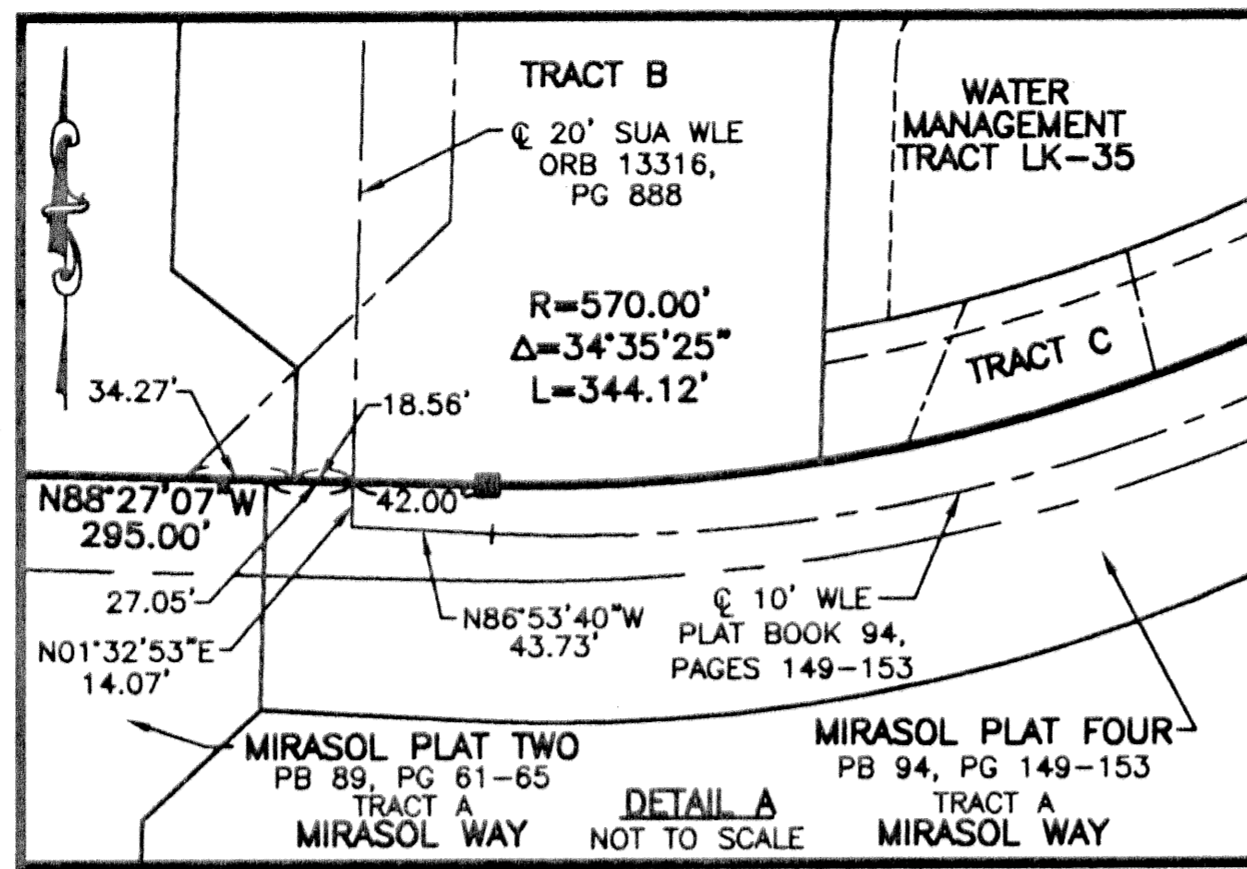
LINE	BEARING	DISTANCE	LINE	BEARING	DISTANCE
L50	N46°02'42"E	115.60'	L63	N78°22'29"W	47.80'
L51	N01°31'45"E	129.02'	L64	N63°38'46"W	9.11'
L52	N42°27'41"E	314.42'	L65	N17°59'06"W	11.36'
L53	N01°06'50"E	8.39'	L66	N08°42'34"E	22.47'
L54	N09°14'11"W	41.40'	L67	N00°00'09"W	44.54'
L55	N01°29'48"E	75.02'	L68	N09°50'20"E	26.76'
L56	N34°08'49"W	96.62'	L69	N68°43'05"E	17.00'
L57	N37°55'14"E	2.20'	L70	S12°12'42"W	25.05'
L58	N00°57'24"W	12.80'	L71	S28°05'52"W	27.21'
L59	N00°40'04"W	56.07'	L72	S41°16'52"W	74.44'
L60	N65°35'50"W	33.81'	L73	S12°07'52"W	24.22'
L61	N73°12'23"W	25.96'	L74	N81°17'26"W	13.15'
L62	N52°03'15"W	35.51'			

CURVE	RADIUS	CENTRAL ANGLE	ARC LENGTH
C5	132.00'	40°55'56"	94.30'
C6	218.00'	41°20'51"	157.32'
C7	168.00'	10°21'01"	30.35'
C8	232.00'	10°43'59"	43.46'

② 10' & 12' FPL(L39 ONLY) ORB 14086, PG 131

LINE	BEARING	DISTANCE	LINE	BEARING	DISTANCE
L16	N03°03'27"W	166.67'	L28	N49°10'25"E	20.81'
L17	N00°09'06"E	97.02'	L29	N03°01'45"E	100.14'
L18	N03°16'49"E	116.50'	L30	N10°57'26"E	26.62'
L19	N05°18'08"E	131.18'	L31	S89°39'33"E	124.87'
L20	N01°26'18"E	184.83'	L32	N84°48'09"W	37.28'
L21	N80°13'46"E	25.70'	L33	S81°48'17"W	48.62'
L22	N58°54'15"E	69.96'	L34	S52°33'06"W	89.47'
L23	N75°02'23"E	22.02'	L35	N83°13'09"W	44.26'
L24	N62°37'36"E	45.92'	L36	N77°15'21"W	39.87'
L25	N45°00'37"E	19.91'	L37	N88°58'34"W	257.17'
L26	N18°31'00"E	36.22'	L38	S86°58'49"W	44.96'
L27	N02°12'51"E	42.38'	L39	N78°28'49"W	12.28'

CURVE	RADIUS	CENTRAL ANGLE	ARC LENGTH
C3	8.00'	78°47'28"	11.00'
C4	75.00'	29°15'11"	38.29'



- LEGEND**
- Δ CENTRAL (DELTA) ANGLE
 - CH CHORD
 - DE DRAINAGE EASEMENT
 - FPL FLORIDA POWER AND LIGHT
 - L ARC LENGTH
 - LE LANDSCAPE EASEMENT
 - NPBCID NORTHERN PALM BEACH COUNTY IMPROVEMENT DISTRICT
 - ORB OFFICIAL RECORD BOOK
 - PAE PEDESTRIAN ACCESS EASEMENT
 - PB PLAT BOOK
 - PG PAGE
 - PCD PLANNED COMMUNITY DEVELOPMENT
 - RADIUS
 - SUA SEACOAST UTILITY AUTHORITY
 - SLE SEWER LINE EASEMENT
 - UE UTILITY EASEMENT
 - WLE WATER LINE EASEMENT
 - WME WATER MANAGEMENT EASEMENT
 - WMAE WATER MANAGEMENT ACCESS EASEMENT
 - WMME WATER MANAGEMENT MAINTENANCE EASEMENT
 - PERMANENT REFERENCE MONUMENT FOUND LB 048 (4" x 4" CONCRETE) CENTERLINE

THIS INSTRUMENT WAS PREPARED BY MARY HANNA CLODFELTER, P.S.M. IN THE OFFICES OF MOCK, ROOS & ASSOCIATES, INC., 5720 CORPORATE WAY, WEST PALM BEACH, FLORIDA 33407.

SCALE: 1" = 50'

P.A. NO.: 99373.00

DATE: NOVEMBER 2002

DRAWING NO.: 42-42-04-148

FLORIDA L.B. NO. 48

MOCK • ROOS
ENGINEERS • SURVEYORS • PLANNERS

5720 Corporate Way, West Palm Beach, Florida 33407
(561) 683-3113, fax 478-7248

SHEET 3 OF 4

MIRASOL CLUBHOUSE AND VILLAS
PART OF GOLF DIGEST P.C.D.
BEING IN SECTION 04,
TOWNSHIP 42 SOUTH, RANGE 42 EAST,
CITY OF PALM BEACH GARDENS,
PALM BEACH COUNTY, FLORIDA