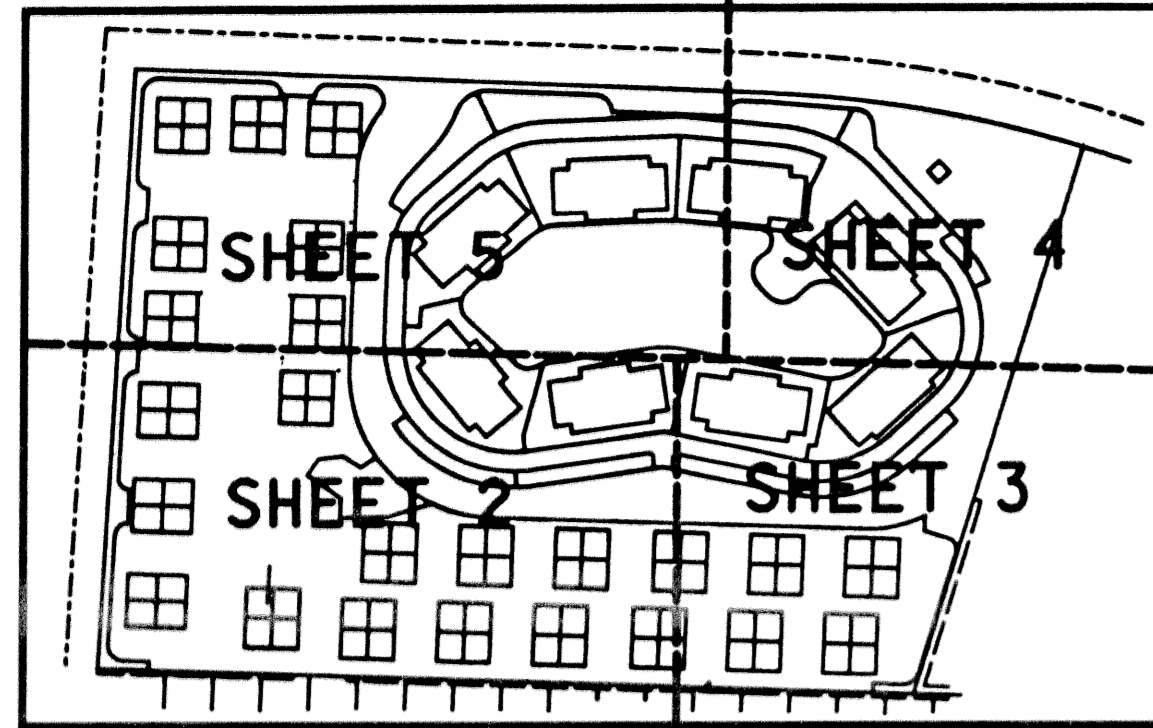


SHEET INDEX



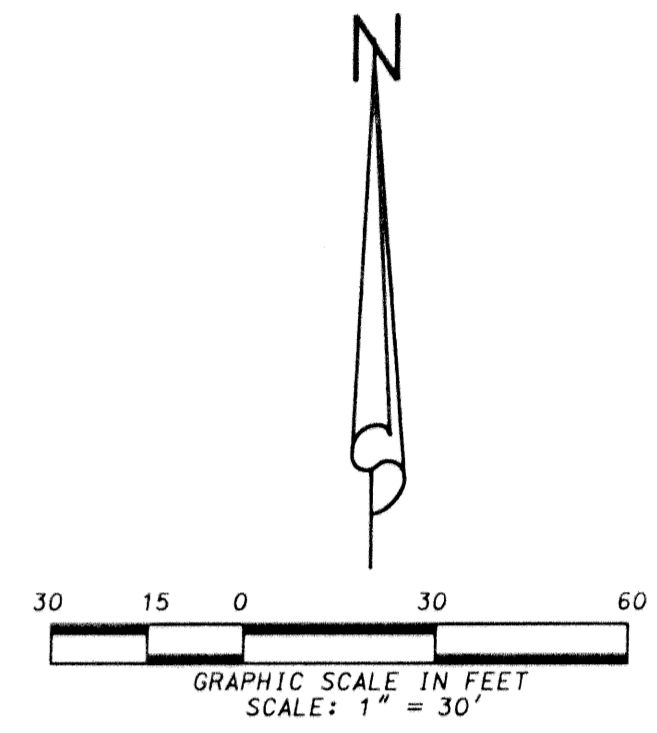
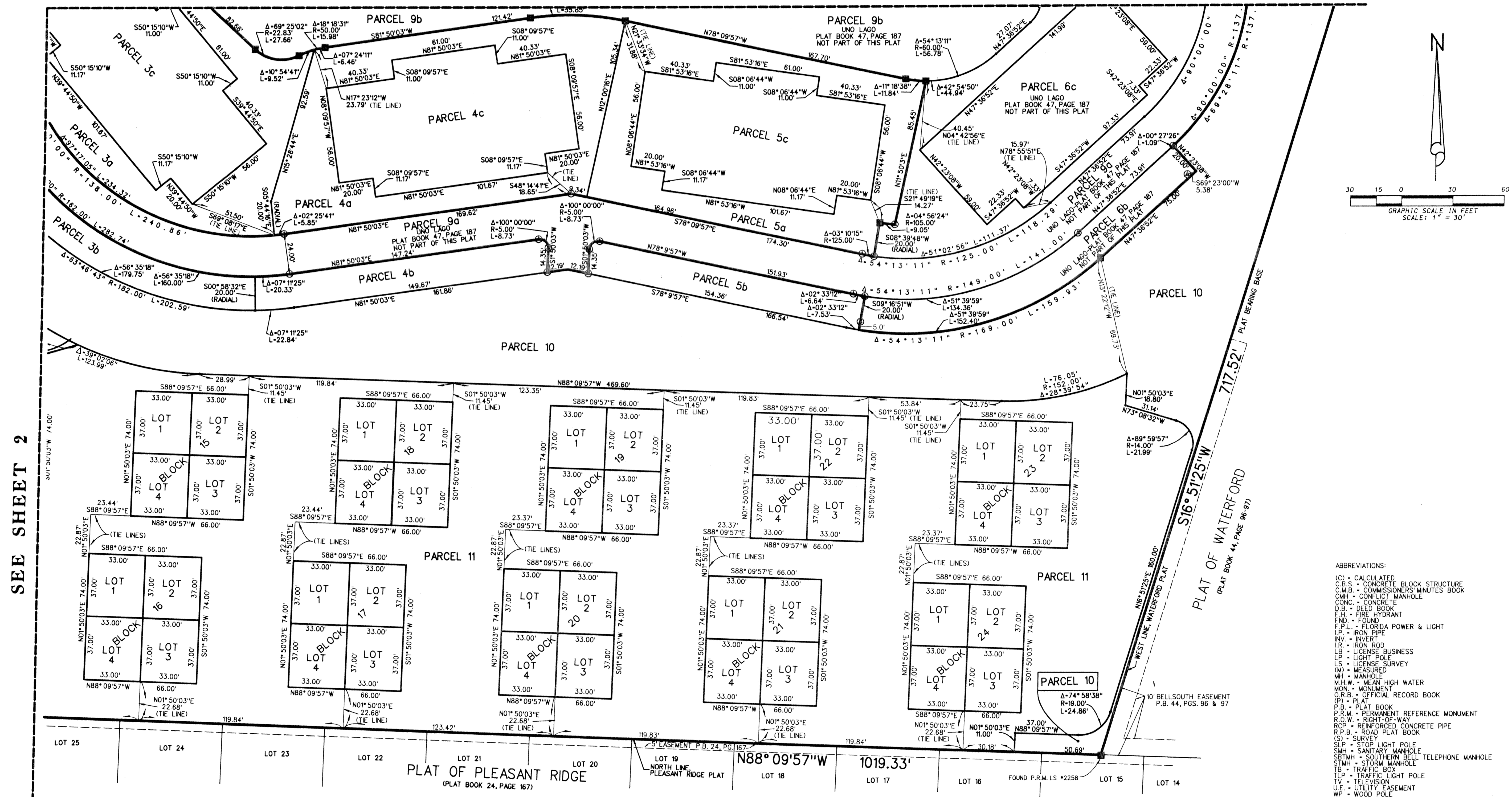
# UNO LAGO REPLAT

SITUATE IN SECTION 33, TOWNSHIP 41 SOUTH, RANGE 43 EAST,  
TOWN OF JUNO BEACH, PALM BEACH COUNTY, FLORIDA,  
BEING A REPLAT OF UNO LAGO, ACCORDING TO THE PLAT THEREOF,  
RECORDED IN PLAT BOOK 47, PAGES 187 AND 188 PUBLIC RECORDS OF  
PALM BEACH COUNTY, FLORIDA, LESS AND EXCEPTING:  
BLOCKS 1,2,3,4,5,6,7 AND 9, PARCELS 6a,6b,6c,7a,7b,7c,7d,9a AND 9b

APRIL, 2003

SHEET 3 OF 5

SEE SHEET 4



SEE SHEET 2

- ABBREVIATIONS:
- (C) - CALCULATED
  - C.B.S. - CONCRETE BLOCK STRUCTURE
  - C.M.B. - COMMISSIONER'S MINUTES BOOK
  - CMH - CONFLICT MANHOLE
  - CONC. - CONCRETE
  - D.B. - DEED BOOK
  - F.H. - FIRE HYDRANT
  - FOUN. - FOUND
  - F.P.L. - FLORIDA POWER & LIGHT
  - I.P. - IRON PIPE
  - INV. - INVERT
  - IR. - IRON ROD
  - LB. - LICENSE BUSINESS
  - LP. - LIGHT POLE
  - LS. - LICENSE SURVEY
  - (M) - MEASURED
  - MH - MANHOLE
  - M.H.W. - MEAN HIGH WATER
  - MON. - MONUMENT
  - O.R.B. - OFFICIAL RECORD BOOK
  - (P) - PLAT
  - P.B. - PLAT BOOK
  - P.R.M. - PERMANENT REFERENCE MONUMENT
  - R.O.W. - RIGHT-OF-WAY
  - RCP - REINFORCED CONCRETE PIPE
  - R.P.B. - ROAD PLAT BOOK
  - (S) - SURVEY
  - SLP - STOP LIGHT POLE
  - SMH - SANITARY MANHOLE
  - SBTMH - SOUTHERN BELL TELEPHONE MANHOLE
  - STMH - STORM MANHOLE
  - TB - TRAFFIC BOX
  - TLP - TRAFFIC LIGHT POLE
  - TV - TELEVISION
  - U.E. - UTILITY EASEMENT
  - WP - WOOD POLE
  - WUP - WOOD UTILITY POLE
  - WV - WATER VALVE

THIS INSTRUMENT WAS PREPARED BY DAVID C. LIDBERG, IN AND FOR THE OFFICES OF LIDBERG LAND SURVEYING, INC., 675 WEST INDIANTOWN ROAD, SUITE 200, JUPITER, FLORIDA 33458. TELEPHONE (561) 746-8454.

**LIDBERG LAND SURVEYING, INC.**  
 675 West Indiantown Road, Suite 200,  
 Jupiter, Florida 33458 TEL. 561-746-8454

|   |         |      |                |
|---|---------|------|----------------|
| CAD: K:\_UST \ 334143 \ 2602306 \ SHEET3.DGN  |         |      |                |
| REF: K:\_UST \ 334143 \ 2602306 \ 2602306.DGN |         |      |                |
| FLD.  | FB.     | PG.  | JOB 02-260-306 |
| OFF. L.J.C.                                   |         |      | DATE 02/19/03  |
| CKD. D.C.L.                                   | SHEET 3 | OF 5 | DWG. 02-260P   |