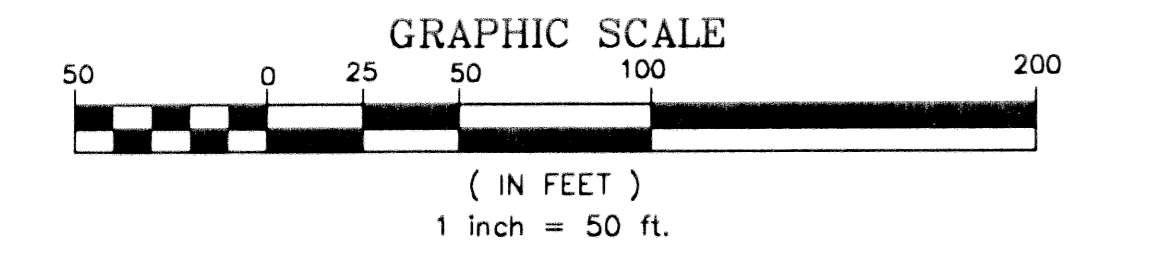


STATE OF FLORIDA
COUNTY OF PALM BEACH
THIS PLAT WAS FILED FOR
RECORD AT _____ M.
THIS _____ DAY OF _____
A.D. 2003 AND DULY RECORDED
IN PLAT BOOK _____ ON
PAGES _____ AND _____
DOROTHY H. WILKEN
CLERK CIRCUIT COURT
BY: _____
DEPUTY CLERK

NOTES
COORDINATES, BEARINGS AND DISTANCES

COORDINATES SHOWN ARE GRID
DATUM = NAD 83 1990 ADJUSTMENT
ZONE = FLORIDA EAST
LINEAR UNIT = US SURVEY FEET
COORDINATE SYSTEM 1983 STATE PLANE
TRANSVERSE MERCATOR PROJECTION
ALL DISTANCES ARE GROUND
SCALE FACTOR = 1.0000195
GROUND DISTANCE X SCALE FACTOR = GRID DISTANCE
BEARINGS AS SHOWN HEREON ARE GRID DATUM, NAD 83 1990
ADJUSTMENT, FLORIDA EAST ZONE.

N89°26'07"E (GRID BEARING) 00°24'17" = BEARING ROTATION
N89°01'50"E (GRID BEARING) (PLAT TO GRID) COUNTERCLOCKWISE
NORTH LINE THIS PLAT

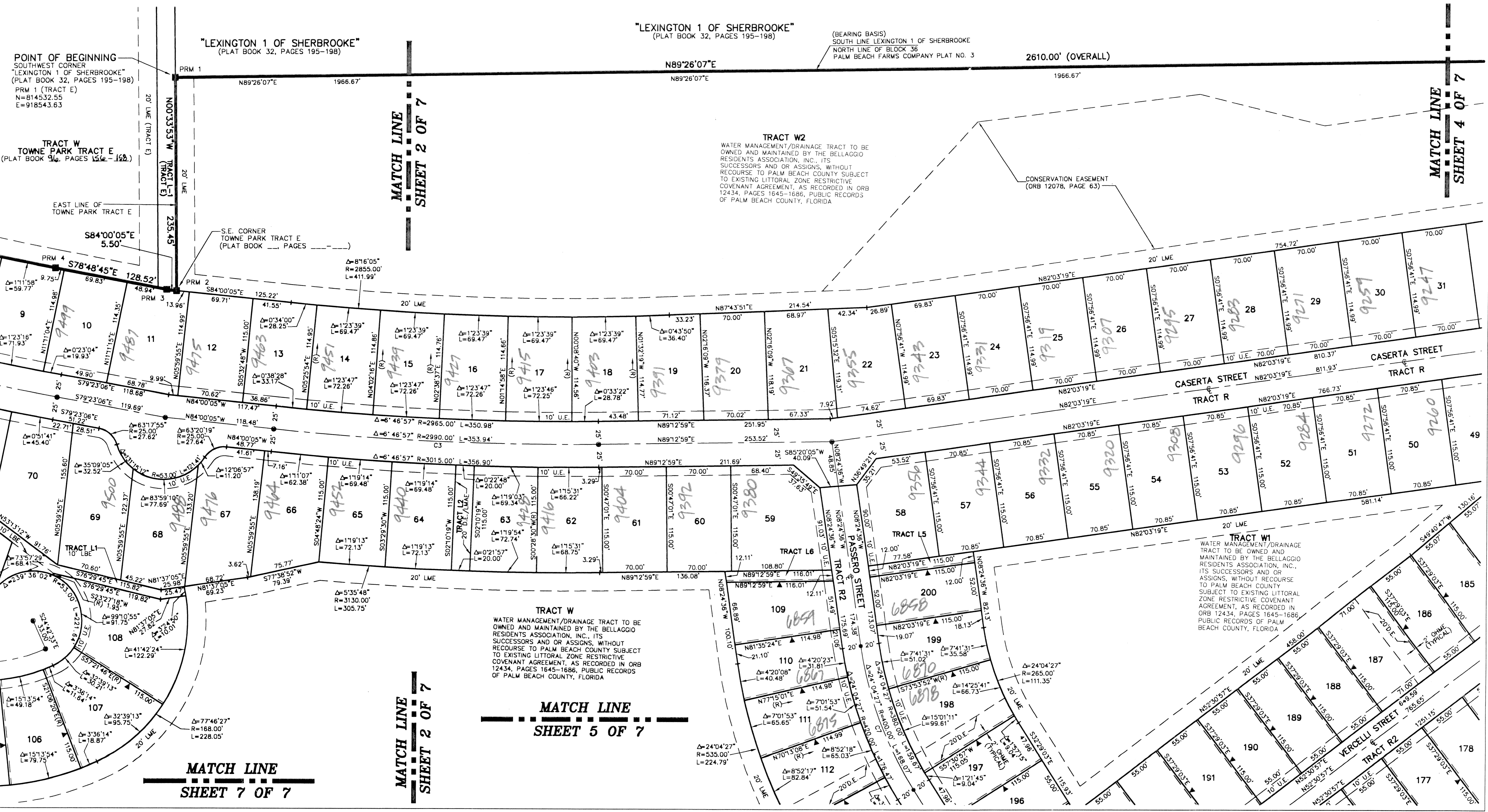


TOWNE PARK TRACT F

A PLANNED UNIT DEVELOPMENT BEING A PART OF TOWNE PARK PUD
BEING A REPLAT OF A PORTION OF BLOCKS 36 AND 43, "PALM BEACH FARMS COMPANY PLAT NO. 3,
AS RECORDED IN PLAT BOOK 2, PAGES 45 THROUGH 54 OF THE PUBLIC RECORDS OF PALM BEACH COUNTY, FLORIDA,
LYING IN SECTIONS 6 AND 7 TOWNSHIP 45 SOUTH, RANGE 42 EAST, PALM BEACH COUNTY, FLORIDA

THIS INSTRUMENT PREPARED BY
DAVID P. LINDLEY
OF
CAULFIELD and WHEELER, INC.
SURVEYORS - ENGINEERS - PLANNERS
7301-A WEST PALMETTO PARK ROAD, SUITE 100A
BOCA RATON, FLORIDA 33433 - (561)392-1991
SEPTEMBER - 2002

SHEET 3 OF 7



POINT OF BEGINNING
SOUTHWEST CORNER
"LEXINGTON 1 OF SHERBROOKE"
(PLAT BOOK 32, PAGES 195-198)
PRM 1 (TRACT E)
N=814532.55
E=918543.63

TRACT W
TOWNE PARK TRACT E
(PLAT BOOK 96, PAGES 152-158)

"LEXINGTON 1 OF SHERBROOKE"
(PLAT BOOK 32, PAGES 195-198)

(BEARING BASIS)
SOUTH LINE LEXINGTON 1 OF SHERBROOKE
NORTH LINE OF BLOCK 36
PALM BEACH FARMS COMPANY PLAT NO. 3

2610.00' (OVERALL)

TRACT W2
WATER MANAGEMENT/ DRAINAGE TRACT TO BE
OWNED AND MAINTAINED BY THE BELLAGGIO
RESIDENTS ASSOCIATION, INC., ITS
SUCCESSORS AND OR ASSIGNS, WITHOUT
RECOURSE TO PALM BEACH COUNTY SUBJECT
TO EXISTING LITTORAL ZONE RESTRICTIVE
COVENANT AGREEMENT, AS RECORDED IN ORB
12434, PAGES 1645-1686, PUBLIC RECORDS
OF PALM BEACH COUNTY, FLORIDA

CONSERVATION EASEMENT
(ORB 12078, PAGE 63)

EAST LINE OF
TOWNE PARK TRACT E

"LEXINGTON 1 OF SHERBROOKE"
(PLAT BOOK 32, PAGES 195-198)

S84°00'05"E
5.50'

S78°48'45"E
128.52'

S.E. CORNER
TOWNE PARK TRACT E
(PLAT BOOK ... PAGES ...)

S84°00'05"E
125.22'

S05°32'48"W
115.00'

S05°32'48"W
114.95'

S05°32'48"W
114.86'

S05°32'48"W
114.76'

S05°32'48"W
114.66'

S05°32'48"W
114.56'

S05°32'48"W
114.46'

S05°32'48"W
114.36'

S05°32'48"W
114.26'

S05°32'48"W
114.16'

S05°32'48"W
114.06'

S05°32'48"W
113.96'

S05°32'48"W
113.86'

S05°32'48"W
113.76'

S05°32'48"W
113.66'

S05°32'48"W
113.56'

MATCH LINE
SHEET 2 OF 7

MATCH LINE
SHEET 2 OF 7

MATCH LINE
SHEET 5 OF 7

MATCH LINE
SHEET 7 OF 7

MATCH LINE
SHEET 4 OF 7

SUBDIVISION TOWNE PARK TRACT F
BOOK 96 FLOOD MAP # 100A
FLOOD ZONE B ZONING PUD
QUAD # 004 ZIP CODE 33447
SE
TAZ 0741
PUD NAME

TRACT W1
WATER MANAGEMENT/ DRAINAGE
TRACT TO BE OWNED AND
MAINTAINED BY THE BELLAGGIO
RESIDENTS ASSOCIATION, INC.,
ITS SUCCESSORS AND OR
ASSIGNS, WITHOUT RECOURSE
TO PALM BEACH COUNTY
SUBJECT TO EXISTING LITTORAL
ZONE RESTRICTIVE COVENANT
AGREEMENT, AS RECORDED IN
ORB 12434, PAGES 1645-1686,
PUBLIC RECORDS OF PALM
BEACH COUNTY, FLORIDA

TRACT W
WATER MANAGEMENT/ DRAINAGE TRACT TO BE
OWNED AND MAINTAINED BY THE BELLAGGIO
RESIDENTS ASSOCIATION, INC., ITS
SUCCESSORS AND OR ASSIGNS, WITHOUT
RECOURSE TO PALM BEACH COUNTY SUBJECT
TO EXISTING LITTORAL ZONE RESTRICTIVE
COVENANT AGREEMENT, AS RECORDED IN ORB
12434, PAGES 1645-1686, PUBLIC RECORDS
OF PALM BEACH COUNTY, FLORIDA