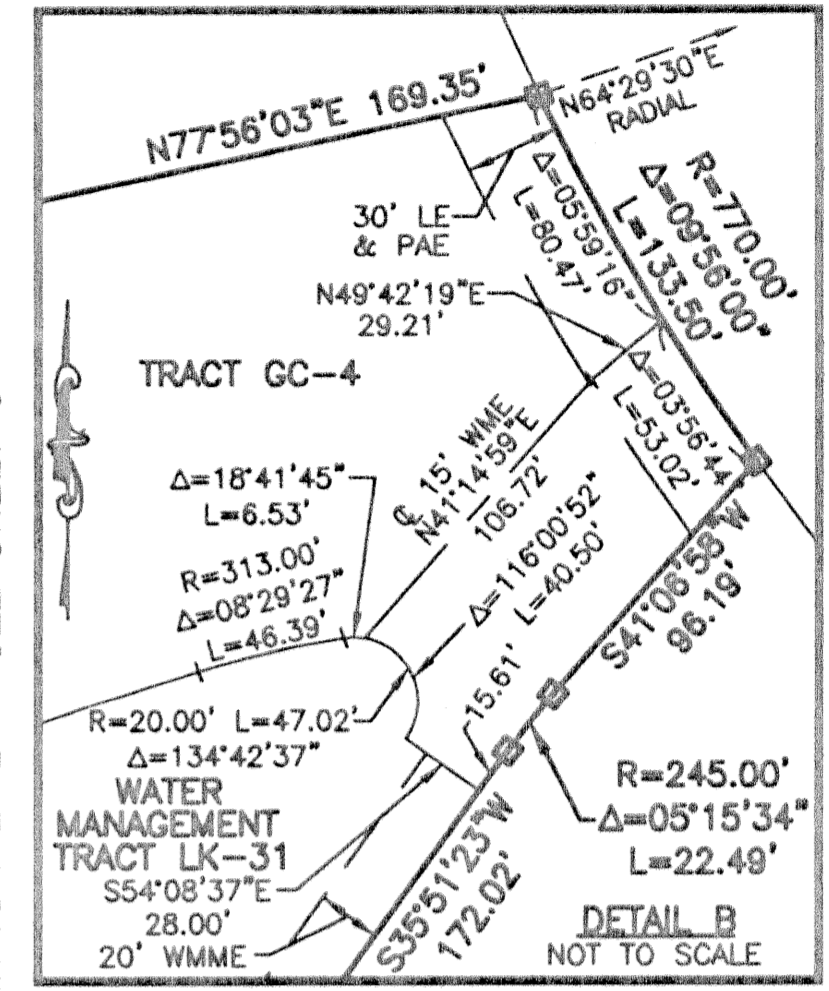
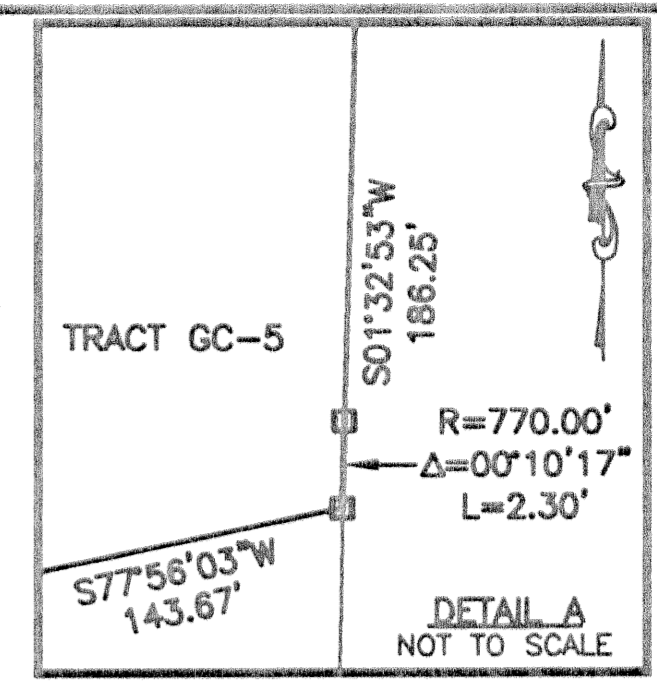
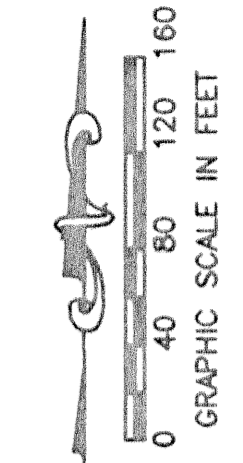


STATE OF FLORIDA
COUNTY OF PALM BEACH
THIS PLAT WAS FILED FOR
RECORD _____ DAY OF _____
AD, 2003 AND DULY RECORDED
IN PLAT BOOK _____ ON PAGES
_____ THROUGH _____
DOROTHY H. WILKEN, CLERK
BY: _____ D.C.

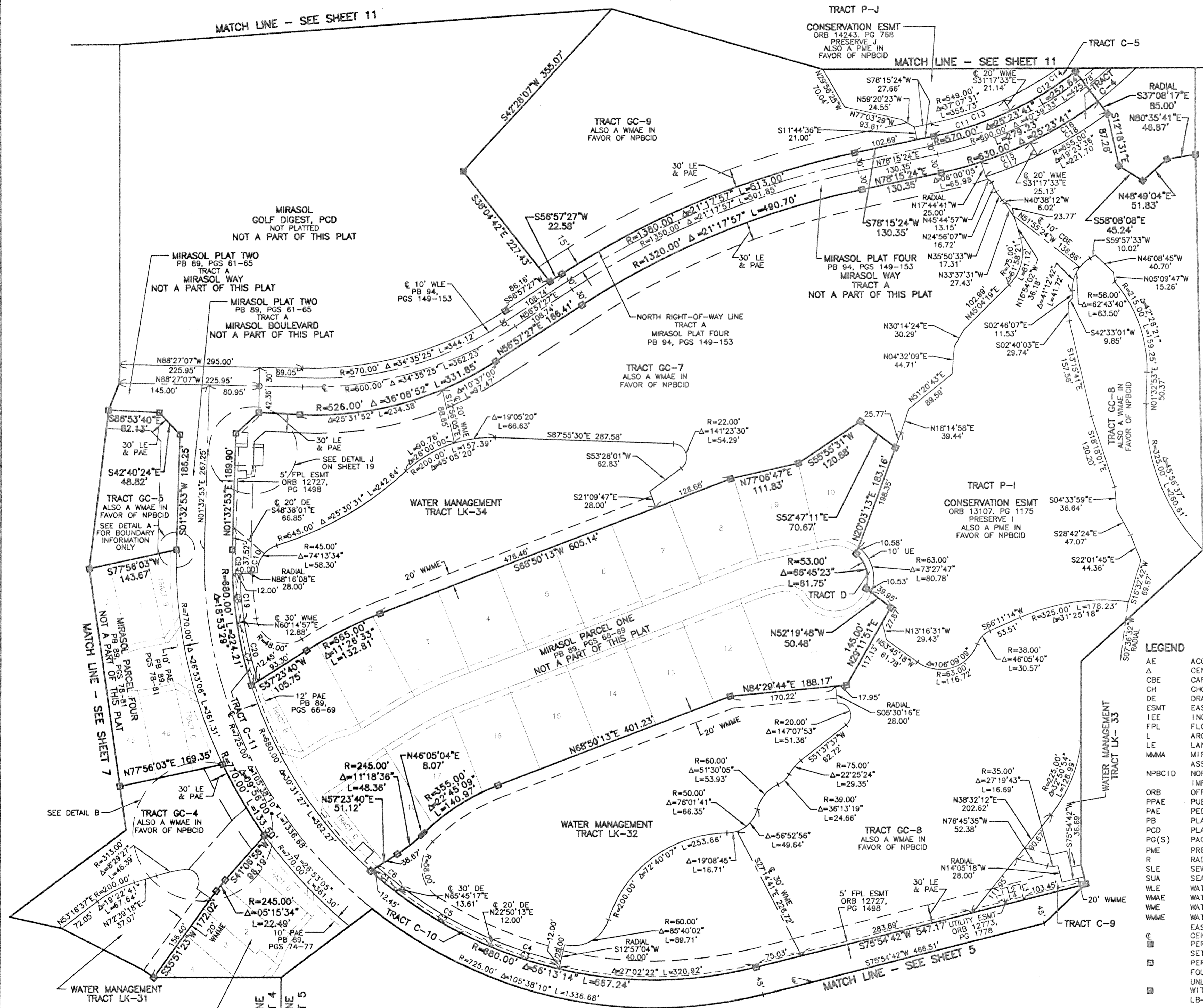
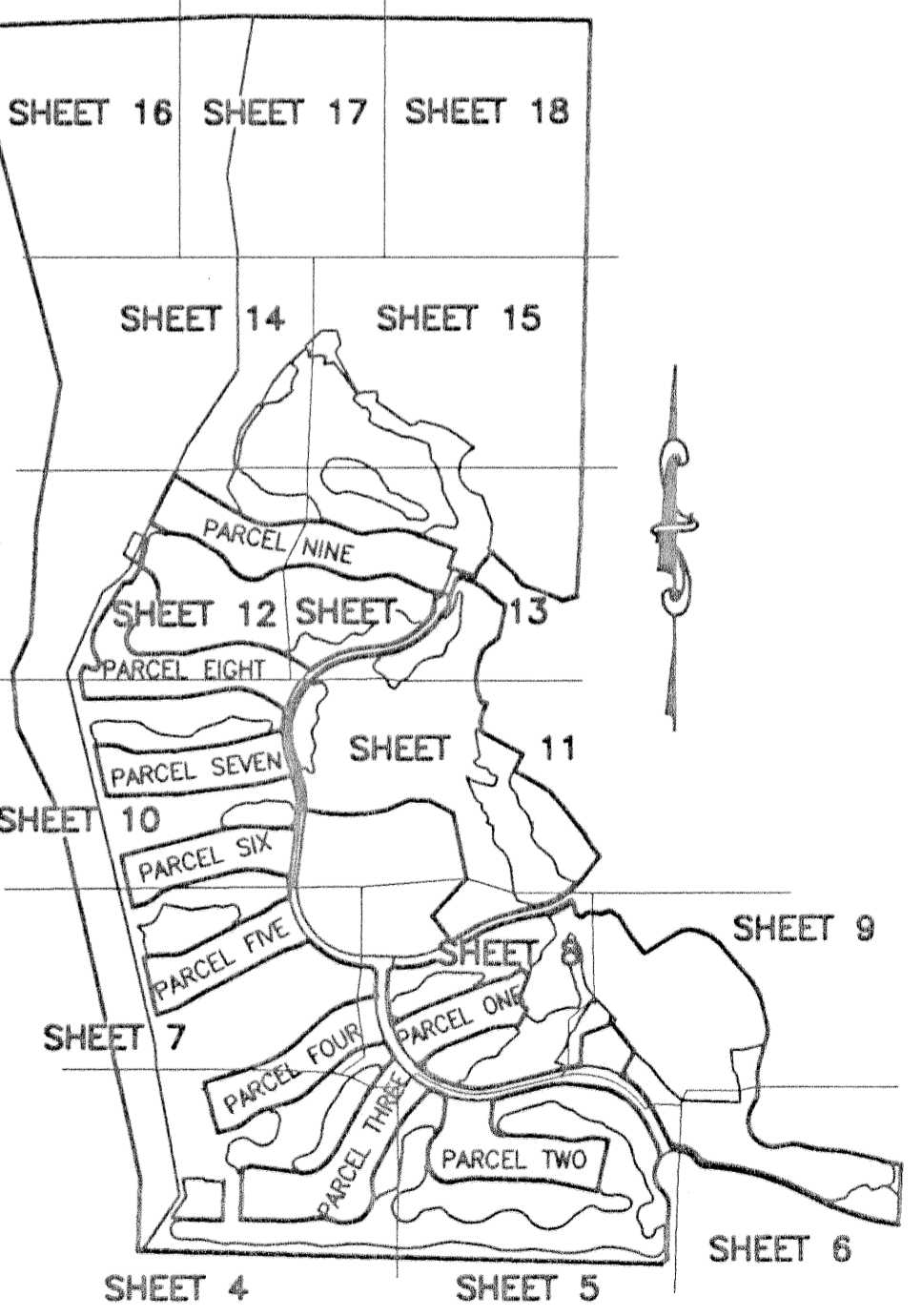
CIRCUIT COURT SEAL

LINE	BEARING	DISTANCE
L1	N14°05'18"W	26.00
L2	N75°54'42"E	30.00
L3	S14°05'18"E	26.00
L4	S75°54'42"W	30.00



CURVE	RADIUS	CENTRAL ANGLE	ARC LENGTH
C1	880.00'	4°15'44"	50.58'
C2	680.00'	15°01'54"	178.40'
C3	680.00'	9°53'14"	117.34'
C4	668.00'	9°53'14"	115.27'
C5	668.00'	14°29'09"	168.89'
C6	668.00'	4°31'38"	52.78'
C7	680.00'	8°38'59"	102.66'
C8	680.00'	6°57'45"	82.63'
C9	680.00'	3°16'45"	38.92'
C10	45.00'	42°55'28"	33.71'
C11	570.00'	13°05'51"	130.30'
C12	570.00'	24°01'40"	239.04'
C13	549.00'	12°50'59"	123.12'
C14	549.00'	24°16'33"	232.61'
C15	630.00'	7°42'46"	84.81'
C16	630.00'	11°40'50"	128.44'
C17	655.00'	7°56'10"	90.73'
C18	655.00'	11°27'26"	130.98'
C19	668.00'	6°33'56"	76.55'
C20	668.00'	8°45'56"	102.20'

- LEGEND**
- AE ACCESS EASEMENT
 - Δ CENTRAL (DELTA) ANGLE
 - CBE CART BRIDGE EASEMENT
 - CH CHORD
 - DE DRAINAGE EASEMENT
 - ESMT EASEMENT
 - IEE INGRESS/EGRESS EASEMENT
 - FPL FLORIDA POWER AND LIGHT
 - L ARC LENGTH
 - LE LANDSCAPE EASEMENT
 - MMA MIRASOL MASTER MAINTENANCE ASSOCIATION
 - NPBCID NORTHERN PALM BEACH COUNTY IMPROVEMENT DISTRICT
 - ORB OFFICIAL RECORD BOOK
 - PPAE PUBLIC PEDESTRIAN ACCESS EASEMENT
 - PAE PEDESTRIAN ACCESS EASEMENT
 - PB PLAT BOOK
 - PCD PLANNED COMMUNITY DEVELOPMENT PAGE(S)
 - PME PRESERVE MAINTENANCE EASEMENT
 - R RADIUS
 - SLE SEWER LINE EASEMENT
 - SUA SEACOAST UTILITY AUTHORITY
 - WLE WATER LINE EASEMENT
 - WMAE WATER MANAGEMENT ACCESS EASEMENT
 - WME WATER MANAGEMENT EASEMENT
 - WMME WATER MANAGEMENT MAINTENANCE EASEMENT
 - CENTERLINE
 - PERMANENT REFERENCE MONUMENT SET LB-048 (4"x4" CONCRETE)
 - PERMANENT REFERENCE MONUMENT FOUND LB-048 (4"x4" CONCRETE)
 - UNLESS OTHERWISE NOTED WITNESS MONUMENT SET LB-048 (4"x4" CONCRETE)



MIRASOL PLAT FIVE

PART OF GOLF DIGEST P.C.D.
BEING IN SECTIONS 32 AND 33, TOWNSHIP 41 SOUTH, RANGE 42 EAST,
AND SECTIONS 04 AND 05, TOWNSHIP 42 SOUTH, RANGE 42 EAST,
CITY OF PALM BEACH GARDENS, PALM BEACH COUNTY, FLORIDA
SHEET 8 OF 19

THIS INSTRUMENT WAS PREPARED BY MARY HANNA CLODFELTER, P.S.M. IN THE OFFICES OF MOCK, ROOS & ASSOCIATES, INC., 5720 CORPORATE WAY, WEST PALM BEACH, FLORIDA 33407.

SCALE:
1" = 80'
P.A. NO.:
99367.00
DATE:
MAY, 2002
DRAWING NO.:
41-42-32-59

FLORIDA L.B. NO. 48

5720 Corporate Way, West Palm Beach, Florida 33407
(561) 663-3113, fax 478-7248

MIRASOL PLAT FIVE
PART OF GOLF DIGEST P.C.D.
BEING IN SECTIONS 32 AND 33,
TOWNSHIP 41 SOUTH, RANGE 42 EAST,
AND IN SECTIONS 04 AND 05,
TOWNSHIP 42 SOUTH, RANGE 42 EAST,
CITY OF PALM BEACH GARDENS,
PALM BEACH COUNTY, FLORIDA