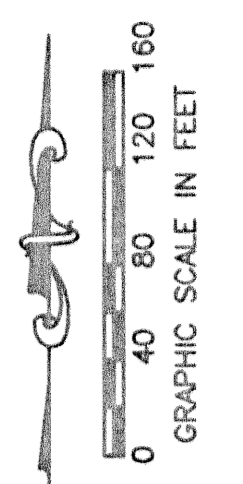
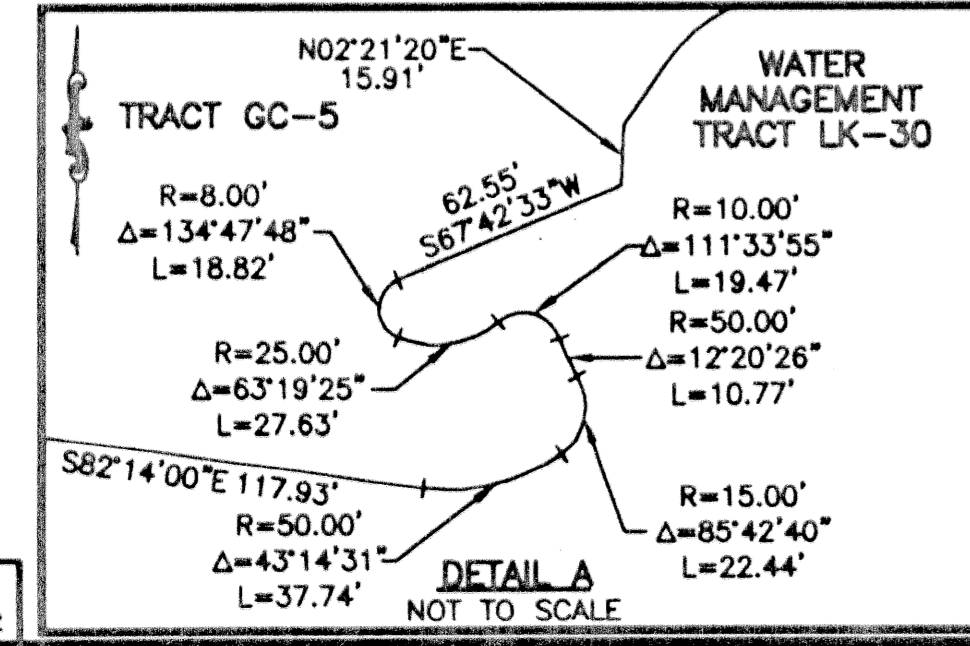
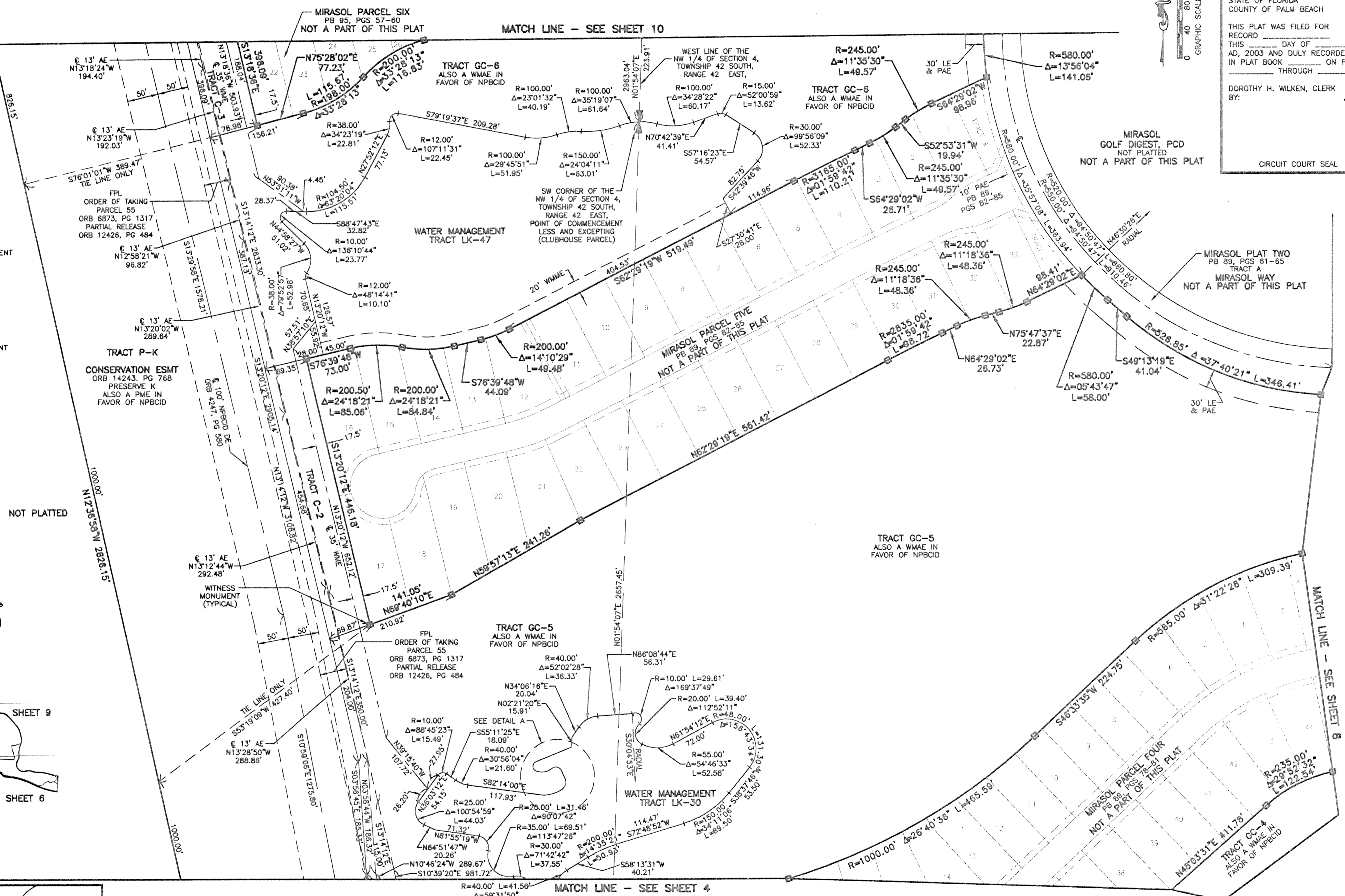
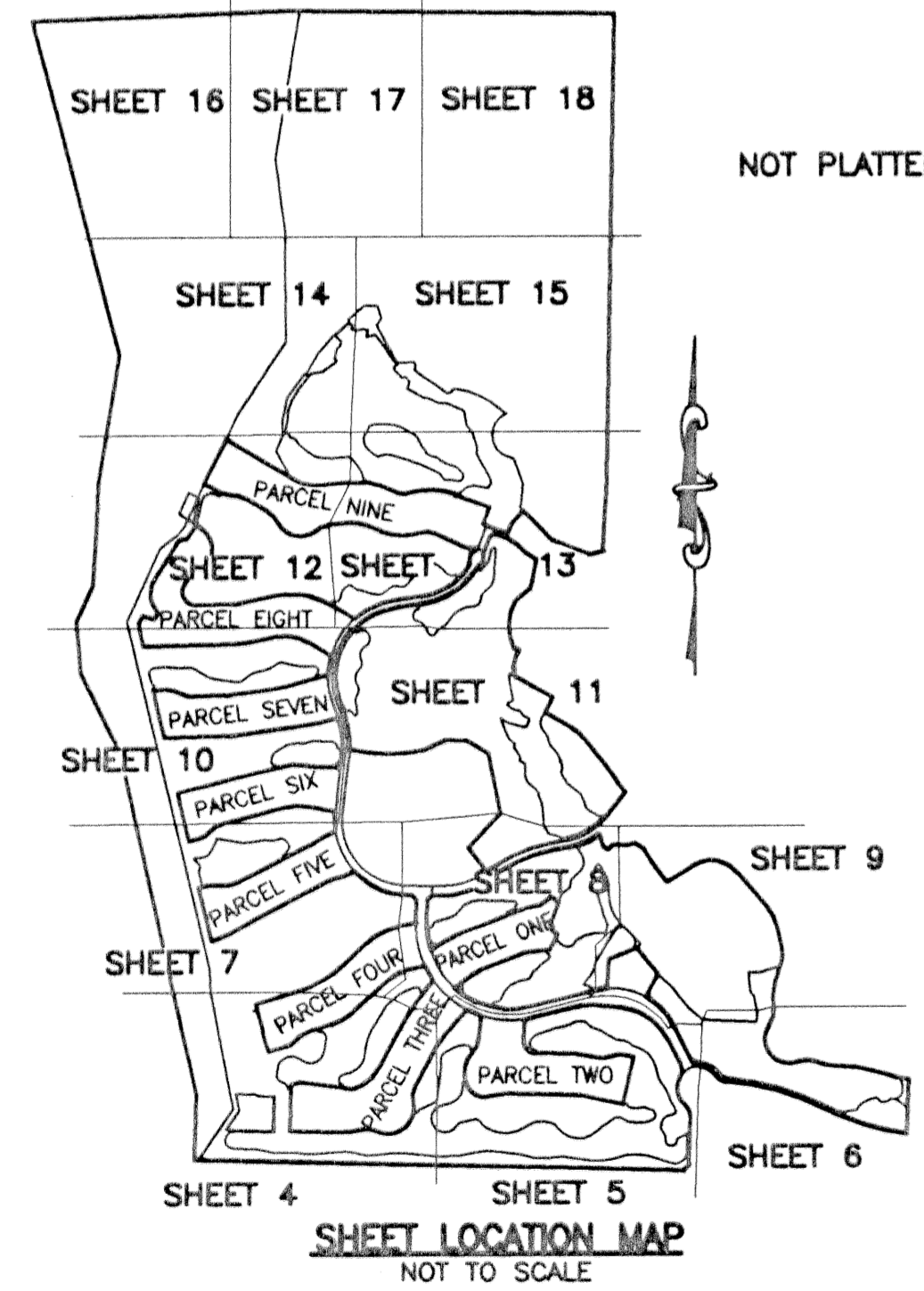


STATE OF FLORIDA
COUNTY OF PALM BEACH
THIS PLAT WAS FILED FOR
RECORD _____ DAY OF _____
AD, 2003 AND DULY RECORDED
IN PLAT BOOK _____ ON PAGES

THROUGH _____
DOROTHY H. WILKEN, CLERK
BY: _____, D.C.
CIRCUIT COURT SEAL



- LEGEND**
- AE ACCESS EASEMENT
 - Δ CENTRAL (DELTA) ANGLE
 - CBE CART BRIDGE EASEMENT
 - CH CHORD
 - DE DRAINAGE EASEMENT
 - ESMT EASEMENT
 - IEE INGRESS/EGRESS EASEMENT
 - FPL FLORIDA POWER AND LIGHT
 - L ARC LENGTH
 - LE LANDSCAPE EASEMENT
 - MMMA MIRASOL MASTER MAINTENANCE ASSOCIATION
 - NPBCID NORTHERN PALM BEACH COUNTY IMPROVEMENT DISTRICT OFFICIAL RECORD BOOK
 - ORB ORDER OF TAKING PARCEL 55 ORB 6873, PG 1317 PARTIAL RELEASE ORB 12426, PG 484
 - PPAE PUBLIC PEDESTRIAN ACCESS EASEMENT
 - PAE PEDESTRIAN ACCESS EASEMENT
 - PB PLAT BOOK
 - PCD PLANNED COMMUNITY DEVELOPMENT
 - PG(S) PAGE(S)
 - PME PRESERVE MAINTENANCE EASEMENT
 - R RADIUS
 - SLE SEWER LINE EASEMENT
 - SUA SEACOAST UTILITY AUTHORITY
 - WLE WATER LINE EASEMENT
 - WMAE WATER MANAGEMENT ACCESS EASEMENT
 - WME WATER MANAGEMENT EASEMENT
 - WMME WATER MANAGEMENT MAINTENANCE EASEMENT
 - C CENTERLINE
 - PERMANENT REFERENCE MONUMENT SET LB-048 (4"x4" CONCRETE)
 - FOUND LB-048 (4"x4" CONCRETE) UNLESS OTHERWISE NOTED
 - WITNESS MONUMENT SET LB-048 (4"x4" CONCRETE)



MIRASOL PLAT FIVE

PART OF GOLF DIGEST P.C.D.
BEING IN SECTIONS 32 AND 33, TOWNSHIP 41 SOUTH, RANGE 42 EAST,
AND SECTIONS 04 AND 05, TOWNSHIP 42 SOUTH, RANGE 42 EAST,
CITY OF PALM BEACH GARDENS, PALM BEACH COUNTY, FLORIDA
SHEET 7 OF 19

THIS INSTRUMENT WAS PREPARED BY MARY HANNA CLODFELTER, P.S.M. IN THE OFFICES OF MCKEY, ROOS & ASSOCIATES, INC., 5720 CORPORATE WAY, WEST PALM BEACH, FLORIDA 33407.

SCALE:
1" = 80'
P.A. NO.:
99367.00
DATE:
MAY, 2002
DRAWING NO.:
41-42-32-59

FLORIDA L.B. NO. 48
MCKEY ROOS
ENGINEERS PLANNERS
5720 Corporate Way, West Palm Beach, Florida 33407
(561) 663-3113, fax 478-7248

SHEET 7 OF 19
MIRASOL PLAT FIVE
PART OF GOLF DIGEST P.C.D.
BEING IN SECTIONS 32 AND 33,
TOWNSHIP 41 SOUTH, RANGE 42 EAST,
AND IN SECTIONS 04 AND 05,
TOWNSHIP 42 SOUTH, RANGE 42 EAST,
CITY OF PALM BEACH GARDENS,
PALM BEACH COUNTY, FLORIDA

S:\New\lay\pdp5\dms3\gcp5r02.dwg 12/23/2002 5:20:44 PM EST
REV: 12-23-02
CAD FILE:
TAYLGP5\GCP5R02