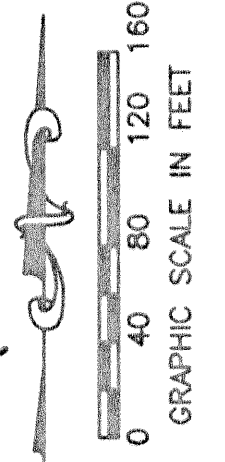


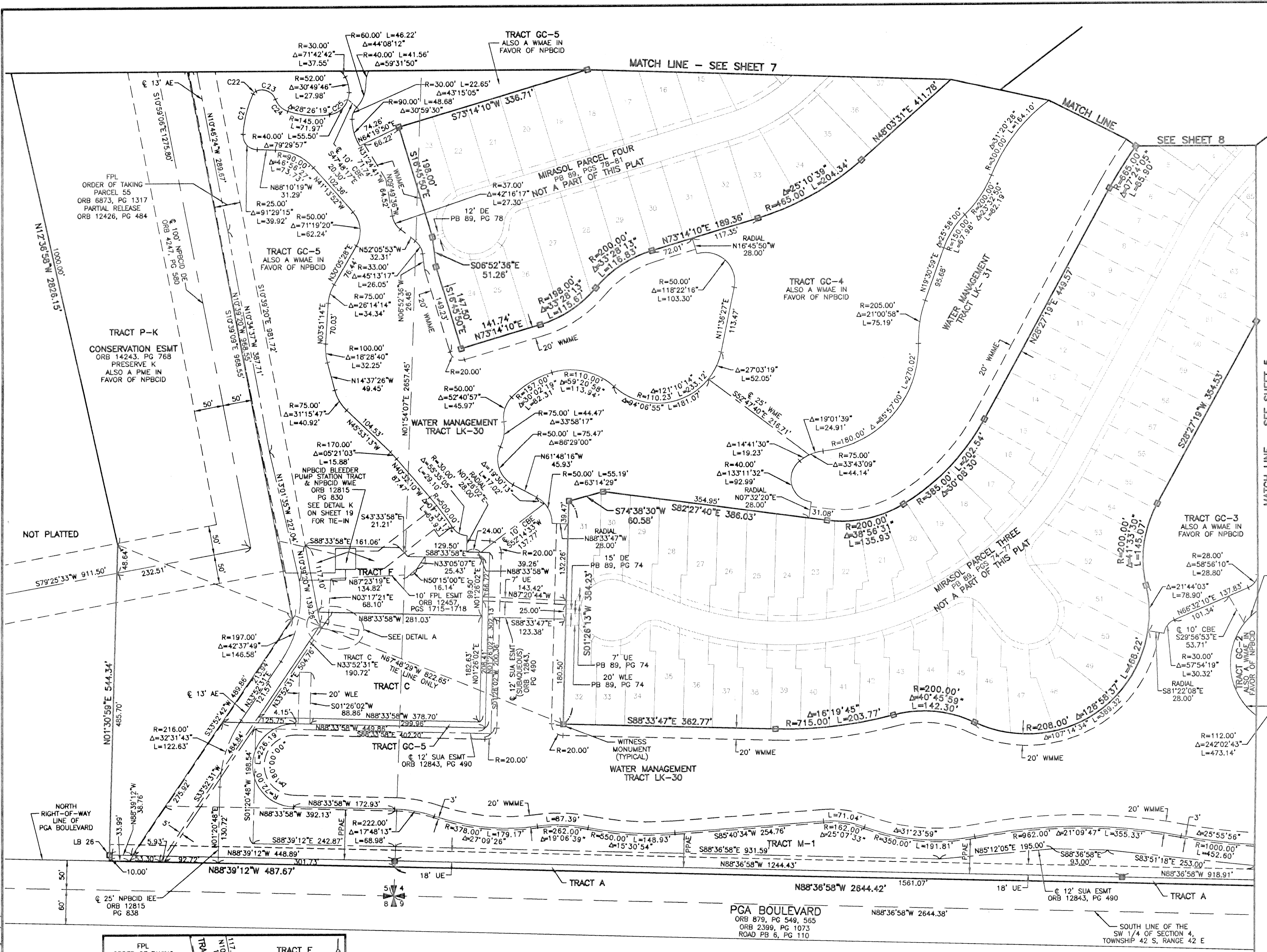
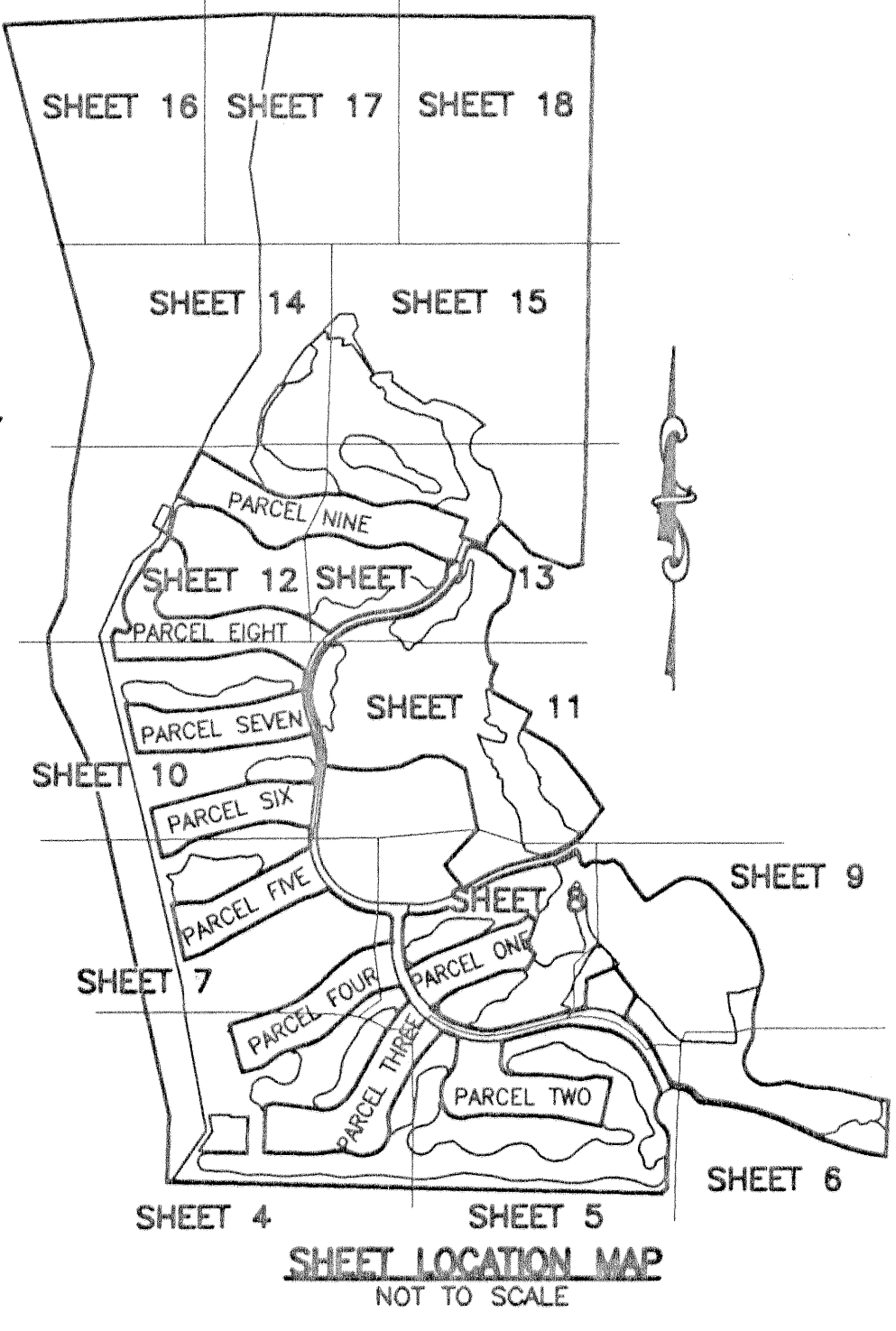
STATE OF FLORIDA  
COUNTY OF PALM BEACH  
THIS PLAT WAS FILED FOR  
RECORD THIS DAY OF  
AD, 2003 AND DULY RECORDED  
IN PLAT BOOK THROUGH ON PAGES  
BY: DOROTHY H. WILKEN, CLERK, D.C.



CIRCUIT COURT SEAL

LEGEND

- AE ACCESS EASEMENT
- Δ CENTRAL (DELTA) ANGLE
- CBE CART BRIDGE EASEMENT
- CH CHORD
- DE DRAINAGE EASEMENT
- ESMT EASEMENT
- IEE INGRESS/EGRESS EASEMENT
- FPL FLORIDA POWER AND LIGHT
- ARC LENGTH
- LE LANDSCAPE EASEMENT
- WMAA MIRASOL MASTER MAINTENANCE ASSOCIATION
- NPBCID NORTHERN PALM BEACH COUNTY IMPROVEMENT DISTRICT OFFICIAL RECORD BOOK
- ORB OFFICIAL RECORD BOOK
- PPAE PUBLIC PEDESTRIAN ACCESS EASEMENT
- PAE PEDESTRIAN ACCESS EASEMENT
- PB PLAT BOOK
- PCD PLANNED COMMUNITY DEVELOPMENT PAGE(S)
- PME PRESERVE MAINTENANCE EASEMENT
- R RADIUS
- SLE SEWER LINE EASEMENT
- SUA SEACOAST UTILITY AUTHORITY
- WLE WATER LINE EASEMENT
- WMAE WATER MANAGEMENT ACCESS EASEMENT
- WME WATER MANAGEMENT EASEMENT
- WVME WATER MANAGEMENT MAINTENANCE EASEMENT
- CENTERLINE PERMANENT REFERENCE MONUMENT SET LB-048 (4"x4" CONCRETE)
- PERMANENT REFERENCE MONUMENT FOUND LB-048 (4"x4" CONCRETE) UNLESS OTHERWISE NOTED WITNESS MONUMENT SET LB-048 (4"x4" CONCRETE)



# MIRASOL PLAT FIVE

PART OF GOLF DIGEST P.C.D.  
BEING IN SECTIONS 32 AND 33, TOWNSHIP 41 SOUTH, RANGE 42 EAST,  
AND SECTIONS 04 AND 05, TOWNSHIP 42 SOUTH, RANGE 42 EAST,  
CITY OF PALM BEACH GARDENS, PALM BEACH COUNTY, FLORIDA  
SHEET 4 OF 19

CURVE TABLE			
CURVE	RADIUS	CENTRAL ANGLE	ARC LENGTH
C21	200.00'	20°34'59"	71.85'
C22	10.00'	42°41'30"	7.45'
C23	25.00'	93°10'02"	40.85'
C24	35.00'	50°07'44"	30.82'
C25	40.00'	62°35'32"	43.70'

THIS INSTRUMENT WAS PREPARED BY MARY HANNA CLODFELTER, P.S.M. IN THE OFFICES OF MOCK, ROOS & ASSOCIATES, INC., 5720 CORPORATE WAY, WEST PALM BEACH, FLORIDA 33407.

FLORIDA L.B. NO. 48

**MOCK ROOS**  
ENGINEERS & PLANNERS

5720 Corporate Way, West Palm Beach, Florida 33407  
(561) 683-3113, fax 478-7248

MIRASOL PLAT FIVE  
PART OF GOLF DIGEST P.C.D.  
BEING IN SECTIONS 32 AND 33,  
TOWNSHIP 41 SOUTH, RANGE 42 EAST,  
AND IN SECTIONS 04 AND 05,  
TOWNSHIP 42 SOUTH, RANGE 42 EAST,  
CITY OF PALM BEACH GARDENS,  
PALM BEACH COUNTY, FLORIDA

