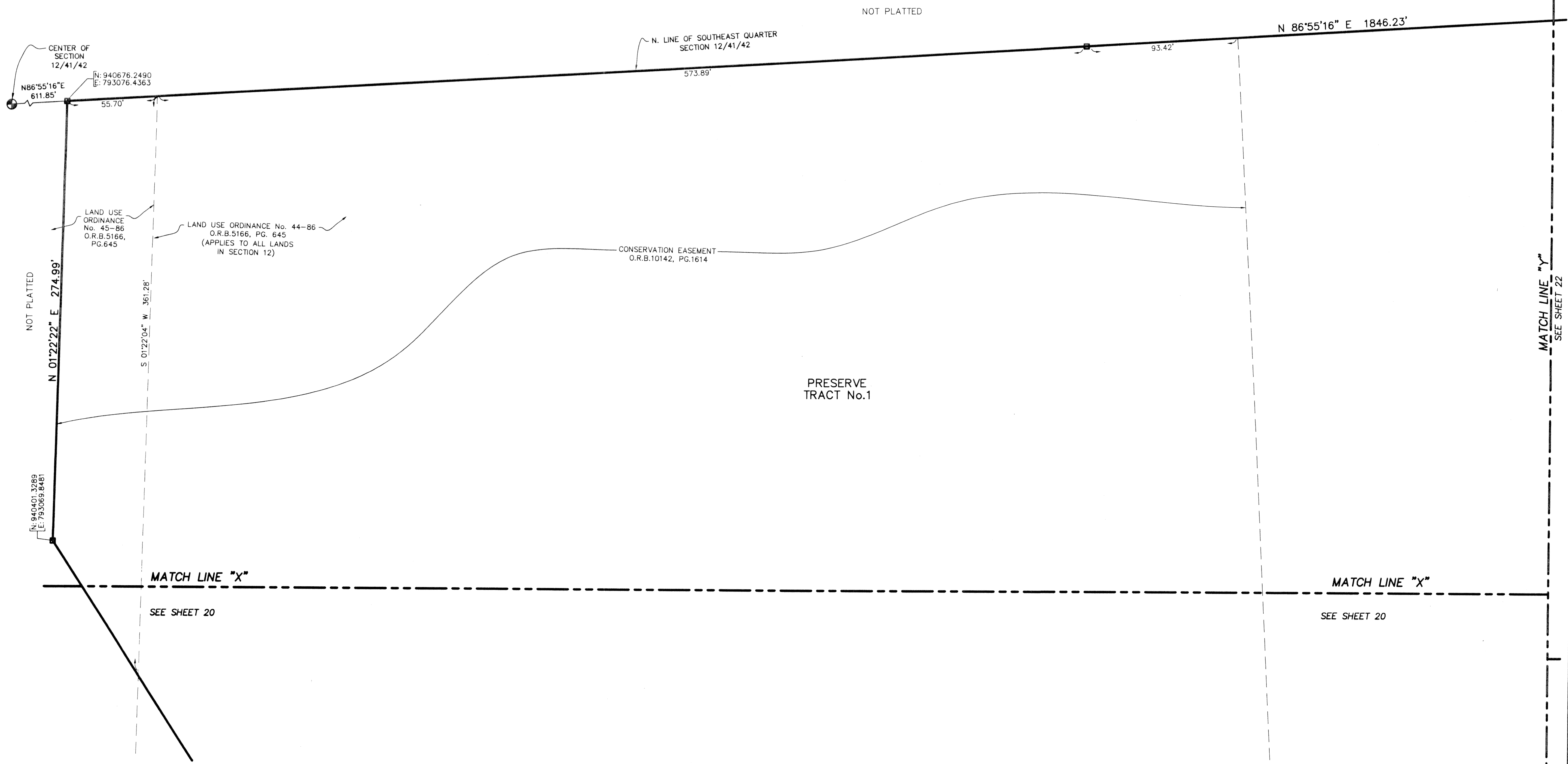
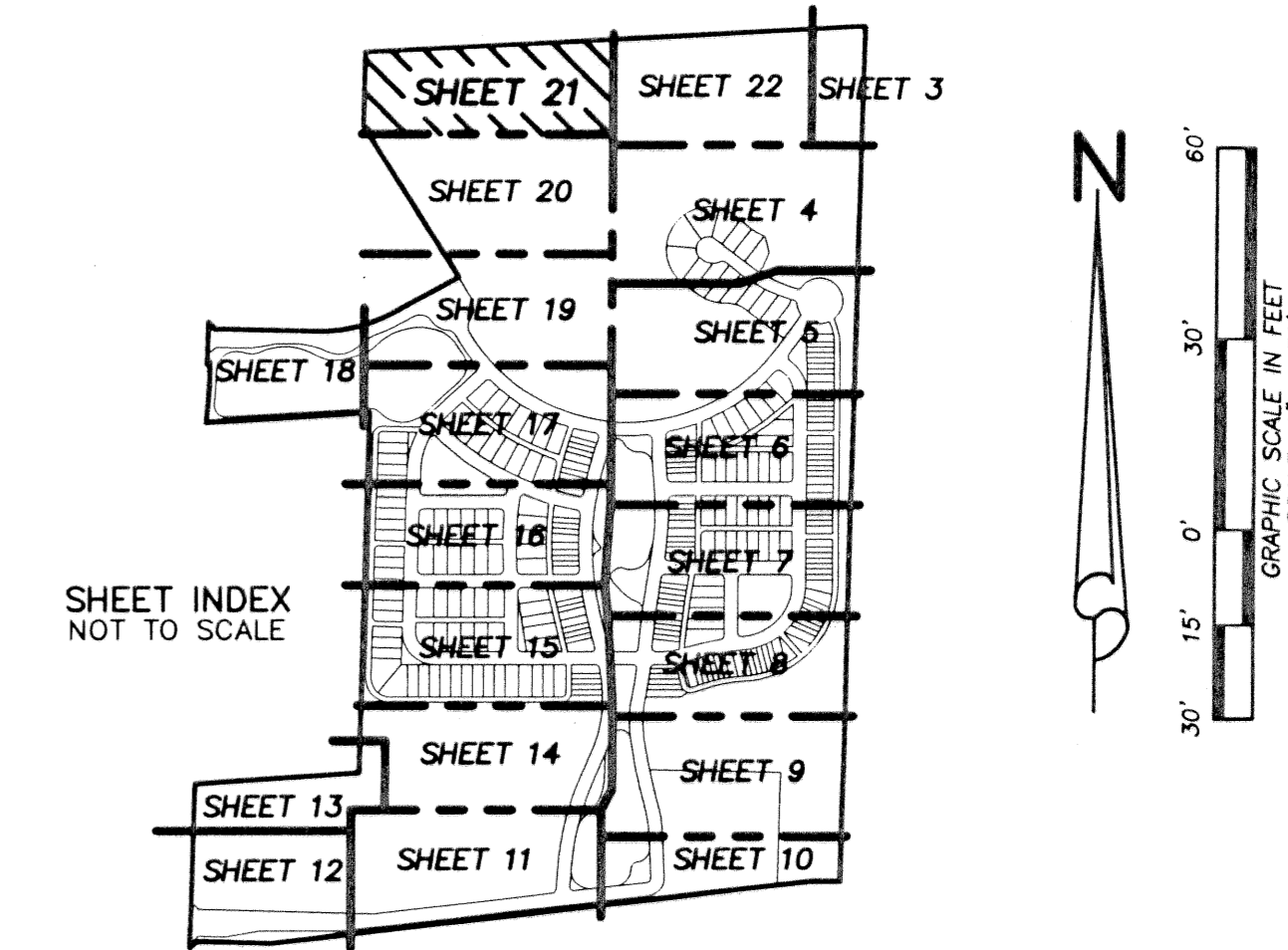


# BOTANICA

BEING A PARCEL OF LAND IN SECTION 12 AND 13, TOWNSHIP 41 SOUTH,  
RANGE 42 EAST, TOWN OF JUPITER, PALM BEACH COUNTY, FLORIDA.

JANUARY, 2003 SHEET 21 OF 22



CENTER OF SECTION 12/41/42  
N: 940676.2490  
E: 793076.4363

N. LINE OF SOUTHEAST QUARTER SECTION 12/41/42

LAND USE ORDINANCE No. 45-86 O.R.B.5166, PG.645

LAND USE ORDINANCE No. 44-86 O.R.B.5166, PG. 645 (APPLIES TO ALL LANDS IN SECTION 12)

CONSERVATION EASEMENT O.R.B.10142, PG.1614

PRESERVE TRACT No.1

MATCH LINE "X"

SEE SHEET 20

MATCH LINE "X"

SEE SHEET 20

MATCH LINE "Y" SEE SHEET 22

<b>LIDBERG LAND SURVEYING, INC.</b>		CAD K:\AUTOCAD\98-150\1508-306.DWG	
REF K:\AUTOCAD\		JOB 98-150-306	
FLD B.D.	FB. 000	PG. 00	DATE 02-22-02
OFF W.D.J.	000	00	
CKD W.D.J.	SHEET 21	OF 22	DWG D98-150P

675 West Indiantown Road, Suite 200, Jupiter, Florida 33458 TEL. 561-746-8454