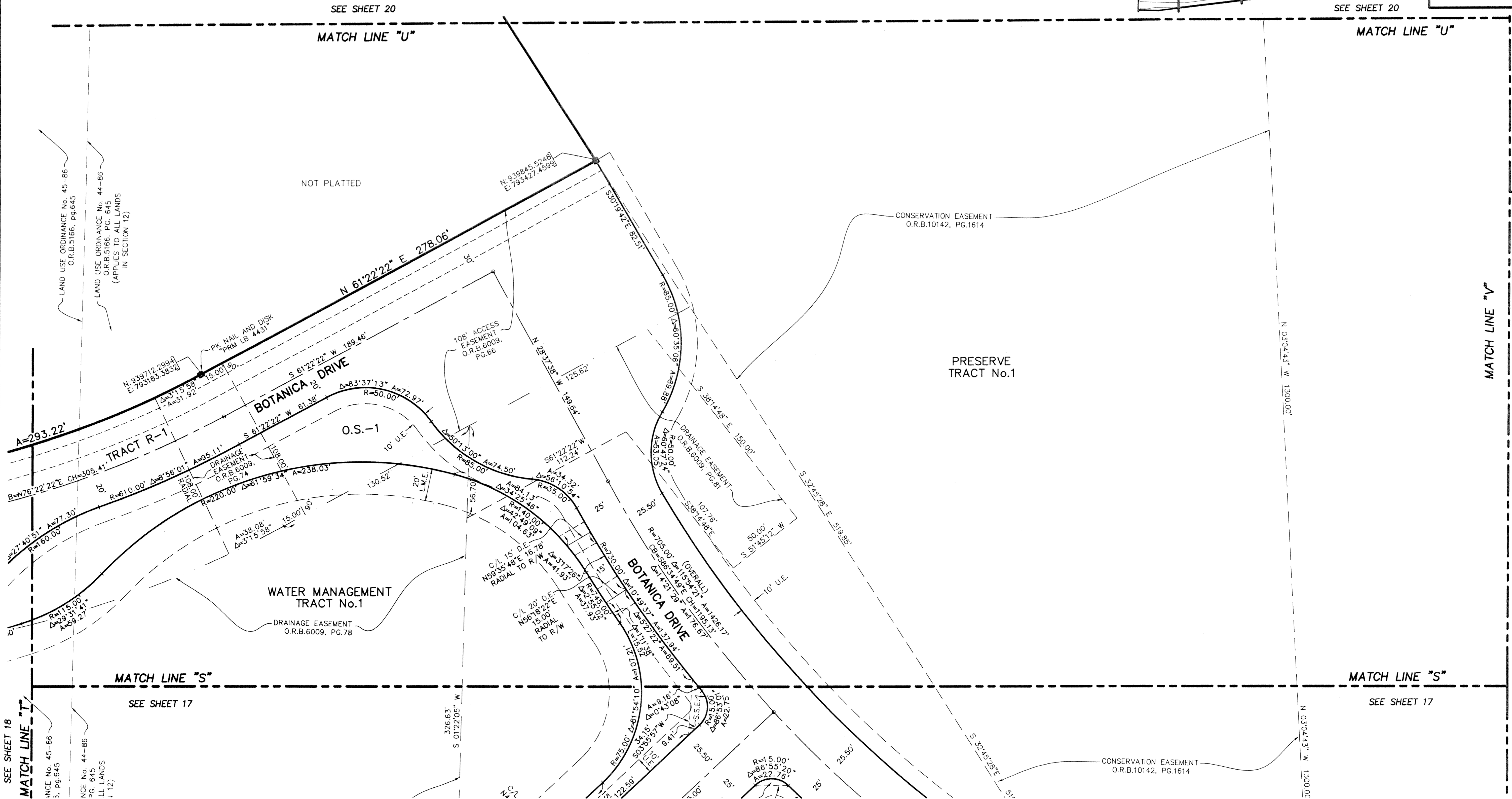
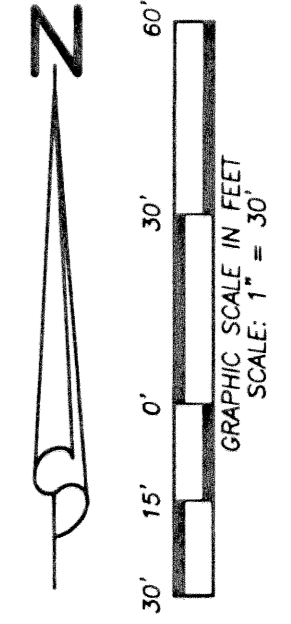
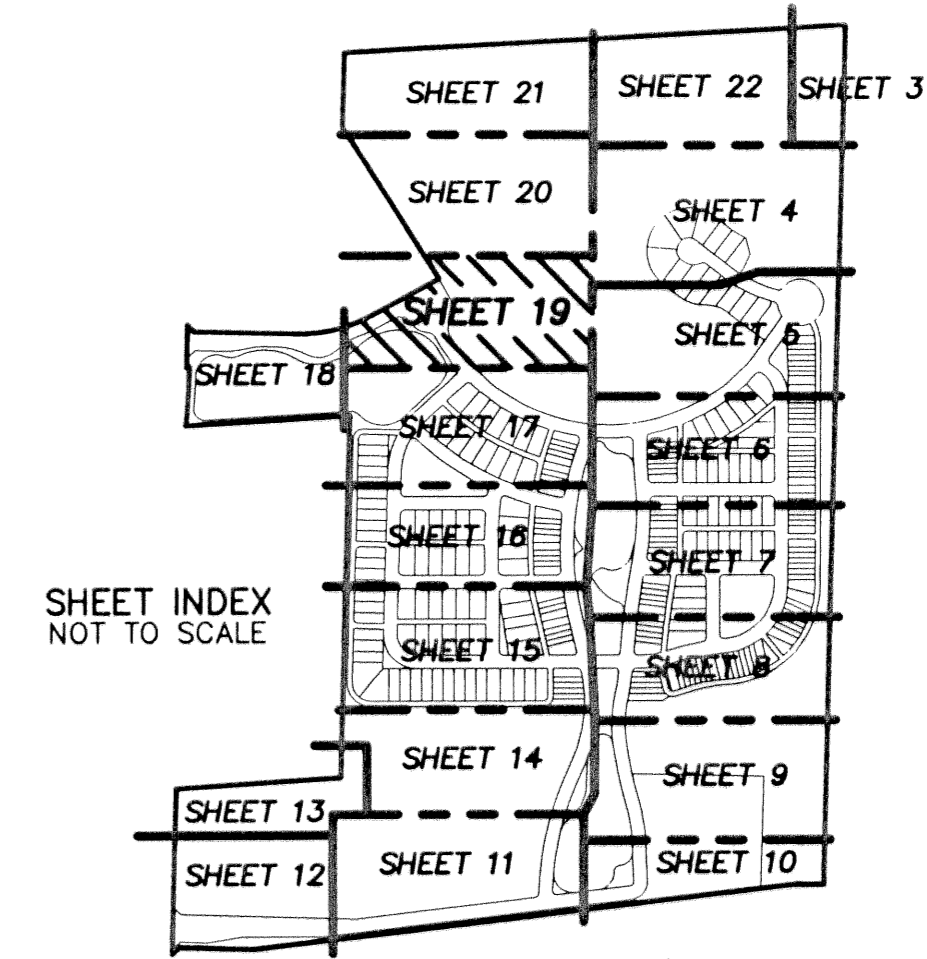


BOTANICA

BEING A PARCEL OF LAND IN SECTION 12 AND 13, TOWNSHIP 41 SOUTH,
RANGE 42 EAST, TOWN OF JUPITER, PALM BEACH COUNTY, FLORIDA.

JANUARY, 2003 SHEET 19 OF 22

46



SEE SHEET 18
MATCH LINE "T"
INCE No. 45-86
3, P. 645
NCE No. 44-86
3, P. 645
LL LANDS
1 1/2

LIDBERG LAND SURVEYING, INC.
675 West Indiantown Road, Suite 200,
Jupiter, Florida 33459 TEL. 561-746-8454
LB4431

CAD	K:\AUTOCAD\98-150\1508-306.DWG		
REF	K:\AUTOCAD\		
FLD	B. D.	FB. 000 PG. 00	JOB 98-150-306
OFF	W. D. J.	000 00	DATE 02-22-02
CKD	W. D. J.	SHEET 19 OF 22	DWG D98-150P