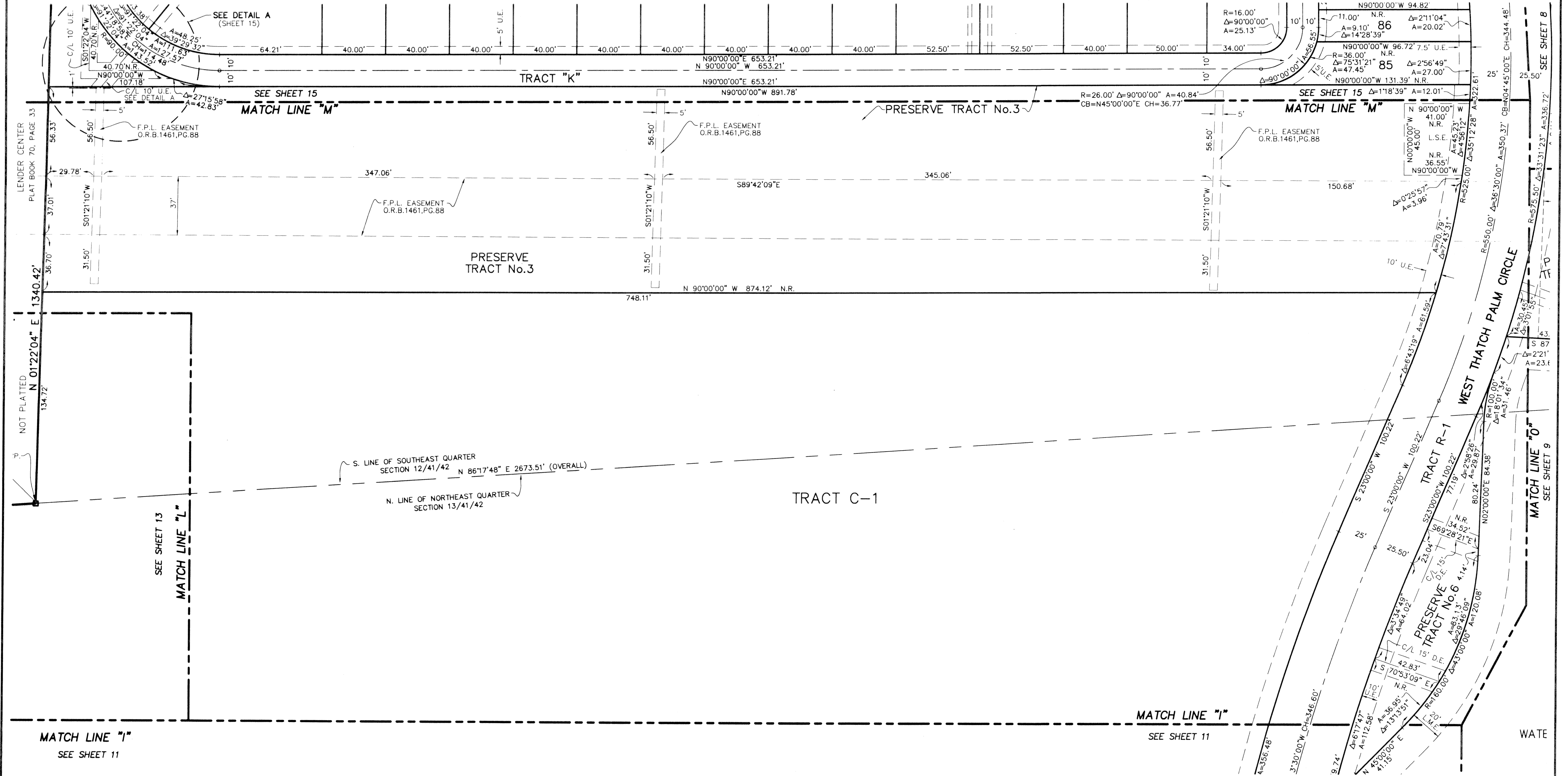
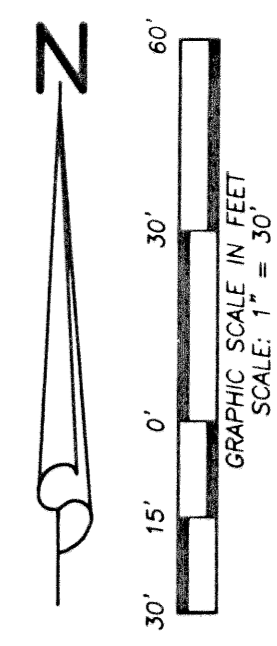
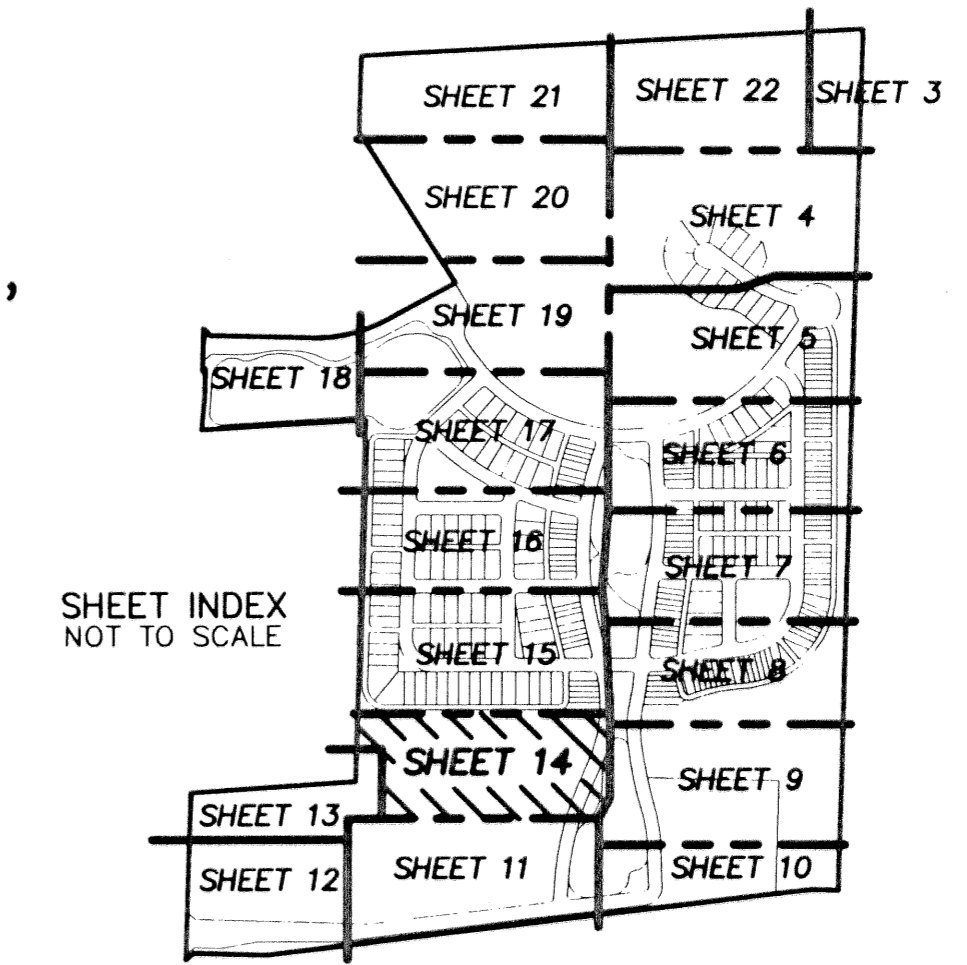


BOTANICA

BEING A PARCEL OF LAND IN SECTION 12 AND 13, TOWNSHIP 41 SOUTH,
RANGE 42 EAST, TOWN OF JUPITER, PALM BEACH COUNTY, FLORIDA.

JANUARY, 2003 SHEET 14 OF 22

41



		CAD K:\AUTOCAD\98-150\1508-306.DWG REF K:\AUTOCAD\	
FLD B.D. OFF W.D.J.	FB. 000 000 000	PG. 00 00 00	JOB 98-150-306 DATE 02-22-02
CKD W.D.J.	SHEET 14 OF 22	DWG D98-150P	

LB4431 675 West Indiantown Road, Suite 200, Jupiter, Florida 33458 TEL. 561-746-8454