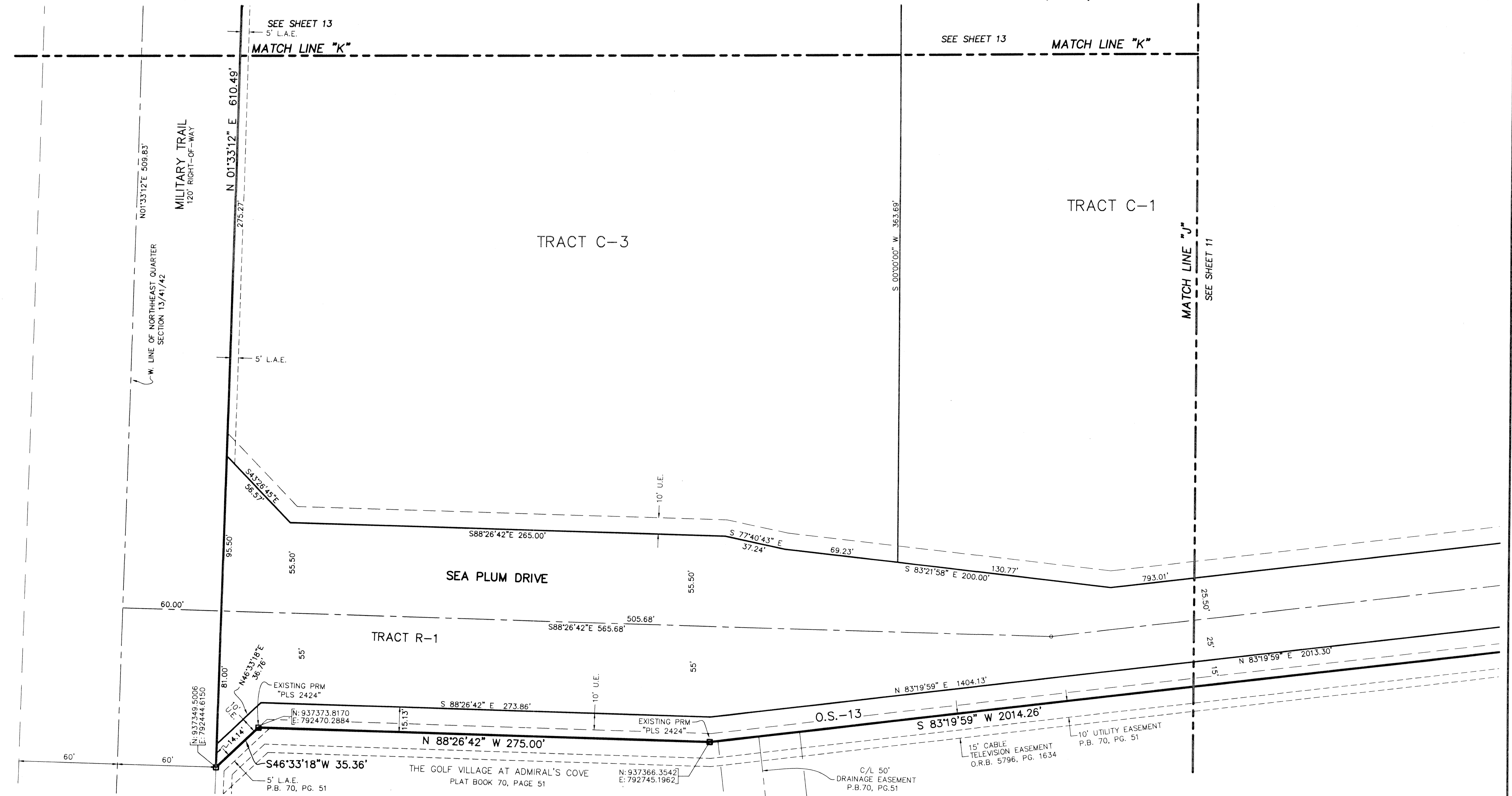
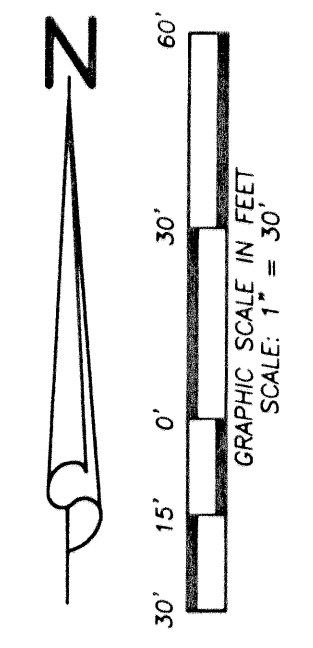
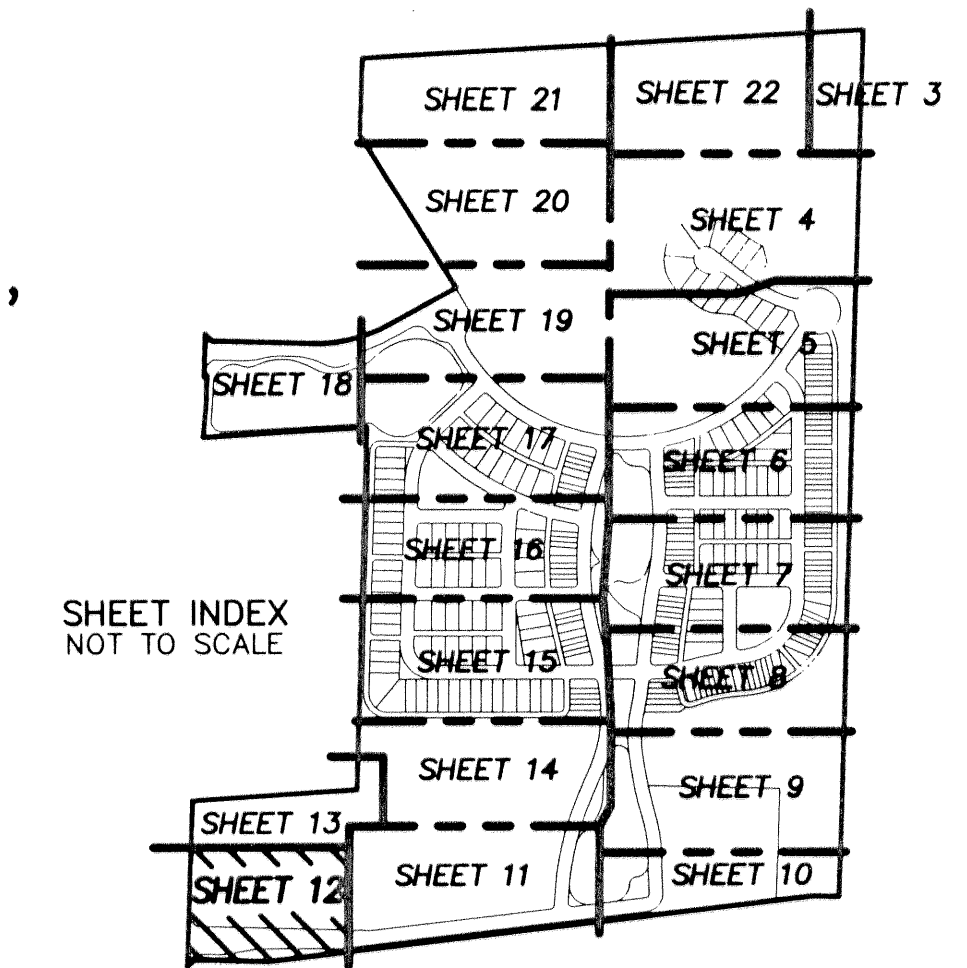


BOTANICA

BEING A PARCEL OF LAND IN SECTION 12 AND 13, TOWNSHIP 41 SOUTH,
RANGE 42 EAST, TOWN OF JUPITER, PALM BEACH COUNTY, FLORIDA.

JANUARY, 2003 SHEET 12 OF 22



LIDBERG LAND SURVEYING, INC.
 675 West Indiantown Road, Suite 200,
 Jupiter, Florida 33458 TEL. 561-746-8454

CAD	K:\AUTOCAD\98-150\1508-306.DWG		
REF	K:\AUTOCAD\		
FLD	B.D.	FB. 000 000 000	PG. 00 00 00
OFF	W.D.J.	000 000 000	JOB 98-150-306 DATE 02-22-02
CKD	W.D.J.	SHEET 12 OF 22	DWG D98-150P