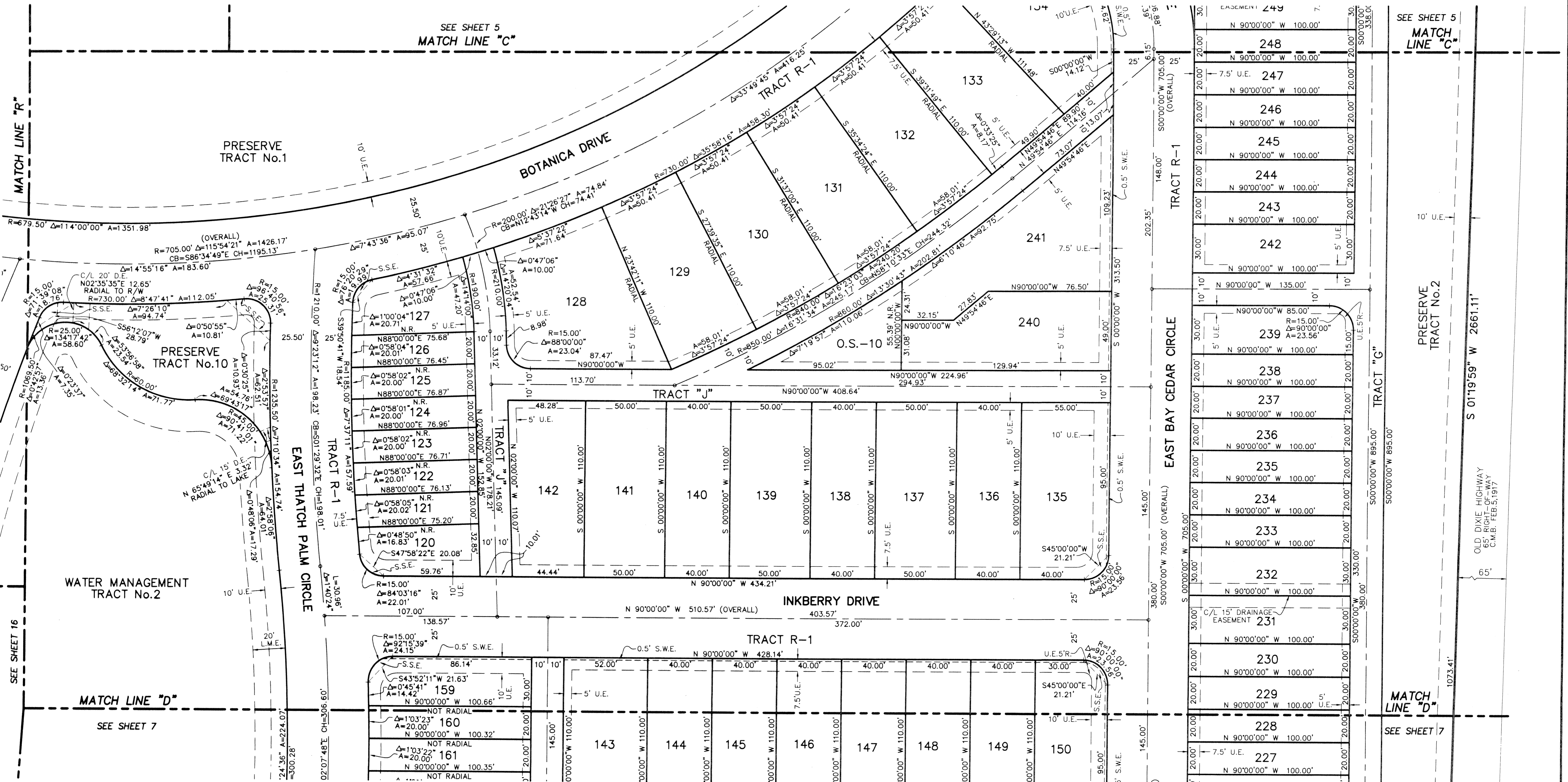
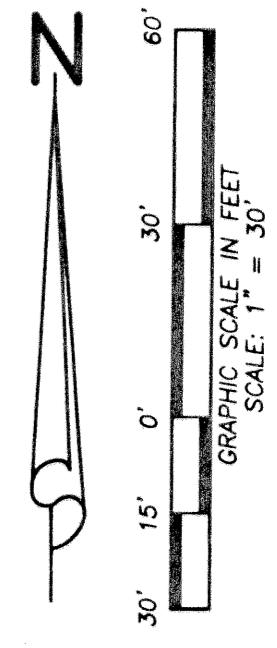
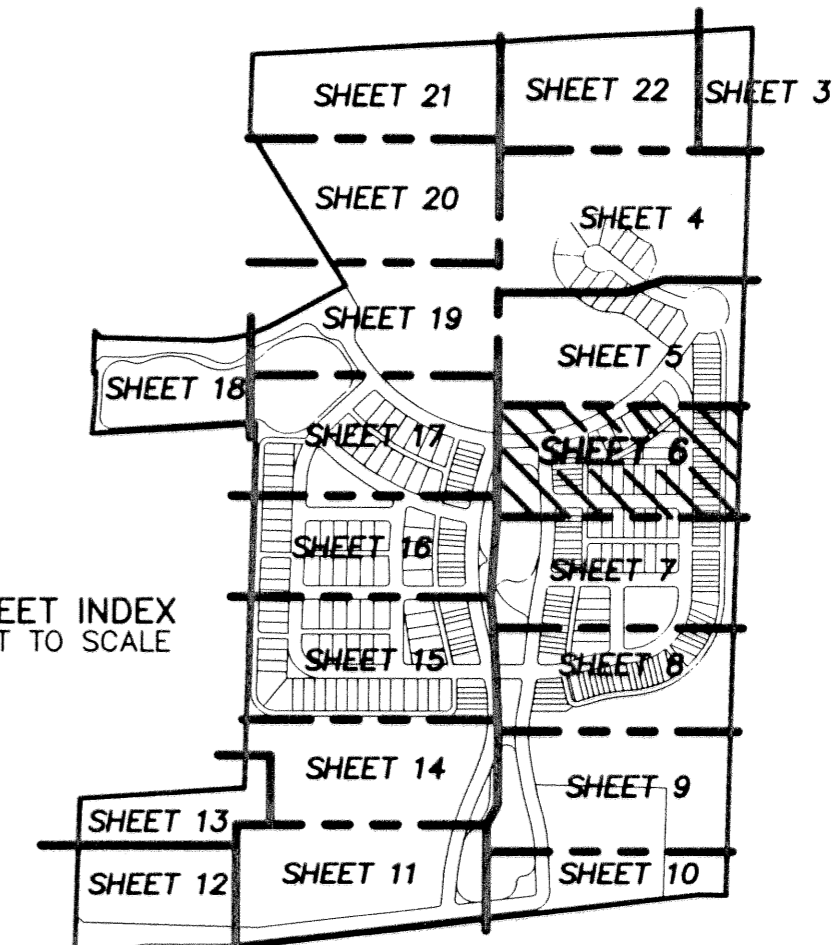


# BOTANICA

BEING A PARCEL OF LAND IN SECTION 12 AND 13, TOWNSHIP 41 SOUTH,  
RANGE 42 EAST, TOWN OF JUPITER, PALM BEACH COUNTY, FLORIDA.

JANUARY, 2003 SHEET 6 OF 22

33



**LIDBERG LAND SURVEYING, INC.**  
675 West Indiantown Road, Suite 200,  
Jupiter, Florida 33458 TEL. 561-746-8454

CAD K:\AUTOCAD\98-150\1508-306.DWG			
REF K:\AUTOCAD\			
FLD	B. D.	FB. 000	PG. 00
OFF	W. D. J.	000	00
CKD	W. D. J.	000	00
SHEET 6 OF 22		JOB 98-150-306	
DATE 02-22-02		DWG D98-150P	