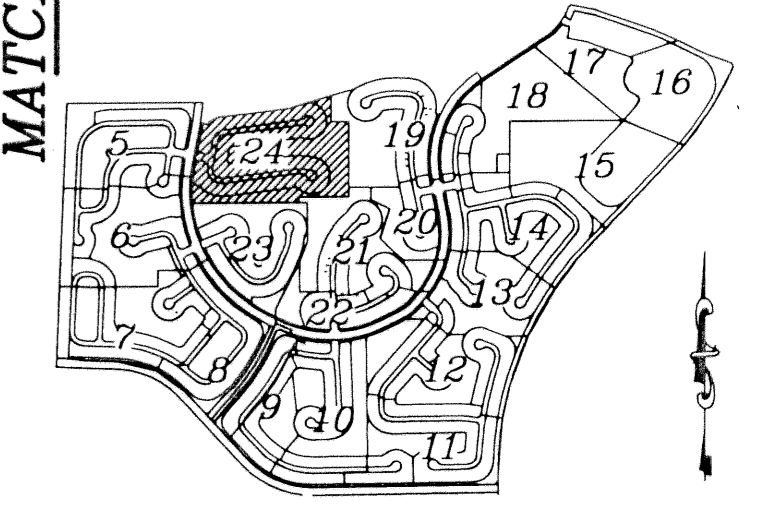


OLYMPIA - PLAT II
BEING A REPLAT OF A PORTION OF BLOCKS 19 AND 20 OF PALM BEACH FARMS COMPANY PLAT No. 3, AS RECORDED IN PLAT BOOK 2, PAGES 45 THROUGH 54 OF THE PUBLIC RECORDS OF PALM BEACH COUNTY FLORIDA. BEING IN PORTIONS OF SECTIONS 17, 18 AND 19, TOWNSHIP 44 SOUTH, RANGE 42 EAST, VILLAGE OF WELLINGTON, PALM BEACH COUNTY, FLORIDA
SHEET 24 OF 24
DECEMBER 2002

OLYMPIA
PLAT I
(PLAT BOOK 93,
PAGES 135-161)

MATCHLINE SEE SHEET 19 OF 24

SHEET INDEX

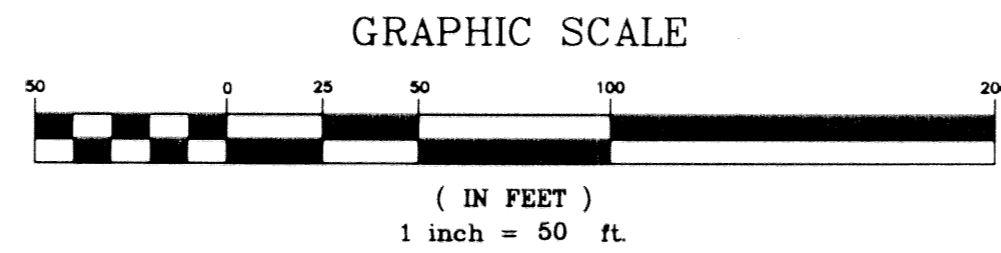
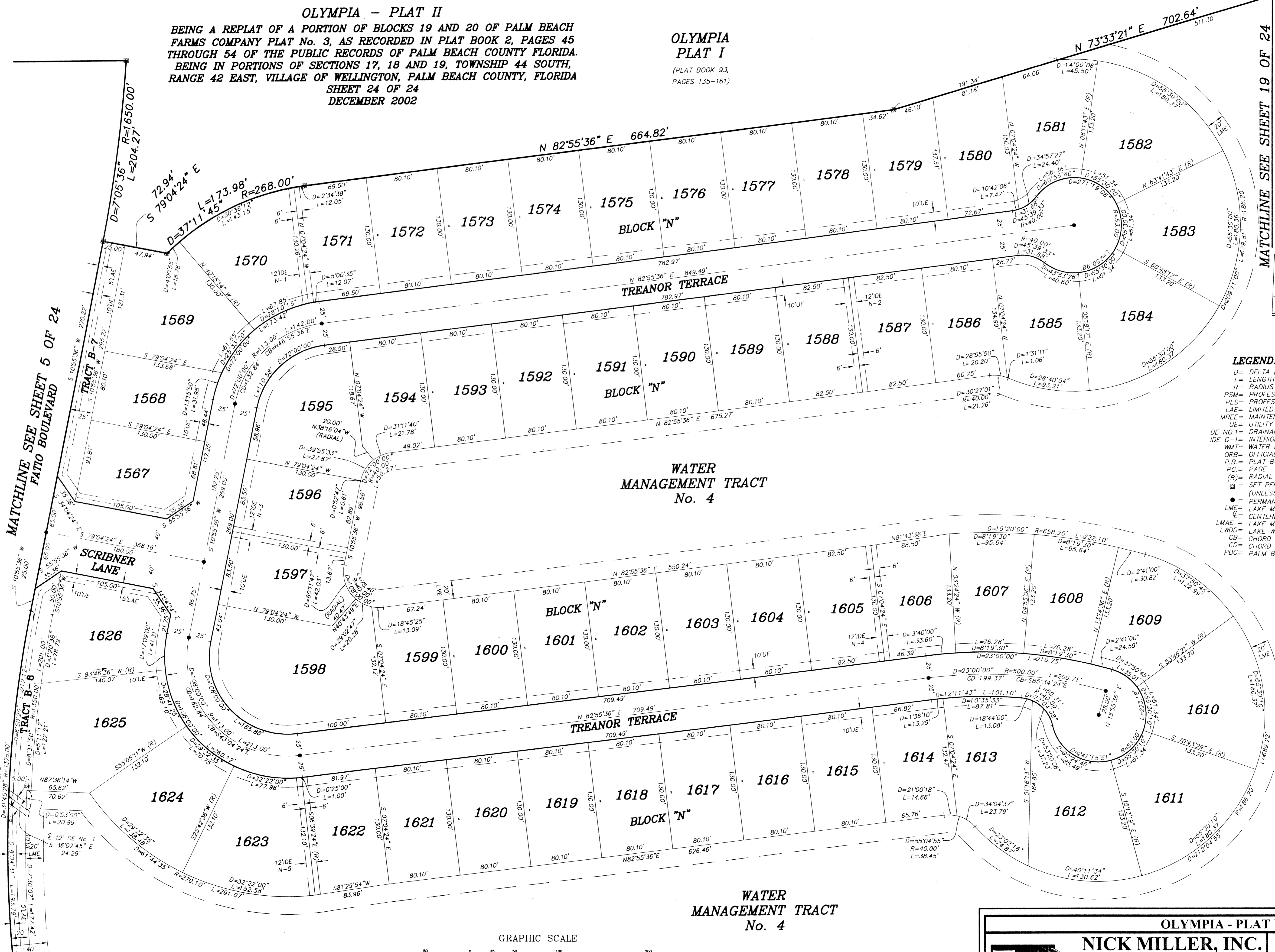


- LEGEND:**
- D= DELTA (CENTRAL ANGLE)
 - L= LENGTH
 - R= RADIUS
 - PSM= PROFESSIONAL SURVEYOR AND MAPPER
 - PLS= PROFESSIONAL LAND SURVEYOR
 - LAE= LIMITED ACCESS EASEMENT
 - MREE= MAINTENANCE ROOF AND EAVES EASEMENT
 - UE= UTILITY EASEMENT
 - DE NO.1= DRAINAGE EASEMENT No. 1
 - IDE G-1= INTERIOR DRAINAGE EASEMENT No. G-1
 - WMT= WATER MANAGEMENT TRACT
 - ORB= OFFICIAL RECORD BOOK
 - P.B.= PLAT BOOK
 - PG.= PAGE
 - (R)= RADIAL
 - ☒ = SET PERMANENT REFERENCE MONUMENT "LB 4318" (UNLESS OTHERWISE NOTED)
 - = PERMANENT CONTROL POINT "LB 4318"
 - LME= LAKE MAINTENANCE EASEMENT
 - ⊕ = CENTERLINE
 - LMAE= LAKE MAINTENANCE ACCESS EASEMENT
 - LWDD= LAKE WORTH DRAINAGE DISTRICT
 - CB= CHORD BEARING
 - CD= CHORD DISTANCE
 - PBC= PALM BEACH COUNTY

MATCHLINE SEE SHEET 5 OF 24
FATIO BOULEVARD

MATCHLINE SEE SHEET 23 OF 24

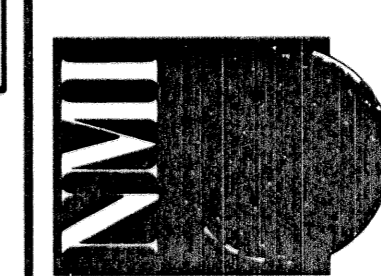
MATCHLINE SEE SHEET 21 OF 24



WATER
MANAGEMENT TRACT
No. 4

MATCHLINE SEE SHEET 23 OF 24

OLYMPIA - PLAT II



NICK MILLER, INC.
Surveying & Mapping Consultants
SUITE 105
2560 RCA BLVD.
PALM BEACH GARDENS, FLORIDA 33410
TEL 561 627-5200 FAX 561 627-0983
D.B.P.R. LICENSED BUSINESS No. 4318

SHEET NO.
24

SCALE: 1" = 50'
DATE: DECEMBER 2002
JOB NO. 1008.044
FILE: PHASE II