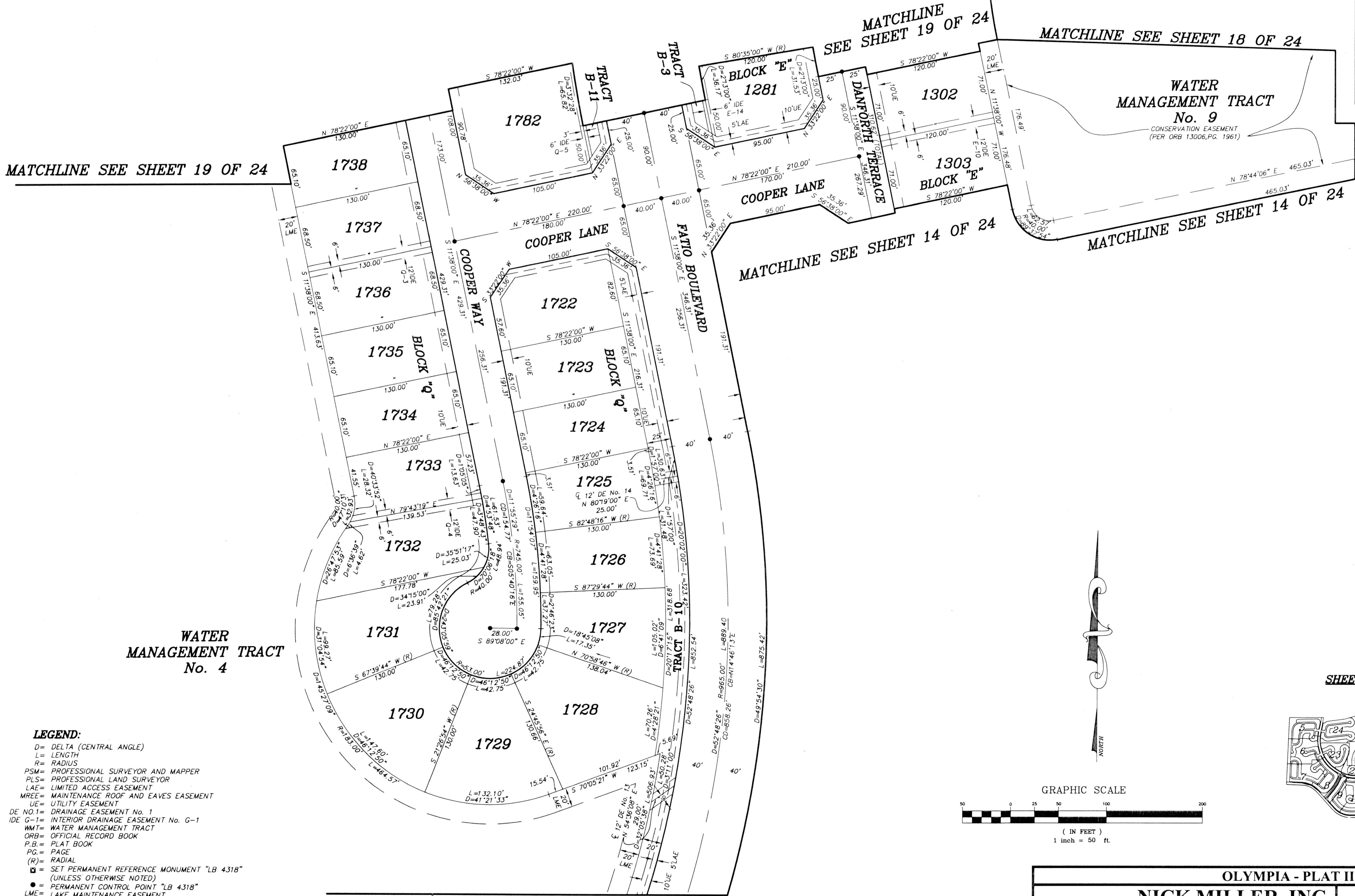


OLYMPIA - PLAT II
BEING A REPLAT OF A PORTION OF BLOCKS 19 AND 20 OF PALM BEACH
FARMS COMPANY PLAT No. 3, AS RECORDED IN PLAT BOOK 2, PAGES 45
THROUGH 54 OF THE PUBLIC RECORDS OF PALM BEACH COUNTY FLORIDA.
BEING IN PORTIONS OF SECTIONS 17, 18 AND 19, TOWNSHIP 44 SOUTH,
RANGE 42 EAST, VILLAGE OF WELLINGTON, PALM BEACH COUNTY, FLORIDA
SHEET 20 OF 24
DECEMBER 2002



MATCHLINE SEE SHEET 19 OF 24

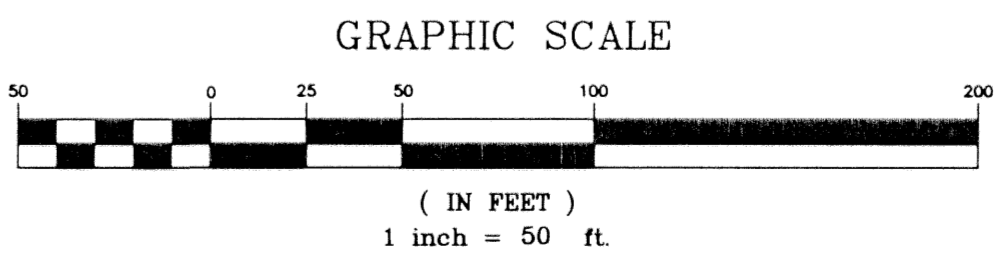
MATCHLINE SEE SHEET 19 OF 24

MATCHLINE SEE SHEET 18 OF 24

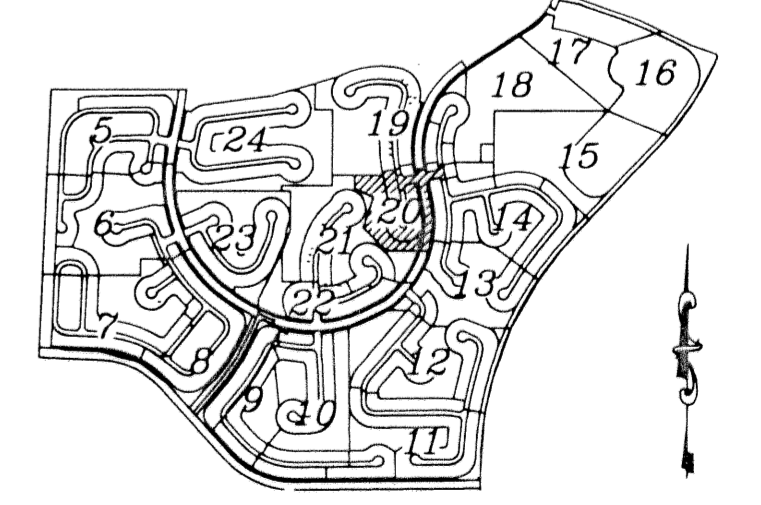
MATCHLINE SEE SHEET 14 OF 24

MATCHLINE SEE SHEET 14 OF 24

WATER
MANAGEMENT TRACT
No. 4



SHEET INDEX



- LEGEND:**
- D= DELTA (CENTRAL ANGLE)
 - L= LENGTH
 - R= RADIUS
 - PSM= PROFESSIONAL SURVEYOR AND MAPPER
 - PLS= PROFESSIONAL LAND SURVEYOR
 - LAE= LIMITED ACCESS EASEMENT
 - MREE= MAINTENANCE ROOF AND EAVES EASEMENT
 - UE= UTILITY EASEMENT
 - DE NO.1= DRAINAGE EASEMENT No. 1
 - IDE G-1= INTERIOR DRAINAGE EASEMENT No. G-1
 - WMT= WATER MANAGEMENT TRACT
 - ORB= OFFICIAL RECORD BOOK
 - P.B.= PLAT BOOK
 - P.G.= PAGE
 - (R)= RADIAL
 - = SET PERMANENT REFERENCE MONUMENT "LB 4318" (UNLESS OTHERWISE NOTED)
 - = PERMANENT CONTROL POINT "LB 4318"
 - LM= LAKE MAINTENANCE EASEMENT
 - CL= CENTERLINE
 - LMAE= LAKE MAINTENANCE ACCESS EASEMENT
 - LWDD= LAKE WORTH DRAINAGE DISTRICT
 - CB= CHORD BEARING
 - CD= CHORD DISTANCE
 - PBC= PALM BEACH COUNTY

MATCHLINE SEE SHEET 21 OF 24

OLYMPIA - PLAT II	
	NICK MILLER, INC. Surveying & Mapping Consultants
	SHEET NO. 20
	SCALE: 1" = 50' DATE: DECEMBER 2002 JOB NO. 1008.044 FILE: PHASE II
	SUIE 105 2560 RCA BLVD. PALM BEACH GARDENS, FLORIDA 33410 TEL 561 627-5200 FAX 561 627-0983 D.B.P.R. LICENSED BUSINESS No. 4318