

# PALM BEACH THOROUGHbred TRAINING FARM

A PLAT OF A PORTION OF SECTIONS 17, 18, 19 AND 20, TOWNSHIP 45 SOUTH, RANGE 42 EAST AND ALSO BEING A REPLAT OF ALL OF TRACTS 56 THROUGH 69, 72 THROUGH 85, 88 THROUGH 101 AND 104 THROUGH 117, BLOCK 46, ALL OF TRACTS 2 THROUGH 15 AND 18 THROUGH 31, BLOCK 50, A PORTION OF TRACTS 55, 70, 71, 86, 87, 102, 103 AND 118, BLOCK 46, A PORTION OF TRACTS 1, 16, 17 AND 32, BLOCK 50 AND A PORTION OF THE ROAD, DYKE AND DITCH RESERVATIONS, (HEREINAFTER REFERRED TO AS RIGHT-OF-WAY) LYING IN AND BORDERING BLOCKS 46 AND 50, ALL OF THE PALM BEACH FARMS COMPANY PLAT NO. 3, ACCORDING TO THE PLAT THEREOF AS RECORDED IN PLAT BOOK 2, PAGES 45 THROUGH 54 OF THE PUBLIC RECORDS OF PALM BEACH COUNTY, FLORIDA

PALM BEACH COUNTY, FLORIDA

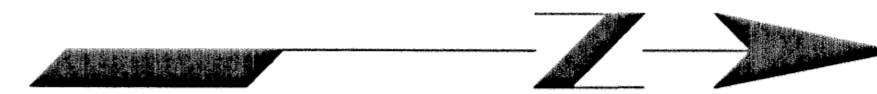
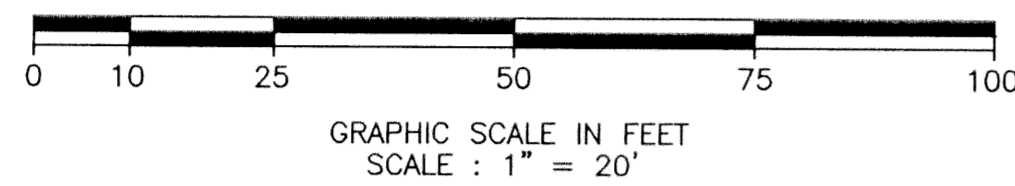
THIS INSTRUMENT WAS PREPARED BY :  
 FREDERICK M. LEHMAN IN THE OFFICES OF  
 JOHN A. GRANT, JR., INC.  
 CONSULTING ENGINEERS AND LAND SURVEYORS  
 3333 NORTH FEDERAL HIGHWAY  
 BOCA RATON, FLORIDA 33431  
 PHONE NUMBER : (561) 395-3333  
 FAX NUMBER : (561) 395-3315  
 LICENSED BUSINESS NO. : LB-50

JOHN A. GRANT, JR., INC.

CONSULTING ENGINEERS AND LAND SURVEYORS

BOCA RATON, FLORIDA

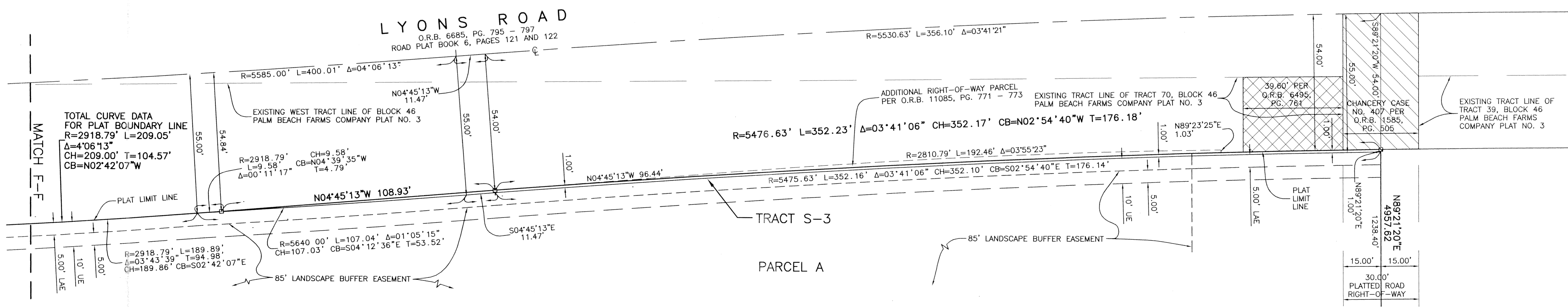
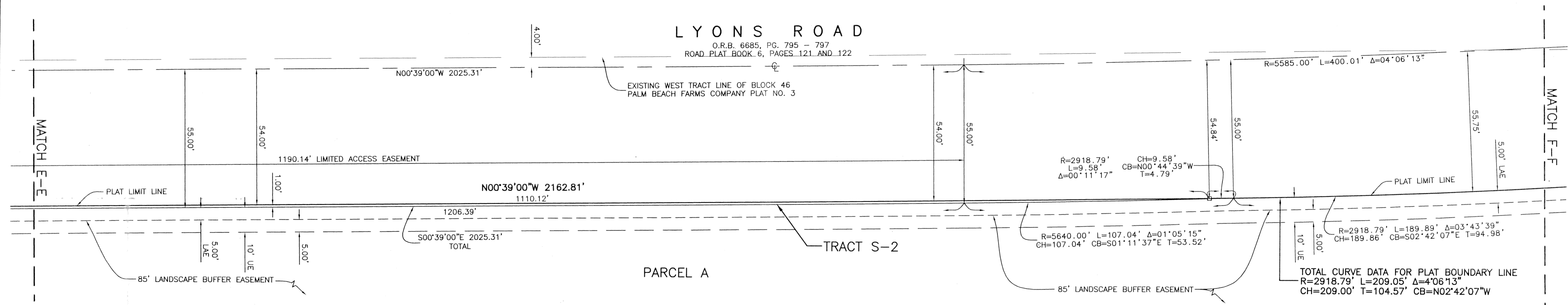
SHEET 7 OF 8  
 AUGUST 2001



NOTE :  
 SEE SHEET 3 OF 8 FOR PLAT NOTES.  
 SEE SHEET 3 OF 8 FOR LEGEND.

STATE OF FLORIDA  
 COUNTY OF PALM BEACH  
 THIS PLAT WAS FILED FOR  
 RECORD AT \_\_\_\_\_ .M.  
 THIS \_\_\_\_\_ DAY OF  
 \_\_\_\_\_ A.D. 2002 AND DULY  
 RECORDED IN PLAT BOOK  
 \_\_\_\_\_ ON PAGES \_\_\_\_\_  
 AND \_\_\_\_\_  
 DOROTHY H. WILKEN  
 CLERK CIRCUIT COURT  
 BY : \_\_\_\_\_  
 DEPUTY CLERK

170



SUBDIVISION: PB THOROUGHbred TRAINING FARM  
 BOOK: 96  
 PAGE: 170  
 FLOOD ZONE: B  
 QUAD: 4A  
 ZONING: LQ  
 SE  
 TAZ: 1030  
 PUD NAME:  
 ZIP CODE: 33437

REVISED DATE : JANUARY 16, 2002  
 REVISED DATE : JANUARY 9, 2002  
 DATE : SEPTEMBER 21, 2001  
 JOB NUMBER : JG-100-8600  
 FILE NAME : \\JAG7\CADD\JOB8600\RECORD PLAT\RECORD PLAT.DWG  
 LUR