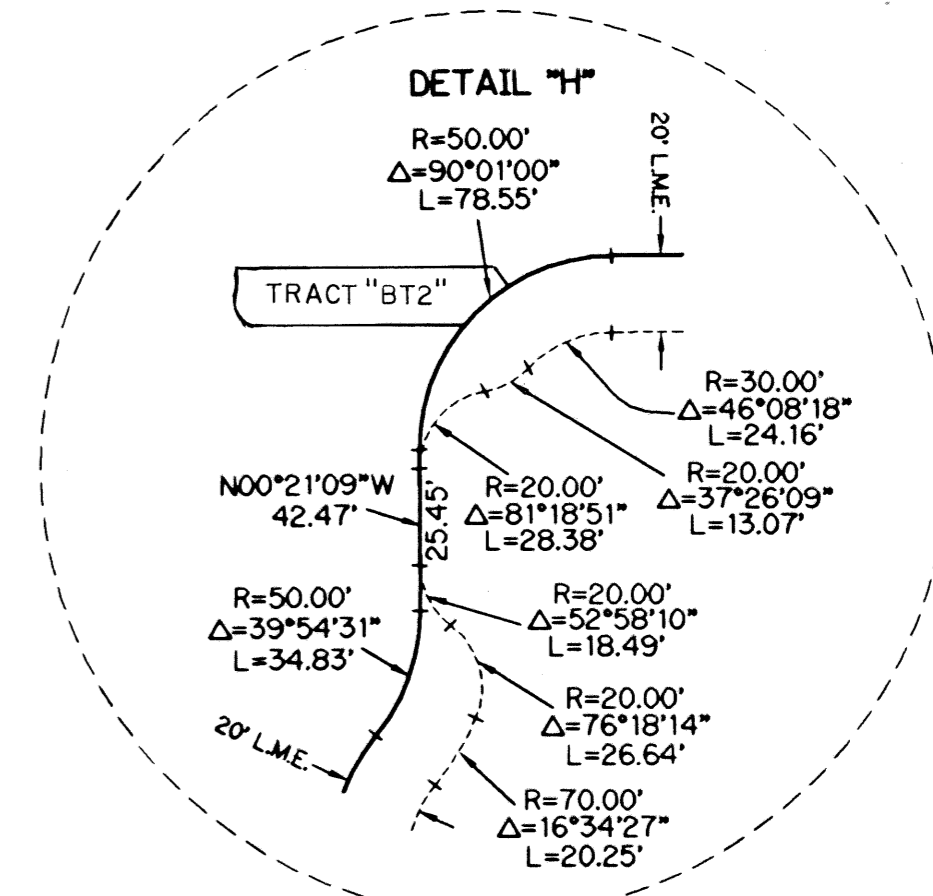
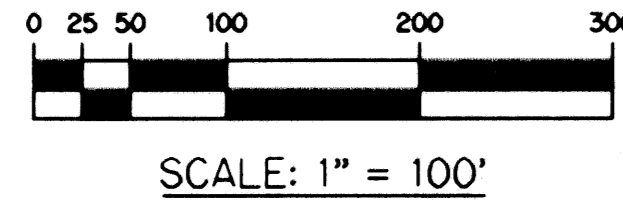


# COLONY CLUB APARTMENTS, P.U.D.

BEING A REPLAT OF A PORTION OF TRACTS 4, 5 AND 7, AMENDED PLAT OF SECTION 12, TOWNSHIP 45 SOUTH, RANGE 42 EAST, MARY A. LYMAN ET AL ACCORDING TO THE PLAT THEREOF RECORDED IN PLAT BOOK 9, PAGE 74 OF THE PUBLIC RECORDS OF, PALM BEACH COUNTY, FLORIDA.

SHEET 2 OF 2 MAY, 2002

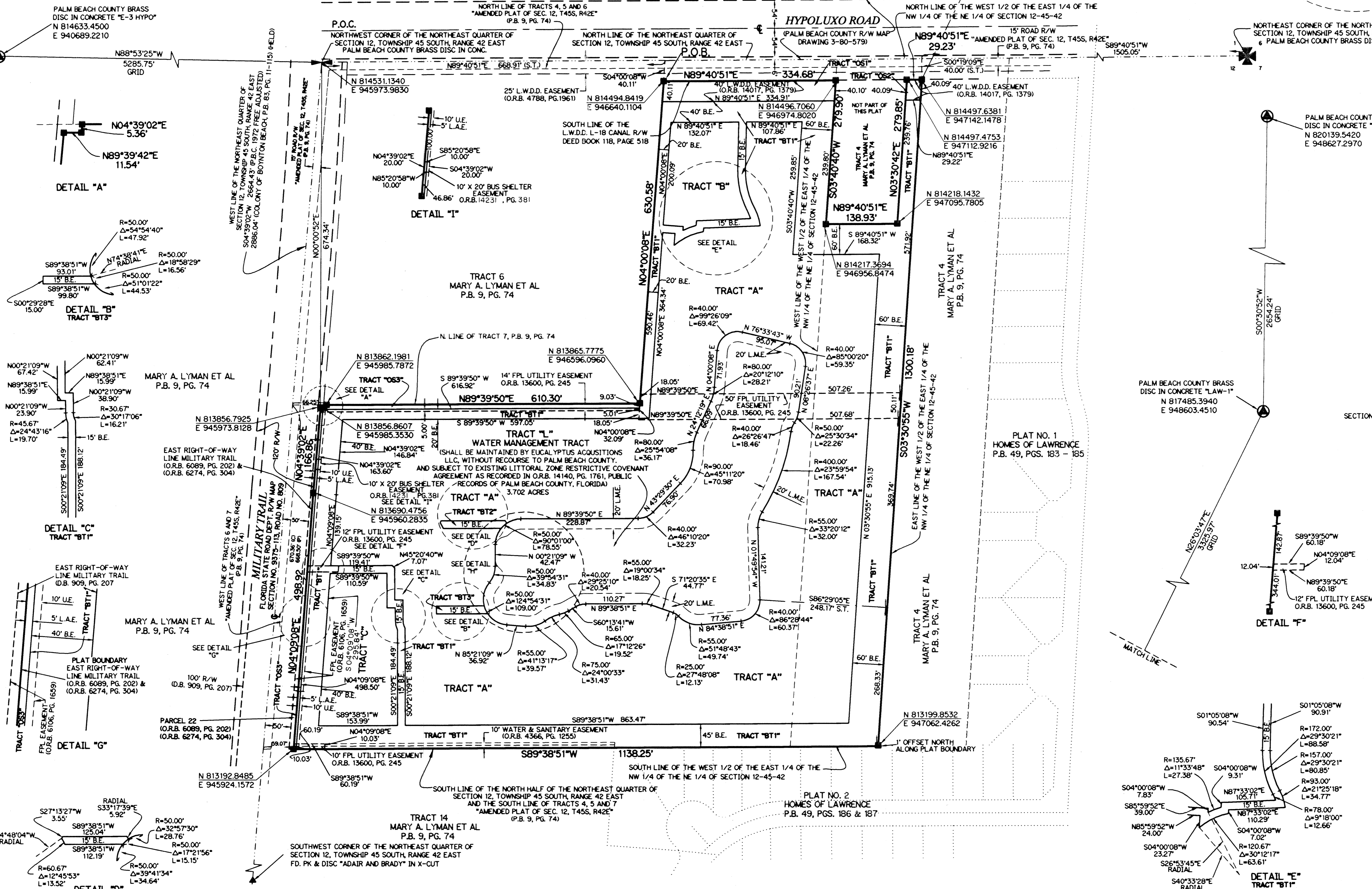
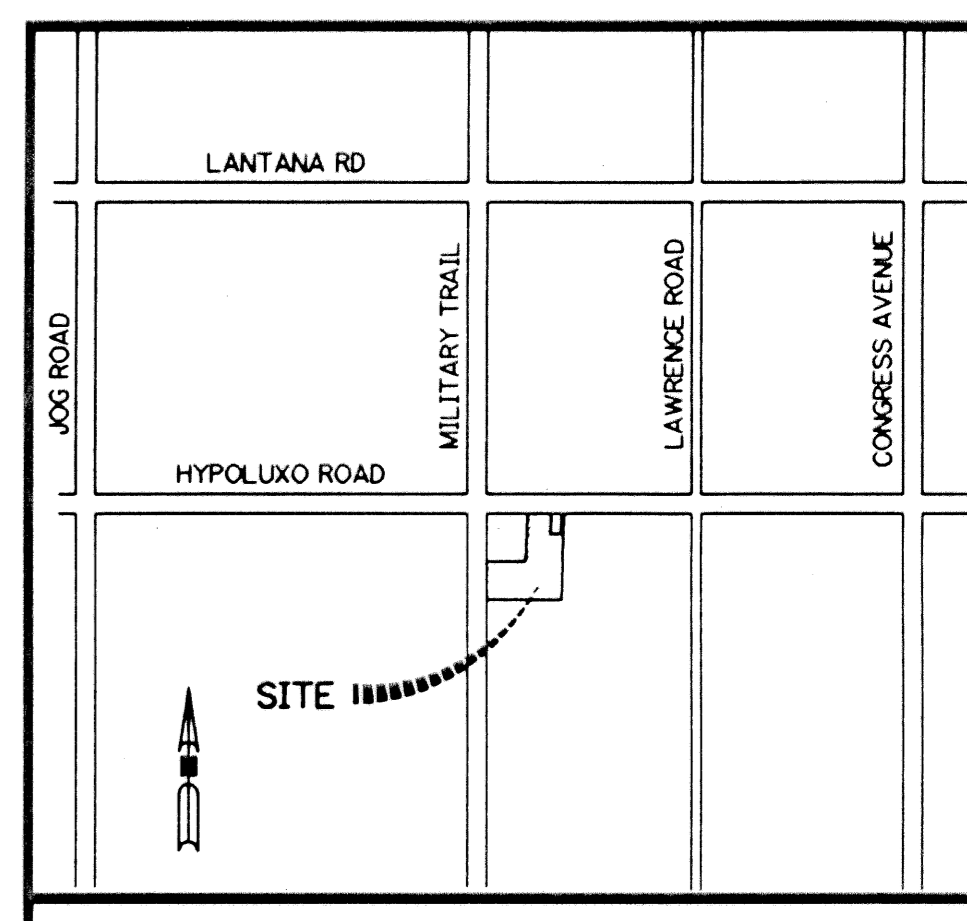


- LEGEND:**
- - SET PERMANENT REFERENCE MONUMENT, L.B. #6674
  - - FOUND PERMANENT REFERENCE MONUMENT, L.B. #6674
  - ⊙ - CENTERLINE
  - D.B. - DEED BOOK
  - D.E. - DRAINAGE EASEMENT
  - L - ARC LENGTH
  - L.W.D.D. - LAKE WORTH DRAINAGE DISTRICT
  - N.R. - NOT RADIAL
  - N.T.S. - NOT TO SCALE
  - L.A.E. - LIMITED ACCESS EASEMENT
  - O.R.B. - OFFICIAL RECORD BOOK
  - P.B. - PLAT BOOK
  - P.S. - PAGES
  - P.S.M. - PROFESSIONAL SURVEYOR AND MAPPER
  - R - RADIUS
  - RAD. - RADIAL
  - R/W - RIGHT-OF-WAY
  - S.T. - SURVEY TIE
  - U.E. - UTILITY EASEMENT
  - P.B.F.C. - PALM BEACH FARMS COMPANY PLAT NO. 1 (P.B. 2, PGS. 26 - 28)
  - B.E. - BUFFER EASEMENT
  - L.M.E. - LAKE MAINTENANCE EASEMENT
  - GRD. - GROUND
  - S. - SECTION 12, TOWNSHIP 45 SOUTH, RANGE 42 EAST
  - P.O.C. - POINT OF COMMENCEMENT
  - P.O.B. - POINT OF BEGINNING

**NOTE:**

COORDINATES SHOWN ARE GRID COORDINATES  
 DATUM = NAD 83 (1988 ADJUSTMENT)  
 ZONE = FLORIDA EAST ZONE  
 LINEAR UNIT = U.S. SURVEY FEET  
 COORDINATE SYSTEM = 1983 STATE PLANE TRANSVERSE MERCATOR PROJECTION  
 ALL DISTANCES ARE GROUND UNLESS OTHERWISE NOTED  
 SCALE FACTOR = 1.0000378  
 PLAT BEARINGS = GRID BEARING  
 NO ROTATION

THIS INSTRUMENT PREPARED BY  
 WILBUR F. DIVINE, P.S.M. 4190, STATE OF FLORIDA  
 LAWSON, NOBLE AND WEBB, INC., LB-6674  
 ENGINEERS PLANNERS SURVEYORS  
 420 COLUMBIA DRIVE, SUITE 110  
 WEST PALM BEACH, FLORIDA



SUBDIVISION COLONY CLUB APARTMENTS  
 BOOK 90 FLOOD MAP # 190 B  
 FLOOD ZONE B ZONING PUD  
 QUAD # 34  
 SE  
 TAZ 415  
 PUD NAME COLONY CLUB APARTMENTS