

# COURTYARD GARDENS

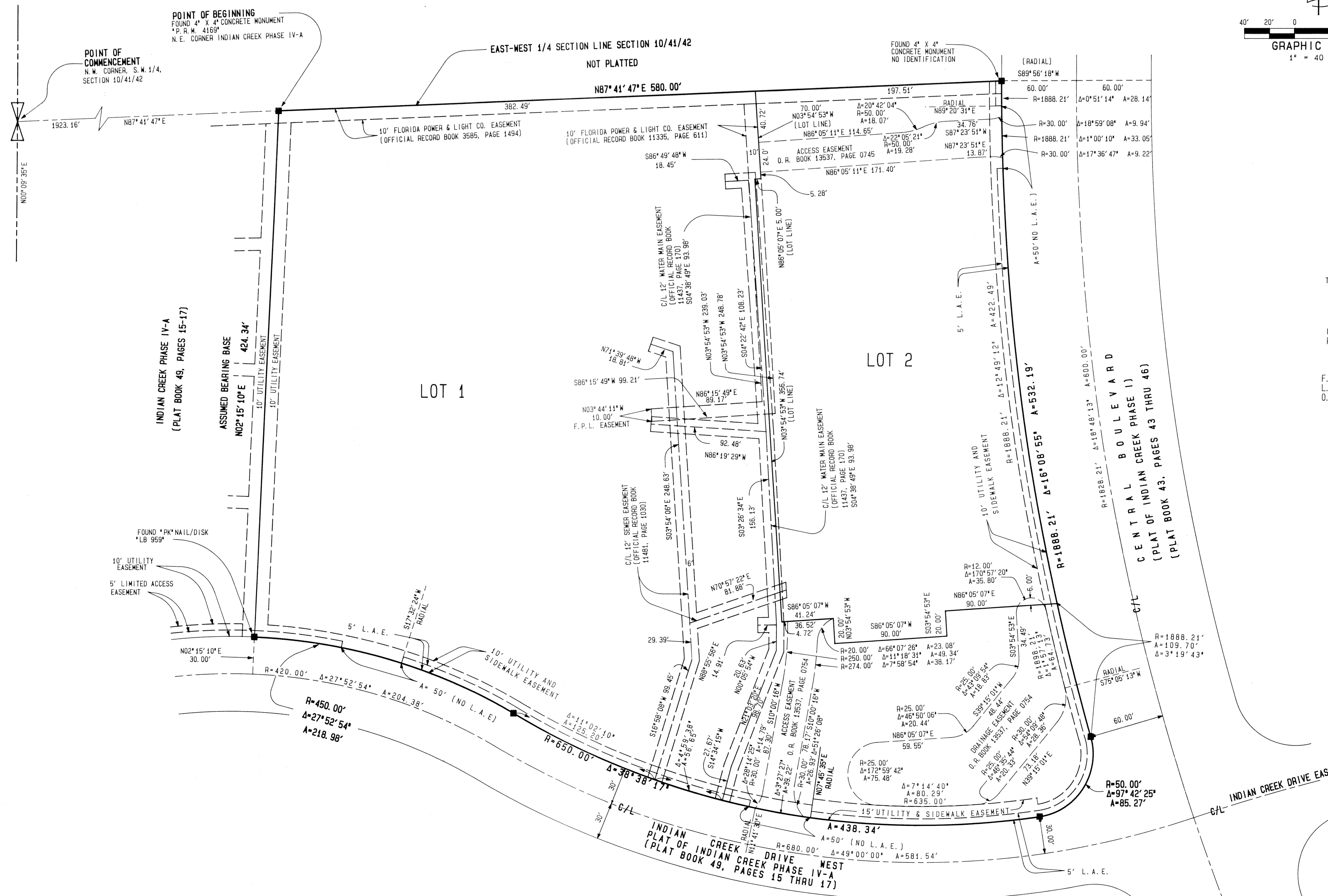
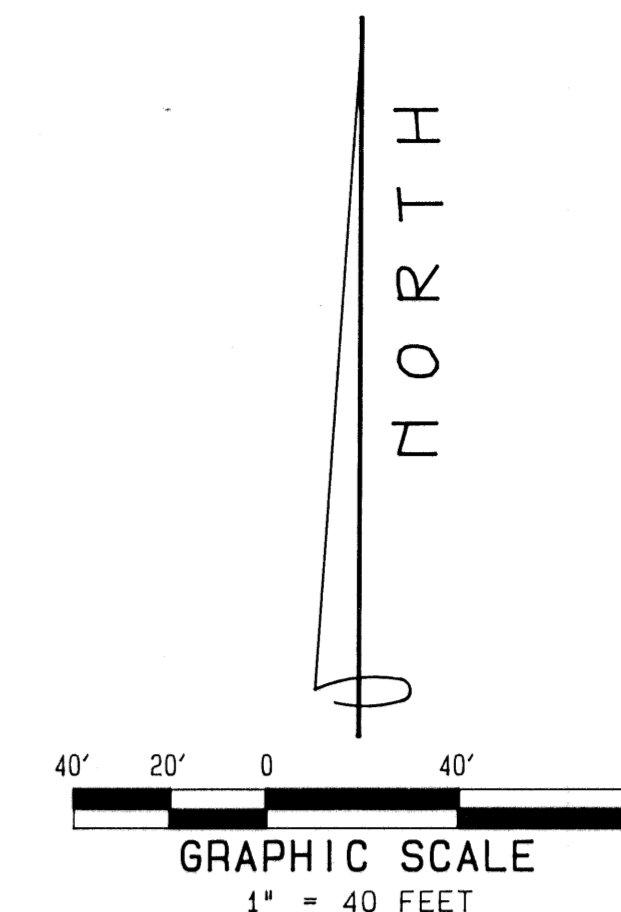
LYING IN SECTION 10, TOWNSHIP 41 SOUTH, RANGE 42 EAST,  
TOWN OF JUPITER, COUNTY OF PALM BEACH, FLORIDA

MARCH 2002

SHEET 2 OF 2

108

STATE OF FLORIDA )  
COUNTY OF PALM BEACH ) SS  
THIS PLAT WAS FILED FOR RECORD AT  
THIS DAY OF  
2002, AND DULY  
RECORDED IN PLAT BOOK THROUGH  
PAGES  
DOROTHY H. WILKEN  
CLERK OF THE CIRCUIT COURT  
BY: \_\_\_\_\_  
DEPUTY CLERK



**ACREAGE TABLE**

LOT 1 = 5.47 ACRES
LOT 2 = 2.02 ACRES
TOTAL LOTS 1 AND 2 = 7.49 ACRES

- LEGEND:**
- C/L - CENTERLINE
  - R/W - RIGHT OF WAY
  - Δ - CENTRAL ANGLE
  - R - RADIUS
  - A - ARC LENGTH
  - F.P.L. - FLORIDA POWER & LIGHT CO.
  - L.A.E. - LIMITED ACCESS EASEMENT
  - O.R.B. - OFFICIAL RECORD BOOK

THIS INSTRUMENT WAS PREPARED BY RICHARD A. MIXON,  
IN AND FOR THE OFFICE OF MIXON LAND SURVEYING, INC.  
311 WEST INDIANTOWN ROAD, SUITE 3, JUPITER, FLORIDA 33458

**MIXON LAND SURVEYING, INC.**  
311 WEST INDIANTOWN ROAD, SUITE 3  
JUPITER, FLORIDA 33458  
(561) 747-6046  
CERTIFICATE NO. LB 4199

PLAT OF  
**COURTYARD GARDENS**