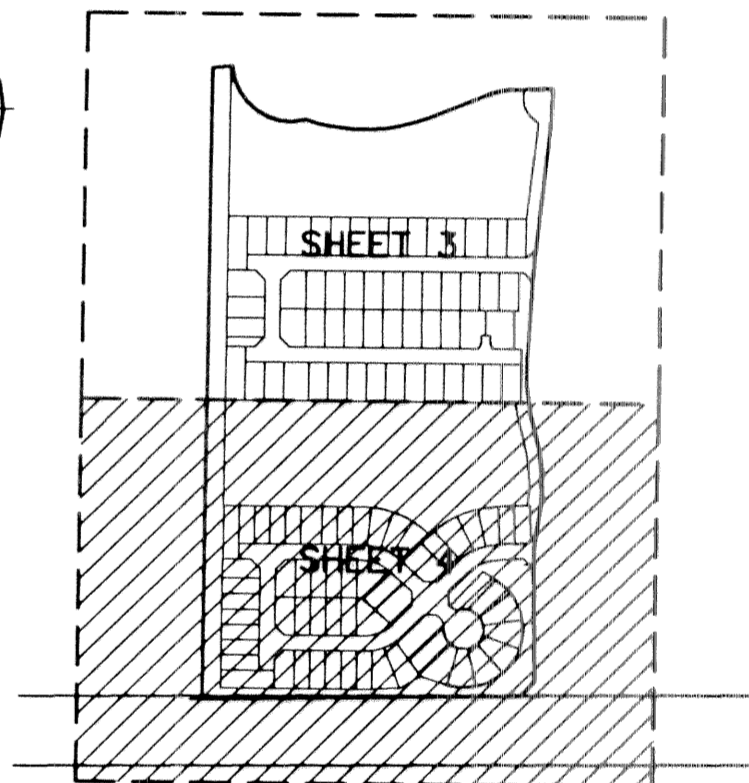
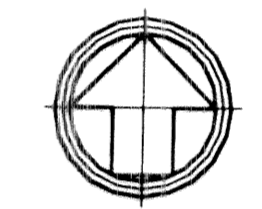
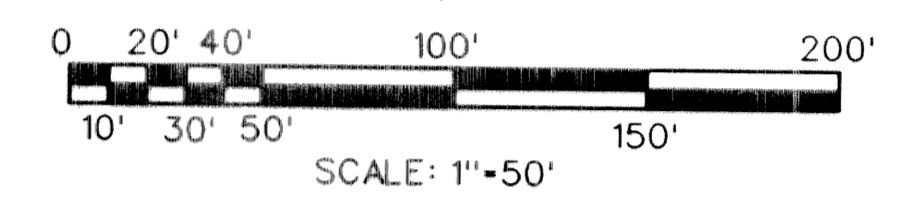
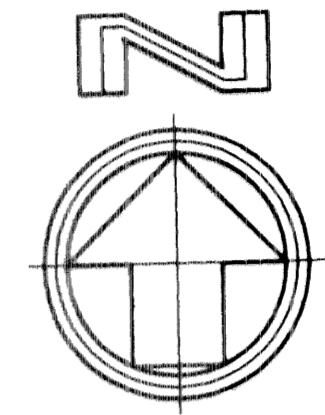
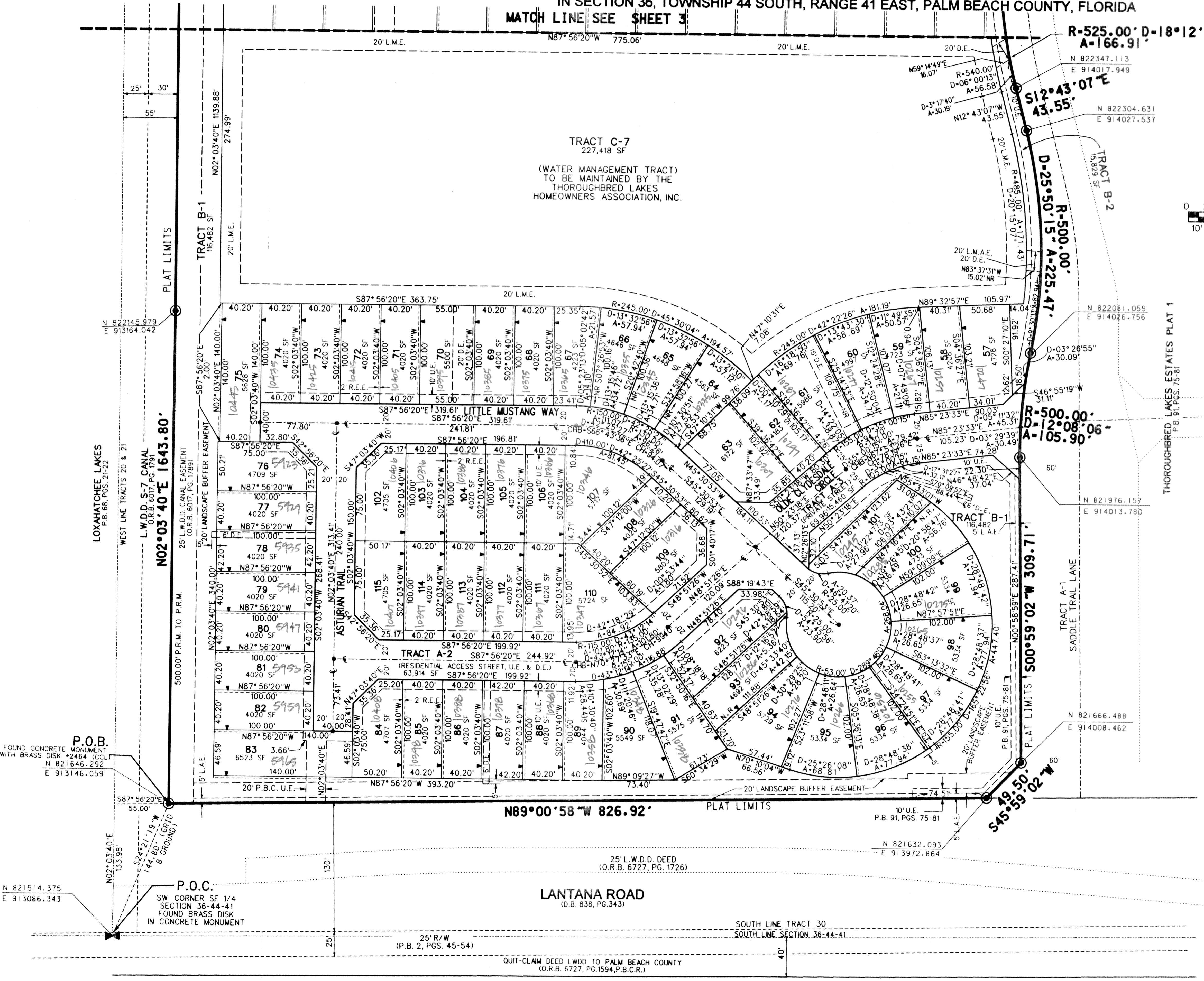


THOROUGHbred LAKE P.U.D.  
**THOROUGHbred LAKE ESTATES PLAT 2**  
 A REPLAT OF TRACT B-3 "THOROUGHbred LAKES ESTATES PLAT 1", (P.B. 91, PGS.75-81,P.B.C.R.)  
 AND A REPLAT OF A PORTION OF BLOCK 35, "PALM BEACH FARMS CO. PLAT NO. 3"  
 (P.B.2, PGS.45-54, P.B.C.R.) AND THE RIGHTS-OF-WAY INCLUDED THEREIN AS ABANDONED,  
 IN SECTION 36, TOWNSHIP 44 SOUTH, RANGE 41 EAST, PALM BEACH COUNTY, FLORIDA  
**MATCH LINE SEE SHEET 3**



KEY MAP  
 NOT TO SCALE

- LEGEND:**
- SET PERMANENT REFERENCE MONUMENT (P.R.M.) • LB2936 UNLESS OTHERWISE NOTED
  - PERMANENT CONTROL POINT (P.C.P.)
  - ◀ INDICATOR OF ZERO LOT SIDE
  - CENTERLINE
  - ARC LENGTH
  - Δ DELTA (CENTRAL ANGLE)
  - D DRAINAGE EASEMENT
  - L.A.E. LIMITED ACCESS EASEMENT
  - L.M.A.E. LAKE MAINTENANCE ACCESS EASEMENT
  - L.M.E. LAKE MAINTENANCE EASEMENT
  - L.S.E. LIFT STATION EASEMENT
  - L.W.D.D. LAKE WORTH DRAINAGE DISTRICT
  - N.R. NON-RADIAL
  - O.R.B. OFFICIAL RECORDS BOOK
  - PG. PAGE
  - P.B. PLAT BOOK
  - P.B.C. PALM BEACH COUNTY
  - P.B.C.R. PALM BEACH COUNTY RECORDS
  - P.O.B. POINT OF BEGINNING
  - P.O.C. POINT OF COMMENCEMENT
  - P.U.D. PLANNED UNIT DEVELOPMENT
  - R RADIUS
  - R.E.E. ROOF ENCROACHMENT EASEMENT
  - R/W RIGHT-OF-WAY
  - SF SQUARE FEET
  - U.E. UTILITY EASEMENT
  - CH. CHORD
  - CHB CHORD BEARING
  - N.T. NON-TANGENT