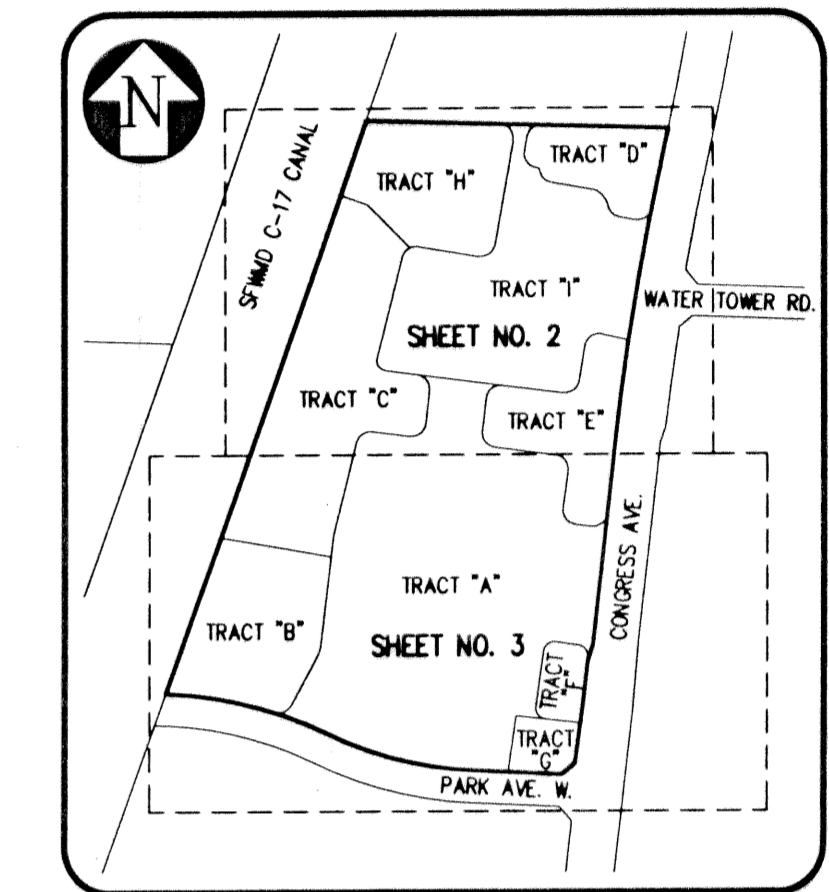
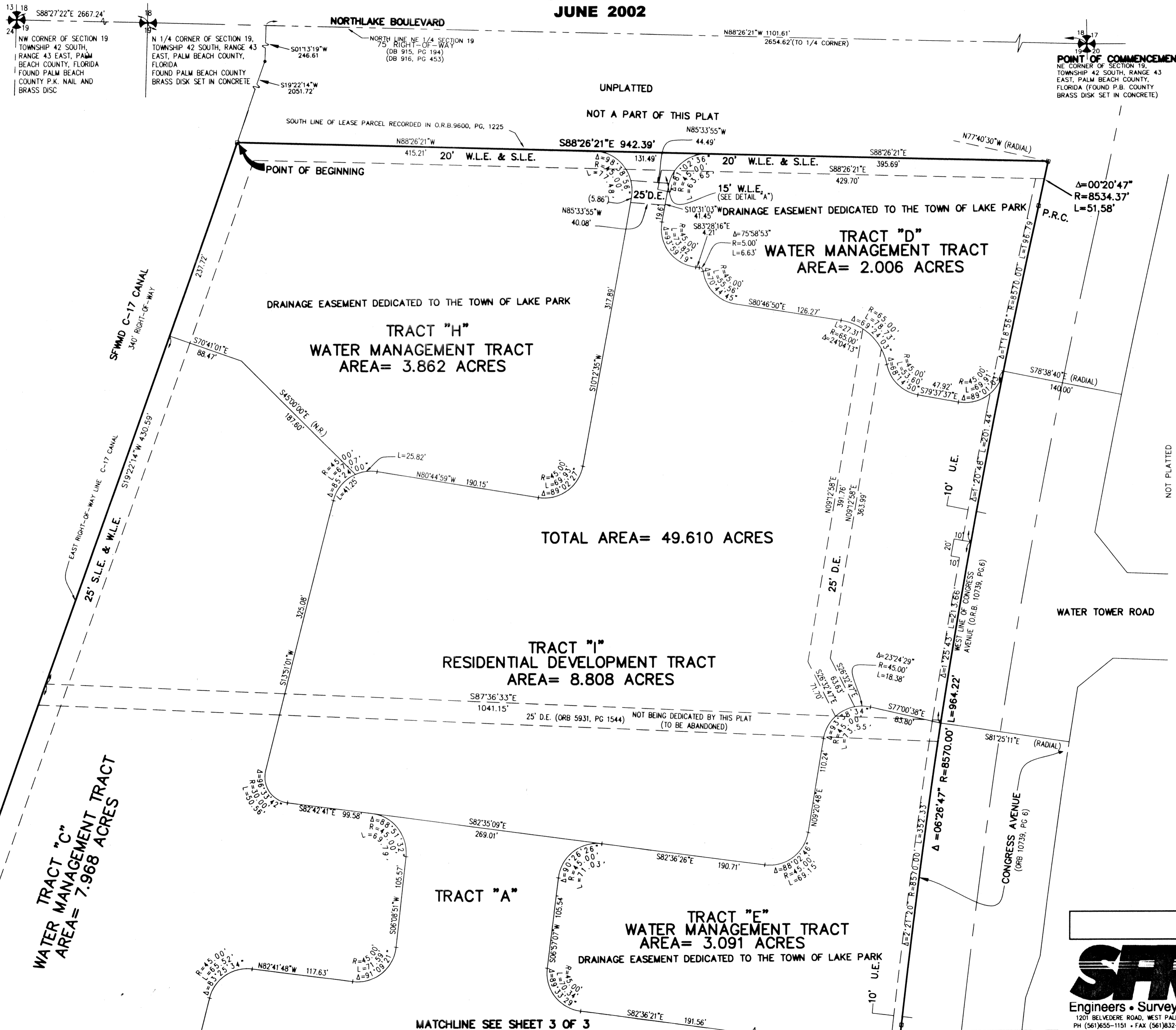
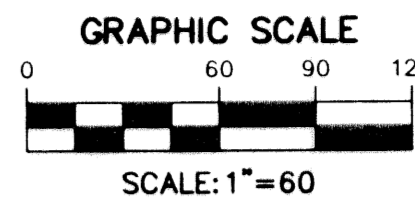
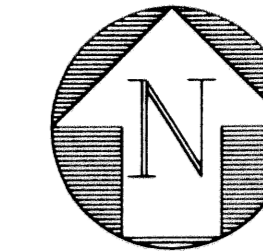
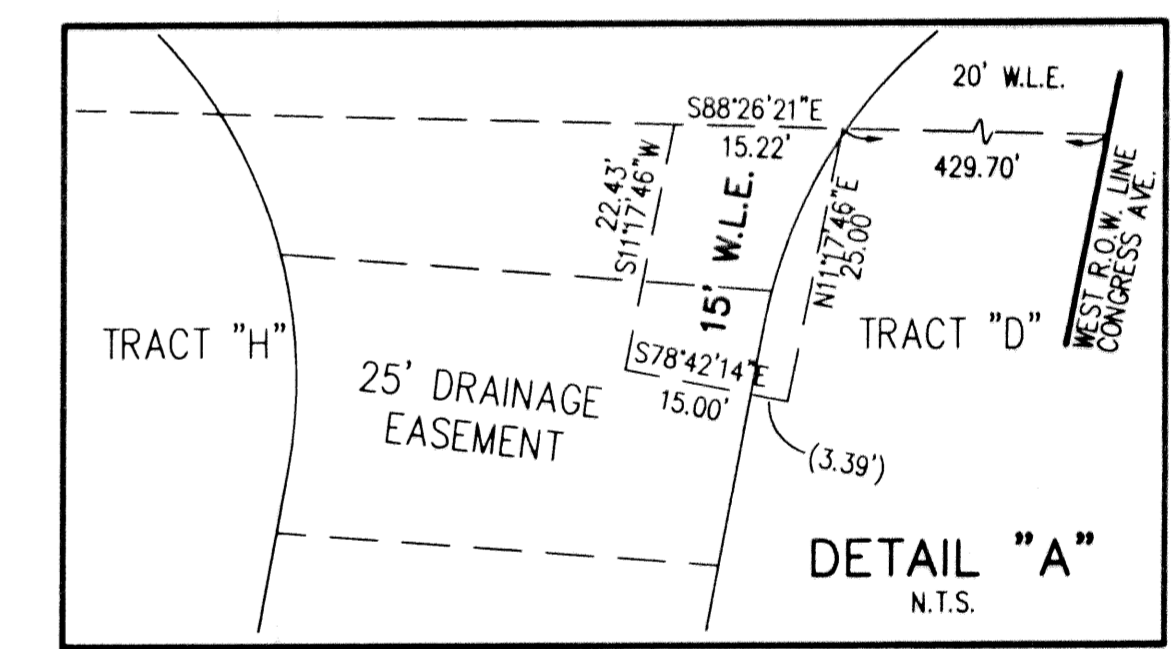


WESTLAKE

Being a parcel of land, lying in Section 19, Township 42 South, Range 43 East,
Town of Lake Park, Palm Beach County, Florida.
SHEET 2 OF 3
JUNE 2002



SHEET INDEX
N.T.S.



DETAIL "A"
N.T.S.

- LEGEND**
- R RADIUS
 - L ARC LENGTH
 - Δ DELTA ANGLE
 - O.R.B. OFFICIAL RECORD BOOK
 - P.O.B. POINT OF BEGINNING
 - P.O.C. POINT OF COMMENCEMENT
 - L.A.E. LIMITED ACCESS EASEMENT
 - R.O.W. RIGHT-OF-WAY
 - P.B. PLAT BOOK
 - PG. PAGE
 - U.E. UTILITY EASEMENT
 - D.E. DRAINAGE EASEMENT
 - CL CENTER LINE
 - PERMANENT REFERENCE MONUMENT
 - N.R. NON-RADIAL
 - L.S.E. LIFT STATION EASEMENT
 - W.L.E. WATER LINE EASEMENT
 - S.L.E. SEWER LINE EASEMENT
 - P.R.C. POINT OF REVERSE CURVATURE

WESTLAKE

SFRN
Engineers • Surveyors • Mappers

DATE	10/02/2001
SCALE	1" = 60'
CAD FILE	95513PLAT.dwg
SDSK PROJECT	00074
DRAWN	SFRN STAFF
CHECKED	G. RAYMAN

SHEET NO.	2/3
JOB NO.	00074

1201 BELVEDERE ROAD, WEST PALM BEACH, FLORIDA 33405
PH (561)855-1151 • FAX (561)832-9390 • WWW.SFRNINC.COM

Y:\Land Projects R2\00074\dwg\00074PLAT.dwg 07/24/2002 01:22:51 PM EDT