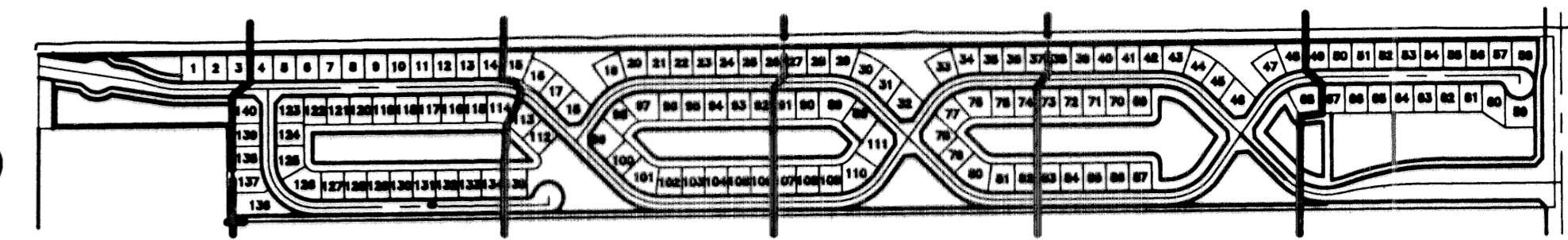


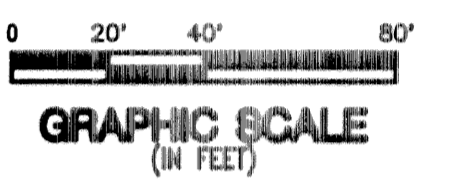
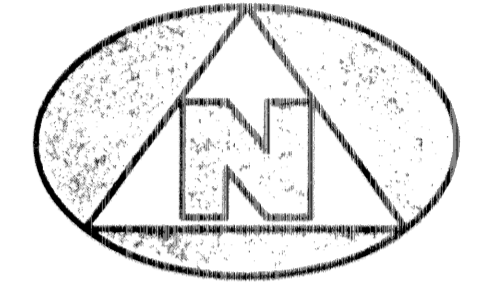
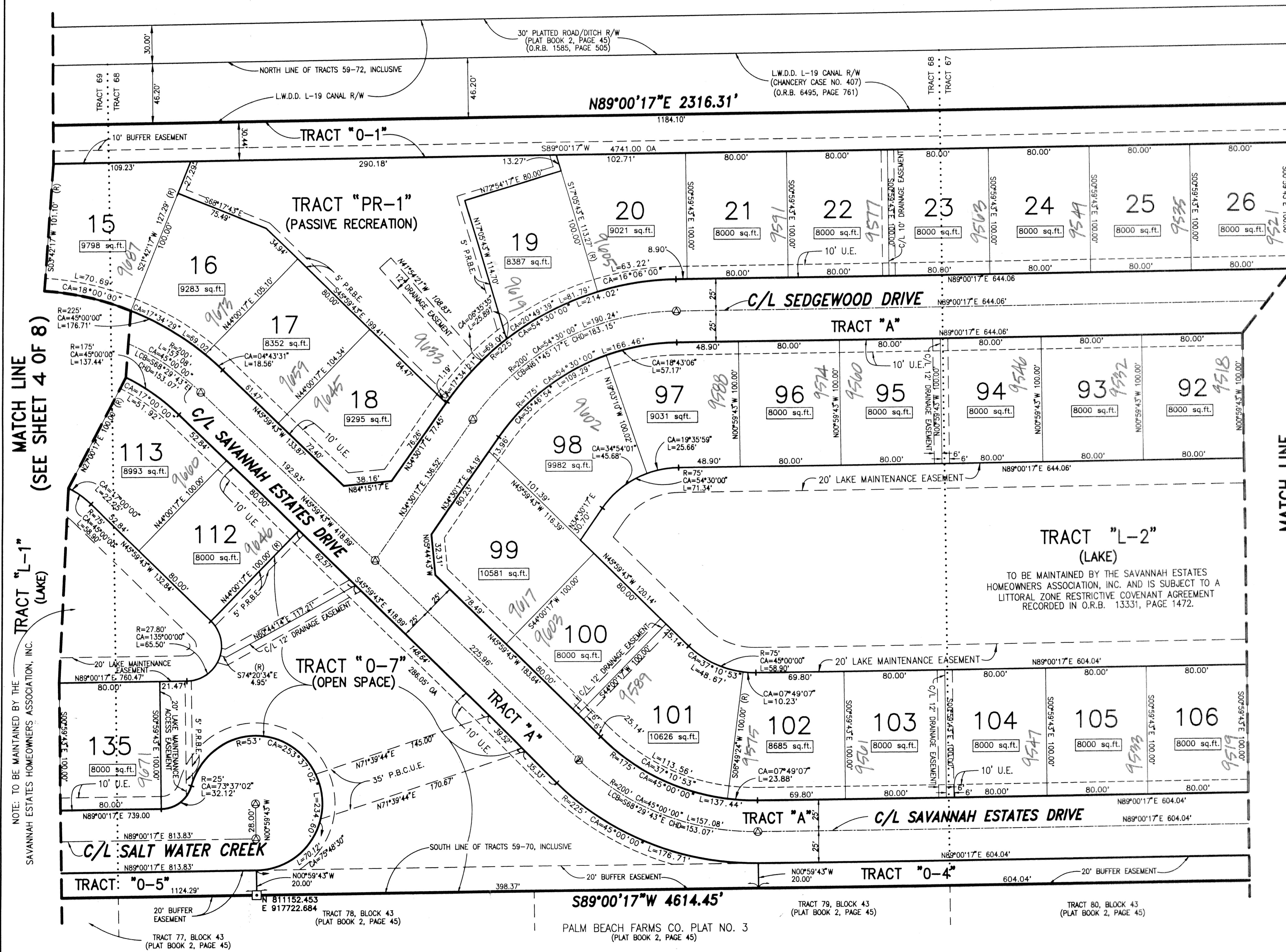
BEING A REPLAT OF PORTIONS OF TRACTS 59-72, INCLUSIVE, AND A PORTION OF A 30 FOOT ROAD RIGHT-OF-WAY, ALL IN BLOCK 43, PALM BEACH FARMS CO. PLAT NO. 3, RECORDED IN PLAT BOOK 2, PAGE 45, PUBLIC RECORDS, PALM BEACH COUNTY, FLORIDA, AND LYING IN SECTION 7, TOWNSHIP 45 SOUTH, RANGE 42 EAST, PALM BEACH COUNTY, FLORIDA

INDEX TO SHEETS



SHEET 3 SHEET 4 SHEET 5 SHEET 6 SHEET 7 SHEET 8

PALM BEACH FARMS CO. PLAT NO. 3
(PLAT BOOK 2, PAGE 45)



LEGEND:

- (R) DENOTES A RADIAL LINE
- C/L DENOTES A CENTERLINE
- L.A.E. DENOTES A LIMITED ACCESS EASEMENT
- U.E. DENOTES UTILITY EASEMENT
- D.E. DENOTES DRAINAGE EASEMENT
- R DENOTES RADIUS DISTANCE
- L DENOTES ARC LENGTH DISTANCE
- CA DENOTES CENTRAL ANGLE
- LCB DENOTES LONG CHORD BEARING
- CHD DENOTES CHORD DISTANCE
- O.R.B. DENOTES OFFICIAL RECORDS BOOK
- P.B. DENOTES PLAT BOOK NUMBER
- P.G. DENOTES PAGE NUMBER
- D.B. DENOTES DEED BOOK
- OA DENOTES OVER ALL DISTANCE
- MONUMENT (NO 2424) DENOTES A SET PERMANENT REFERENCE MONUMENT (NO 2424)
- MONUMENT (NO 2424) DENOTES A SET PERMANENT CONTROL POINT (NO. 2424)
- L.W.D.D. DENOTES LAKE WORTH DRAINAGE DISTRICT
- R/W DENOTES RIGHT-OF-WAY
- P.B.C.U.E. DENOTES PALM BEACH COUNTY UTILITY EASEMENT
- P.R.B.E. DENOTES PASSIVE RECREATION BUFFER EASEMENT
- N=1324.567 DENOTES NORTHING COORDINATE
- E=1234.567 DENOTES EASTING COORDINATE

SURVEYOR'S NOTES:

1. THE BASE BEARING, AS SHOWN HEREON, IS SOUTH 00°35'32" EAST ALONG THE WEST LINE OF SECTION 7.
2. IN THOSE INSTANCES WHERE UTILITY/DRAINAGE STRUCTURES ARE CONSTRUCTED IN CONFLICT WITH THE PLATTED PERMANENT CONTROL POINTS (P.C.P.) POSITION, STRADDLERS MONUMENTED AS PERMANENT CONTROL POINTS WILL BE SET TO REFERENCE THE PLATTED P.C.P. POSITION.
3. LINES WHICH INTERSECT CURVES ARE NOT RADIAL UNLESS OTHERWISE NOTED.
4. THIS INSTRUMENT WAS PREPARED BY WM. R. VAN CAMPEN, P.S.M. IN AND FOR THE OFFICES OF BENCH MARK LAND SURVEYING AND MAPPING, INC., 4152 WEST BLUE HERON BOULEVARD, SUITE 121, RIVIERA BEACH, FLORIDA.

BENCH MARK LAND SURVEYING & MAPPING, INC.
 4152 W. BLUE HERON BOULEVARD • SUITE 121
 RIVIERA BEACH • FLORIDA 33404
 PHONE: (561) 848-2102 • L.B. 2171 • FAX: (561) 844-9659
 EMAIL: bmlsm@aol.com WEB: http://members.aol.com/bmlsm

RECORD PLAT			
SAVANNAH ESTATES			
DWN HERMIE	FB	DATE 05-15-2001	WO.# P252.PL1
CKD	FILE P252.PL1-SHT4	SCALE 1"=40'	SHEET 5 OF 8

SUBDIVISION SAVANNAH ESTATES
 BOOK 95 PAGE 103 FLOOD MAP # 185A
 FLOOD ZONE 5 ZONING PUB
 QUAD # 49 SE ZIP CODE 33467
 TAZ 743 DIAMOND SHAMROCK
 PUD NAME

MATCH LINE (SEE SHEET 4 OF 8)

MATCH LINE (SEE SHEET 6 OF 8)

MATCH LINE (SEE SHEET 6 OF 8)

NOTE: TO BE MAINTAINED BY THE SAVANNAH ESTATES HOMEOWNERS ASSOCIATION, INC.

TRACT 77, BLOCK 43 (PLAT BOOK 2, PAGE 45)

TRACT 78, BLOCK 43 (PLAT BOOK 2, PAGE 45)

PALM BEACH FARMS CO. PLAT NO. 3 (PLAT BOOK 2, PAGE 45)

TRACT 79, BLOCK 43 (PLAT BOOK 2, PAGE 45)

TRACT 80, BLOCK 43 (PLAT BOOK 2, PAGE 45)