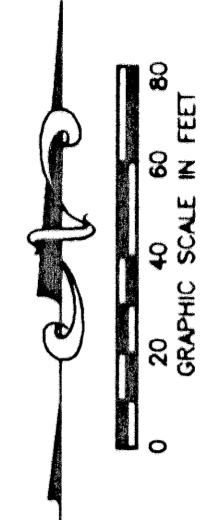


MIRASOL PARCEL TWELVE

PART OF GOLF DIGEST P.C.D.
SECTION 4, TOWNSHIP 42 SOUTH, RANGE 42 EAST,
CITY OF PALM BEACH GARDENS,
PALM BEACH COUNTY, FLORIDA
SHEET 4 OF 5

LEGEND

- Δ CENTRAL (DELTA) ANGLE
- CH CHORD
- IEE INGRESS-EGRESS EASEMENT
- L ARC LENGTH
- NPBCID NORTHERN PALM BEACH COUNTY IMPROVEMENT DISTRICT
- ORB OFFICIAL RECORD BOOK
- PAE PEDESTRIAN ACCESS EASEMENT
- PB PLAT BOOK
- PCD PLANNED COMMUNITY DEVELOPMENT
- R RADIUS
- UE UTILITY EASEMENT
- WLE WATER LINE EASEMENT
- PERMANENT REFERENCE MONUMENT FOUND LB 048 (4" x 4" CONCRETE)
- PERMANENT REFERENCE MONUMENT SET LB 048 (4" x 4" CONCRETE)
- PERMANENT CONTROL POINT SET LB 048
- ⊕ CENTERLINE

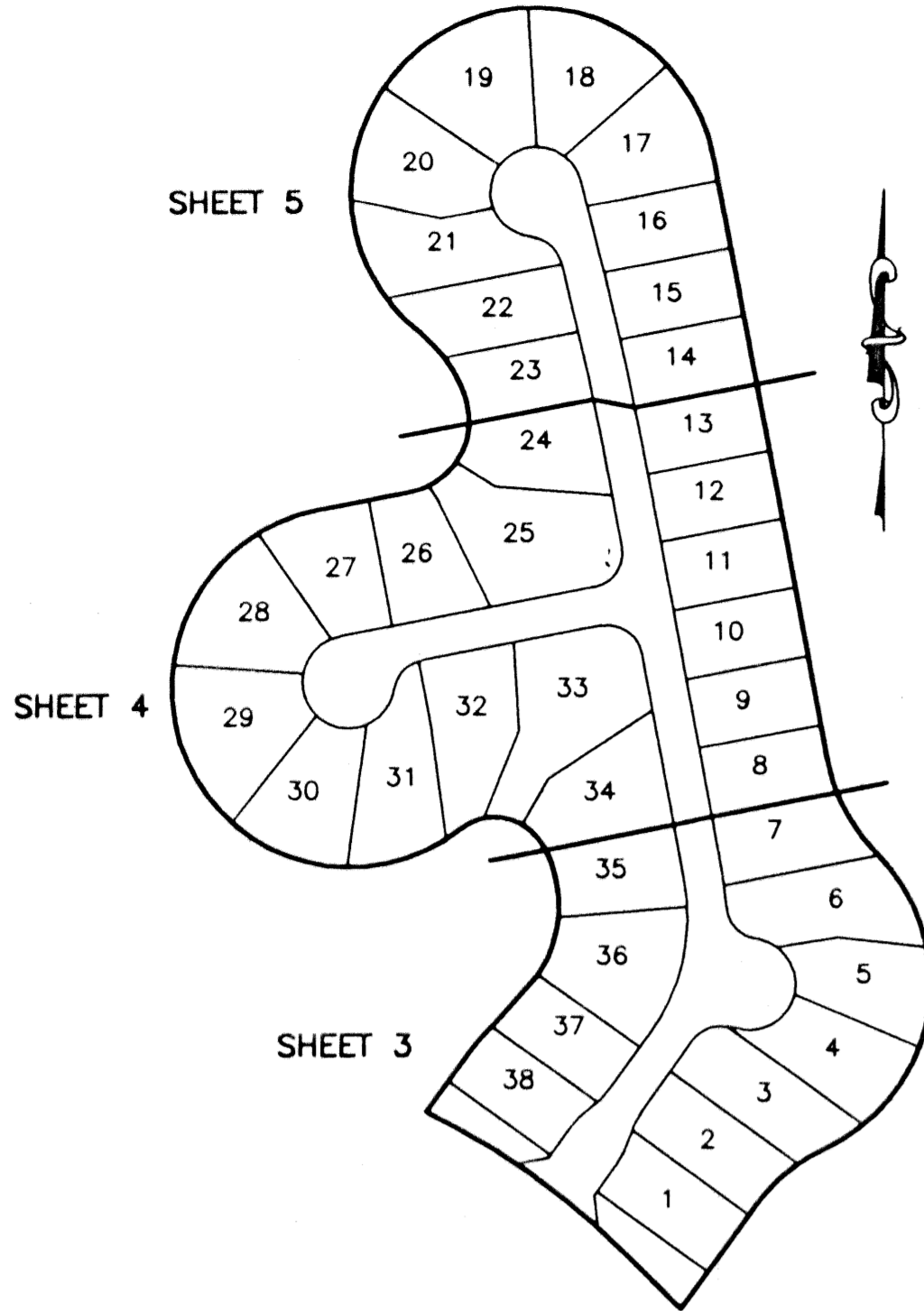


STATE OF FLORIDA
COUNTY OF PALM BEACH

THIS PLAT WAS FILED FOR RECORD THIS _____ DAY OF _____ AD, 2002 AND DULY RECORDED IN PLAT BOOK _____ ON PAGES _____ AND _____

DOROTHY H. WILKEN, CLERK
BY: _____, D.C.

CIRCUIT COURT SEAL

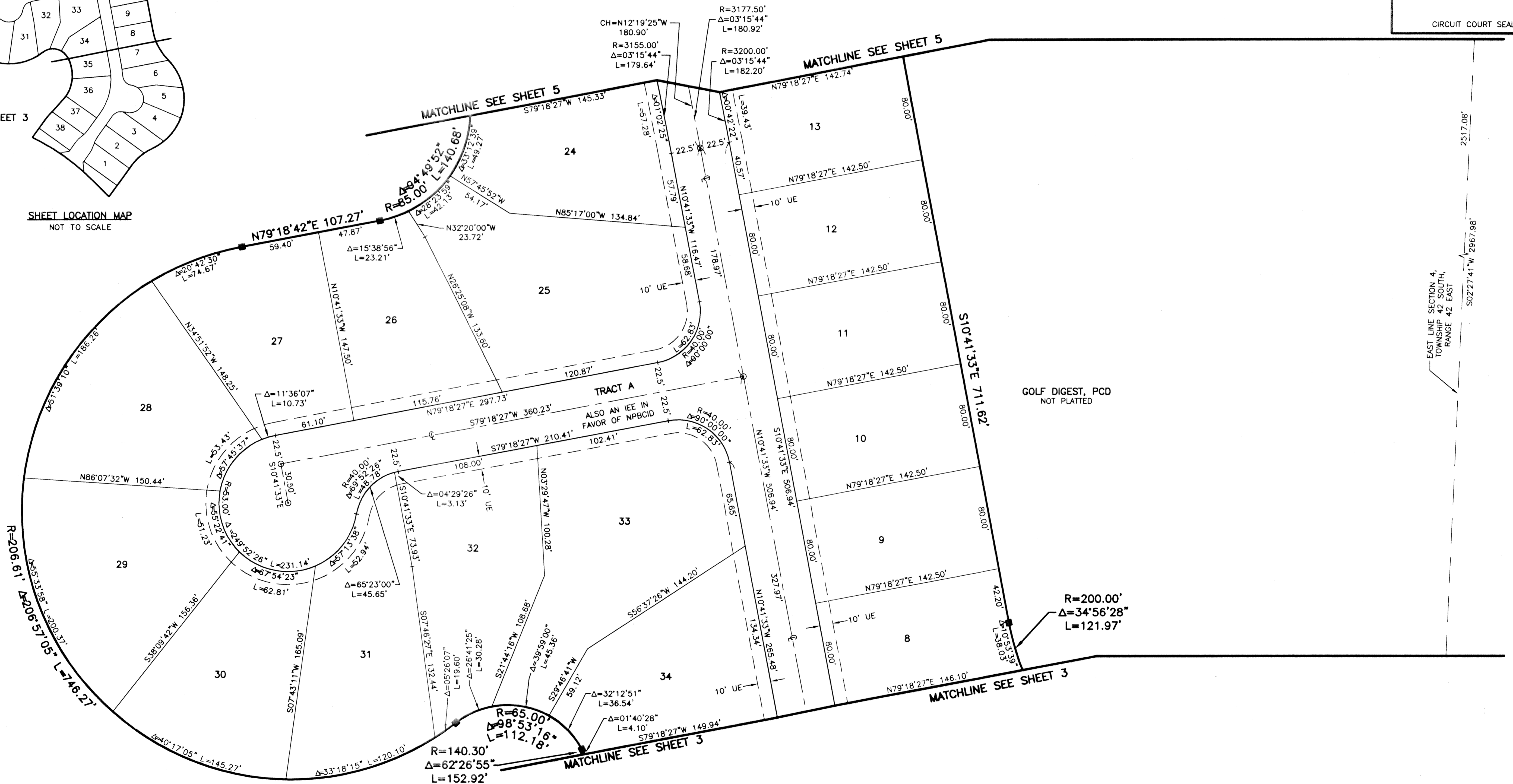


SHEET LOCATION MAP
NOT TO SCALE

GOLF DIGEST, PCD
NOT PLATTED

GOLF DIGEST, PCD
NOT PLATTED

EAST LINE SECTION 4,
TOWNSHIP 42 SOUTH,
RANGE 42 EAST



THIS INSTRUMENT WAS PREPARED BY MARY HANNA CLODFELTER, P.S.M. IN THE OFFICES OF MOCK, ROOS & ASSOCIATES, INC., 5720 CORPORATE WAY, WEST PALM BEACH, FLORIDA 33407.

SHEET 4 OF 5

SCALE:
1"=40'

P.A. NO.:
99365.00

DATE:
DECEMBER, 2001

DRAWING NO.:
42-42-04-113

FLORIDA L.B. NO. 48

MOCK • ROOS
ENGINEERS • SURVEYORS • PLANNERS

5720 Corporate Way, West Palm Beach, Florida 33407
(561) 683-3113, fax 478-7248

MIRASOL PARCEL TWELVE
PART OF GOLF DIGEST P.C.D.
SITUATE IN SECTION 4,
TOWNSHIP 42 SOUTH, RANGE 42 EAST,
CITY OF PALM BEACH GARDENS,
PALM BEACH COUNTY, FLORIDA