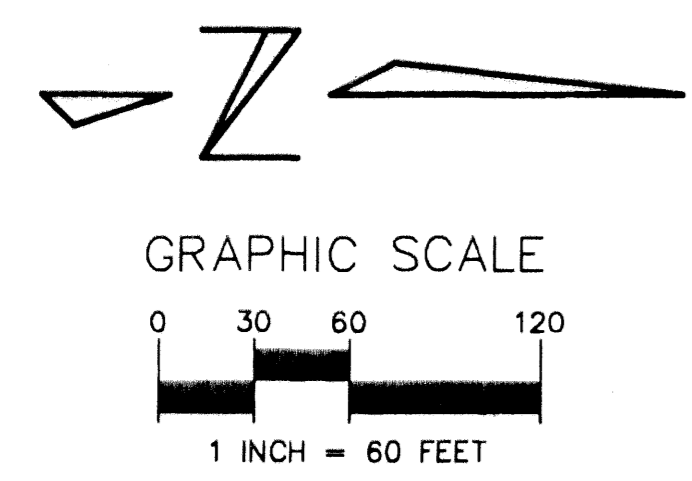
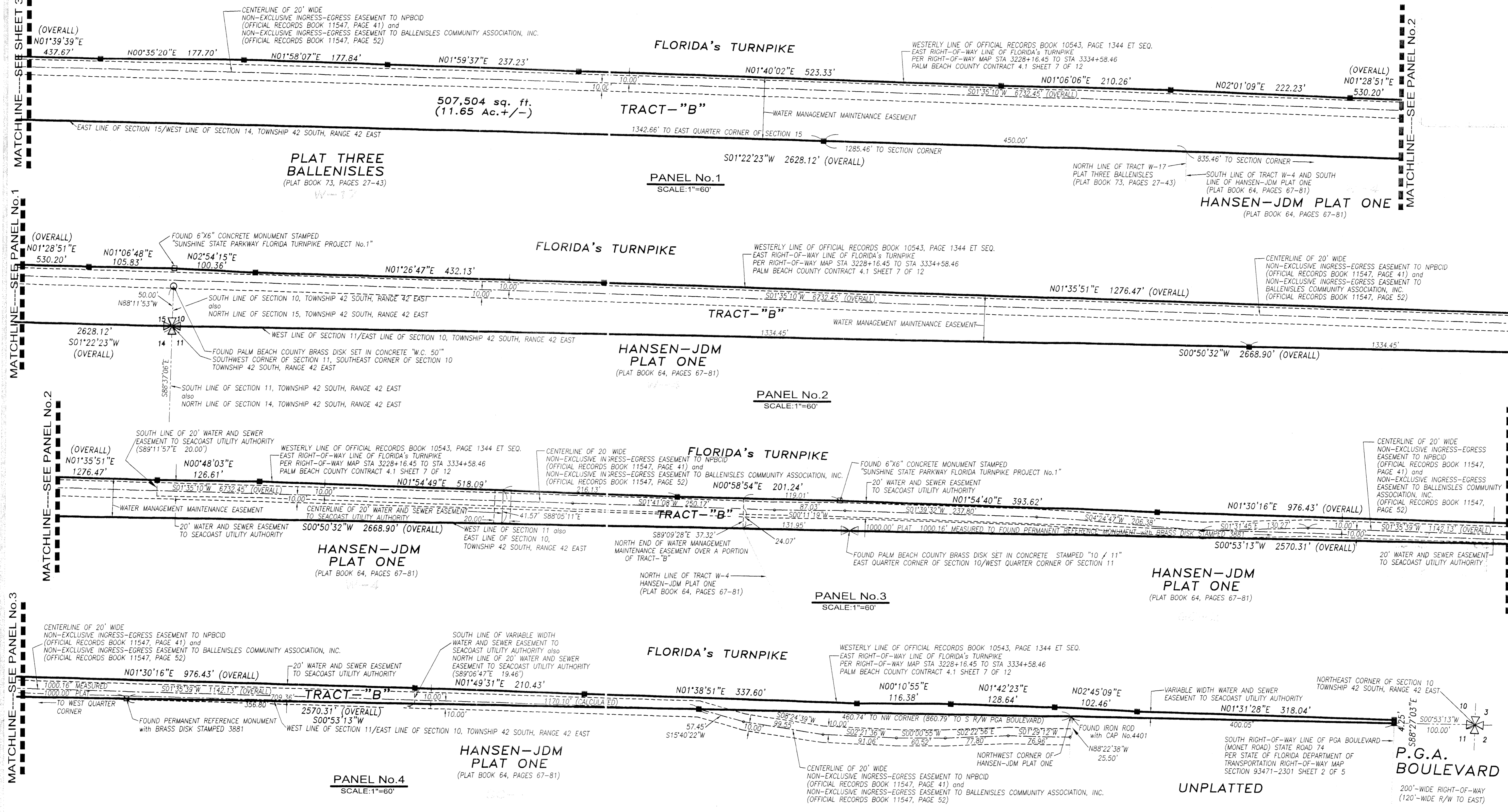


BALLENISLES SOUTHWEST AREA

A PARCEL OF LAND LYING IN THE EAST ONE HALF OF SECTIONS 10 and 15, TOWNSHIP 42 SOUTH, RANGE 42 EAST,
and THE SOUTHWEST ONE QUARTER OF SECTION 14, TOWNSHIP 42 SOUTH, RANGE 42 EAST,
CITY OF PALM BEACH GARDENS, PALM BEACH COUNTY, FLORIDA
SHEET 4 OF 4 APRIL 2002

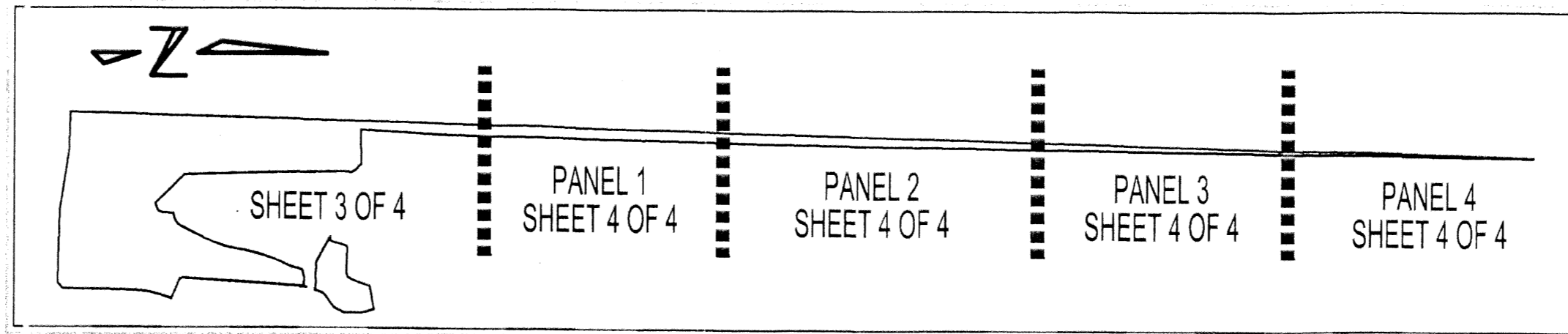
MATCHLINE--SEE SHEET 3 OF 4
MATCHLINE--SEE PANEL No. 1
MATCHLINE--SEE PANEL No. 2
MATCHLINE--SEE PANEL No. 3
MATCHLINE--SEE PANEL No. 4

MATCHLINE--SEE PANEL No. 2
MATCHLINE--SEE PANEL No. 3
MATCHLINE--SEE PANEL No. 4

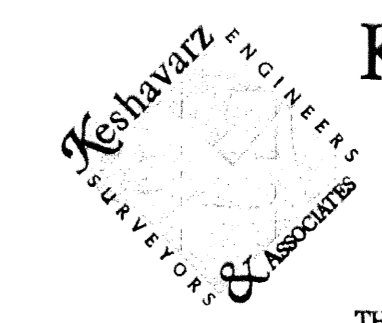
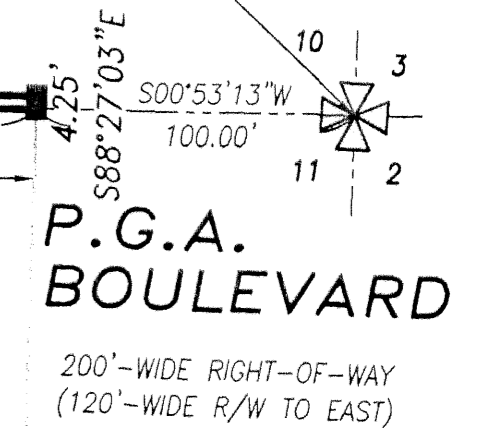


SYMBOLS LEGEND

■	SET 4"x4" PERMANENT REFERENCE MONUMENT (P.R.M.) "L.B. 4897"
□	FOUND 4"x4" PERMANENT REFERENCE MONUMENT (P.R.M.) "L.B. 4897" UNLESS MARKED DIFFERENTLY
NPBCID	NORTHERN PALM BEACH COUNTY IMPROVEMENT DISTRICT
R	RADIUS
∠	CENTRAL ANGLE
L	ARC LENGTH
c	CENTERLINE
P.O.C.	POINT OF COMMENCING
P.O.B.	POINT OF BEGINNING



UNPLATTED



Keshavarz & Associates, Inc.
CONSULTING ENGINEERS - SURVEYORS
Licensed Business No. 4897
1280 N. Congress Avenue, Suite 206
West Palm Beach, Florida 33409
Tel: (561) 689-8600 Fax: (561) 689-7476
THIS INSTRUMENT WAS PREPARED BY MANUEL A. GUTIERREZ, PSM
IN THE OFFICES OF KESHAVARZ & ASSOCIATES, INC.
PROFESSIONAL SURVEYOR AND MAPPER NO. 4102