

THIS INSTRUMENT WAS PREPARED BY:



JON V. NOLTING, P.S.M. OF  
CRAVEN - THOMPSON & ASSOCIATES, INC.  
ENGINEERS • PLANNERS • SURVEYORS  
3043 N.W. 53RD STREET FORT LAUDERDALE, FLORIDA 33309 (954) 730-6400  
FAX: (954) 730-6408

AUGUST 2001

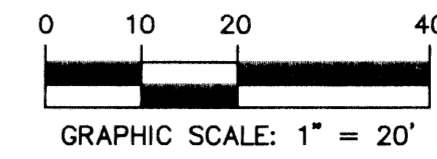
97-0072032

# CITYHOMES AT CITYPLACE

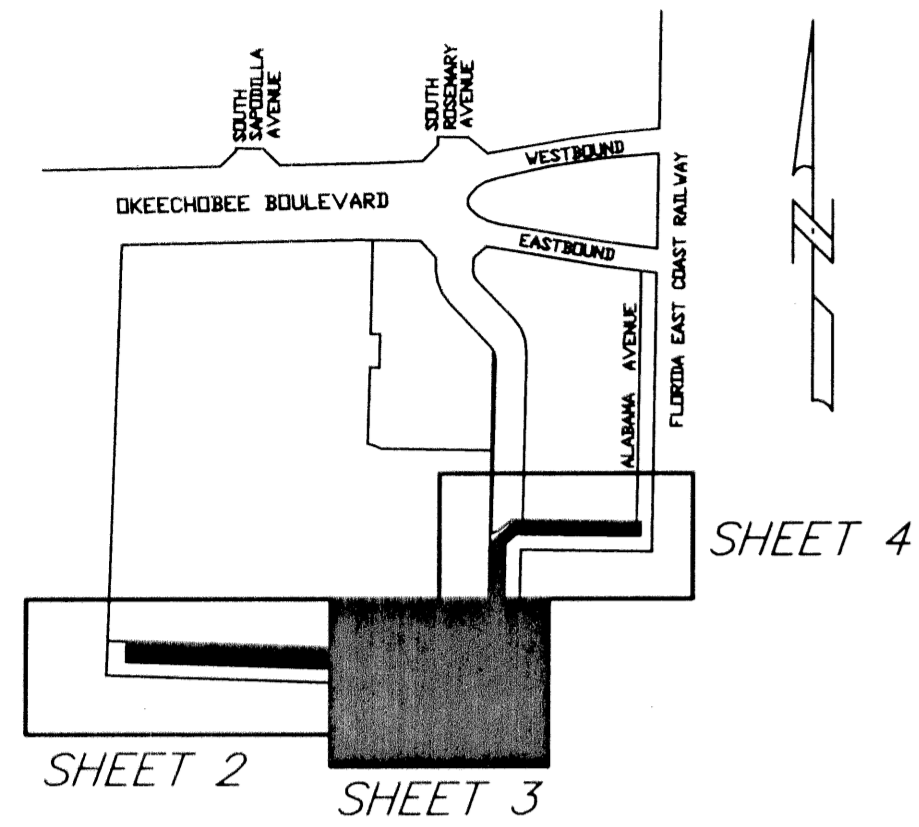
A REPLAT OF TRACT "5", TRACT "6" AND A PORTION OF TRACT "A", CITYPLACE PLAT NO. 2, AS RECORDED IN PLAT BOOK 90, PAGES 33-37  
PALM BEACH COUNTY RECORDS, ALL LYING IN SECTION 28, TOWNSHIP 43 SOUTH, RANGE 43 EAST,  
IN THE CITY OF WEST PALM BEACH, PALM BEACH COUNTY, FLORIDA

SHEET 3 OF 4 SHEETS

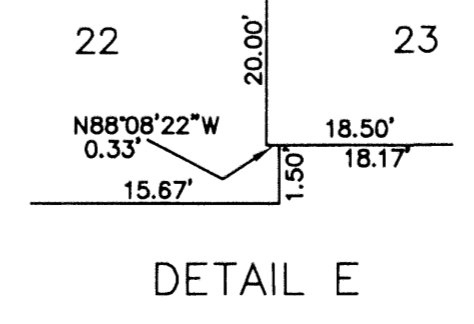
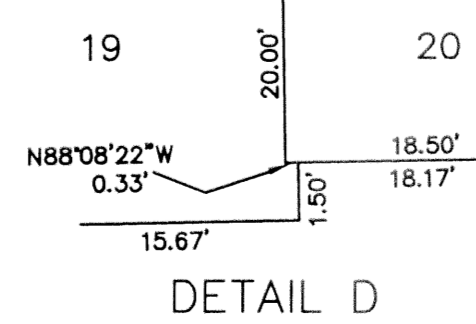
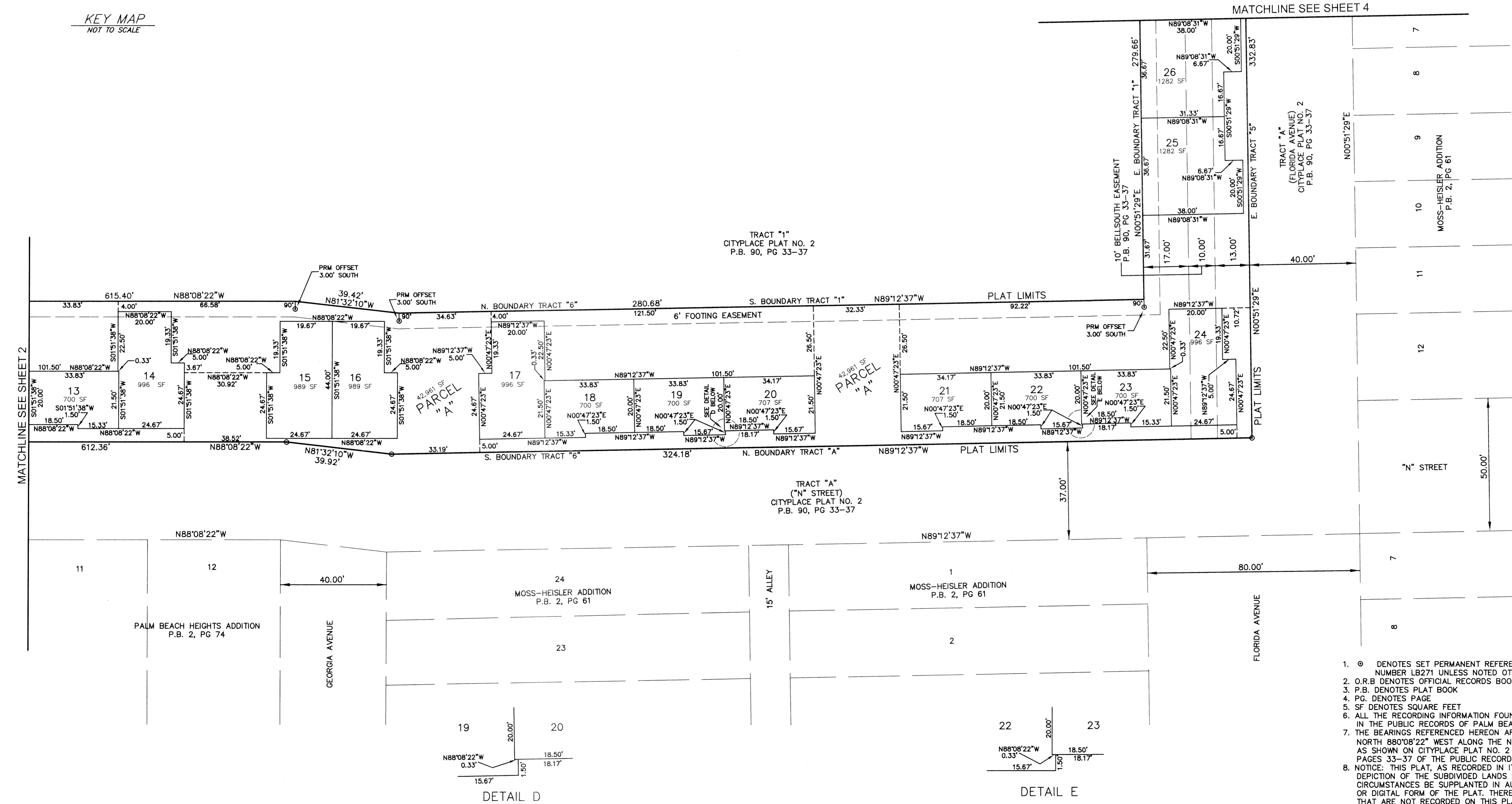
# 108



STATE OF FLORIDA  
COUNTY OF PALM BEACH  
THIS PLAT WAS FILED FOR RECORD AT \_\_\_\_\_  
THIS \_\_\_\_\_ DAY OF \_\_\_\_\_, 2002  
AND DULY RECORDED IN PLAT BOOK NO. \_\_\_\_\_  
ON PAGES \_\_\_\_\_  
DOROTHY H. WILKEN,  
CLERK OF THE CIRCUIT COURT  
BY \_\_\_\_\_ DEPUTY CLERK



KEY MAP  
NOT TO SCALE



- ⊙ DENOTES SET PERMANENT REFERENCE MONUMENT (P.R.M.) NUMBER LB271 UNLESS NOTED OTHERWISE
- O.R.B. DENOTES OFFICIAL RECORDS BOOK
- P.B. DENOTES PLAT BOOK
- PG. DENOTES PAGE
- SF DENOTES SQUARE FEET
- ALL THE RECORDING INFORMATION FOUND HEREON CAN BE FOUND IN THE PUBLIC RECORDS OF PALM BEACH COUNTY
- THE BEARINGS REFERENCED HEREON ARE BASED ON A BEARING OF NORTH 88°08'22\"/>
- NOTICE: THIS PLAT, AS RECORDED IN ITS GRAPHIC FORM IN THE OFFICIAL DEPICTION OF THE SUBDIVIDED LANDS DESCRIBED HEREIN AND WILL IN NO CIRCUMSTANCES BE SUPPLANTED IN AUTHORITY BY ANY OTHER GRAPHIC OR DIGITAL FORM OF THE PLAT. THERE MAY BE ADDITIONAL RESTRICTIONS THAT ARE NOT RECORDED ON THIS PLAT THAT MAY BE FOUND IN THE PUBLIC RECORDS OF THIS COUNTY.