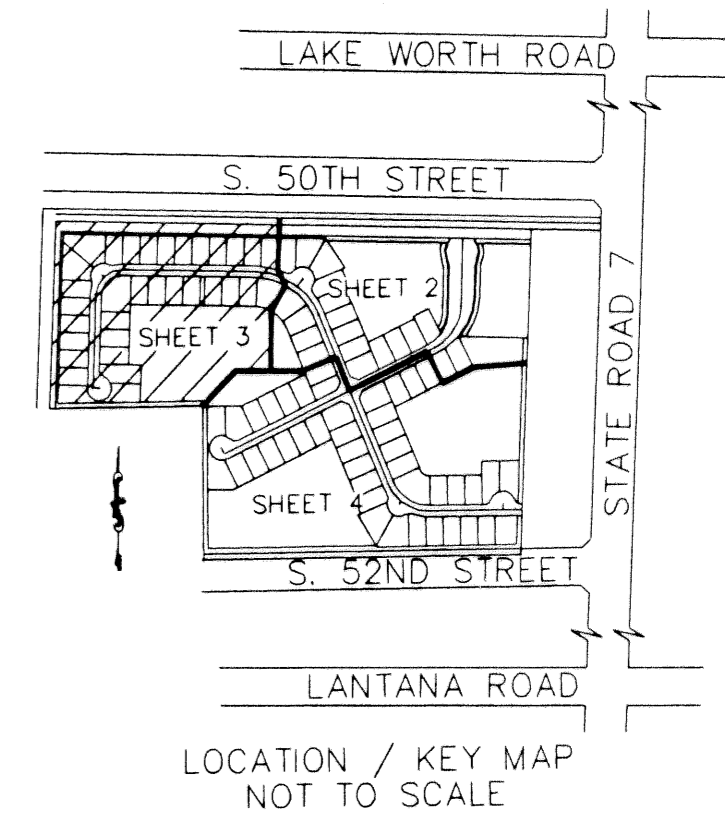


STATE OF FLORIDA
COUNTY OF PALM BEACH
THIS PLAT WAS FILED FOR
RECORD AT _____
THIS _____ DAY OF _____
200____, AND DULY RECORDED
IN PLAT BOOK _____ ON
PAGES _____ THROUGH

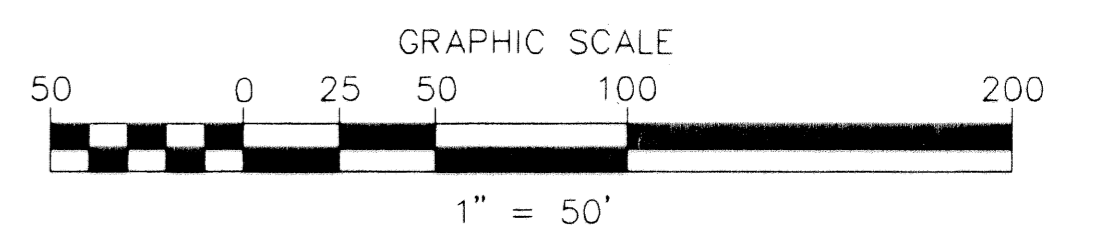
BY: _____DC



SHEET 3 OF 4

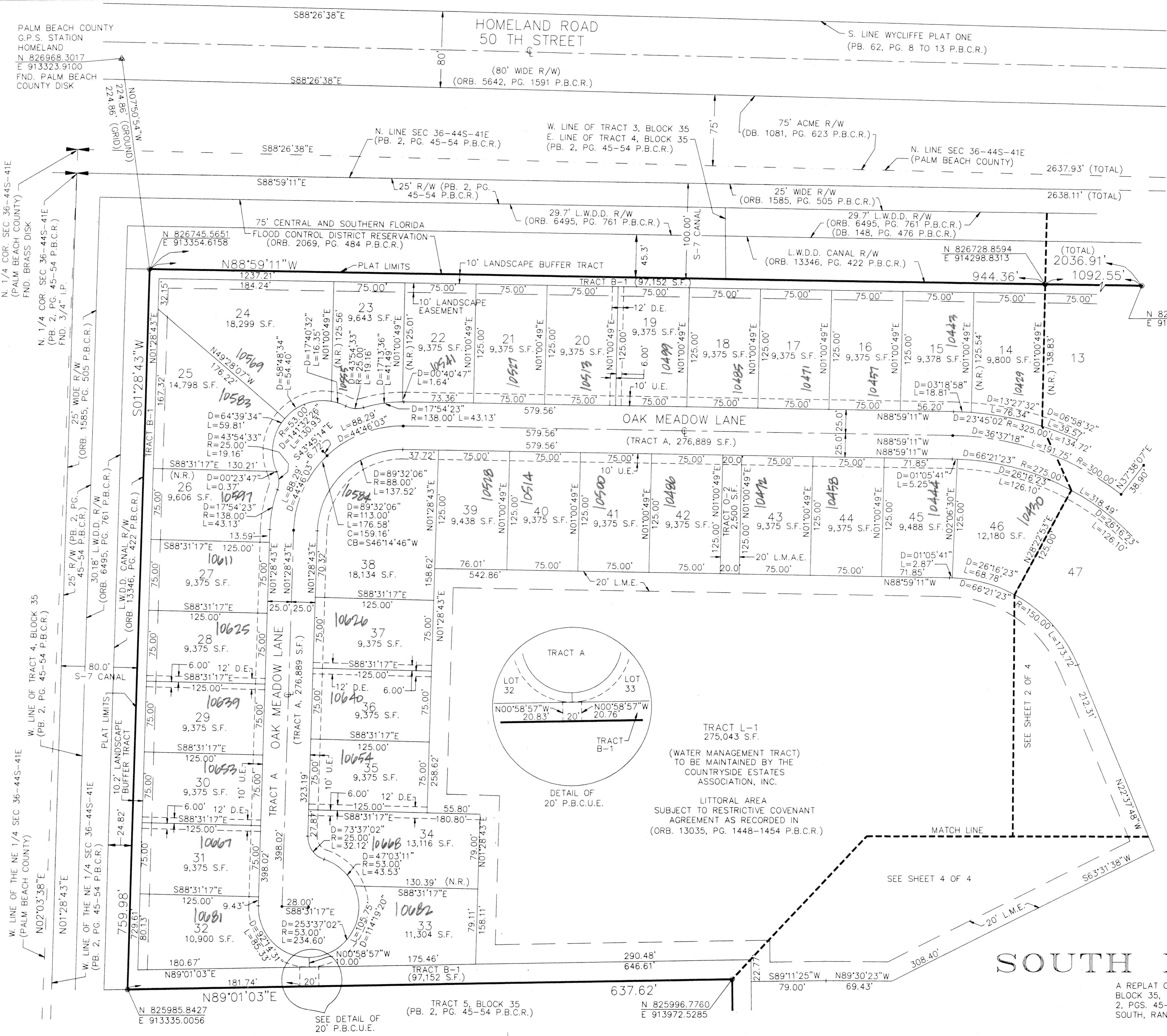


- LEGEND:
- = SET PERMANENT REFERENCE MONUMENT (P.R.M.) #3240 UNLESS NOTED OTHERWISE
- = PERMANENT CONTROL POINT (P.C.P.)
- C = CENTERLINE
- Δ = DELTA (CENTRAL ANGLE)
- R = RADIUS
- L = ARC LENGTH
- U.E. = UTILITY EASEMENT
- D.E. = DRAINAGE EASEMENT
- L.A.E. = LIMITED ACCESS EASEMENT
- L.M.A.E. = LAKE MAINTENANCE ACCESS EASEMENT
- L.M.E. = LAKE MAINTENANCE EASEMENT
- L.S.E. = LIFT STATION EASEMENT
- L.W.D.D. = LAKE WORTH DRAINAGE DISTRICT
- N.R. = NOT RADIAL
- ORB. = OFFICIAL RECORD BOOK
- PG. = PAGE
- PB. = PLATBOOK
- P.B.C.R. = PALM BEACH COUNTY RECORDS
- P.O.B. = POINT OF BEGINNING
- P.O.C. = POINT OF COMMENCEMENT
- P.U.D. = PLANNED UNIT DEVELOPMENT
- R/W = RIGHT OF WAY
- C = CHORD
- CB = CHORD BEARING
- P.B.C.U.E. = PALM BEACH COUNTY UTILITY EASEMENT



SOUTH ROAD, A P.U.D.

A REPLAT OF A PORTION OF LOTS 1, 2, 3, 4, 6, 7 & 8, BLOCK 35, "PALM BEACH FARMS CO. PLAT NO. 3" (PB. 2, PGS. 45-54 P.B.C.R.) IN SECTION 36, TOWNSHIP 44 SOUTH, RANGE 41 EAST, PALM BEACH COUNTY, FLORIDA



SUBDIVISION SOUTH ROAD
PAGE 78
BOOK 015
FLOOD ZONE B
QUAD # 63
SE
TAZ 1021
PUD NAME SOUTH ROAD A PUD
FLOOD MAP # 100B
ZONING PUD
ZIP CODE 33407

PALM BEACH COUNTY
G.P.S. STATION
HOMELAND
N 826968.3017
E 913323.9100
FND. PALM BEACH
COUNTY DISK

N. 1/4 COR. SEC. 36-44S-41E
(PALM BEACH COUNTY)
FND. BRASS DISK
N. 1/4 COR. SEC. 36-44S-41E
(PB. 2, PG. 45-54 P.B.C.R.)
FND. 3/4" I.P.

W. LINE OF TRACT 4, BLOCK 35
(PB. 2, PG. 45-54 P.B.C.R.)

W. LINE OF THE NE 1/4 SEC 36-44S-41E
(PALM BEACH COUNTY)
N02°03'38"E

W. LINE OF THE NE 1/4 SEC 36-44S-41E
(PB. 2, PG. 45-54 P.B.C.R.)

N 825985.8427
E 913335.0056

SEE DETAIL OF
20' P.B.C.U.E.

TRACT 5, BLOCK 35
(PB. 2, PG. 45-54 P.B.C.R.)

N 825996.7760
E 913972.5285

TRACT L-1
275,043 S.F.
(WATER MANAGEMENT TRACT)
TO BE MAINTAINED BY THE
COUNTRYSIDE ESTATES
ASSOCIATION, INC.
LITTORAL AREA
SUBJECT TO RESTRICTIVE COVENANT
AGREEMENT AS RECORDED IN
(ORB. 13035, PG. 1448-1454 P.B.C.R.)

HOMELAND ROAD
50 TH STREET
(80' WIDE R/W)
(ORB. 5642, PG. 1591 P.B.C.R.)

S. LINE WYCLIFFE PLAT ONE
(PB. 62, PG. 8 TO 13 P.B.C.R.)

N. LINE SEC 36-44S-41E
(PB. 2, PG. 45-54 P.B.C.R.)

W. LINE OF TRACT 3, BLOCK 35
E. LINE OF TRACT 4, BLOCK 35
(PB. 2, PG. 45-54 P.B.C.R.)

N. LINE SEC 36-44S-41E
(PALM BEACH COUNTY)

25' R/W (PB. 2, PG. 45-54 P.B.C.R.)

25' WIDE R/W
(ORB. 1585, PG. 505 P.B.C.R.)

29.7' L.W.D.D. R/W
(ORB. 6495, PG. 761 P.B.C.R.)

L.W.D.D. CANAL R/W
(ORB. 13346, PG. 422 P.B.C.R.)

N 826728.8594
E 914298.8313
(TOTAL)
2036.91'

75' CENTRAL AND SOUTHERN FLORIDA
FLOOD CONTROL DISTRICT RESERVATION
(ORB. 2069, PG. 484 P.B.C.R.)

10' LANDSCAPE BUFFER TRACT

TRACT B-1 (97,152 S.F.)

TRACT A, 276,889 S.F.

TRACT L-1, 275,043 S.F.

