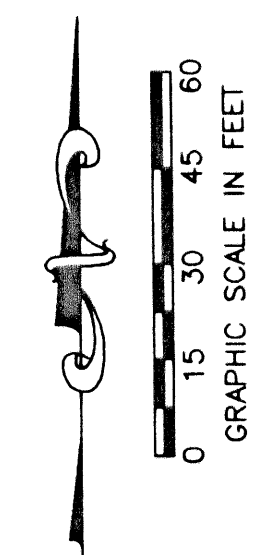


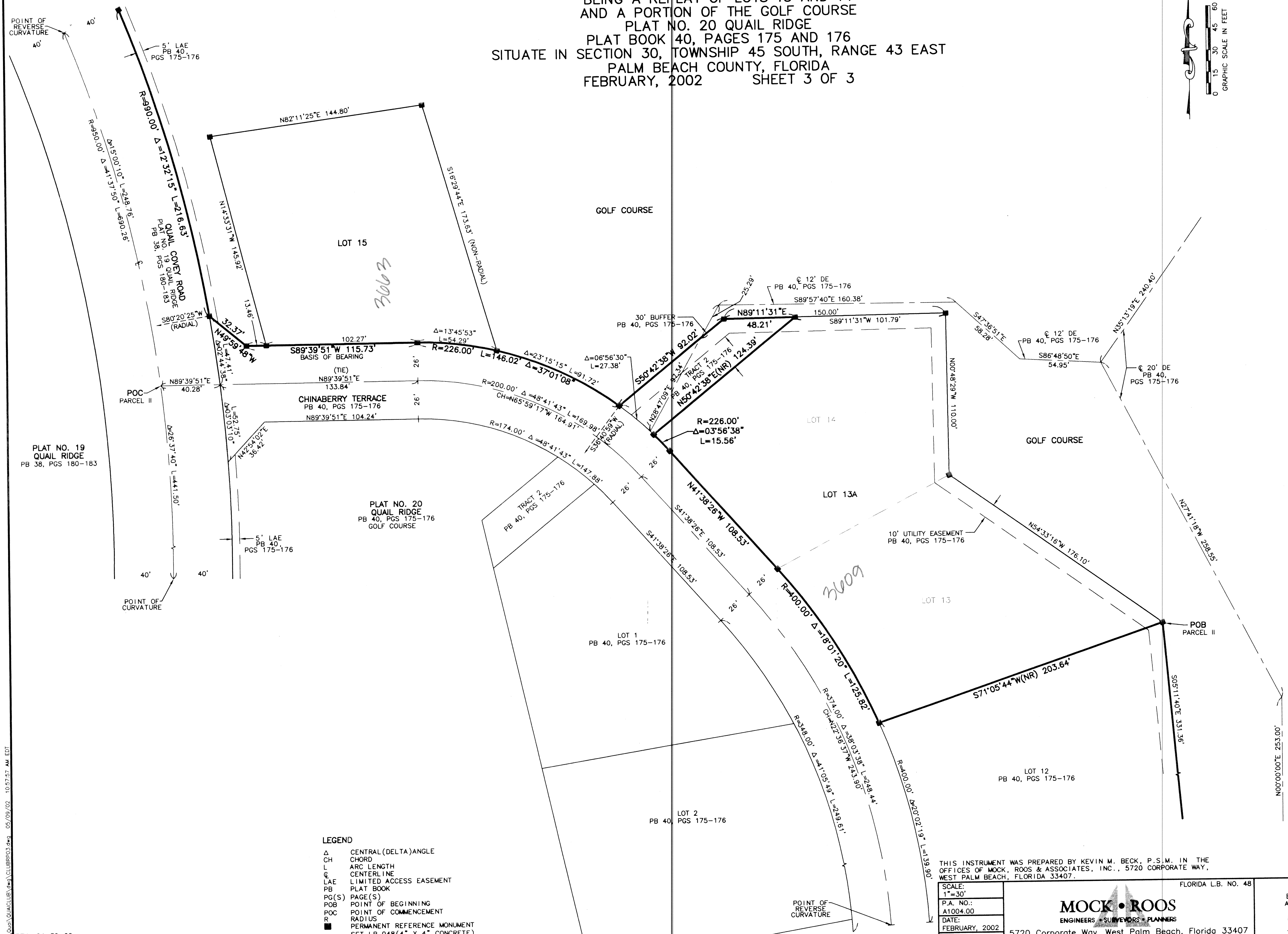
# QUAIL RIDGE PLAT NO. 22, A PUD

BEING A REPLAT OF LOTS 13 AND 14  
AND A PORTION OF THE GOLF COURSE  
PLAT NO. 20 QUAIL RIDGE  
PLAT BOOK 40, PAGES 175 AND 176  
SITUATE IN SECTION 30, TOWNSHIP 45 SOUTH, RANGE 43 EAST  
PALM BEACH COUNTY, FLORIDA  
FEBRUARY, 2002 SHEET 3 OF 3

STATE OF FLORIDA  
COUNTY OF PALM BEACH  
THIS PLAT WAS FILED FOR  
RECORD \_\_\_\_\_ DAY OF \_\_\_\_\_  
AD, 2002 AND DULY RECORDED  
IN PLAT BOOK \_\_\_\_\_ ON PAGES  
\_\_\_\_\_ AND \_\_\_\_\_  
DOROTHY H. WILKEN, CLERK  
BY: \_\_\_\_\_, D.C.



CIRCUIT COURT SEAL



PLAT NO. 19  
QUAIL RIDGE  
PB 38, PGS 180-183

PLAT NO. 20  
QUAIL RIDGE  
PB 40, PGS 175-176  
GOLF COURSE

- LEGEND**
- Δ CENTRAL (DELTA) ANGLE
  - CH CHORD
  - L ARC LENGTH
  - CL CENTERLINE
  - LAE LIMITED ACCESS EASEMENT
  - PB PLAT BOOK
  - PG(S) PAGE(S)
  - POB POINT OF BEGINNING
  - POC POINT OF COMMENCEMENT
  - R RADIUS
  - PERMANENT REFERENCE MONUMENT  
SET LB 048(4" X 4" CONCRETE)

THIS INSTRUMENT WAS PREPARED BY KEVIN M. BECK, P.S.M. IN THE OFFICES OF MOCK, ROOS & ASSOCIATES, INC., 5720 CORPORATE WAY, WEST PALM BEACH, FLORIDA 33407.

SCALE:	1"=30'
P.A. NO.:	A1004.00
DATE:	FEBRUARY, 2002
DRAWING NO.:	45-43-30-93

FLORIDA L.B. NO. 48

**MOCK • ROOS**  
ENGINEERS • SURVEYORS • PLANNERS

5720 Corporate Way, West Palm Beach, Florida 33407  
(561) 683-3113, fax 478-7248

**QUAIL RIDGE PLAT NO. 22**  
BEING A REPLAT OF LOTS 13 AND 14  
AND A PORTION OF THE GOLF COURSE  
PLAT NO. 20 QUAIL RIDGE  
PLAT BOOK 40, PAGES 175 AND 176  
SITUATE IN SECTION 30,  
TOWNSHIP 45 SOUTH, RANGE 43 EAST  
PALM BEACH COUNTY, FLORIDA