

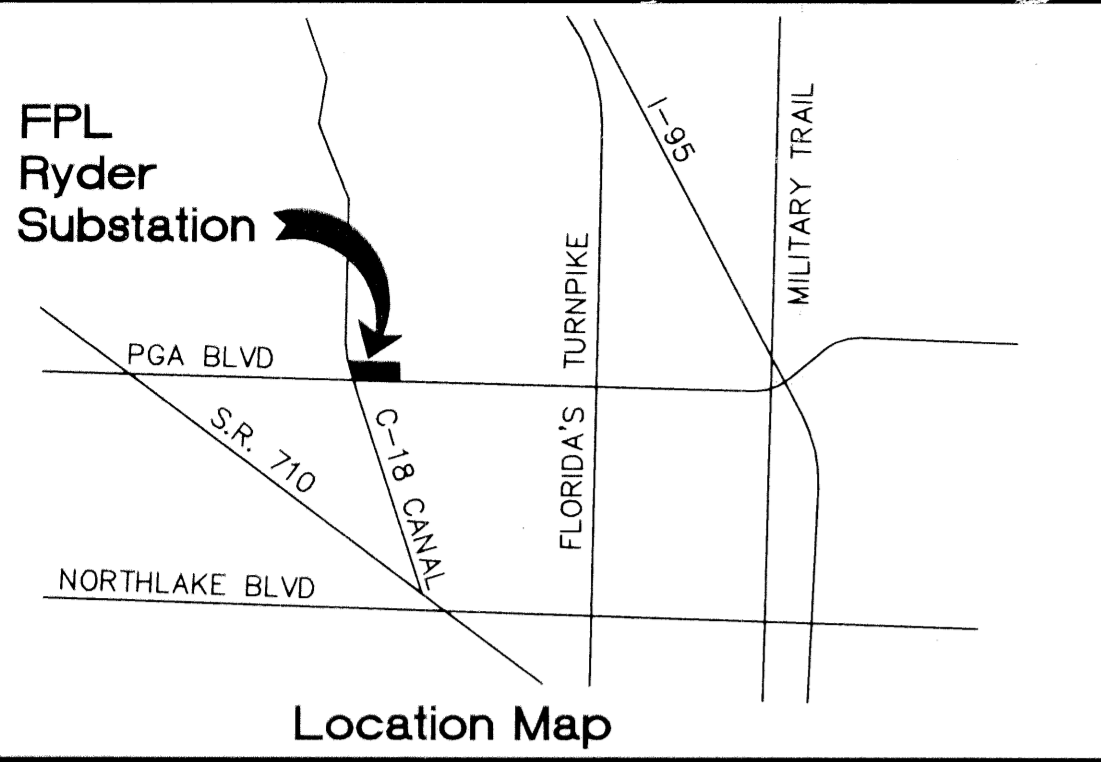
# RYDER SUBSTATION FLORIDA POWER & LIGHT COMPANY

A Parcel of Land lying in Section 5, Township 42 South, Range 42 East  
City of Palm Beach Gardens, Palm Beach County, Florida

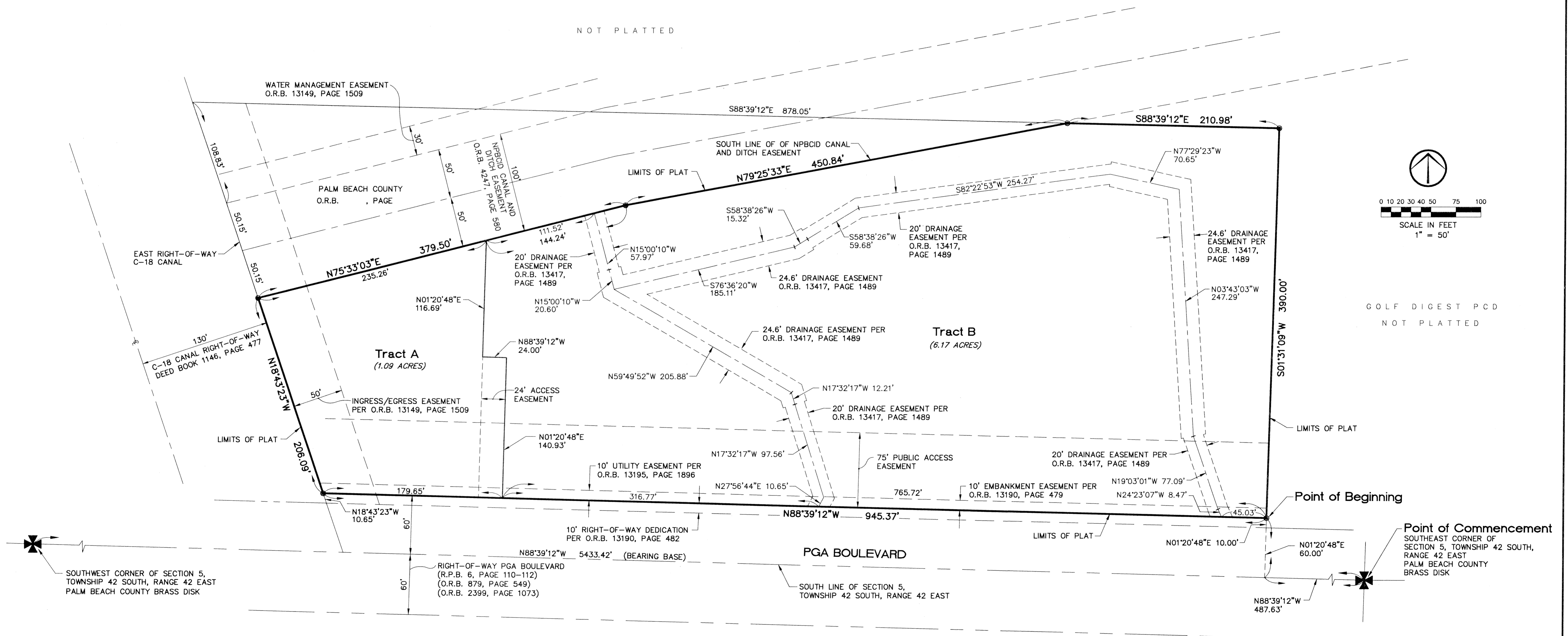
April, 2002

This Instrument prepared by Frank C. Palmer, P.S.M.  
Williams, Hatfield & Stoner, Inc. - Engineers Surveyors Planners Environmental Scientists  
1901 South Congress Avenue, Suite 150, Boynton Beach, Florida 33426  
Certificate of Authorization No. LB-26

Sheet 2 of 2



NOT PLATTED



P.G.A. RESORT COMMUNITY PLAT NO. 6  
PLAT BOOK 47, PAGES 153 - 157