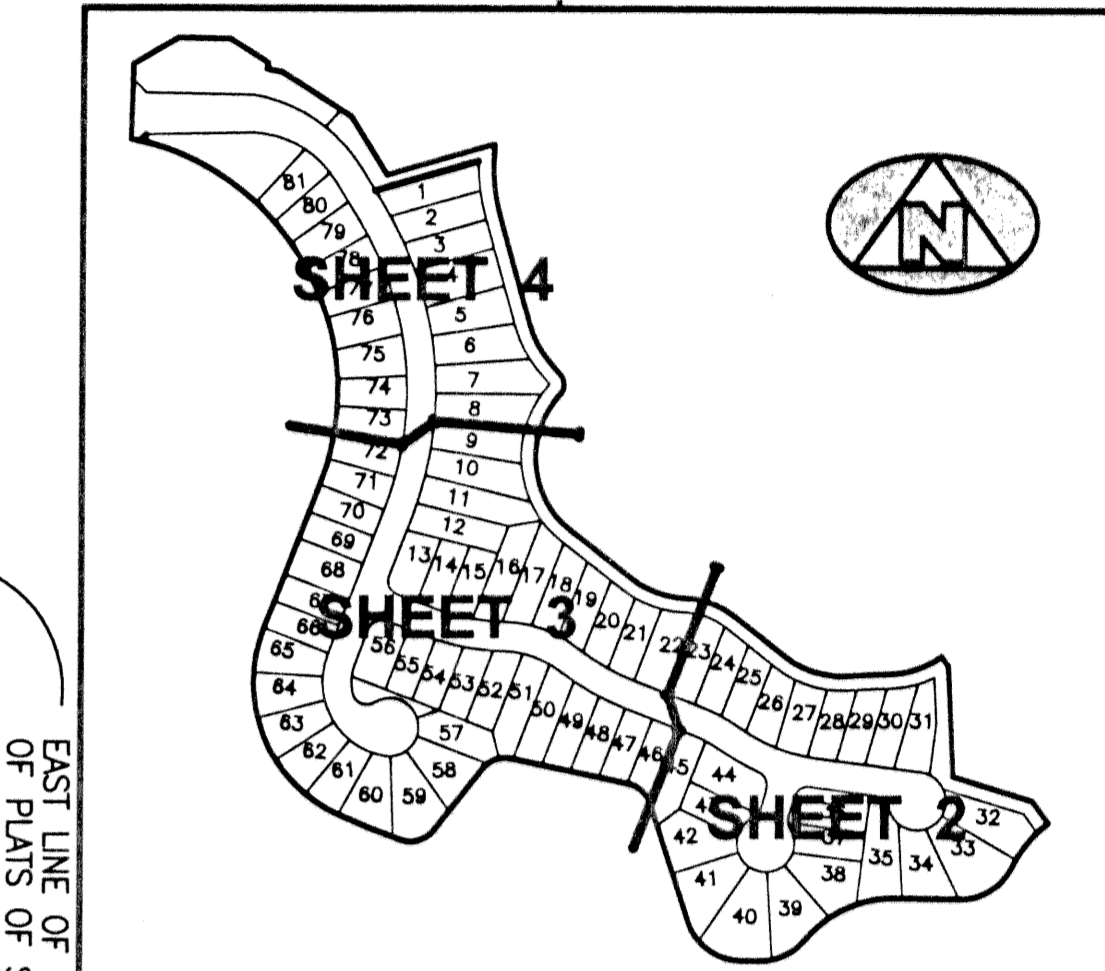
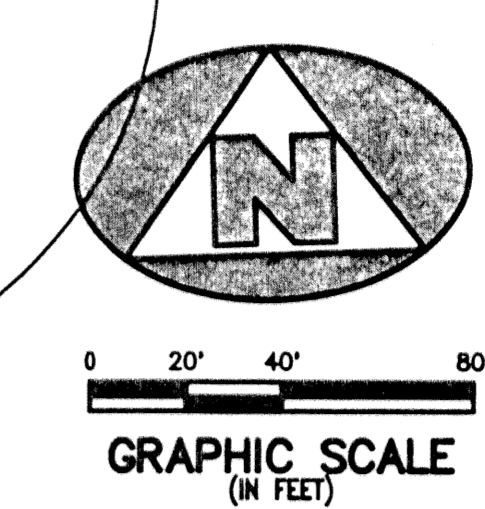
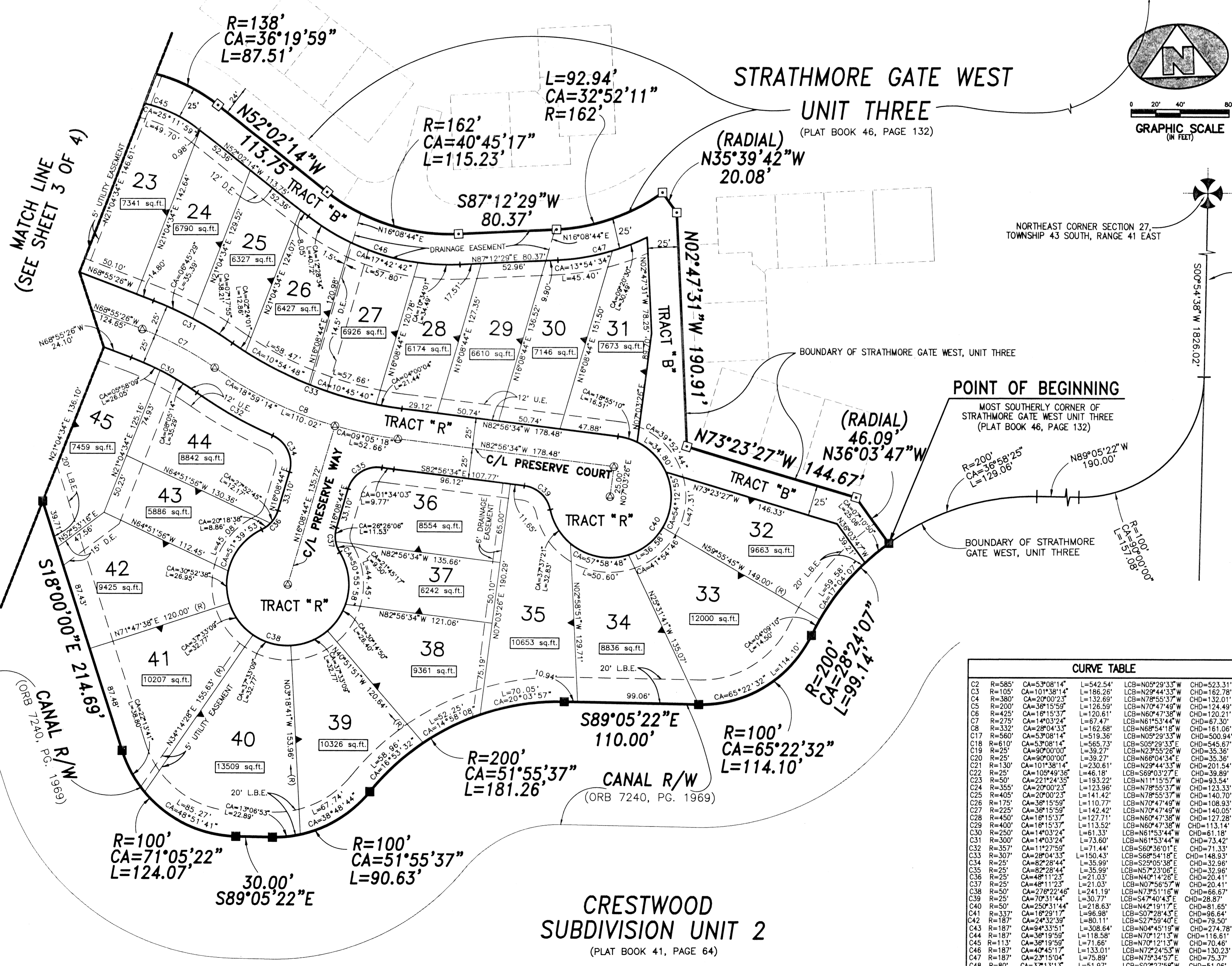


LYING IN THE NORTHEAST CORNER SECTION 27, TOWNSHIP 43 SOUTH, RANGE 41 EAST, VILLAGE OF ROYAL PALM BEACH, PALM BEACH COUNTY, FLORIDA AND BEING A REPLAT OF TRACT 'D' AND A PORTION OF TRACT 'A', STRATHMORE GATE-WEST, UNIT ONE, RECORDED IN PLAT BOOK 41, PAGE 164, PUBLIC RECORDS, PALM BEACH COUNTY, FLORIDA



SHEET INDEX (NOT TO SCALE)

LEGEND:

- List of symbols and abbreviations used on the map, such as L.M.E., R., C/L, U.E., D.E., D.B., L.A.E., L.B.E., R, L, CA, CB, CD, POB, POC, ORB, P.B., P.G., R/W, and various monument symbols.

SURVEYOR'S NOTES:

- Four numbered notes providing details about the base bearing, utility structures, monumenting, and the instrument's preparation.

Table with columns for Curve Number, Radius (R), Central Angle (CA), Length (L), and Chord Distance (CHD). It lists data for curves C2 through C48.

CRESTWOOD SUBDIVISION UNIT 2 (PLAT BOOK 41, PAGE 64)

BENCH MARK LAND SURVEYING & MAPPING, INC. logo and contact information including address, phone, and email.

RECORD PLAT OF PRESERVE AT CRESTWOOD

Small table with columns: DWN, HERMIE, FB, DATE, WO.#, P255, CKD, FILE, SCALE, SHEET 2 OF 4.