

MIRASOL PARCEL NINE

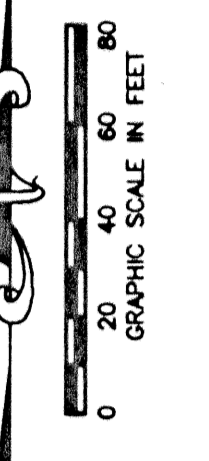
PART OF GOLF DIGEST P.C.D.
 SECTIONS 32 AND 33, TOWNSHIP 41 SOUTH, RANGE 42 EAST AND
 SECTIONS 4 AND 5, TOWNSHIP 42 SOUTH, RANGE 42 EAST,
 CITY OF PALM BEACH GARDENS,
 PALM BEACH COUNTY, FLORIDA
 SHEET 5 OF 5

STATE OF FLORIDA
 COUNTY OF PALM BEACH

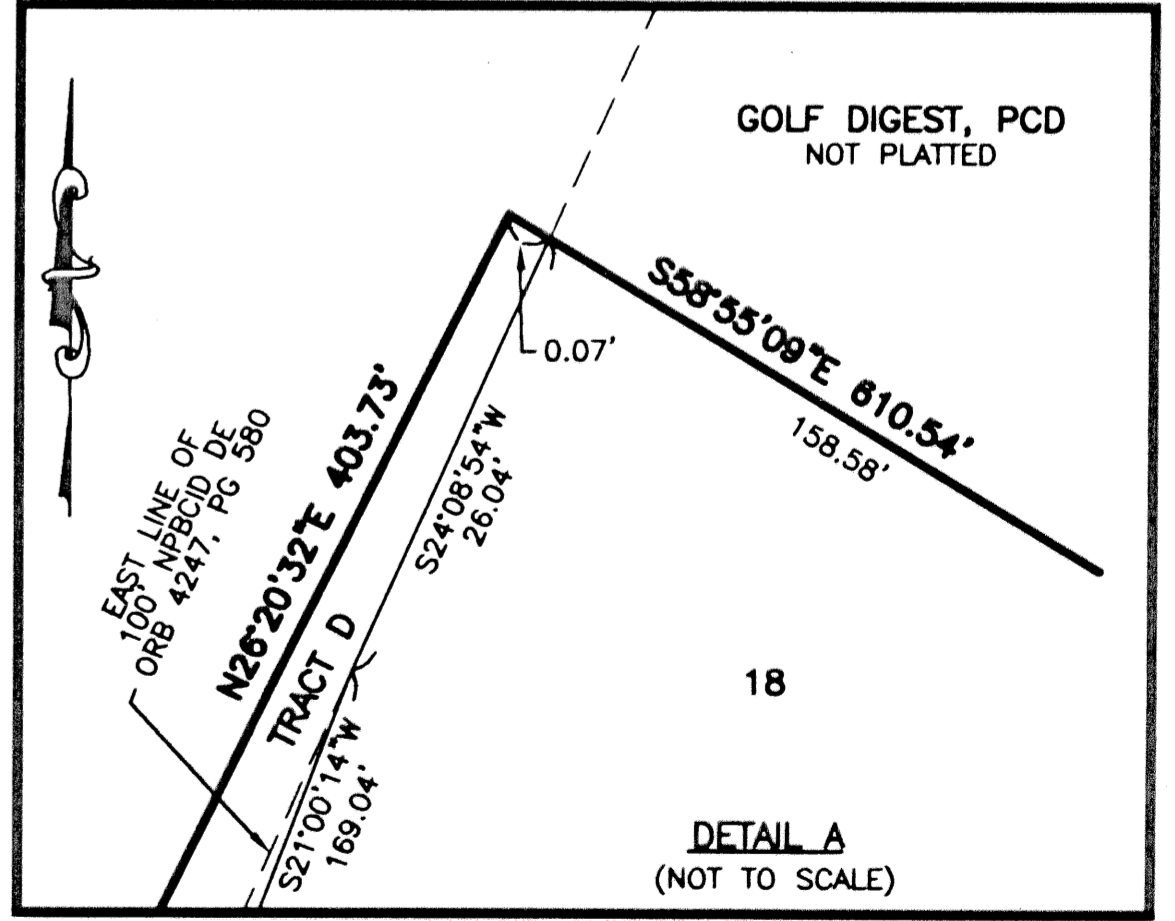
THIS PLAT WAS FILED FOR
 RECORD _____ DAY OF _____
 AD, 2002 AND DULY RECORDED
 IN PLAT BOOK _____ ON PAGES
 _____ AND _____

DOROTHY H. WILKEN, CLERK
 BY: _____, D.C.

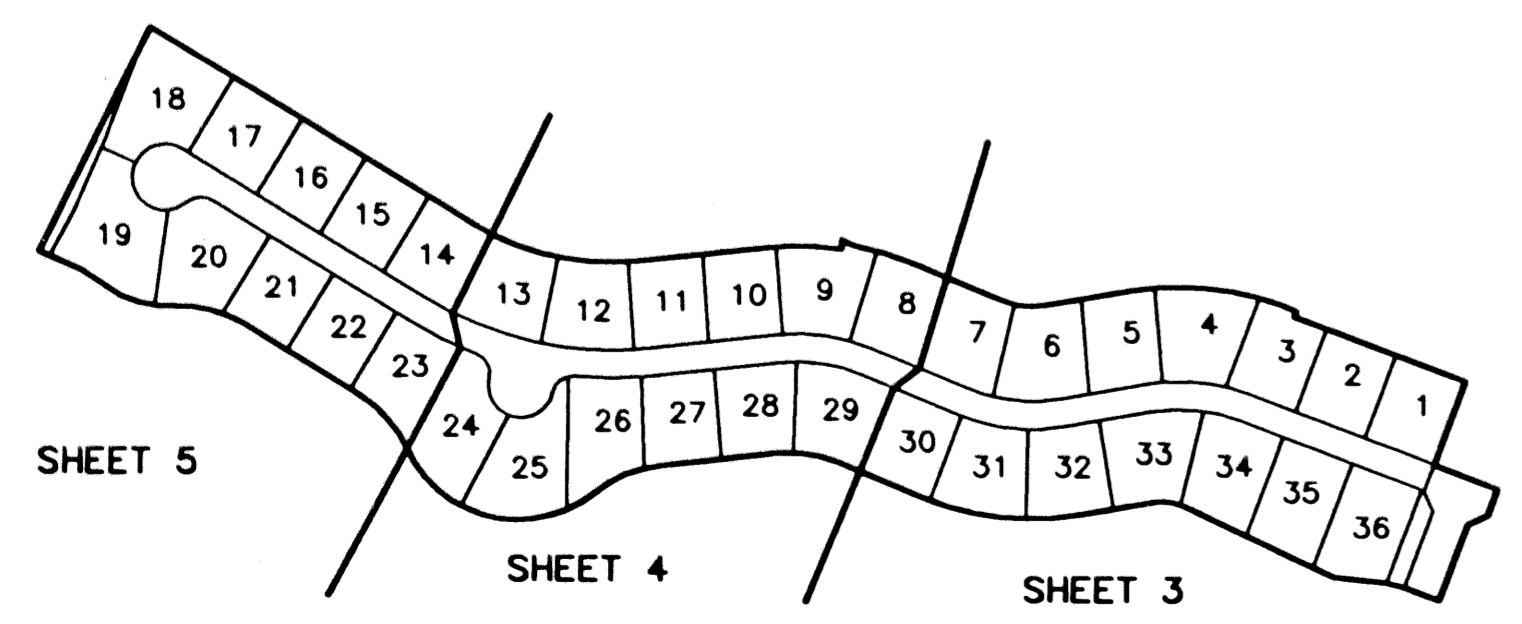
CIRCUIT COURT SEAL



- LEGEND**
- Δ CENTRAL (DELTA) ANGLE
 - CH CHORD
 - DE DRAINAGE EASEMENT
 - IEE INGRESS-EGRESS EASEMENT
 - FPL FLORIDA POWER AND LIGHT
 - L ARC LENGTH
 - NPBCID NORTHERN PALM BEACH COUNTY IMPROVEMENT DISTRICT
 - (NR) NON-RADIAL
 - ORB OFFICIAL RECORD BOOK
 - PAE PEDESTRIAN ACCESS EASEMENT
 - PB PLAT BOOK
 - PG(S) PAGE(S)
 - PCD PLANNED COMMUNITY DEVELOPMENT
 - R RADIUS
 - UE UTILITY EASEMENT
 - PERMANENT REFERENCE MONUMENT FOUND LB 048 (4"x4" CONCRETE)
 - PERMANENT REFERENCE MONUMENT SET LB 048 (4"x4" CONCRETE)
 - PERMANENT CONTROL POINT SET LB 048
 - CL CENTERLINE
 - CT CURVE TABLE REFERENCE



CURVE TABLE				
CURVE	RADIUS	CENTRAL ANGLE	ARC LENGTH	CHORD
C1	577.50'	37°05'29"	373.85'	S77°27'53"E 367.36'
C2	600.00'	37°05'29"	388.42'	N77°27'53"W 381.67'
C3	622.50'	10°59'19"	119.39'	N64°24'48"W 119.21'



SHEET LOCATION MAP
 NOT TO SCALE

THIS INSTRUMENT WAS PREPARED BY MARY HANNA CLODFELTER, P.S.M. IN THE OFFICES OF MOCK, ROOS & ASSOCIATES, INC., 5720 CORPORATE WAY, WEST PALM BEACH, FLORIDA 33407.

SCALE:
 1"=40'
 P.A. NO.:
 99362.00
 DATE:
 NOVEMBER, 2001
 DRAWING NO.
 41-42-32-53

FLORIDA L.B. NO. 48

MOCK ROOS
 ENGINEERS SURVEYORS PLANNERS

5720 Corporate Way, West Palm Beach, Florida 33407
 (561) 683-3113, fax 478-7248

MIRASOL PARCEL NINE
 PART OF GOLF DIGEST P.C.D.
 SITUATE IN SECTIONS 32 AND 33,
 TOWNSHIP 41 SOUTH, RANGE 42 EAST,
 AND IN SECTIONS 4 AND 5,
 TOWNSHIP 42 SOUTH, RANGE 42 EAST,
 CITY OF PALM BEACH GARDENS,
 PALM BEACH COUNTY, FLORIDA

S:\lay\layp009\lpc09\p02.dwg 03/26/02 10:51:09 AM EST

REV.: 02-05-02
 CAD FILE:
 TAYLPA07\PA07RP02