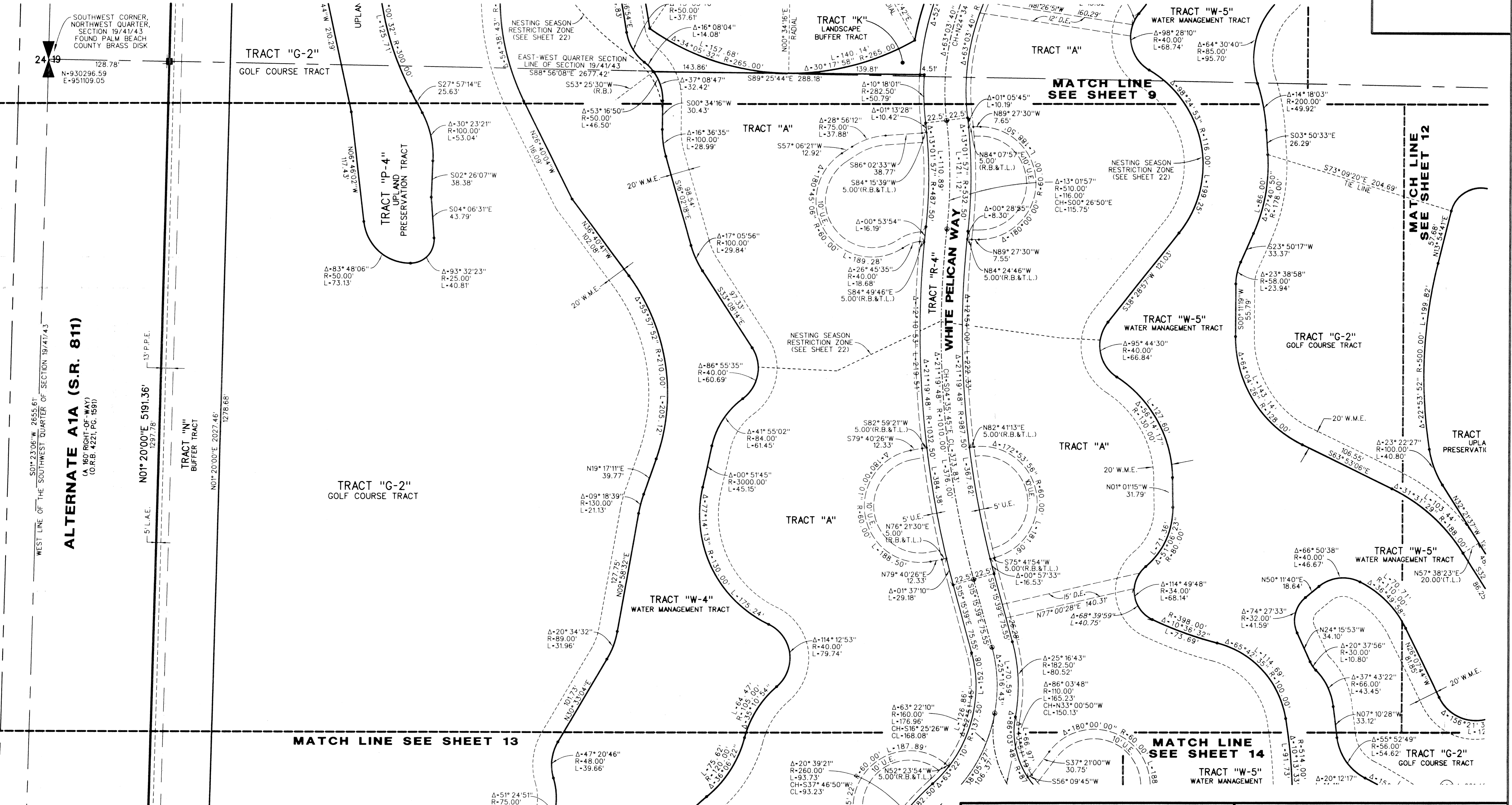
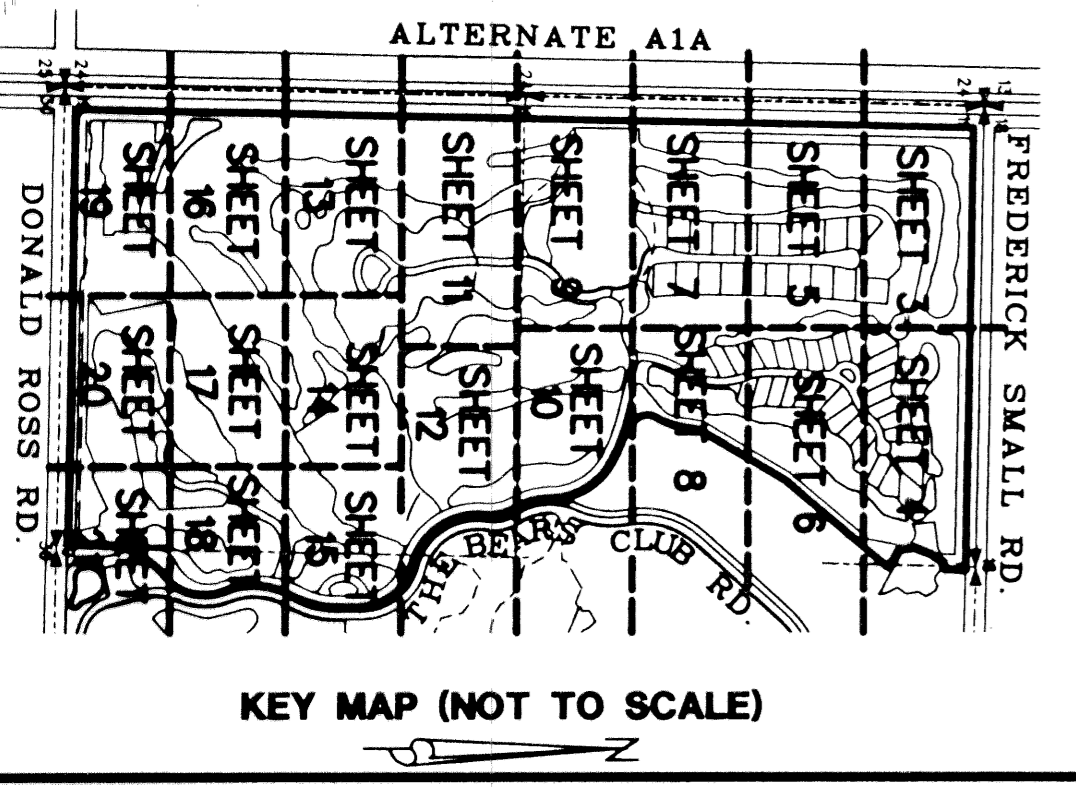
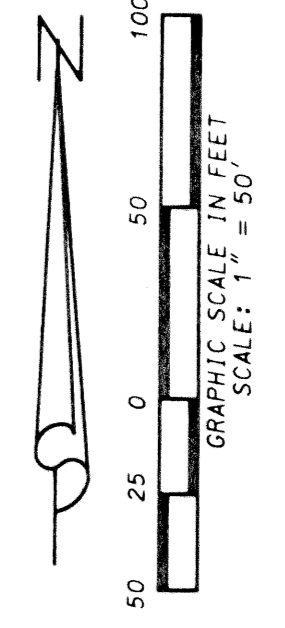


# RITZ-CARLTON GOLF CLUB & SPA, JUPITER, A P.U.D.

SITUATE IN SECTION 19, TOWNSHIP 41 SOUTH, RANGE 43 EAST, TOWN OF JUPITER, PALM BEACH COUNTY, FLORIDA  
DECEMBER, 2001  
SHEET 11 OF 22



SOUTHWEST CORNER, NORTHWEST QUARTER, SECTION 19/41/43 FOUND PALM BEACH COUNTY BRASS DISK  
N-930296.59  
E-951109.05

WEST LINE OF THE SOUTHWEST QUARTER OF SECTION 19/41/43  
**ALTERNATE A1A (S.R. 811)**  
(A 160' RIGHT-OF-WAY) (O.R.B. 4221, PG. 1591)  
S01°23'06"W 2655.61'  
N01°20'00"E 5191.36'  
13' P.P.E.  
1297.78'  
5' L.A.E.  
N01°20'00"E 2027.46'  
1278.68'

**LIDBERG LAND SURVEYING, INC.**  
LB4431  
675 West Indian Town Road, Suite 200,  
Jupiter, Florida 33458 TEL. 561-746-8454

CAD. K:\UST \194143 \RITZ \1690306 \SHEET11.DGN		JOB 00-169-306	
REF. K:\UST \194143 \RITZ \1690306 \1690306.DGN		DATE 04/28/01	
FLD. -	FB. PG.	DWG. D00-169P	
OFF. R.W.	-	SHEET 11 OF 22	
CKD. D.C.L.	-	-	