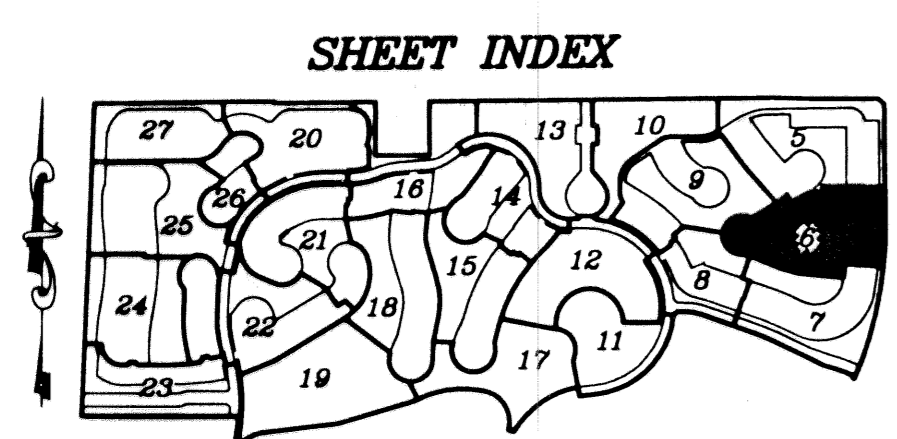
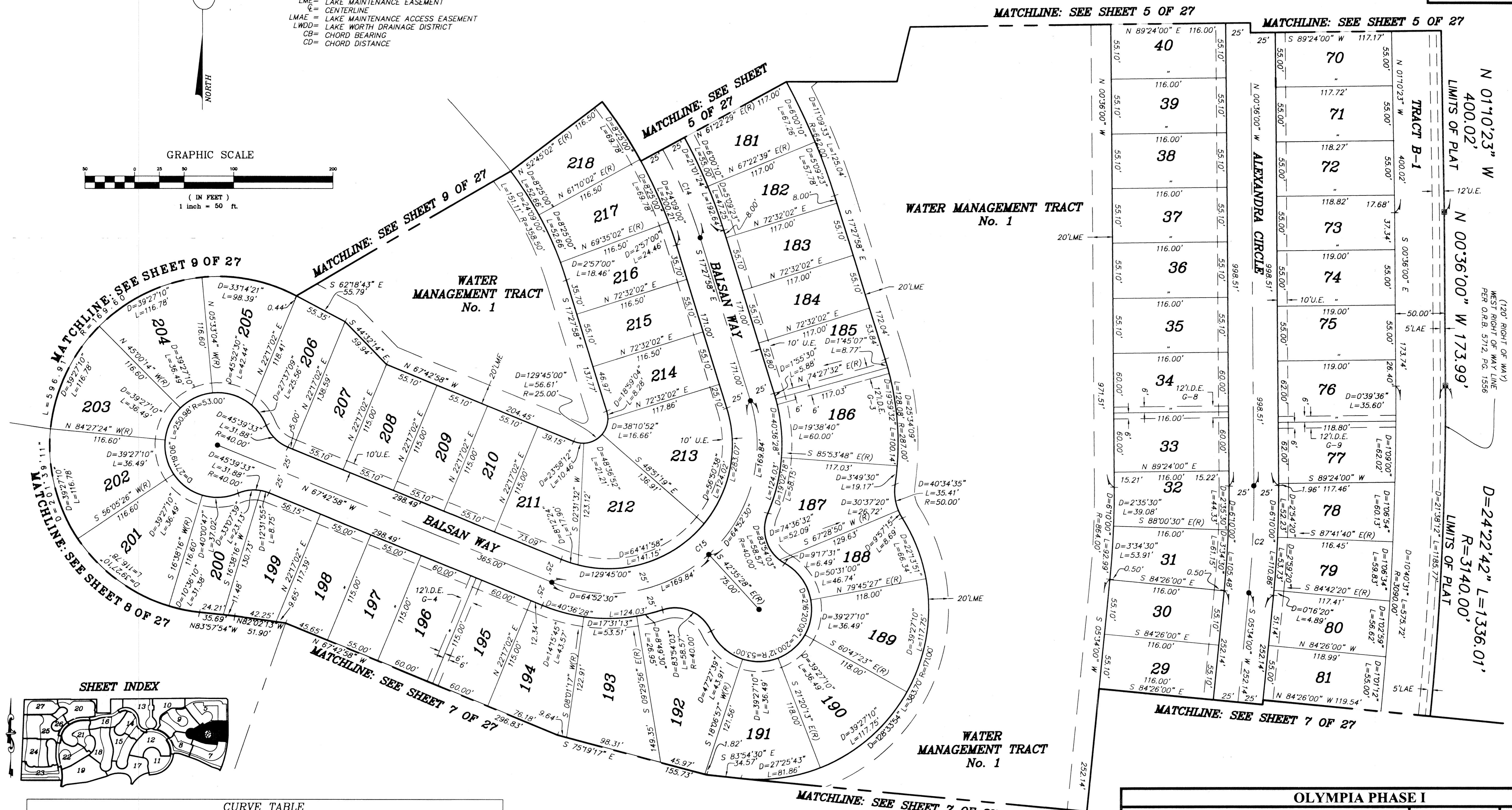
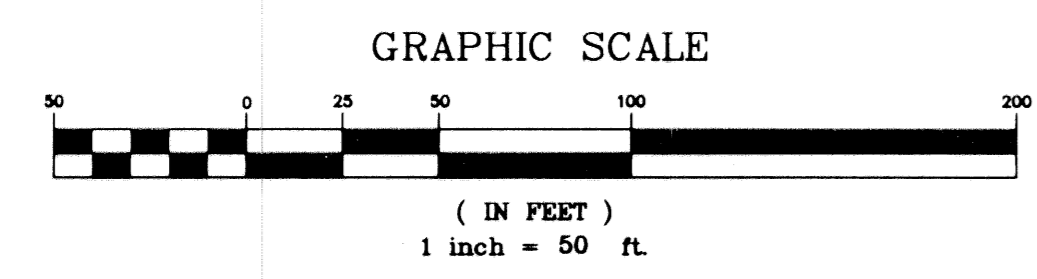


**OLYMPIA PHASE I**  
 BEING A REPLAT OF A PORTION OF BLOCKS 16, 17, 19 AND 20 OF PALM BEACH FARMS  
 COMPANY PLAT No. 3, AS RECORDED IN PLAT BOOK 2, PAGES 45 THROUGH 54 OF THE PUBLIC  
 RECORDS OF PALM BEACH COUNTY FLORIDA. IN PART OF SECTIONS 7, 8, 17, 18, 19 AND 20,  
 TOWNSHIP 44 SOUTH, RANGE 42 EAST, VILLAGE OF WELLINGTON, PALM BEACH COUNTY, FLORIDA  
 SHEET 6 OF 27  
 JANUARY 2002

**LEGEND:**  
 D= DELTA (CENTRAL ANGLE)  
 L= LENGTH  
 R= RADIUS  
 PSM= PROFESSIONAL SURVEYOR AND MAPPER  
 PLS= PROFESSIONAL LAND SURVEYOR  
 LAE= LIMITED ACCESS EASEMENT  
 MREE= MAINTENANCE ROOF AND EAVES EASEMENT  
 UE= UTILITY EASEMENT  
 DE NO. 1= DRAINAGE EASEMENT NUMBER 1  
 IDE G-1= INTERIOR DRAINAGE EASEMENT POD G-1  
 WMT= WATER MANAGEMENT TRACT  
 ORB= OFFICIAL RECORD BOOK  
 P.B.= PLAT BOOK  
 PG.= PAGE  
 (R)= RADIAL  
 ⊕= PERMANENT REFERENCE MONUMENT "LB 4318"  
 (UNLESS OTHERWISE NOTED)  
 ●= PERMANENT CONTROL POINT "LB 4318"  
 LME= LAKE MAINTENANCE EASEMENT  
 CENTERLINE  
 LMAE= LAKE MAINTENANCE ACCESS EASEMENT  
 LWDD= LAKE WORTH DRAINAGE DISTRICT  
 CB= CHORD BEARING  
 CD= CHORD DISTANCE



CURVE	DELTA	LENGTH	RADIUS	CHORD BEARING	CHORD DISTANCE
C2	67°0'00"	108.17	1005.00'	N02°29'00"E	108.11
C14	24°09'00"	210.75	500.00'	N29°32'28"W	209.19
C15	129°45'00"	339.68	150.00'	N47°24'32"E	271.62

<b>OLYMPIA PHASE I</b>		SHEET NO.	SCALE: 1"=50'
		<b>6</b>	DATE: JANUARY 2002
<b>NICK MILLER, INC.</b> Surveying & Mapping Consultants SUITE 105 2560 RCA BLVD. PALM BEACH GARDENS, FLORIDA 33410 TEL 561 627-5200 FAX 561 627-0983 D.B.P.R. LICENSED BUSINESS No. 4318			JOB NO. 1008.01
			FILE: 1008.01