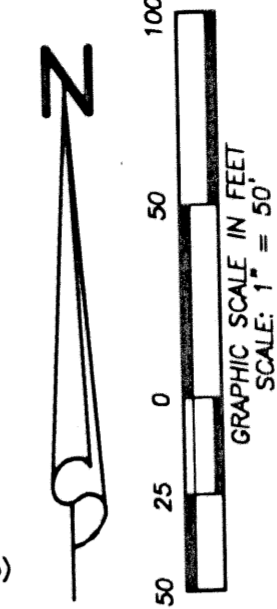
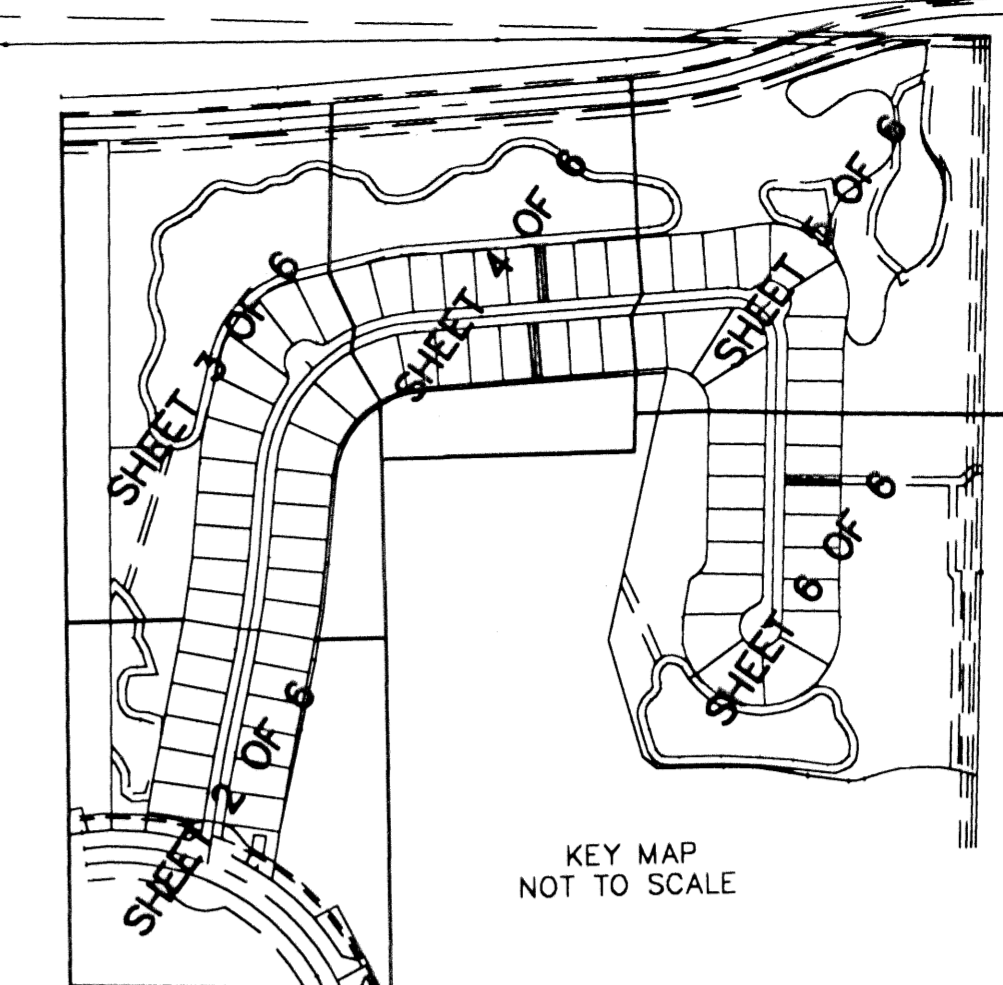


STATE OF FLORIDA
 COUNTY OF PALM BEACH
 THIS PLAT WAS FILED FOR
 RECORD AT _____ M.
 THIS _____ DAY OF _____
 A.D. 2001 AND DULY RECORDED
 IN PLAT BOOK _____ ON
 PAGES _____ AND _____

DOROTHY H. WILKEN
 CLERK CIRCUIT COURT

BY: _____
 DEPUTY CLERK



FND IRC
 "WSC LB#4469"
 RESET 4"x4"
 CONC MONUMENT
 LB#7055 182
 (PB 43, PG 115)

RELEASED
 60' VIEWED & POSTED R.O.W.
 (MCCB 3, PG 522)
 183
 (PB 43, PG 115)

CURVE	RADIUS	DELTA	LENGTH
C48	282.80	11°33'15"	57.03
C50	40.00	92°52'24"	90.77
C52	40.00	65°44'27"	45.90
C53	100.00	15°28'05"	27.00
C72	20.00	51°35'33"	18.01
C73	106.17	22°44'03"	42.13
C74	667.00	4°55'05"	57.25
C75	37.18	33°45'16"	21.90
C76	238.31	20°15'12"	84.24
C77	295.00	5°25'35"	27.94
C79	13.00	123°05'14"	27.93
C81	381.00	7°54'45"	52.62
C82	89.80	29°04'49"	45.58
C83	25.00	93°03'49"	40.61
C84	36.00	79°10'28"	49.75
C85	521.00	6°15'48"	56.95
C86	566.96	10°55'49"	108.16
C87	1025.00	4°25'45"	79.24
C89	17.00	99°25'18"	29.50
C90	70.00	120°44'37"	147.52
C92	97.00	60°46'11"	99.28
C93	122.15	53°35'08"	114.24
C94	125.00	77°35'19"	169.27
C95	706.95	4°43'11"	58.23
C96	56.65	61°47'18"	61.09
C97	30.00	80°26'01"	42.11
C98	75.00	35°58'32"	47.09
C99	82.00	59°27'35"	85.10
C101	185.46	29°06'03"	94.19
C102	100.00	31°08'59"	54.37
C103	155.94	32°13'05"	87.69

LINE	BEARING	LENGTH
L19	S29°10'38"E	43.60
L20	N09°48'13"E	60.16
L21	N06°56'32"W	62.57
L22	S07°18'58"E	18.71
L23	S07°18'58"E	38.13
L24	S00°00'00"E	47.52
L25	S01°49'17"W	61.13
L26	S07°36'14"W	14.68
L27	S34°25'04"W	44.67
L28	S31°27'51"W	20.47
L30	S22°34'12"W	58.25
L31	S04°56'03"W	56.46
L32	S32°30'26"E	50.60
L33	S47°25'35"E	32.97
L34	S49°16'48"E	25.69
L35	S14°03'13"E	8.00
L36	N58°01'47"E	18.32
L37	N61°13'29"E	22.16
L38	N47°31'45"E	15.80
L39	N43°18'16"E	22.65
L40	N29°46'46"E	23.46
L41	N14°38'27"E	23.05
L42	N14°20'28"E	47.05
L43	N08°32'33"E	39.23
L44	N01°21'56"E	40.74
L45	N07°36'14"E	14.68
L46	N20°47'52"W	30.08
L47	N30°12'59"W	23.12
L48	N32°02'34"W	27.46
L49	N23°13'35"W	22.16
L50	N09°06'06"W	24.55
L51	N01°38'19"E	33.96
L52	N05°43'03"E	38.99
L53	N06°10'16"E	53.79
L54	S65°40'04"W	56.49
L55	S25°56'16"W	37.74
L56	N44°57'19"W	47.17
L57	S14°19'44"W	65.78
L58	S03°23'11"E	50.31
L59	S57°32'00"W	77.86
L60	N05°22'41"E	54.05
L61	S20°12'20"E	66.60
L62	S55°52'12"W	85.53
L64	S01°27'43"W	23.37
L65	S41°21'13"W	19.03

- LEGEND:**
- CL = CENTERLINE
 - WSE = WATER AND SEWER EASEMENT
 - PBCO = PALM BEACH COUNTY
 - LAE = LIMITED ACCESS EASEMENT
 - LBE = LANDSCAPE BUFFER EASEMENT
 - LME = LAKE MAINTENANCE EASEMENT
 - LSE = LIFT STATION EASEMENT
 - (C) = CALCULATED
 - (M) = MEASURED
 - CMB = COMMISSIONERS' MINUTES BOOK
 - DE = DRAINAGE EASEMENT
 - DB = DEED BOOK
 - FND = FOUND
 - FPL = FLORIDA POWER & LIGHT
 - IP = IRON PIPE
 - IRC = IRON ROD WITH PLASTIC CAP
 - LB = LICENSED BUSINESS
 - LS = LICENSED SURVEYOR
 - (M) = MEASURED
 - MCCB = MINUTES OF THE COUNTY COMMISSIONER'S BOOK
 - MON = MONUMENT
 - ORB = OFFICIAL RECORD BOOK
 - (P) = PLAT
 - PB = PLAT BOOK
 - PG = PAGE
 - POB = POINT OF BEGINNING
 - POC = POINT OF COMMENCEMENT
 - PRM = PERMANENT REFERENCE MONUMENT
 - PSUE = PRIVATE NON-EXCLUSIVE EASEMENT
 - R/W = RIGHT-OF-WAY
 - RPB = ROAD PLAT BOOK
 - SUA = SEACOAST UTILITY EASEMENT
 - (S) = SURVEY
 - UE = UTILITY EASEMENT
 - WBE = WETLAND BUFFER EASEMENT
 - (P) = PERMANENT CONTROL POINT "LB#7055"
 - (M) = SET 4"x4" CONCRETE MONUMENT "LB#7055"

FRENCHMAN'S RESERVE PCD - PLAT "D"

BEING A REPLAT OF TRACT D, FRENCHMAN'S RESERVE PCD - PLAT ONE
 AS RECORDED IN PLAT BOOK 92, PAGES 11-20,
 IN PALM BEACH COUNTY, FLORIDA

LYING IN SECTION 31,
 TOWNSHIP 41 SOUTH, RANGE 43 EAST, CITY OF PALM BEACH
 GARDENS, PALM BEACH COUNTY, FLORIDA.

JANUARY, 2002 SHEET 5 OF 6

Wantman Group, Inc.
 Engineering ♦ Surveying ♦ Mapping
 901 NORTHPOINT PARKWAY, SUITE 204
 WEST PALM BEACH, FL 33407
 (561) 687-2220 phone (561) 687-1110 fax
 CERT NO. 6091 - LB No. 7055

CAD	K:\TOLLBROS\FRENCHMAN\DWG\218PLATD		
REF	K:\TOLLBROS\FRENCHMAN\DWG\218MG01		
FLD	RP/AB	FB. 000 PG. 00	JOB 218D
OFF	AJP/MRJ		DATE 8/20/01
CKD	RBP	SHEET 5 OF 6	DWG



MATCHLINE SHEET 4 OF 6

MATCHLINE SHEET 6 OF 6