

FRENCHMAN'S RESERVE PCD - PLAT "D"

BEING A REPLAT OF TRACT D, FRENCHMAN'S RESERVE PCD - PLAT ONE
AS RECORDED IN PLAT BOOK 92, PAGES 11-20,
IN PALM BEACH COUNTY, FLORIDA

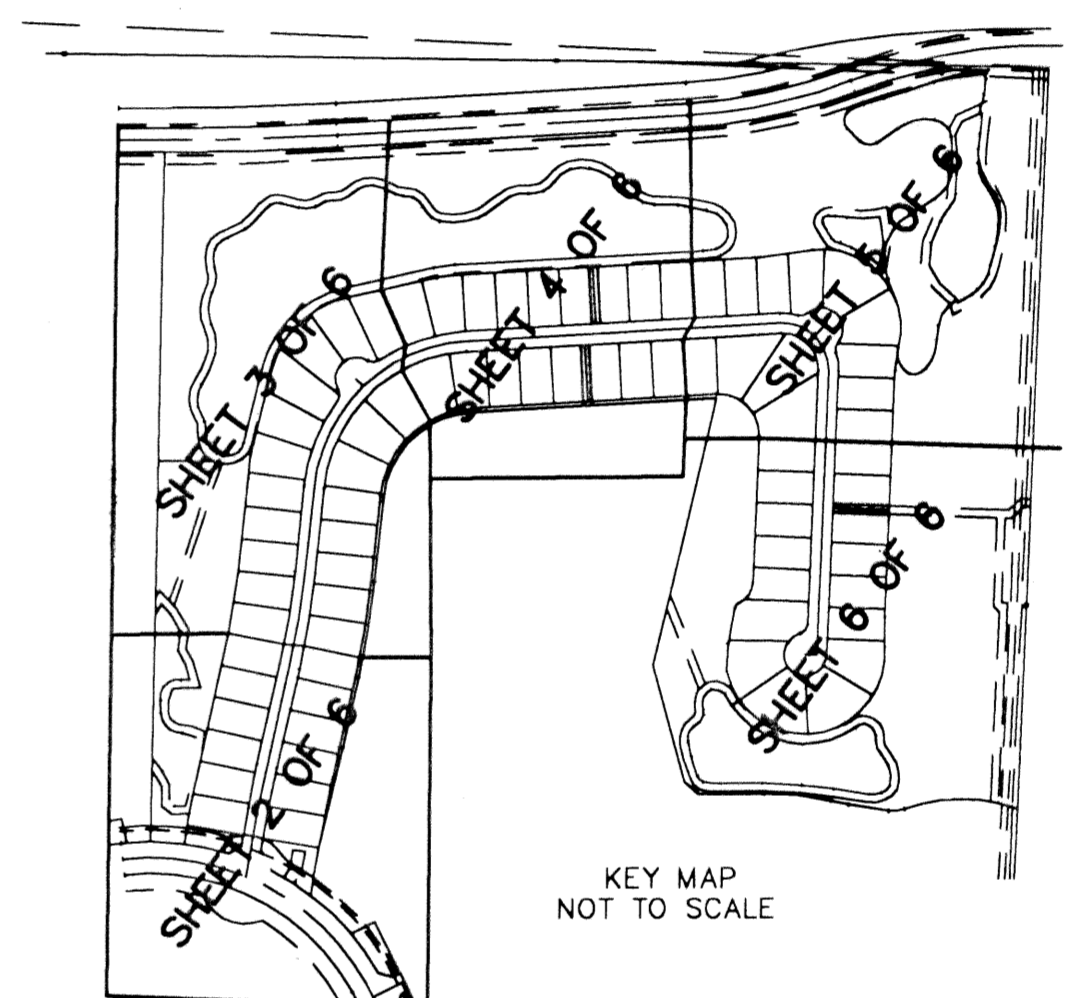
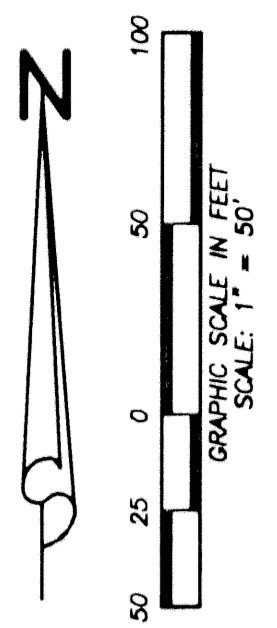
LYING IN SECTION 31,
TOWNSHIP 41 SOUTH, RANGE 43 EAST, CITY OF PALM BEACH
GARDENS, PALM BEACH COUNTY, FLORIDA.

JANUARY, 2002 SHEET 4 OF 6

STATE OF FLORIDA
COUNTY OF PALM BEACH
THIS PLAT WAS FILED FOR
RECORD AT _____ M.
THIS _____ DAY OF _____
A.D. 2001 AND DULY RECORDED
IN PLAT BOOK _____ ON
PAGES _____ AND _____

DOROTHY H. WILKEN
CLERK CIRCUIT COURT

BY: _____
DEPUTY CLERK



CURVE	RADIUS	DELTA	LENGTH
C26	44.00	46°38'47"	35.82
C28	50.00	78°44'54"	68.72
C31	40.00	57°29'39"	40.14
C32	176.08	35°17'57"	108.48
C33	60.00	19°03'56"	19.97
C34	441.80	8°35'17"	66.22
C35	78.00	40°39'43"	55.36
C37	60.00	66°16'47"	69.41
C39	90.00	88°21'51"	138.80
C42	320.50	15°11'09"	84.95
C44	95.00	44°06'51"	73.14
C46	1133.32	2°54'51"	57.84
C47	60.00	17°30'39"	18.34

- LEGEND:**
- CL = CENTERLINE
 - WSE = WATER AND SEWER EASEMENT
 - PBCC = PALM BEACH COUNTY
 - LAC = LIMITED ACCESS EASEMENT
 - LBE = LANDSCAPE BUFFER EASEMENT
 - LME = LAKE MAINTENANCE EASEMENT
 - LSE = LIFT STATION EASEMENT
 - (C) = CALCULATED
 - CMB = COMMISSIONERS' MINUTES BOOK
 - DE = DRAINAGE EASEMENT
 - DB = DEED BOOK
 - FND = FOUND
 - FPL = FLORIDA POWER & LIGHT
 - IP = IRON PIPE
 - IRC = IRON ROD WITH PLASTIC CAP
 - LB = LICENSED BUSINESS
 - LS = LICENSED SURVEYOR
 - (M) = MEASURED
 - MCCB = MINUTES OF THE COUNTY COMMISSIONER'S BOOK
 - MON = MONUMENT
 - ORB = OFFICIAL RECORD BOOK
 - (P) = PLAT
 - PB = PLAT BOOK
 - PG = PAGE
 - POB = POINT OF BEGINNING
 - POC = POINT OF COMMENCEMENT
 - PRM = PERMANENT REFERENCE MONUMENT
 - PSUE = PRIVATE NON-EXCLUSIVE EASEMENT
 - R/W = RIGHT-OF-WAY
 - RFB = ROAD PLAT BOOK
 - SUA = SEACOAST UTILITY EASEMENT
 - (S) = SURVEY
 - UE = UTILITY EASEMENT
 - WBE = WETLAND BUFFER EASEMENT
 - = PERMANENT CONTROL POINT "LB#7055"
 - = SET 4"x4" CONCRETE MONUMENT "LB#7055"

Wantman Group, Inc.
Engineering ♦ Surveying ♦ Mapping
901 NORTHPOINT PARKWAY, SUITE 204
WEST PALM BEACH, FL 33407
(561) 687-2220 phone (561) 687-1110 fax
CERT No. 6091 - LB No. 7055

CAD	K:\TOLLBROS\FRENCHMAN\DWG\218PLATD		
REF	K:\TOLLBROS\FRENCHMAN\DWG\218MG01		
FLD	RP/AB	FB. 000 PG. 00	JOB 218D
OFF	AJP/MRJ		DATE 8/20/01
CKD	RBP	SHEET 4 OF 6	DWG