



CARNAHAN · PROCTOR · CROSS, INC.

CONSULTING ENGINEERS · SURVEYORS · PLANNERS

6101 WEST ATLANTIC BOULEVARD, MARGATE, FLORIDA 33063
PHONE: 954-972-3959 FAX: 954-972-4178

DEC. 2001

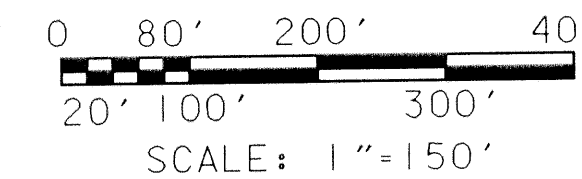
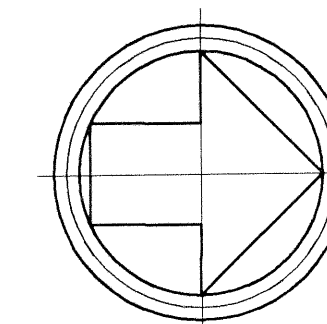
990901

JSH

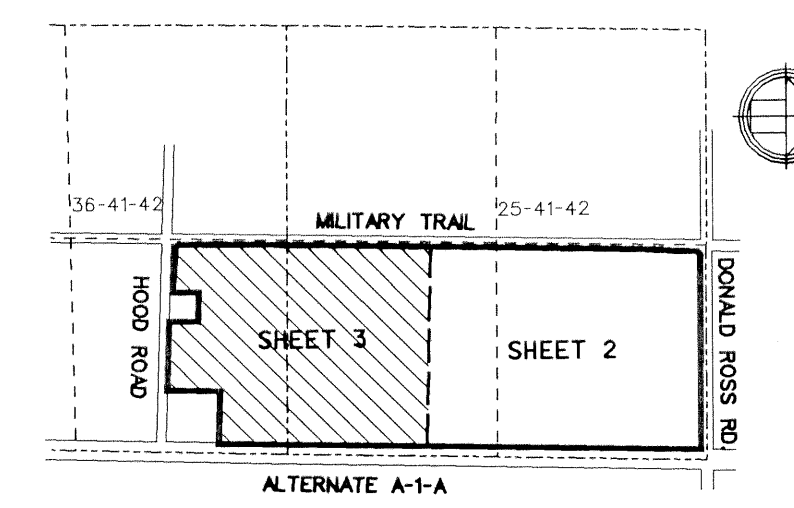
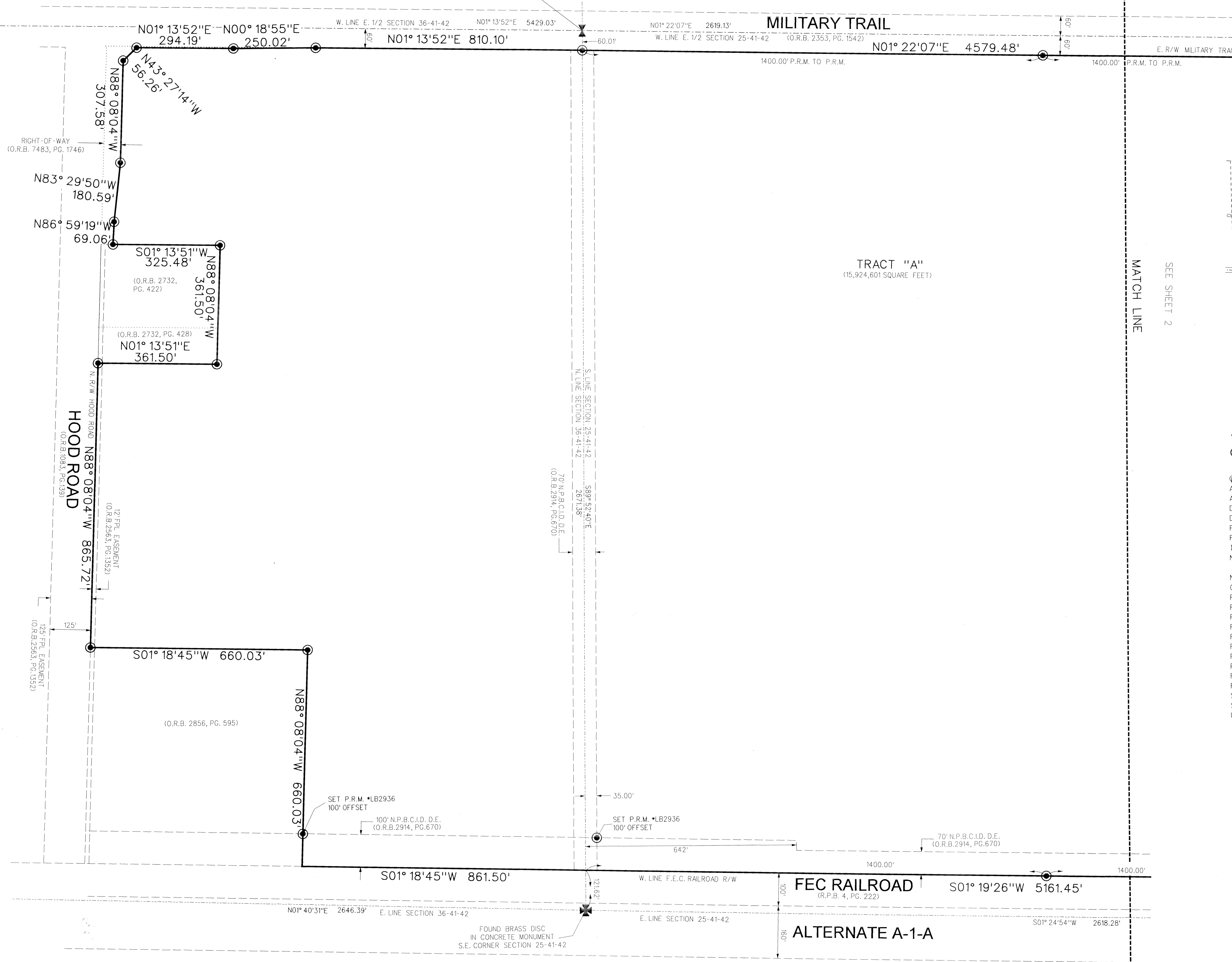
EVERGRENE

A PORTION OF THE EAST ONE-HALF OF SECTION 25, TOWNSHIP 41 SOUTH, RANGE 42 EAST,
TOGETHER WITH A PORTION OF THE NORTHEAST ONE-QUARTER OF SECTION 36, TOWNSHIP
41 SOUTH, RANGE 42 EAST, CITY OF PALM BEACH GARDENS, PALM BEACH COUNTY, FLORIDA

FOUND BRASS DISC
IN CONCRETE MONUMENT
S 1/4 CORNER
SECTION 25-41-42



SHEET 3 OF 3



- LEGEND:**
- SET PERMANENT REFERENCE MONUMENT (P.R.M.) •LB2936 UNLESS OTHERWISE NOTED
 - ⊙ CENTERLINE
 - A - ARC LENGTH
 - A.E. - ANCHOR EASEMENT
 - D - DELTA (CENTRAL ANGLE)
 - D.E. - DRAINAGE EASEMENT
 - F.E.C. - FLORIDA EAST COAST
 - FPL - FLORIDA POWER & LIGHT COMPANY
 - IEE - INGRESS EGRESS EASEMENT
 - N.P.B.C.I.D. - NORTHERN PALM BEACH COUNTY IMPROVEMENT DISTRICT
 - N.R. - NON-RADIAL
 - O.R.B. - OFFICIAL RECORDS BOOK
 - P.C.D. - PLANNED COMMUNITY DEVELOPMENT
 - P.O.B. - POINT OF BEGINNING
 - P.O.C. - POINT OF COMMENCEMENT
 - PG. - PAGE
 - P.B. - PLAT BOOK
 - P.B.C.R. - PALM BEACH COUNTY RECORDS
 - P.R.M. - PERMANENT REFERENCE MONUMENT
 - R - RADIUS
 - RPB - ROAD PLAT BOOK
 - R/W - RIGHT-OF-WAY
 - SF - SQUARE FEET
 - SUA - SEACOAST UTILITY AUTHORITY
 - U.E. - UTILITY EASEMENT

FILE: r:\990901\cadd\jsh\01pp3.dgn
DATE: 03-Jan-02 14:59