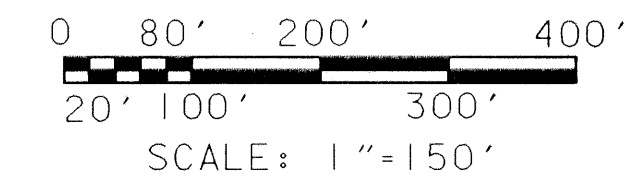
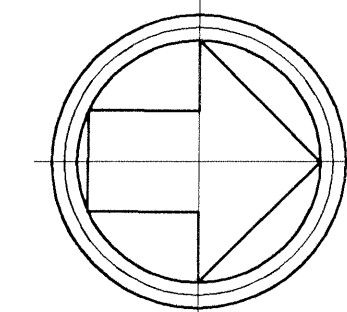
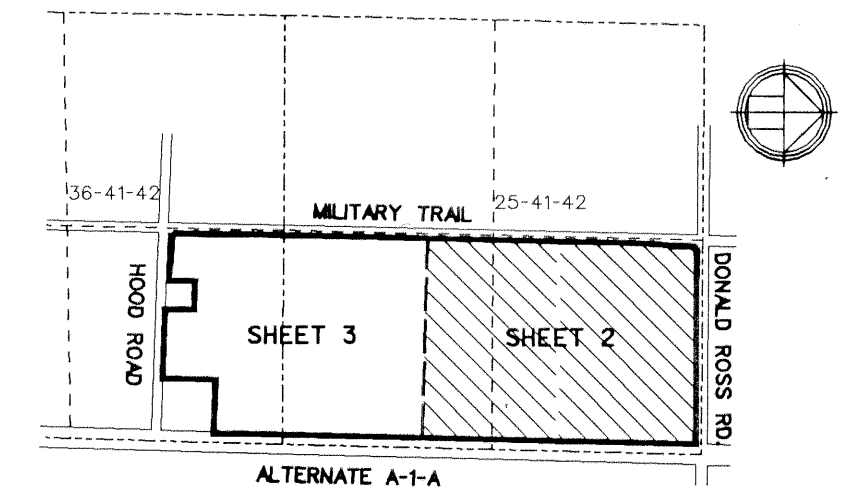


# EVERGRENE

A PORTION OF THE EAST ONE-HALF OF SECTION 25, TOWNSHIP 41 SOUTH, RANGE 42 EAST,  
 TOGETHER WITH A PORTION OF THE NORTHEAST ONE-QUARTER OF SECTION 36, TOWNSHIP  
 41 SOUTH, RANGE 42 EAST, CITY OF PALM BEACH GARDENS, PALM BEACH COUNTY, FLORIDA



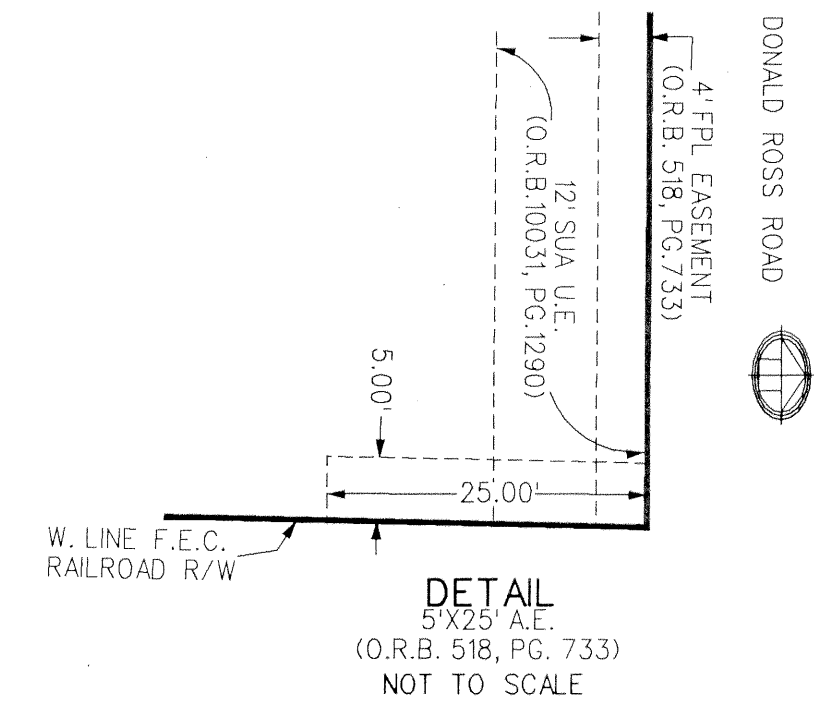
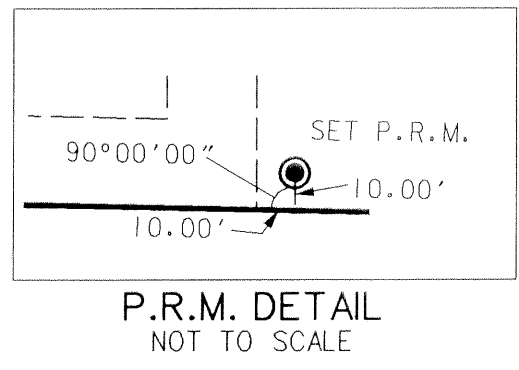
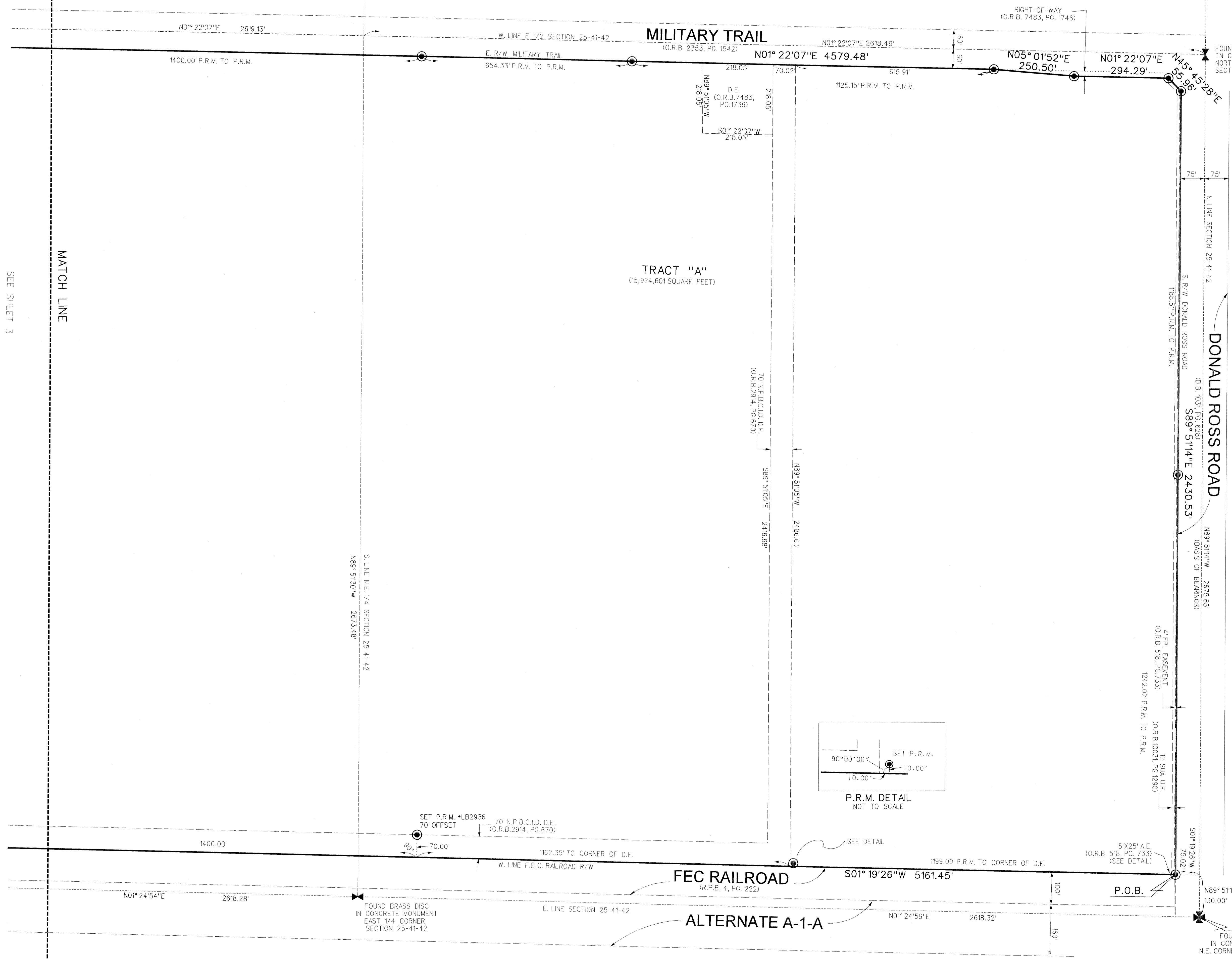
SHEET 2 OF 3



LOCATION SKETCH  
NOT TO SCALE

### LEGEND:

- SET PERMANENT REFERENCE MONUMENT (P.R.M.) • LB2936 UNLESS OTHERWISE NOTED
- ⊕ CENTERLINE
- A ARC LENGTH
- A.E. ANCHOR EASEMENT
- D DELTA (CENTRAL ANGLE)
- D.E. DRAINAGE EASEMENT
- F.E.C. FLORIDA EAST COAST
- FPL FLORIDA POWER & LIGHT COMPANY
- IEE INGRESS EGRESS EASEMENT
- N.P.B.C.I.D. NORTHERN PALM BEACH COUNTY IMPROVEMENT DISTRICT
- N.R. NON-RADIAL
- O.R.B. OFFICIAL RECORDS BOOK
- P.C.D. PLANNED COMMUNITY DEVELOPMENT
- P.O.B. POINT OF BEGINNING
- P.O.C. POINT OF COMMENCEMENT
- PG. PAGE
- P.B. PLAT BOOK
- P.B.C.R. PALM BEACH COUNTY RECORDS
- P.R.M. PERMANENT REFERENCE MONUMENT
- R RADIUS
- RPB ROAD PLAT BOOK
- R/W RIGHT-OF-WAY
- SF SQUARE FEET
- SUA SEACOAST UTILITY AUTHORITY
- U.E. UTILITY EASEMENT



MATCH LINE  
SEE SHEET 3