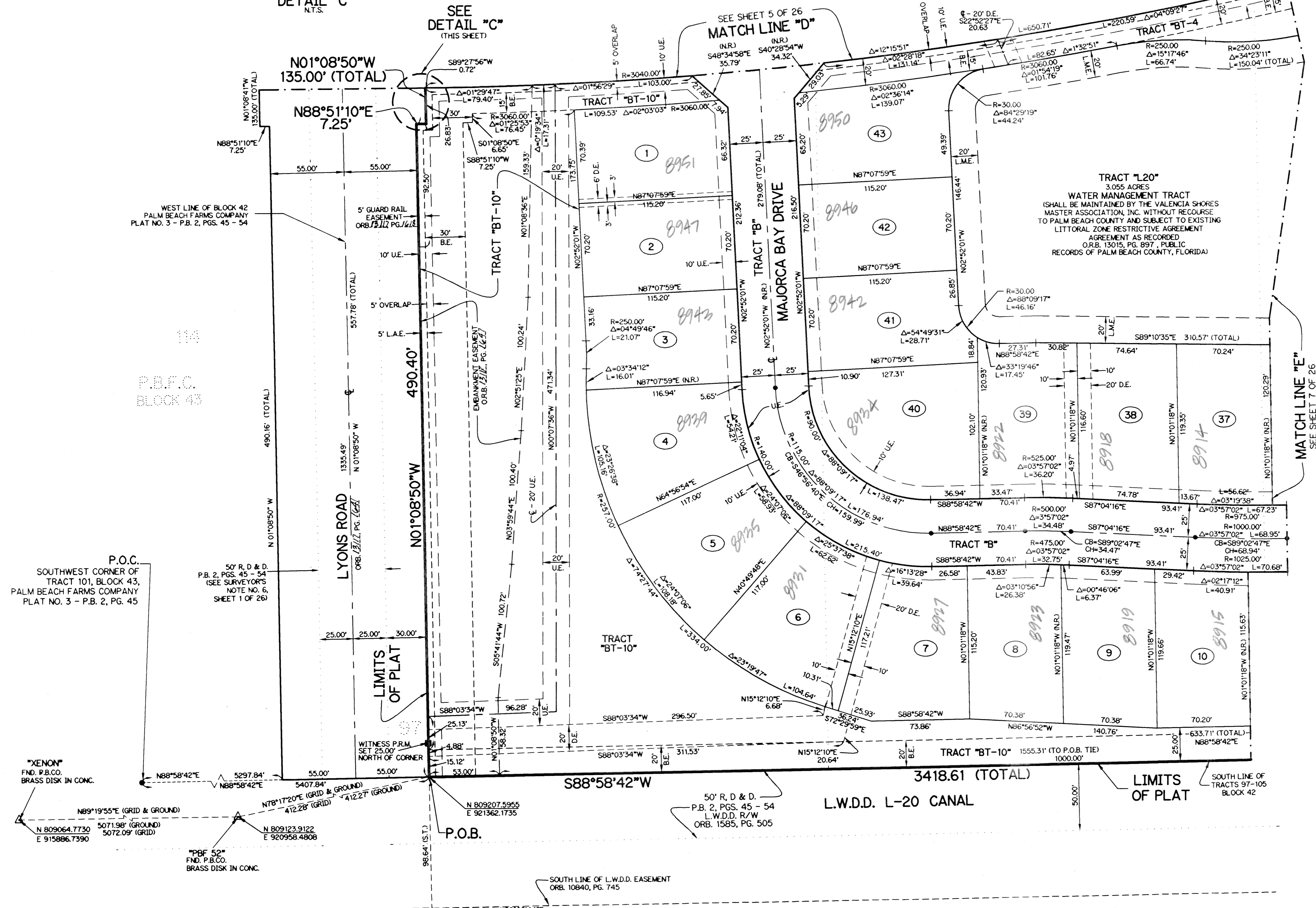
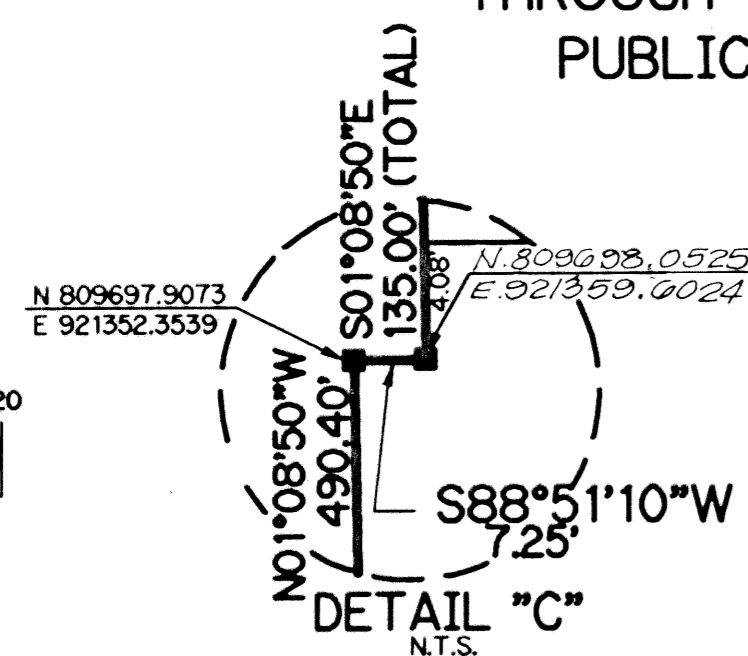
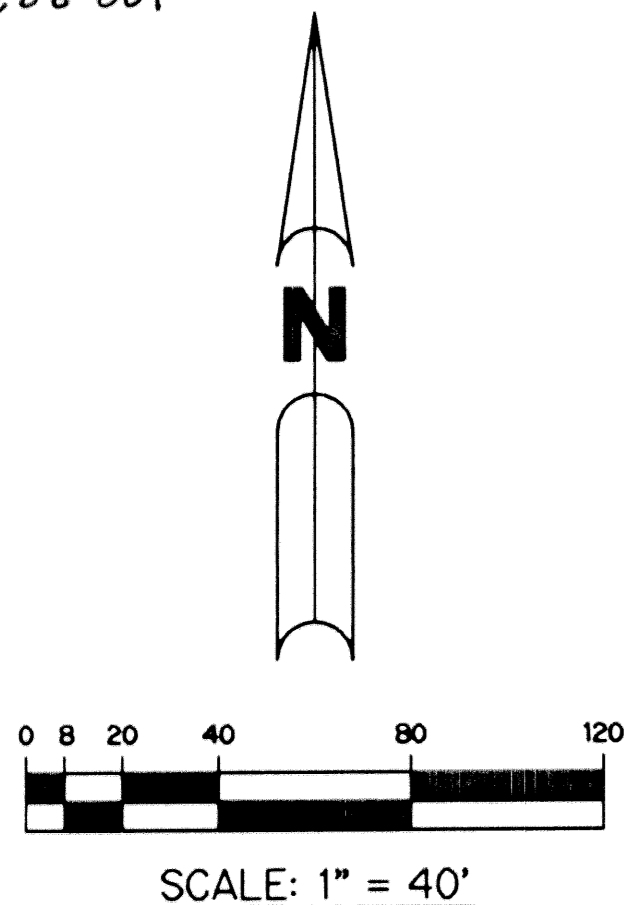


VALENCIA SHORES-PLAT ONE

BEING A REPLAT OF A PORTION OF TRACTS 60 THROUGH 69, 79, 88 AND 105 AND ALL OF TRACTS 70 THROUGH 78 AND TRACTS 89 THROUGH 104, BLOCK 42 PALM BEACH FARMS COMPANY PLAT NO. 3 AS RECORDED IN PLAT BOOK 2, PAGES 45 THROUGH 54 OF THE PUBLIC RECORDS OF PALM BEACH COUNTY, FLORIDA. LYING IN SECTIONS 7 AND 8, TOWNSHIP 45 SOUTH, RANGE 42 EAST, PALM BEACH COUNTY, FLORIDA

SHEET 6 OF 26 JUNE, 2001

THIS INSTRUMENT PREPARED BY
 PERRY C. WHITE, P.S.M. 4213, STATE OF FLORIDA
 LAWSON, NOBLE AND WEBB, INC., LB-6674
 ENGINEERS PLANNERS SURVEYORS
 420 COLUMBIA DRIVE, SUITE 110
 WEST PALM BEACH, FLORIDA

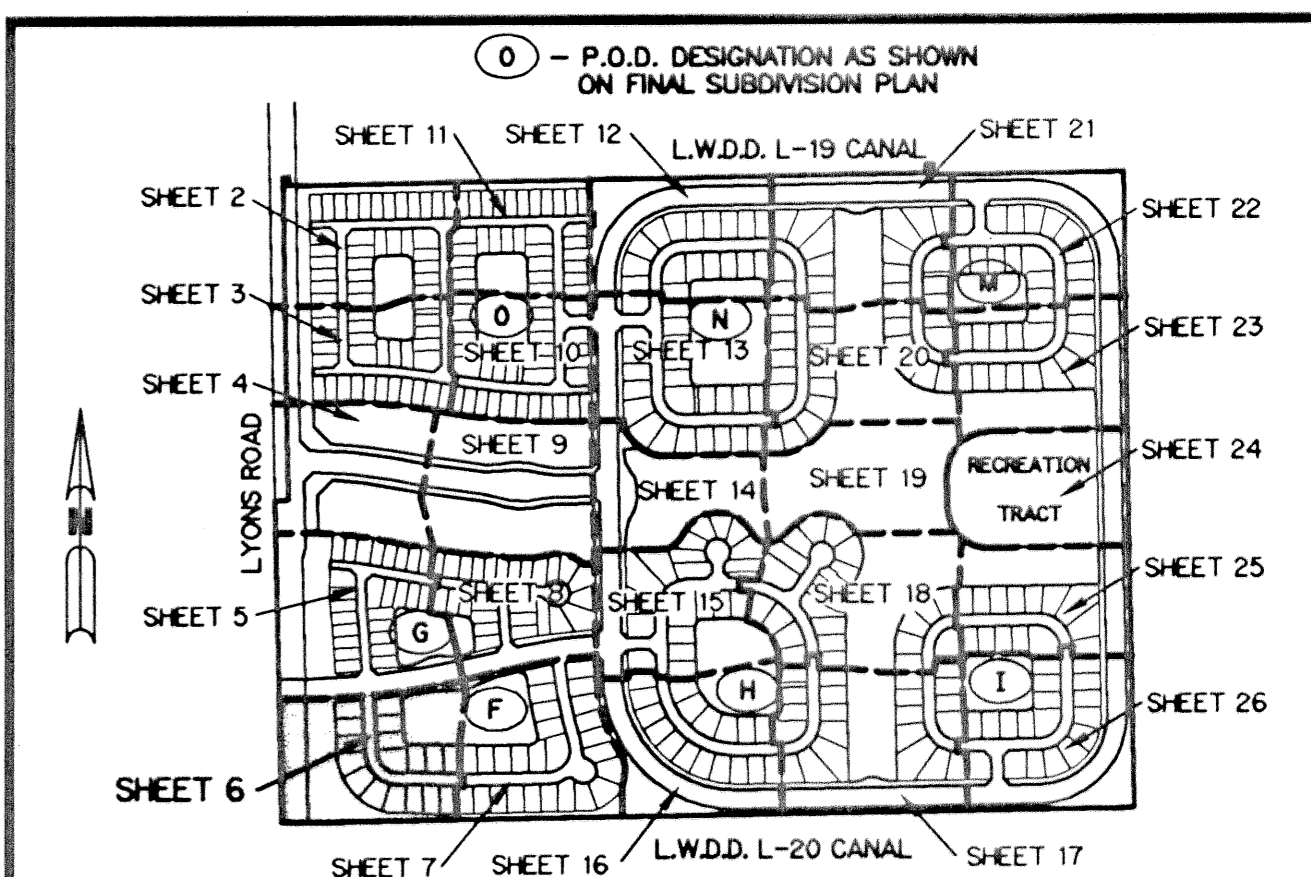


- LEGEND:**
- - SET PERMANENT REFERENCE MONUMENT, L.B. #6674
 - - FOUND PERMANENT REFERENCE MONUMENT, L.B. #6674
 - - SET PERMANENT CONTROL POINT, L.B. #6674
 - - FOUND PERMANENT CONTROL POINT, L.B. #6674
 - Δ - DELTA ANGLE
 - B.E. - BUFFER EASEMENT
 - CB - CHORD BEARING
 - CH - CHORD DISTANCE
 - CL - CENTERLINE
 - DB - DEED BOOK
 - DE - DRAINAGE EASEMENT
 - GRD. - GROUND
 - L - ARC LENGTH
 - L.A.E. - LIMITED ACCESS EASEMENT
 - L.M.E. - LAKE MAINTENANCE ACCESS EASEMENT
 - L.M.E. - LAKE MAINTENANCE EASEMENT
 - L.W.D.D. - LAKE WORTH DRAINAGE DISTRICT
 - NR. - NOT RADIAL
 - N.T.S. - NOT TO SCALE
 - O.E. - OVERHANG EASEMENT
 - O.R.B. - OFFICIAL RECORD BOOK
 - P.B. - PLAT BOOK
 - P.C. - POINT OF CURVATURE
 - P.C.P. - PERMANENT CONTROL POINT
 - P.D.E. - PRIVATE DRAINAGE EASEMENT
 - PGS. - PAGES
 - P.O.B. - POINT OF BEGINNING
 - P.O.C. - POINT OF COMMENCEMENT
 - P.S.M. - PROFESSIONAL SURVEYOR AND MAPPER
 - P.T. - POINT OF TANGENCY
 - R - RADIUS
 - RAD. - RADIAL
 - R.D. & D. - ROAD, DITCH & DYKE RESERVATION
 - R/W - PER P.B. 2, PG. 45 - 54
 - R/W - RIGHT-OF-WAY
 - SF. - SQUARE FEET
 - TYP. - TYPICAL
 - U.E. - UTILITY EASEMENT
 - P.B.F.C. - PALM BEACH FARMS COMPANY PLAT NO. 3 (P.B. 2, PGS. 45-54)
 - - DENOTES TRACT NUMBER PER PALM BEACH FARMS COMPANY PLAT NO. 3 (P.B. 2, PGS. 45-54)
 - - DENOTES STATE PLANE COORDINATES

NOTE:

COORDINATES SHOWN ARE GRID COORDINATES
 DATUM = NAD 83 (1990 ADJUSTMENT)
 ZONE = FLORIDA EAST ZONE
 LINEAR UNIT = U.S. SURVEY FEET
 COORDINATE SYSTEM = 1983 STATE PLANE TRANSVERSE MERCATOR PROJECTION
 ALL DISTANCES ARE GROUND
 SCALE FACTOR = 1.0000217
 PLAT BEARING = GRID BEARING
 NO ROTATION

KEY MAP



P.O.C.
 SOUTHWEST CORNER OF
 TRACT 101, BLOCK 43,
 PALM BEACH FARMS COMPANY
 PLAT NO. 3 - P.B. 2, PG. 45

50' R. D. & D.
 P.B. 2, PGS. 45 - 54
 (SEE SURVEYOR'S
 NOTE NO. 6,
 SHEET 1 OF 26)

50' R. D. & D.
 P.B. 2, PGS. 45 - 54
 L.W.D.D. R/W
 ORB. 1585, PG. 505

PBF 52
 FND. P.B.C.O.
 BRASS DISK IN CONC.

XENON
 FND. P.B.C.O.
 BRASS DISK IN CONC.

SUBDIVISION VALENCIA SHORES-Pl. I
 BOOK 93
 FLOOD ZONE B
 ZONING PL17
 QUAD # 49
 SS
 TAZ 744
 PUD NAME VALENCIA IV (VALENCIA SHORES)