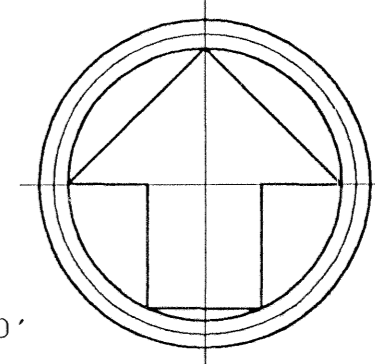
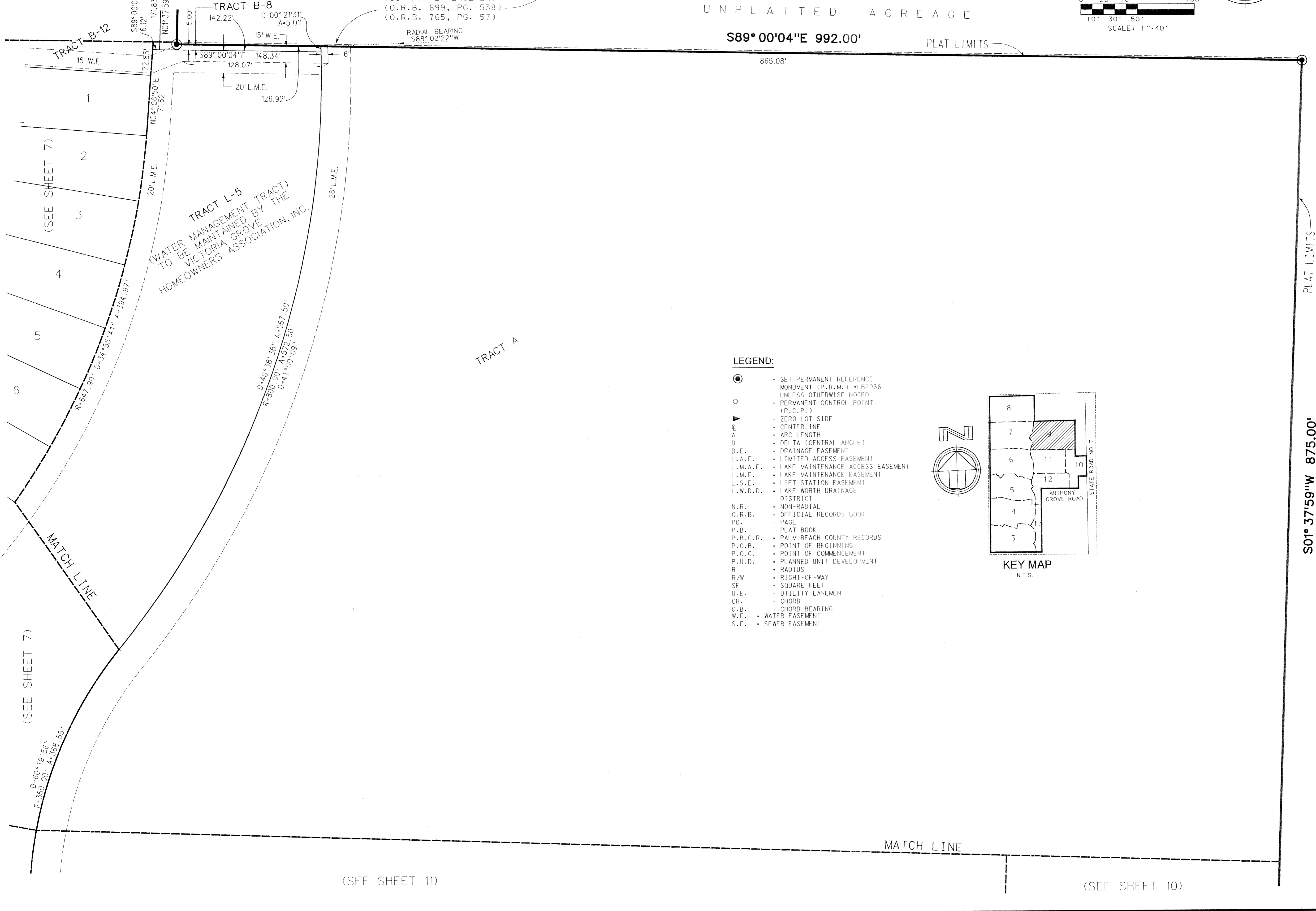
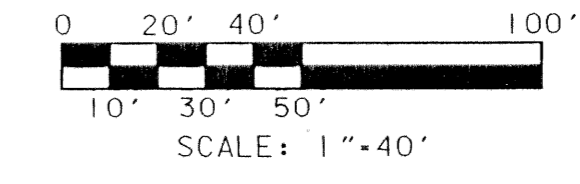


ANTHONY GROVES P.U.D.
ANTHONY GROVES PHASE 1
 A PORTION OF SECTION 1, TOWNSHIP 44 SOUTH, RANGE 41 EAST,
 VILLAGE OF ROYAL PALM BEACH, PALM BEACH COUNTY, FLORIDA



APRIL 2001 991010 JSH

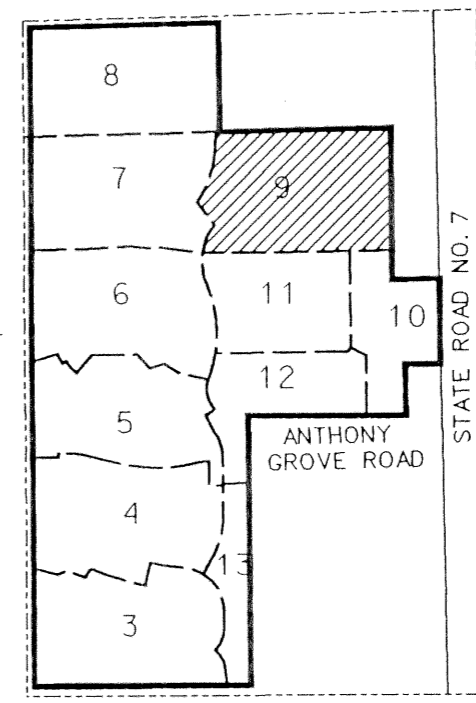
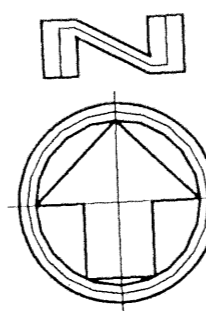
UNPLATTED ACREAGE



SHEET 9 OF 13

LEGEND:

- SET PERMANENT REFERENCE MONUMENT (P.R.M.) *LB2936 UNLESS OTHERWISE NOTED
- PERMANENT CONTROL POINT (P.C.P.)
- ▲ ZERO LOT SIDE
- ⊖ CENTERLINE
- A ARC LENGTH
- D DELTA (CENTRAL ANGLE)
- D.E. DRAINAGE EASEMENT
- L.A.E. LIMITED ACCESS EASEMENT
- L.M.A.E. LAKE MAINTENANCE ACCESS EASEMENT
- L.M.E. LAKE MAINTENANCE EASEMENT
- L.S.E. LIFT STATION EASEMENT
- L.W.D.D. LAKE WORTH DRAINAGE DISTRICT
- N.R. NON-RADIAL
- O.R.B. OFFICIAL RECORDS BOOK
- PG. PAGE
- P.B. PLAT BOOK
- P.B.C.R. PALM BEACH COUNTY RECORDS
- P.O.B. POINT OF BEGINNING
- P.O.C. POINT OF COMMENCEMENT
- P.U.D. PLANNED UNIT DEVELOPMENT
- R RADIUS
- R/W RIGHT-OF-WAY
- SF SQUARE FEET
- U.E. UTILITY EASEMENT
- CH. CHORD
- C.B. CHORD BEARING
- W.E. WATER EASEMENT
- S.E. SEWER EASEMENT



S01° 37'59\"/>

UNPLATTED ACREAGE

FILE: F:\991010\veadd\w\10ppp.dgn
 DATE: 17-Sep-01 13:37