

CARNAHAN · PROCTOR · CROSS, INC.

CONSULTING ENGINEERS · SURVEYORS · PLANNERS

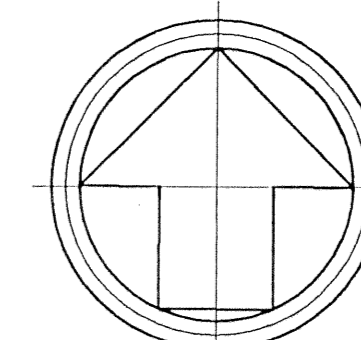
6101 WEST ATLANTIC BOULEVARD, MARGATE, FLORIDA 33063
PHONE: 954-972-3959 FAX: 954-972-4178

APRIL 2001 991010

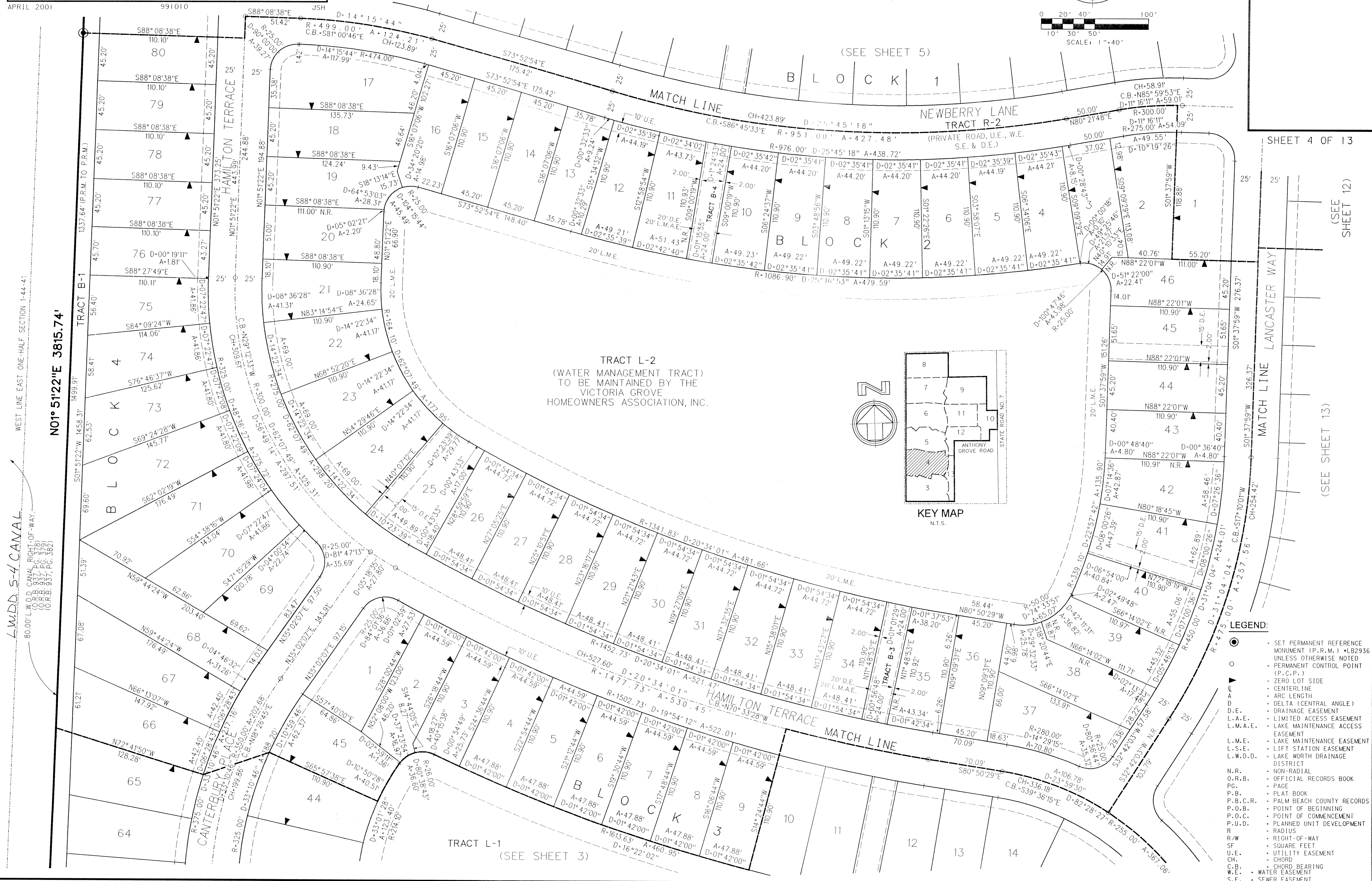
ANTHONY GROVES P.U.D.

ANTHONY GROVES PHASE 1

A PORTION OF SECTION 1, TOWNSHIP 44 SOUTH, RANGE 41 EAST,
VILLAGE OF ROYAL PALM BEACH, PALM BEACH COUNTY, FLORIDA



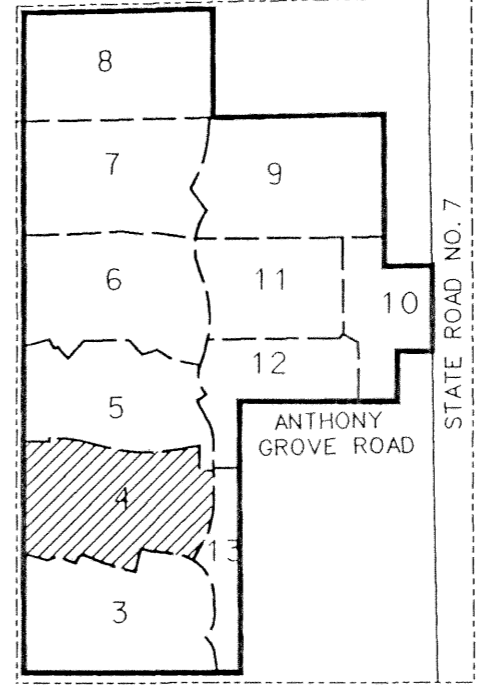
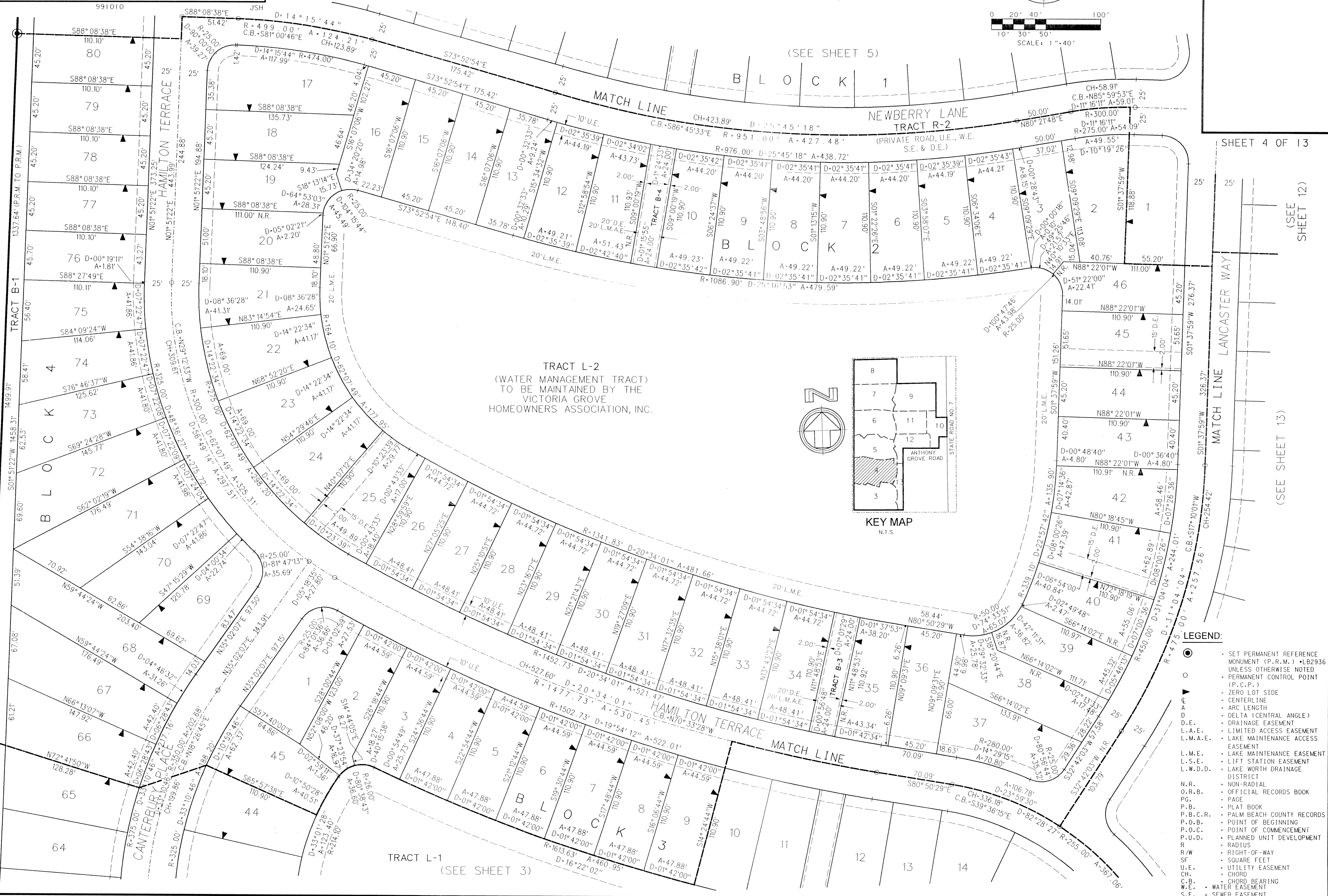
43



WEST LINE EAST ONE-HALF SECTION 1-44-41

L.W.D. S-4 CANAL
80.00' L.W.D. CANAL, RIGHT-OF-WAY.
(O.R.B. 337, 66, 378)
(O.R.B. 337, 66, 378)
(O.R.B. 337, 66, 378)

NO1° 51'22" E 3815.74'



- LEGEND:**
- SET PERMANENT REFERENCE MONUMENT (P.R.M.) - LB2936 UNLESS OTHERWISE NOTED
 - PERMANENT CONTROL POINT (P.C.P.)
 - ◀ ZERO LOT SIDE
 - ▲ ARC LENGTH
 - Δ DELTA (CENTRAL ANGLE)
 - D.E. DRAINAGE EASEMENT
 - L.A.E. LIMITED ACCESS EASEMENT
 - L.M.A.E. LAKE MAINTENANCE ACCESS EASEMENT
 - L.M.E. LAKE MAINTENANCE EASEMENT
 - L.S.E. LIFT STATION EASEMENT
 - L.W.D.D. LAKE WORTH DRAINAGE DISTRICT
 - N.R. NON-RADIAL
 - O.R.B. OFFICIAL RECORDS BOOK
 - P.S. PAGE
 - P.B. PLAT BOOK
 - P.B.C.R. PALM BEACH COUNTY RECORDS
 - P.O.B. POINT OF BEGINNING
 - P.O.C. POINT OF COMMENCEMENT
 - P.U.D. PLANNED UNIT DEVELOPMENT
 - R. RADIUS
 - R/W RIGHT-OF-WAY
 - SF SQUARE FEET
 - U.E. UTILITY EASEMENT
 - CH. CHORD
 - C.B. CHORD BEARING
 - W.E. WATER EASEMENT
 - S.E. SEWER EASEMENT