

BALLENISLES POD21

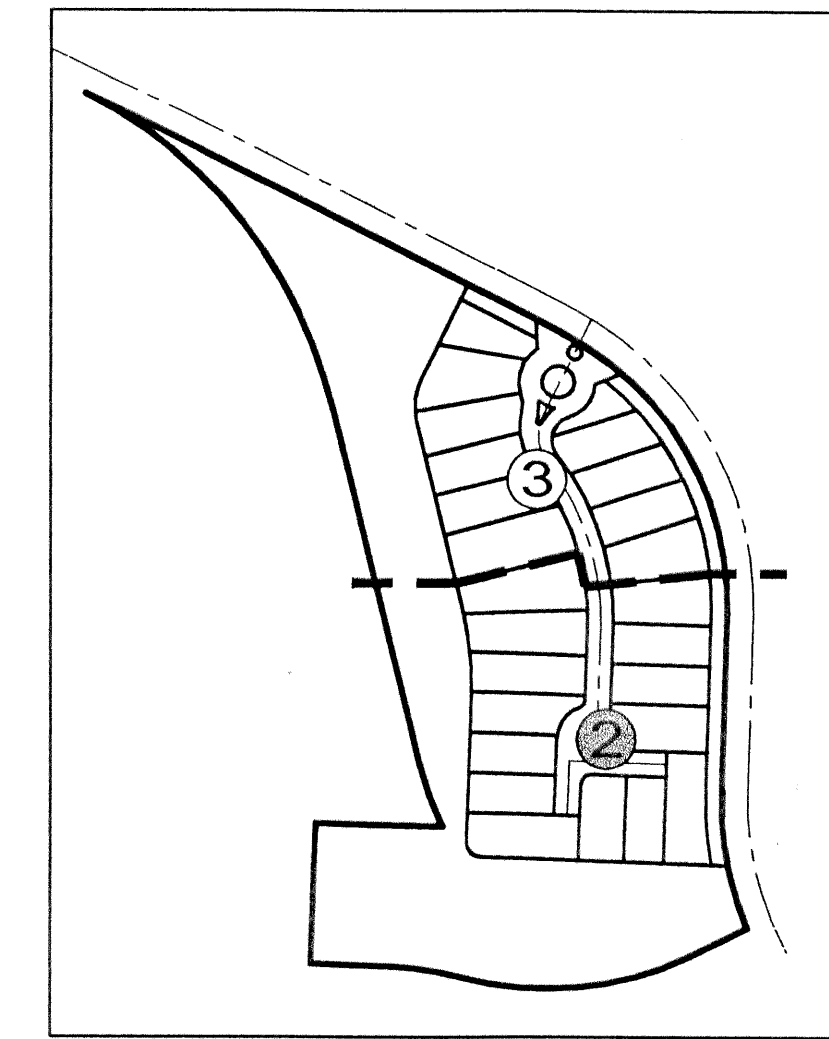
A PARCEL OF LAND LYING IN THE EAST HALF OF SECTION 14, TOWNSHIP 42 SOUTH, RANGE 42 EAST
CITY OF PALM BEACH GARDENS, PALM BEACH COUNTY, FLORIDA

SHEET 3 OF 3
SEPTEMBER 2001

SYMBOLS LEGEND

■	SET 4"x4" PERMANENT REFERENCE MONUMENT (P.R.M.) "L.B.4897"
□	FOUND 4"x4" PERMANENT REFERENCE MONUMENT (P.R.M.) "L.B.4897"
○	PERMANENT REFERENCE MONUMENT NOT SET
●	SET PERMANENT CONTROL POINT (P.C.P.) "L.B.4897"
○	FOUND PERMANENT CONTROL POINT (P.C.P.) #4676
NPBCID	NORTHERN PALM BEACH COUNTY IMPROVEMENT DISTRICT
R	RADIUS
D	CENTRAL ANGLE
L	ARC LENGTH
⊙	CENTERLINE
P.O.C.	POINT OF COMMENCING
P.O.B.	POINT OF BEGINNING
└	CHANGE IN DIRECTION
P.S.M.	PROFESSIONAL SURVEYOR AND MAPPER
P.C.	POINT OF CURVATURE

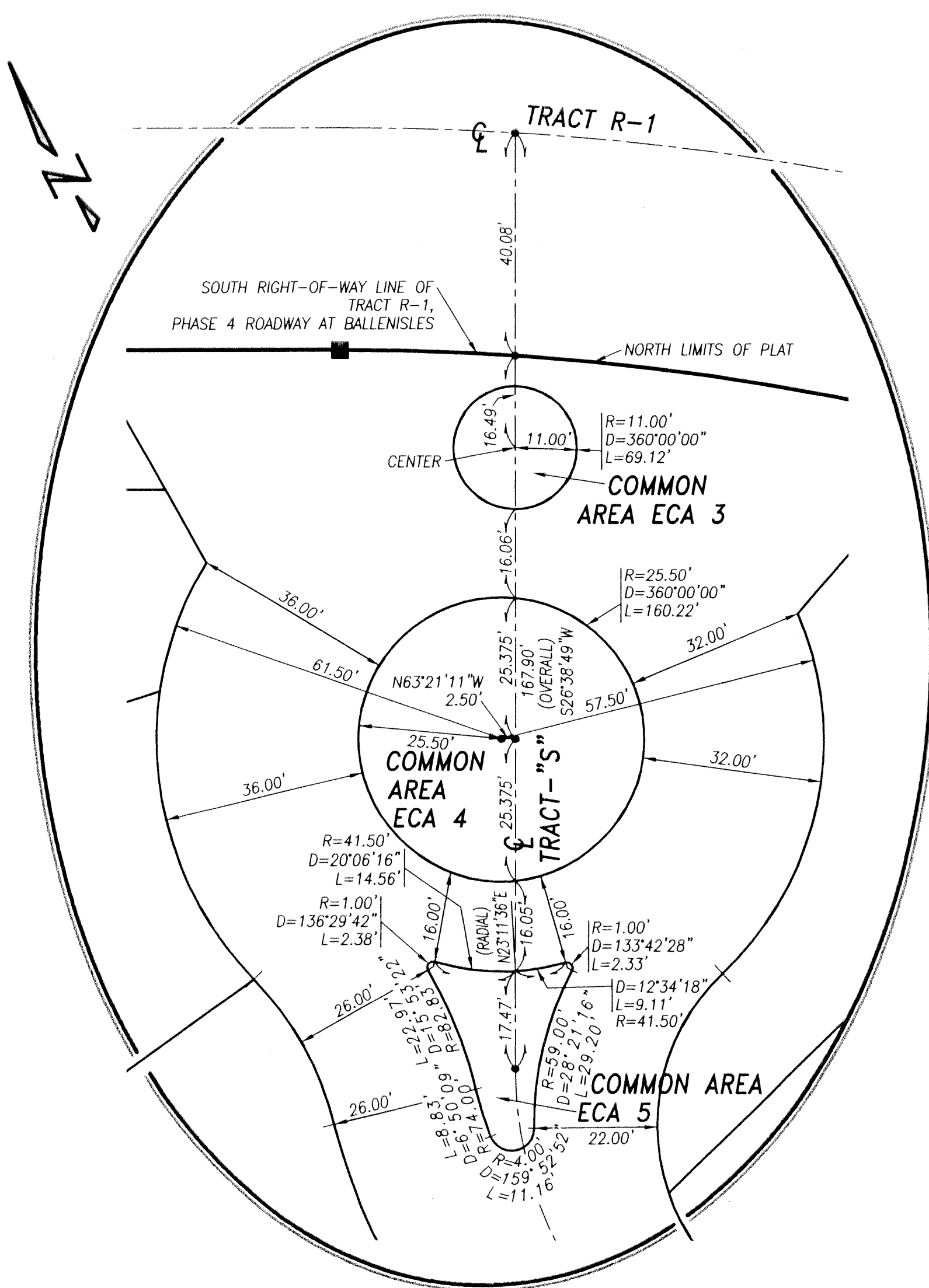
*NOTE: ALL LOT LINES ARE RADIAL UNLESS OTHERWISE SPECIFIED.



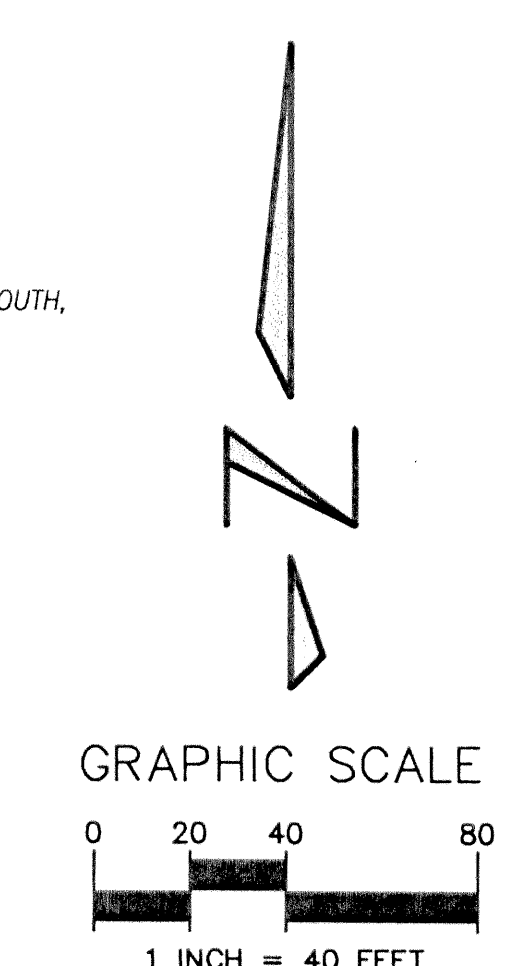
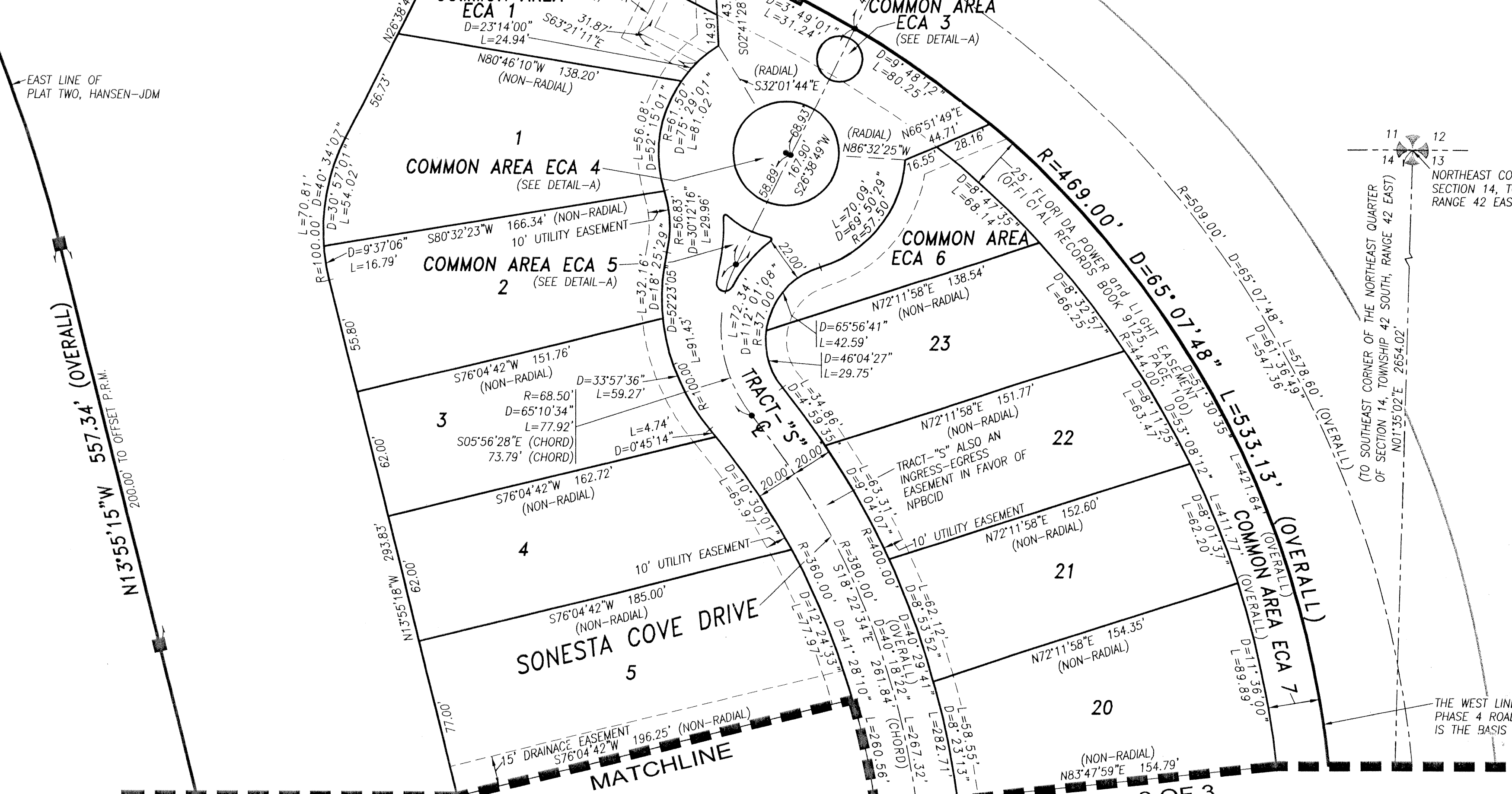
SHEET INDEX
NOT TO SCALE

PLAT TWO, HANSEN-JDM
(PLAT BOOK 69, PAGES 195-200)

TRACT W-12
(LAKE TRACT also a WATER MANAGEMENT EASEMENT IN FAVOR OF NORTHERN PALM BEACH COUNTY IMPROVEMENT DISTRICT)



DETAIL-A
SCALE: 1"=20'



Keshavarz & Associates, Inc.
CONSULTING ENGINEERS - SURVEYORS
1280 N. Congress Avenue, Suite 206
West Palm Beach, Florida 33409
Tel: (561) 689-8600 Fax: (561) 689-7476 LB 4897
THIS INSTRUMENT WAS PREPARED BY MANUEL A. GUTIERREZ, PSM
PROFESSIONAL SURVEYOR AND MAPPER NO. 4102
IN THE OFFICES OF KESHAVARZ & ASSOCIATES, INC.

SEE SHEET No.2 OF 3