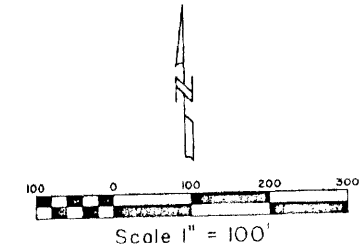
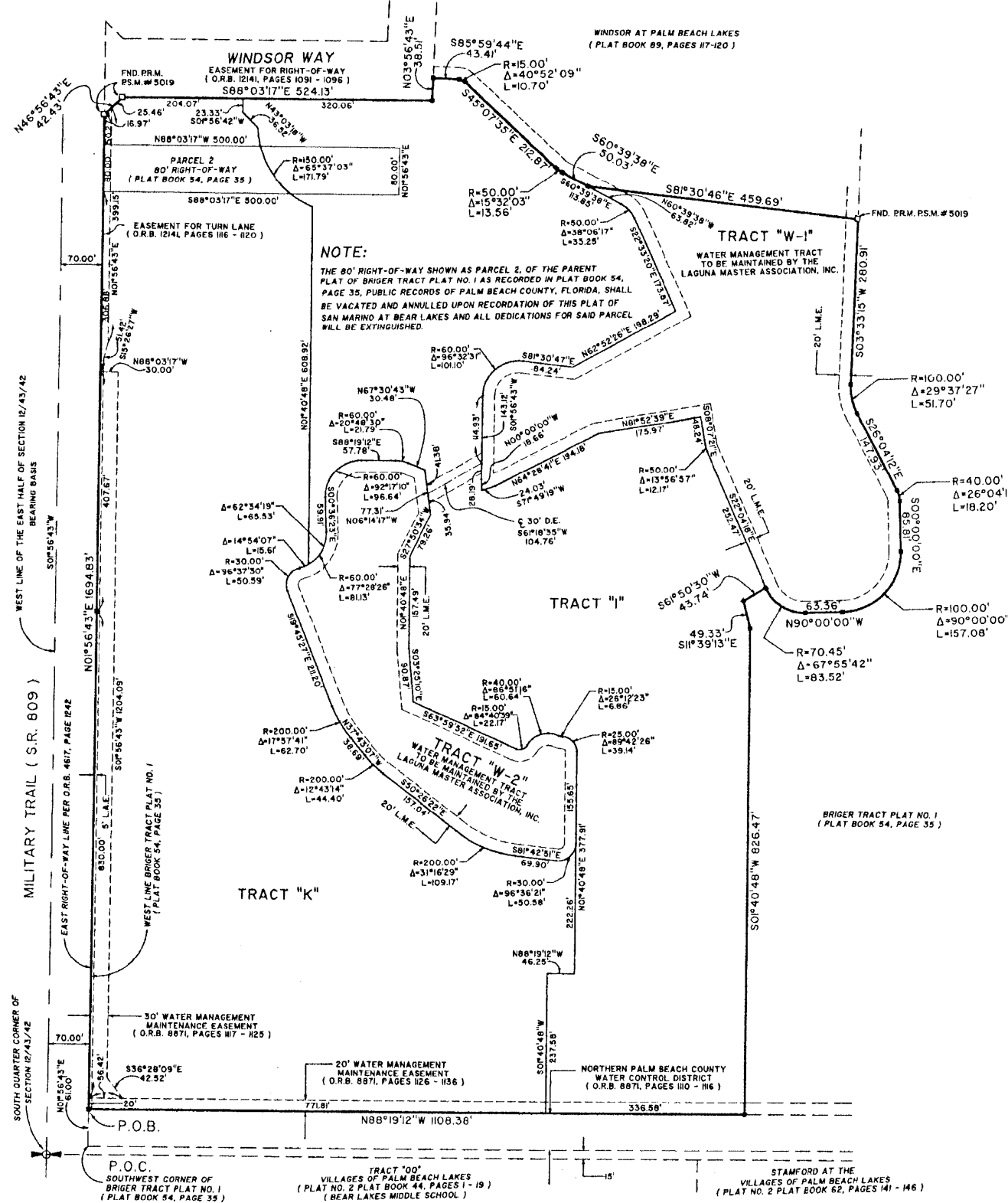


SAN MARINO AT BEAR LAKES

BEING A REPLAT OF A PORTION OF BRIGER TRACT PLAT NO. 1, AS RECORDED
 PLAT BOOK 54, PAGE 35, PUBLIC RECORDS OF PALM BEACH COUNTY, FLORIDA, LYING IN SECTION 12,
 TOWNSHIP 43 SOUTH, RANGE 42 EAST, CITY OF WEST PALM BEACH, PALM BEACH COUNTY, FLORIDA.
 SHEET 3 OF 3

46

STATE OF FLORIDA
 COUNTY OF PALM BEACH
 THIS PLAT WAS FILED FOR RECORD AT _____
 M. THE _____ DAY OF _____ 2001
 AND DULY RECORDED IN PLAT BOOK NO. _____
 ON PAGE _____
 DOROTHY H. WELKEN, CLERK OF THE CIRCUIT COURT
 BY _____ D.C.



Landmark Surveying & Mapping Inc.
 L.S. No. 4396
 1850 Forest Hill Boulevard
 Ph. (561) 433-5405 Suite 100 W.P.B. Florida

SAN MARINO AT BEAR LAKES