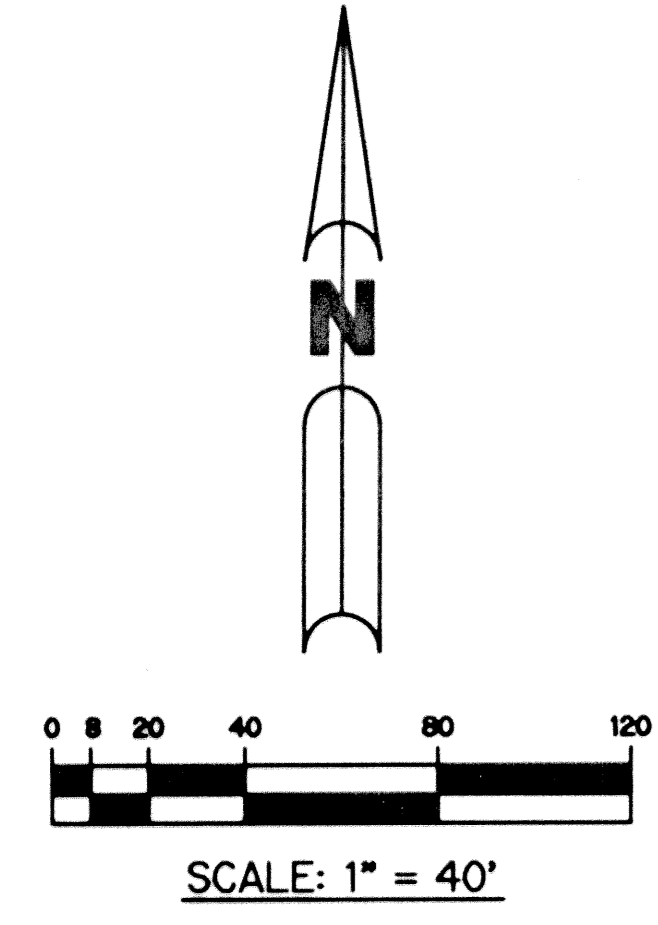


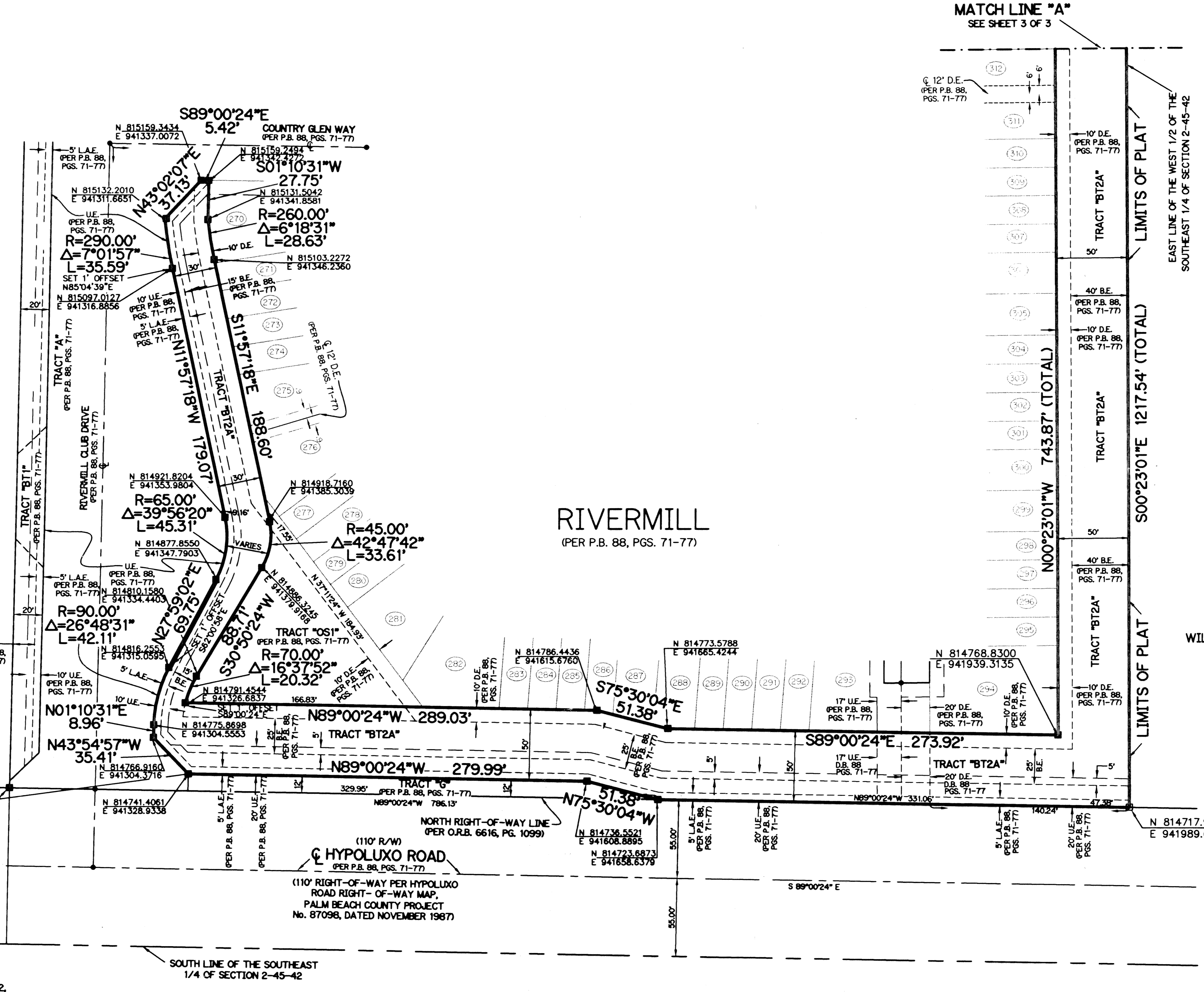
# RIVERMILL-PLAT NO. 2

BEING A REPLAT OF LOT 41 AND TRACT "BT2", RIVERMILL AS RECORDED IN PLAT BOOK 88, PAGES 71 THROUGH 77 OF THE PUBLIC RECORDS OF PALM BEACH COUNTY, FLORIDA AND LYING IN SECTION 2, TOWNSHIP 45 SOUTH, RANGE 42 EAST

SHEET 2 OF 3 MAY, 2001

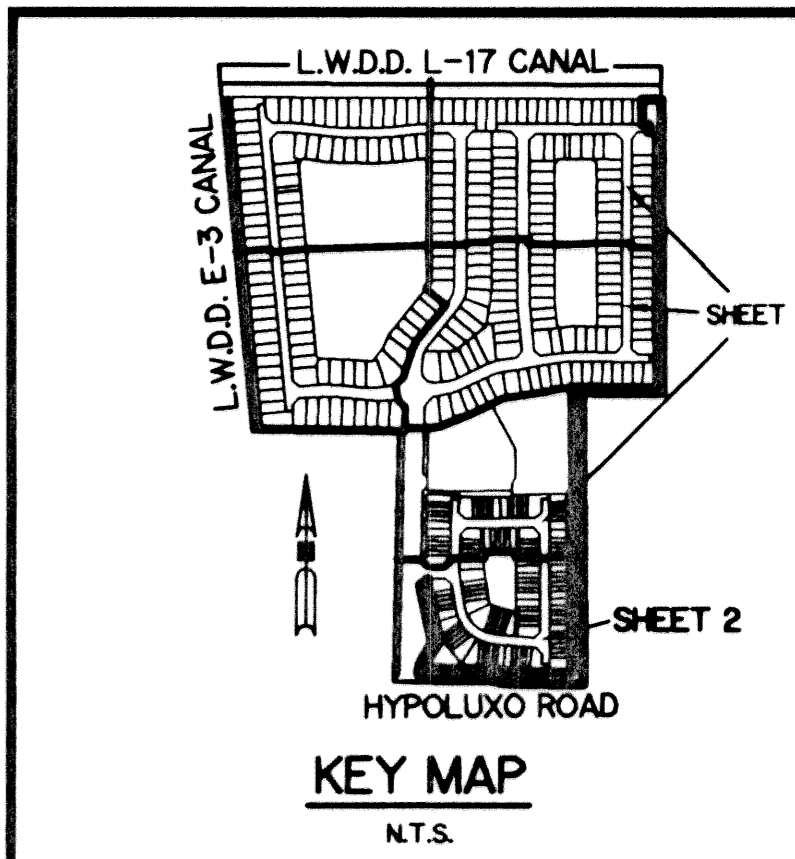


UNPLATTED  
(O.R.B. 2553, PG. 1880)



- NOTE:**  
 COORDINATES SHOWN ARE GRID COORDINATES  
 DATUM = NAD 83 (1980 ADJUSTMENT)  
 ZONE = FLORIDA EAST ZONE  
 LINEAR UNIT = U.S. SURVEY FEET  
 COORDINATE SYSTEM 1983 STATE PLANE  
 TRANSVERSE MERCATOR PROJECTION  
 ALL DISTANCES ARE GROUND  
 SCALE FACTOR = 1.000034481  
 NO ROTATION: PLAT BEARING = GRID BEARING
- LEGEND:**
- - FOUND PERMANENT REFERENCE MONUMENT, LB-6674
  - - SET PERMANENT REFERENCE MONUMENT, LB-6674
  - - PERMANENT CONTROL POINT, PSM #4190
  - Δ - DELTA ANGLE
  - B.E. - BUFFER EASEMENT
  - C. - CENTERLINE
  - C.B. - CHORD BEARING
  - C.L. - CHORD LENGTH
  - D.B. - DEED BOOK
  - D.E. - DRAINAGE EASEMENT
  - L - ARC LENGTH
  - A.E. - ACCESS EASEMENT
  - L.A.E. - LIMITED ACCESS EASEMENT
  - L.M.A.E. - LAKE MAINTENANCE ACCESS EASEMENT
  - L.M.E. - LAKE MAINTENANCE EASEMENT
  - L.W.D.D. - LAKE WORTH DRAINAGE DISTRICT
  - N.R. - NOT RADIAL
  - N.T.S. - NOT TO SCALE
  - O.E. - OVERHANG EASEMENT
  - O.R.B. - OFFICIAL RECORD BOOK
  - P.B. - PLAT BOOK
  - PGS. - PAGES
  - P.S.M. - PROFESSIONAL SURVEYOR AND MAPPER
  - R - RADIUS
  - R/W - RIGHT-OF-WAY
  - S.T. - SURVEY TIE
  - U.E. - UTILITY EASEMENT
  - N.T. - NON-TANGENT
  - R.F. - RADIAL TO FRONT LOT LINE
  - R.R. - RADIAL TO REAR LOT LINE
  - P.A.E. - PEDESTRIAN ACCESS EASEMENT
- N 814602.8657  
E 785753.1680 - DENOTES STATE PLANE COORDINATES

THIS INSTRUMENT PREPARED BY  
WILBUR F. DIVINE, P.S.M. 4190, STATE OF FLORIDA  
LAWSON, NOBLE AND WEBB, INC., LB-6674  
ENGINEERS PLANNERS SURVEYORS  
420 COLUMBIA DRIVE, SUITE 110  
WEST PALM BEACH, FLORIDA



1758  
ZANNO PUD/TOR  
ZIR CODE  
TAG 437  
PUD NAME  
Rivermill Plat 2  
33463

UNPLATTED