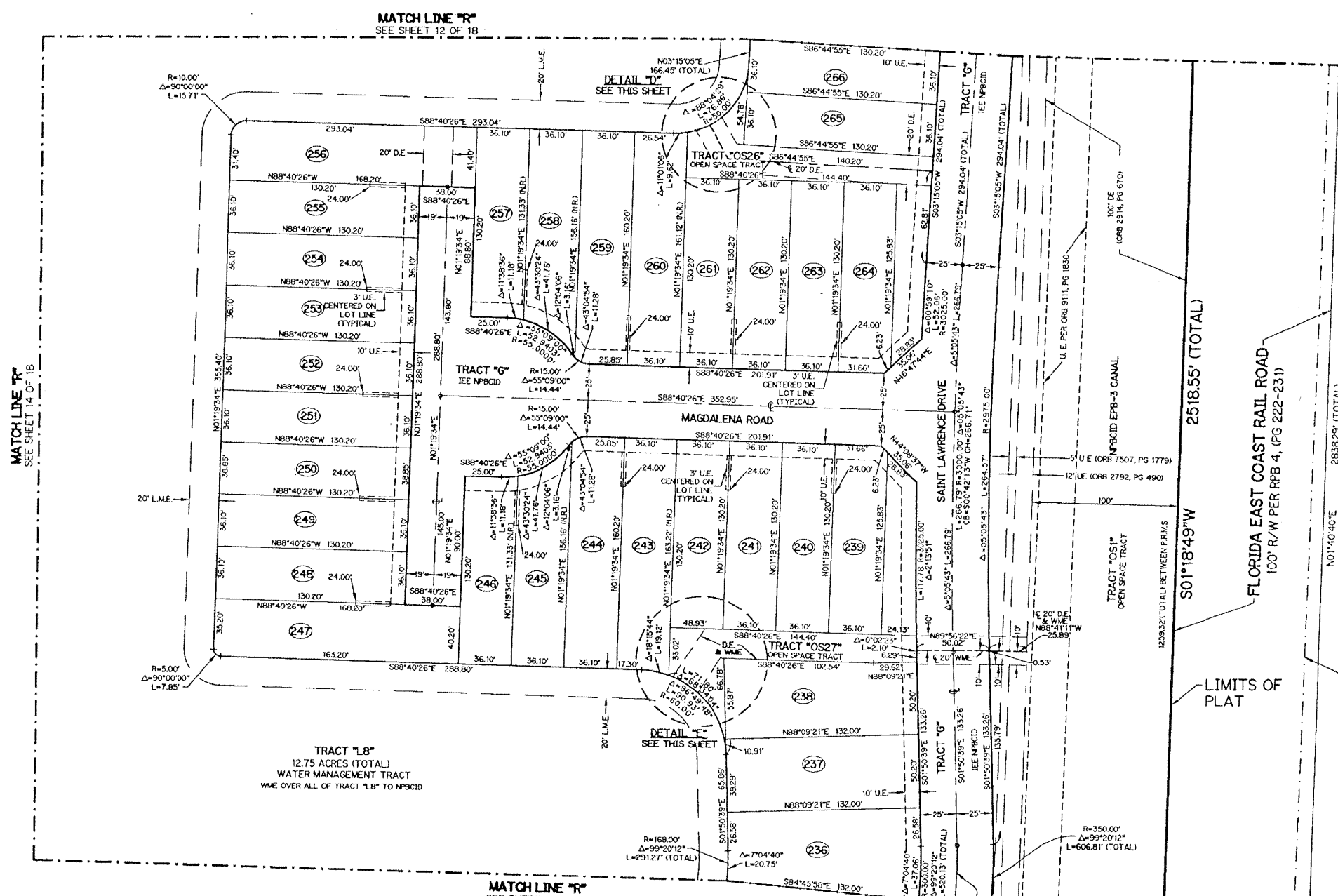
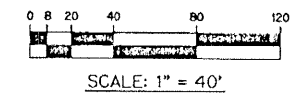


# ISLES AT PALM BEACH GARDENS

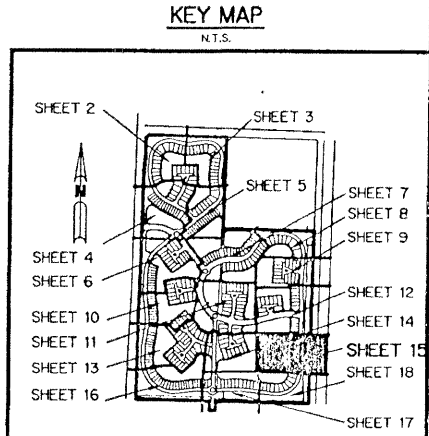
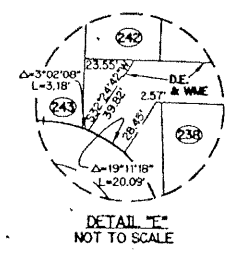
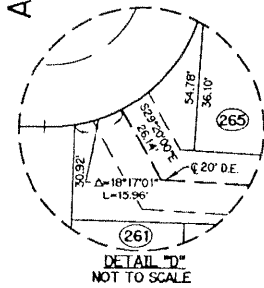
A PARCEL OF LAND SITUATE IN SECTION 36, TOWNSHIP 41 SOUTH, RANGE 42 EAST  
CITY OF PALM BEACH GARDENS, PALM BEACH COUNTY, FLORIDA.  
SHEET 15 OF 18 AUGUST 2001

THIS INSTRUMENT PREPARED BY  
WILBUR DIVINE, P.S.M. 4190, STATE OF FLORIDA  
LAWSON, NOBLE AND WEBB, INC.  
ENGINEERS PLANNERS SURVEYORS  
WEST PALM BEACH, FLORIDA  
LB 6674



- LEGEND:**
- - SET PERMANENT REFERENCE MONUMENT NO. L.B. 6674
  - - SET PERMANENT CONTROL POINT NO. L.B. 6674
  - - SET 5/8" IRON ROD WITH CAP NO. L.B. 6674
  - - FOUND PERMANENT REFERENCE MONUMENT
  - Δ - DELTA ANGLE
  - BT - BUFFER TRACT
  - CT - CENTERLINE
  - CB - CHORD BEARING
  - CH - CHORD
  - DB - DEED BOOK
  - DE - DRAINAGE EASEMENT
  - L - ARC LENGTH
  - L.A.E. - LIMITED ACCESS EASEMENT
  - L.M.E. - LAKE MAINTENANCE EASEMENT
  - NRJ - NON-RADIAL
  - N.T.S. - NOT TO SCALE
  - PI - PLAT DIMENSION
  - P.A.E. - PUBLIC ACCESS EASEMENT
  - P.D.E. - PUBLIC DRAINAGE EASEMENT
  - OS - OPEN SPACE TRACT
  - Q.R.B. - OFFICIAL RECORD BOOK
  - P.B. - PLAT BOOK
  - P.G.S. - PAGES
  - R - RADIUS
  - S.E. - SIDEWALK EASEMENT
  - U.E. - UTILITY EASEMENT
  - W.S.E. - WATER AND SEWER EASEMENT
  - (R.F.) - RADIAL TO FRONT
  - (R.R.) - RADIAL TO REAR
  - N.P.B.C.I.D. - NORTHERN PALM BEACH COUNTY IMPROVEMENT DISTRICT
  - W.M.E. - WATER MANAGEMENT EASEMENT
  - W.M.M.E. - WATER MANAGEMENT MAINTENANCE EASEMENT
  - W.M.A.E. - WATER MANAGEMENT ACCESS EASEMENT
  - W.E. - WAREHOUSE EASEMENT
  - L.M.A.E. - LAKE MAINTENANCE ACCESS EASEMENT
  - P.I. - POINT OF INTERSECTION

ALTERNATE A-1-A



**NOTE:**  
COORDINATES SHOWN ARE GRID COORDINATES  
DATUM = NAD 83 (1990 ADJUSTMENT)  
ZONE = FLORIDA EAST ZONE  
LINEAR UNIT = U.S. SURVEY FEET  
COORDINATE SYSTEM 1983 STATE PLANE  
TRANSVERSE MERCATOR PROJECTION  
ALL DISTANCES ARE GROUND  
SCALE FACTOR = 1.0000397  
S88°41'11"E (PLAT BEARING)  
S88°41'11"E (GRID BEARING)  
ZERO ROTATION PLAT TO GRID

G:\DATA\300-999\A372\CAD\A372P15.dwg 08/29/2001 04:15:06 PM EDT